



# LIVE HOME AWAY FROM HOME



GRAND VALLEY  
STATE UNIVERSITY

HOUSING AND  
RESIDENCE LIFE



# BEFORE WE BEGIN

IS THIS YOUR FIRST STUDENT TO GO AWAY  
OR HAVE YOU BEEN THROUGH THIS PROCESS  
BEFORE?

WHAT QUESTIONS DO YOU HAVE ABOUT  
ON-CAMPUS HOUSING?

WHAT DO YOU HOPE TO GAIN FROM THIS  
SESSION?



# TODAY'S SESSION

- About Housing & Residence Life
- Styles & Options
- Preparing for Arrival
- Roommate Relationships
- Health & Wellness
- Shifting Your Role



# OUR MISSION AND VALUES

Providing resources and opportunities for student learning and success by collaborating to build inclusive residential communities and experiences.



**Student  
Development &  
Support**



**Liberal  
Education**



**Diversity &  
Inclusion**



**Sustainability**



# HOUSING STAFF

RESIDENCE LIFE  
LEADERSHIP TEAM

12 LIVING CENTER  
DIRECTORS

12 GRADUATE  
ASSISTANTS

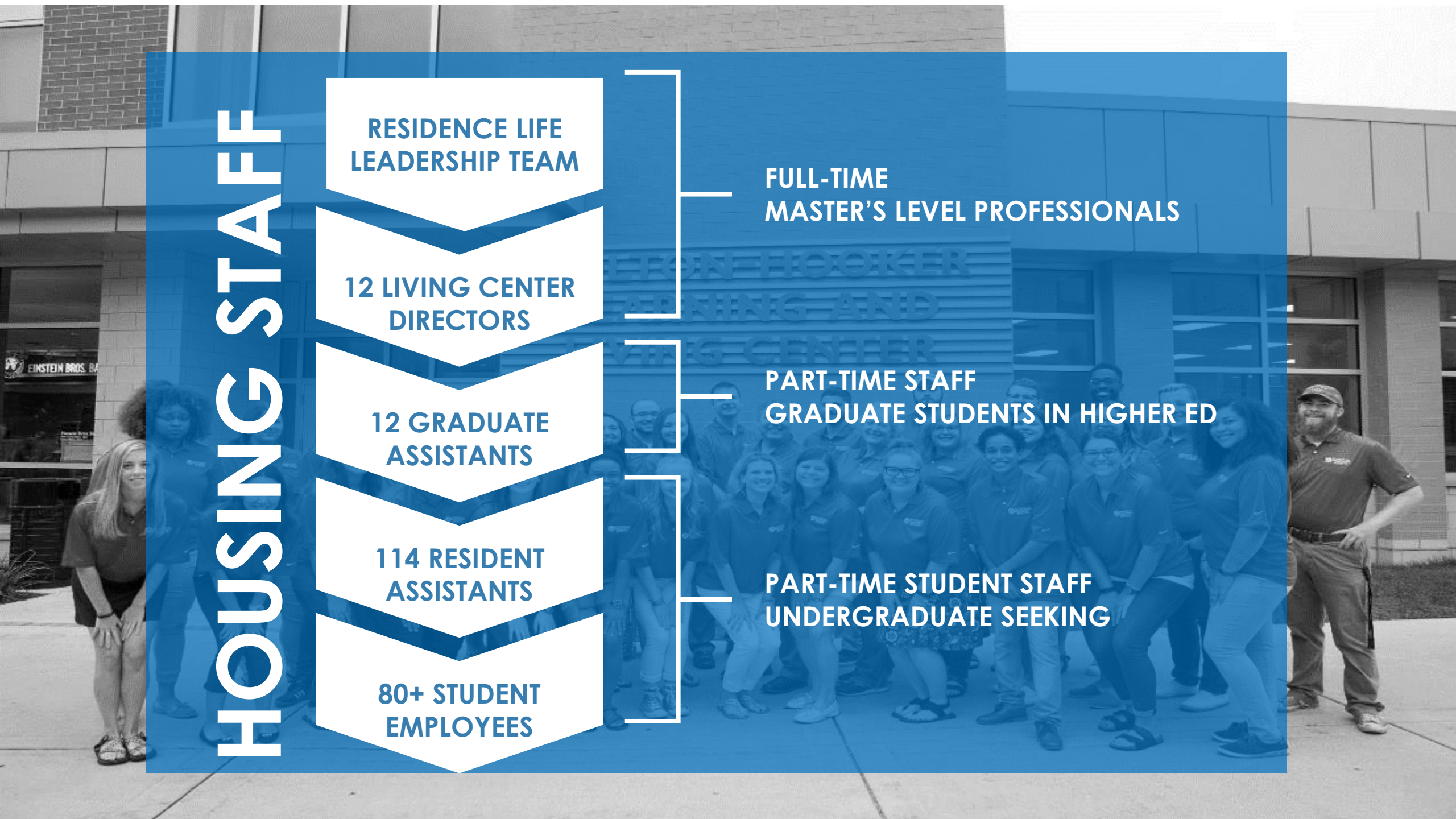
114 RESIDENT  
ASSISTANTS

80+ STUDENT  
EMPLOYEES

FULL-TIME  
MASTER'S LEVEL PROFESSIONALS

PART-TIME STAFF  
GRADUATE STUDENTS IN HIGHER ED

PART-TIME STUDENT STAFF  
UNDERGRADUATE SEEKING



# ON CAMPUS

## HOUSING OPTIONS

## NORTH CAMPUS

### FIRST-YEAR STUDENTS

---

#### Traditional Style

Kistler, Copeland, Robinson

#### Cluster Style

Holton-Hooker

#### Suite Style

Pew, Pickard, DeVos, Maple, Oak, Pine,  
Stafford, Swanson, Seidman, Kirkpatrick

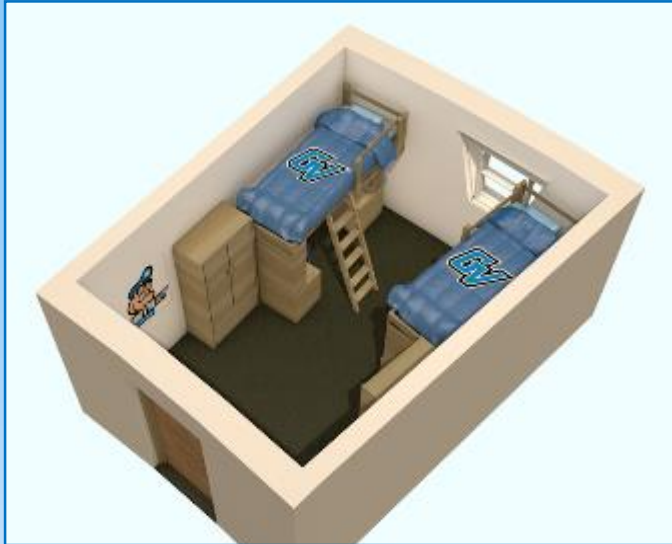
#### 1 Bedroom Apartment Style

North C, Hills, Frey

#### 2 Bedroom Apartment Style

Weed, Hoobler, Ott, Johnson





**TRADITIONAL STYLE**



**SUITE STYLE**



**CLUSTER STYLE**



**1 BEDROOM APARTMENT**



**2 BEDROOM APARTMENT**

**\* ALL BEDS ON CAMPUS  
ARE TWIN EXTRA LONG.**

**\* FURNITURE IS LOFTED  
UPON ARRIVAL –  
NO TOOLS NECESSARY!**

**\* NORTH CAMPUS IS  
NOT AIR CONDITIONED.  
BE SURE TO BRING A FAN!**



# ON CAMPUS

HOUSING OPTIONS

## **SOUTH CAMPUS UPPERCLASSMAN APARTMENTS**

---

### **Niemeyer/Calder**

Niemeyer Honors College & Calder Arts

### **South Apartments**

WISE, Movement Science

### **Murray/VanSteeland/GVA Apartments**

International House, Gender Justice House

### **Laker Village**

Townhouse-Style Apartments

### **Winter/Secchia**

Pew Campus, Downtown





**2-BEDROOM APARTMENT**



**TOWNHOUSE – DOWNSTAIRS**



**DOWNTOWN 2-BEDROOM**



**4-BEDROOM APARTMENT**



**TOWNHOUSE – UPSTAIRS**



**DOWNTOWN 3-BEDROOM**



**LIVE  
LIKE A  
LAKER...  
AGAIN!**

**SIGN UP TODAY  
FOR PRIORITY  
ON-CAMPUS  
APARTMENT  
SELECTION FOR  
SOPHOMORE YEAR**

**HOUSING STAFF IS  
AVAILABLE TO  
ASSIST YOU IN THE  
KIRKHOF LOBBY THIS  
AFTERNOON**



# PREPARING FOR ARRIVAL

What amenities are included when living on campus?  
What should we bring?

## Answer:

Visit [gvsu.edu/housing/amenities](https://gvsu.edu/housing/amenities) and [gvsu.edu/housing/packinglist](https://gvsu.edu/housing/packinglist) for more info!



DIGITAL HIGH DEFINITION CABLE TV SERVICE  
IS PROVIDED IN EVERY ROOM & BUILDINGS.  
RESIDENTS HAVE ACCESS TO 90+ STATIONS.





# PREPARING FOR ARRIVAL

YOU'LL  
DEFINITELY  
NEED  
THIS!

## PACKING LIST FOR ON-CAMPUS HOUSING

It is recommended that students bring these items when moving in. All items should be coordinated with roommates prior to moving in.

### BEDDING

- ☐ Blanket
- ☐ Comforter
- ☐ Mattress Pad (Twin XL 36" x 80")
- ☐ Pillow/Pillow Cases
- ☐ Sheets (Twin XL 36" x 80")

### BATH, LAUNDRY, + CLEANING

- ☐ Bath Rugs/Mats (all except Cluster & Traditional)
- ☐ Cleaning Supplies
- ☐ Fabric Softener/Dryer Sheets/HE Detergent
- ☐ Laundry Bag/Basket
- ☐ Shower Caddy
- ☐ Shower Curtain\*\* (all except Cluster & Traditional)
- ☐ Shower Shoes/Flip-Flops (Cluster & Traditional only)
- ☐ Towels and Washcloths

\*\*72" vinyl with side suction and magnets/weights

### ELECTRONICS + APPLIANCES

- ☐ Alarm Clock
- ☐ Cell Phone (with charger)
- ☐ Compact Floor Cleaning Device
- ☐ Computer/Laptop (with charger and locking cable)
- ☐ Coffee Pot
- ☐ Desk/Floor Lamp (with bulbs)
- ☐ Flashlight/Batteries
- ☐ Hair Dryer, Curling Iron, Straightener
- ☐ Iron (auto shut-off)/Ironing Board
- ☐ Fan (floor, window, and/or clip)
- ☐ Microwave (1,000 watts or less)
- ☐ Mini-Fridge (4.6 cubic feet or less - Cluster, Traditional, Suite only)
- ☐ Power Strip with Surge Protector (UL certified)
- ☐ TV and Coaxial Cable (TV must have a QAM tuner)
- ☐ Wireless Speaker

### PERSONAL CREDENTIALS

- ☐ ATM Card/Credit Cards
- ☐ Driver's License
- ☐ Insurance Cards
- ☐ Passport/Visa
- ☐ Social Security Card

### PERSONAL CARE ITEMS

- ☐ All-Season Clothing/Footwear/Sunglasses
- ☐ First Aid Kit
- ☐ Haircare, Cosmetic, Personal Hygiene Items
- ☐ Prescription/OTC Medications
- ☐ Shampoo/Conditioner/Soap/Deodorant
- ☐ Thermometer
- ☐ Toothbrush/Toothpaste
- ☐ Umbrella/Rain Gear

### HOUSEHOLD ITEMS

- ☐ Can Opener
- ☐ Dishware/Silverware
- ☐ Food Storage Containers
- ☐ Small Tool Kit
- ☐ Water Bottle/Filter Pitcher

### ROOM DECOR + ORGANIZATION

- ☐ Decorative Rug
- ☐ Decorative String Lights (25 feet or less; UL certified)
- ☐ Hangers
- ☐ Message Board and Markers
- ☐ Mirror
- ☐ Office Supplies (scissors, tape, stapler, paperclips)
- ☐ Painter's Tape
- ☐ Removable Wall Decor
- ☐ School Supplies (backpack, pens, pencils, highlighters, notebooks, folders)
- ☐ Storage Organizers

More info at [gvsu.edu/housing/packinglist](https://gvsu.edu/housing/packinglist)  
Move-in schedules at [gvsu.edu/housing/movein](https://gvsu.edu/housing/movein)



# PREPARING FOR ARRIVAL

Where can I find  
Housing's policies and  
protocols?

**Answer:**

Visit [gvsu.edu/housing/policies](https://gvsu.edu/housing/policies) for  
more info!



MICROWAVES ARE NOT  
PROVIDED, BUT ARE  
PERMITTED 1 PER UNIT  
IN ALL HOUSING AREAS.





# PREPARING FOR ARRIVAL

We haven't heard back from my student's new roommate. What should we do?

## Answer:

Visit the Myhousing Overview for updated information!



REFRIGERATORS ARE PROVIDED IN ALL HOUSING STYLES EXCEPT TRADITIONAL, SUITE, AND CLUSTER STYLE.



# **PREPARING FOR ARRIVAL**

**How should we prepare for move-in day?  
What should we expect?**

## **Answer:**

Visit [gvsu.edu/housing/movein](https://gvsu.edu/housing/movein) for more info!



**WASHERS AND DRYERS ARE CARD OPERATED.  
RESIDENTS ARE PROVIDED A CARD AT  
MOVE-IN PRELOADED WITH 90 CYCLES.**





# ROOMMATE RELATIONSHIPS

What makes for a successful roommate relationship?



**Coordination**



**Open  
Communication**



**Shifting  
Perspective**



**Conflict  
Prevention &  
Mediation**

# HEALTH & WELLNESS



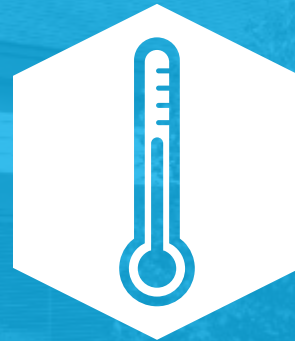


# HEALTH CONSIDERATIONS

How do we best prepare for health related concerns?



Medical  
Supplies



Managing  
Chronic  
Conditions



Medical  
Emergencies

# What does the Campus Health Center provide?

## Answer:

Visit [gvsu.edu/campushealth](https://gvsu.edu/campushealth)

*Operated by Metro Health*

*On South Campus, near water tower*

*Open Monday-Friday during business hours*

*Same-day appointments for illness/injury*



**THE CAMPUS HEALTH CENTER WILL DIRECTLY BILL YOUR INSURANCE. WE SUGGEST CHECKING YOUR POLICY'S OUT OF NETWORK COST.**





A photograph of a Black man with short dreadlocks tied back, wearing a dark blue t-shirt and white shorts, working out in a gym. He is holding a silver barbell and has red earbuds in. The background shows other gym equipment and people in a well-lit facility.

# REC

**Campus Recreation** promotes health and wellbeing, offering programs, services and events for

- Club Sports
- Fitness & Wellness
- Intramural Sports
- Outdoor Adventures

**Where can you learn more?**

Family Guide | page 39

Visit their website at [gvsu.edu/rec](https://gvsu.edu/rec) for more info.

**CAMPUS REC OFFERS MASSAGES,  
FREE ROCK CLIMBLING AND 50+  
GROUP EXERCISES PER WEEK.**



What are some things we can expect in this coming year?

**Answer:**

Family Guide | page 1.

Visit the Laker Family Network at [gvsu.edu/family](http://gvsu.edu/family).

[transitionyear.org](http://transitionyear.org)

[collegeparentcentral.com](http://collegeparentcentral.com)



[@CPofAmerica](https://twitter.com/CPofAmerica)

[@4collegeparents](https://twitter.com/4collegeparents)



A blue-tinted photograph of a large, curved archway at Grand Valley State University. The archway has the words "GRAND VALLEY STATE UNIVERSITY" inscribed on its upper curve. The background is filled with trees and foliage. A white rectangular border frames the central text.

[gvsu.edu/Housing/](https://gvsu.edu/Housing/)



GRAND VALLEY  
STATE UNIVERSITY

HOUSING AND  
RESIDENCE LIFE

# EAT ON CAMPUS

## Meal Plans

### Meals

All-you-care-to-eat at Fresh Food

Combo Meals (see combo cheat sheet)

### Dining Dollars

**Important:**  
Spend all Dining Dollars before the  
Winter semester ends, late April 2020







# EAT ON CAMPUS

## Living on North Campus

14+

**COST: \$1,625\* / semester**

**14 Meals / week**

**\$225 Dining Dollars**

**\*Included in semester  
rate for North Campus**

UNLIMITED  
FRESH

**COST: \$1,775 / semester**

**Unlimited Trips to Fresh**

**10 Meals / week  
at other locations**

**\$125 Dining Dollars**

**Meals =  
Fresh Food Co. all-you-care-to-eat  
Combo Meals at multiple locations**





# EAT ON CAMPUS

**Living on South Campus**

Meal Plans not included in housing contract

Can choose any of the 8 Meal Plans

See [www.gvsufood.com](http://www.gvsufood.com) for details

**Tip:**

**Select both fall and winter semesters.  
Change or cancel later if needed.**







# **EAT** ON CAMPUS

**Plans active Monday, August 19**

**Access Meal Plans with the barcode on the back of Student ID**

**Tip:**  
Track meal plan account balances at  
[www.gvsufood](http://www.gvsufood) or on the GV Mobile App.





# EAT ON CAMPUS

## Resources

Allergens

Vegan/Vegetarian

Dietary Needs

Nutrition

Registered Dietitian

Tip:  
Consultation with Campus Dining's  
Registered Dietitian is free







# EAT ON CAMPUS

## Questions

Campus Dining Resource Table

[gvsufood.com](http://gvsufood.com)

Email

Call

Tip:  
See Fresh Food Co. on  
today's housing tour





GRAND VALLEY  
STATE UNIVERSITY  
HOUSING AND  
RESIDENCE LIFE

GRAND VALLEY STATE UNIVERSITY  
**RECREATION**

**Thank You!**  
**Please submit your feedback survey**

**Housing tours will be leaving  
shortly from Kirkhof lobby**



CAMPUS  
DINING