

Windemere Park Charter Academy

School Information

Grade Configuration: K-8 (K-8 Contract)
Current Contract Term Length: 7 years
Education Service Provider: National Heritage Academies

Location: 3100 W. Saginaw Street, Lansing, MI 48917

Board President: Emily Carney

Board Members:

Mark Bates Andrew Kilpatrick

Merritta Hunt-Proctor Randy Umfleet

Summary & Key School Highlights

Summary: Founded in 1999, Windemere Park Charter Academy educates approximately 677 students, 92% of whom are from the Lansing / Waverly area. Windemere provides a high quality general program of fundamental education in core academic areas.

Highlights:

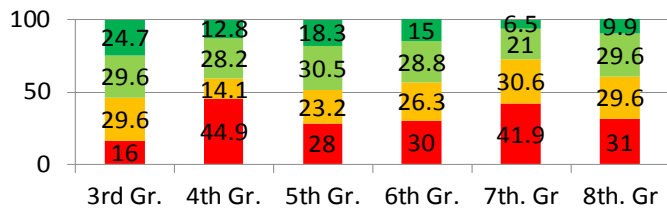
- Top 3 NHA schools based on student growth & top 10 for proficiency
- Excellent elective programs for middle school students
- Secretaries ranked #1 of all NHA schools
- Eagle Award winner, based on academic growth

CSO Capacity Analysis

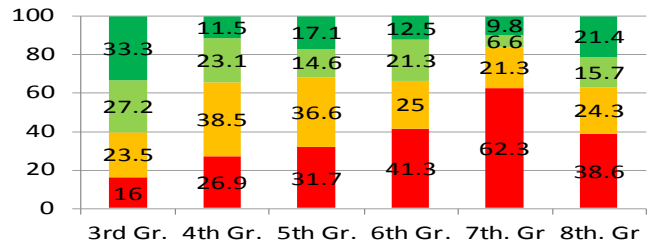
Windemere Park Charter Academy has consistently demonstrated strength in its educational program, organizational soundness, and fiscal stability. Administration continues to demonstrate all elements that sustain a positive and productive learning environment. School receives strong support and resources from its management company and board. Staff has been trained in restorative practices which has led to low student discipline. Academic performance is strong, both in terms of proficiency and student growth. The CSO believes that this is the result of a strong school-wide culture that emphasizes a growth mindset, and a well-designed and consistently implemented systems and procedures, and longstanding school leadership. This evidence provides the CSO with confidence that the school's internal capacity to deliver strong academic results will remain solid.

Academic Performance

2018 Spring MSTEP ELA Proficiency



2018 Spring MSTEP Math Proficiency



■ Not Proficient ■ Partially Proficient ■ Proficient ■ Advanced

SAT Evidence-based Reading and Writing

NA

SAT Mathematics

NA

SAT Total Score

NA

Academic Achievement and Trend K-8 (M-STEP Proficiency)

MSTEP Proficiency difference between Windemere and statistically similar schools.

2016	2017	2018
+13%	▲ +17%	▼ +16%

Academic Achievement and Trend 9-12 (SAT Total Score)

SAT Total Score difference between Windemere and statistically similar schools.

2016	2017	2018
Not Applicable	Not Applicable	Not Applicable

Academic Growth (MSTEP SGP)

Mean Student Growth Percentile Rank difference between Windemere and statistically similar schools.

2017

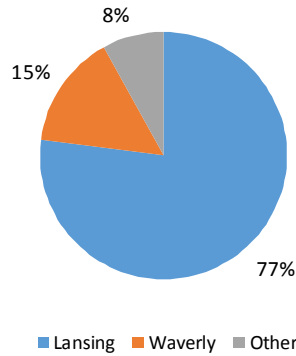
ELA	Math
+12.4	+4.2

Windemere Park Charter Academy

Roster of Statistically Similar Schools

School Name	Distance
J.W. Sexton High School	1.0mi
Breckenridge Elementary School	>2mi
Breckenridge High School	>2mi
Countryside Academy - Elementary	>2mi
Countryside Academy - Middle/High School	>2mi
Flagship Charter Academy	>2mi

Students' Resident Districts



Attendance Rate

All Students 93.50%

2017-18 Compliance Reporting

Exceeds Standards
 (At least 95% of board and school documents submitted on time)

2017-18 Financial Condition (based on FY 17 audit)

Exceeds Standards
 (Audited financial statements submitted on time, unqualified opinion, and no significant deficiencies or material weaknesses)

Enrollment by grade trend

