

2018-19 School Performance Report

Evergreen Academy



Grade Configuration

K-8 (K-8 Contract)

Current Contract Term Length

3 Years

Education Service Provider

Foundation for Behavioral Resources

Location

2121 Hudson Avenue, Kalamazoo, MI 49008

Board President

Eugene McKay

Board Members

Cheryl Campbell, Jeffery Boyd, Gerald Hollaway, Della Weaver

Summary

Founded in 2012, Evergreen Academy educates approximately 90 students, more than 90% of whom are from the Kalamazoo / Comstock area. Evergreen provides a program of fundamental education in core academic areas.

Highlights

Small family like environment

Small classes; low student to teacher ratio

Individualized instruction for all students

CSO Capacity Analysis

Evergreen Academy has demonstrated some progress in its educational program, as well as fiscal stability. The school demonstrates some growth while educating a relatively high at-risk population. However, the CSO has noted significant turnover in leadership and personnel in both last and this year, which should be addressed prior to stabilize its educational program to be able to consistently deliver results for students. The CSO believes that, though this school has historically demonstrated a strong school-wide culture that emphasizes a growth mindset and has had well-designed and consistently implemented systems and procedures, these are somewhat eroded by staff turnover. Because Evergreen receives strong support and resources from its management company and board, the CSO believes that it has the capacity to stabilize its operations to deliver better academic results.

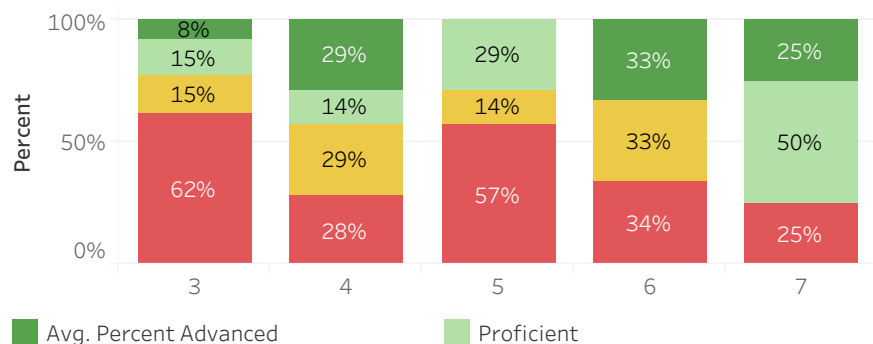


2018-19 School Performance Report

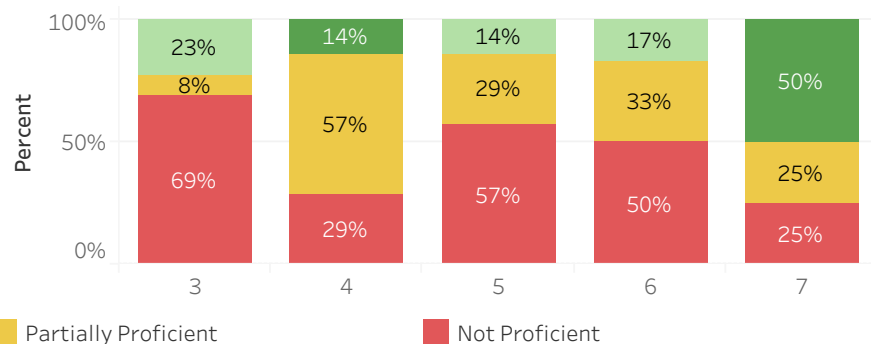
Evergreen Academy



2019 Spring MSTEP ELA Proficiency



2019 Spring MSTEP Math Proficiency



Educational Goals

Difference between Evergreen Academy and statistically similar schools on MSTEP Proficiency, Growth, and SAT

2019 School Index 55.86	2019 ELA Student Growth Percentile 11.0	2019 Math Student Growth Percentile 12.1
MSTEP Academic Trend 2017 -2	MSTEP Academic Trend 2018 ▼ -14	MSTEP Academic Trend 2019 ▲ -6
2019 SAT Reading and Writing NA	2019 SAT Mathematics NA	2019 SAT Total Score NA
SAT Academic Trend 2017 NA	SAT Academic Trend 2018 NA	SAT Academic Trend 2019 NA



2018-19 School Performance Report

Evergreen Academy



Roster of Statistically Similar Schools*

Parkwood-Upjohn Elementary School, 0.5 mi
Woods Lake Elementary: A Magnet Center For The Arts, 1.1 mi
Winchell Elementary School, 1.1 mi
EL Sol Elementary
Washington Writers' Academy, 1.3 mi
Milwood Elementary School, 1.7 mi
Woodward School for Technology and Research, 1.9 mi

*Select peer schools are the set of school buildings determined annually by GVSU to be the most demographically, socioeconomically, programmatically, and geographi..

Educational Goals Status

Not All Educational Goals Met

Academic Achievement

As measured by the state assessment, the school's percentage of total tested students in all tested grades identified as proficient in all tested subjects or identified as college ready as reported by the Michigan Department of Education will meet or exceed the select peer schools' mean reported percentage of total tested students in all tested grades identified as proficient in all tested subjects or identified as college ready.

Academic Growth

As measured by the state assessment, the school's mean student growth percentile rank in English language arts and math will meet or exceed the select peer schools' mean student growth percentile rank.

Compliance Reporting Condition

Exceeds Standards

Exceeds Standards: At least 95% of board and school documents (combined) submitted to Epicenter on time

Meets Standards: At least 85% of board and school documents (combined) submitted to Epicenter on time

Does Not Meet Standards: Less than 85% board and school documents (combined) submitted to Epicenter on time

Financial Condition

Exceeds Standards

Exceeds Standards: Submitted to Epicenter on-time, unqualified opinion, and no significant deficiencies or material weaknesses

Meets Standards: Submitted to Epicenter on-time, unqualified opinion, one or two significant deficiencies, and no material weaknesses

Does Not Meet Standards: Late submission to Epicenter, unqualified, one or more material weaknesses or more than two significant deficiencies, OR qualified opinion



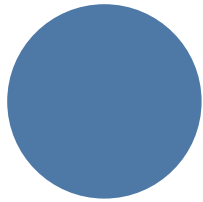
2018-19 School Performance Report

Evergreen Academy



2018-19 Student Resident Districts

Student Resident Districts Legend



Blue: Kalamazoo 100%

2018-19 Attendance Rate

90%

2018-19 Free and Reduced Lunch

69%

2018-19 Special Education Enrollment

0%

3 YR Enrollment

