

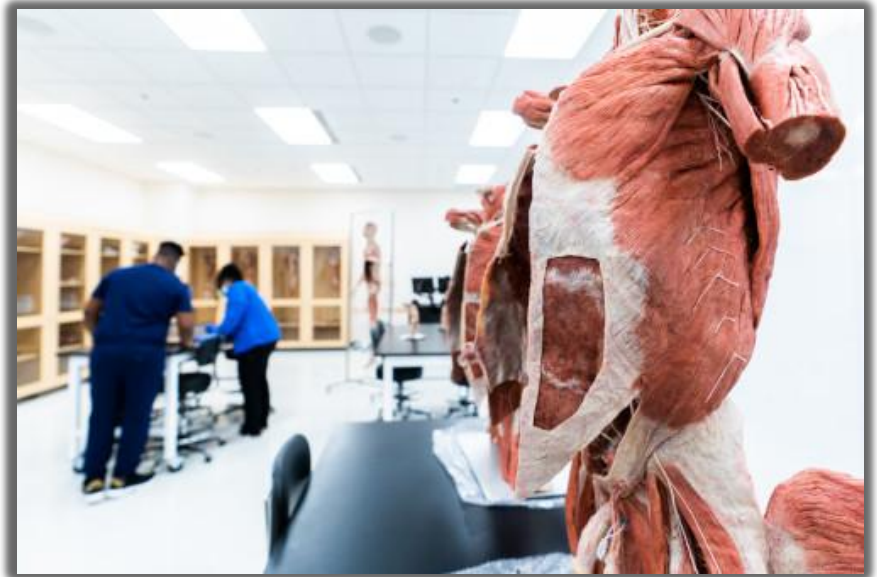
Anatomy Lab – DCIH 312

- The Anatomy Lab offers a variety of tools allowing students to interact with different parts of the human body.
- Plastinated specimens are authentic human specimens and present an up-close look at human anatomy.



Anatomy Lab – DCIH312

- Plastinates are accurate representations of preserved bodies illustrating all functional structures perfectly.



Anatomy Lab – DCIH312



Anatomy Lab – DCIH312



Anatomy Lab – DCIH312

