

Plant Basics

Part 1: Plant Types

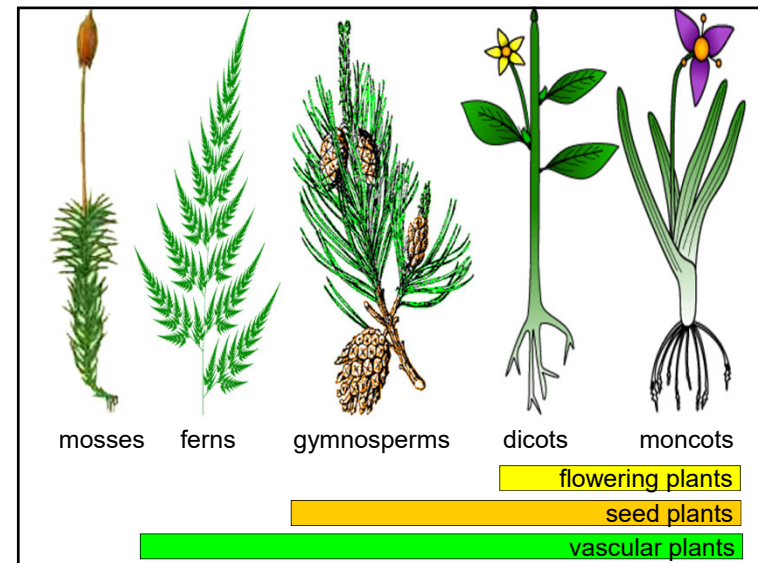
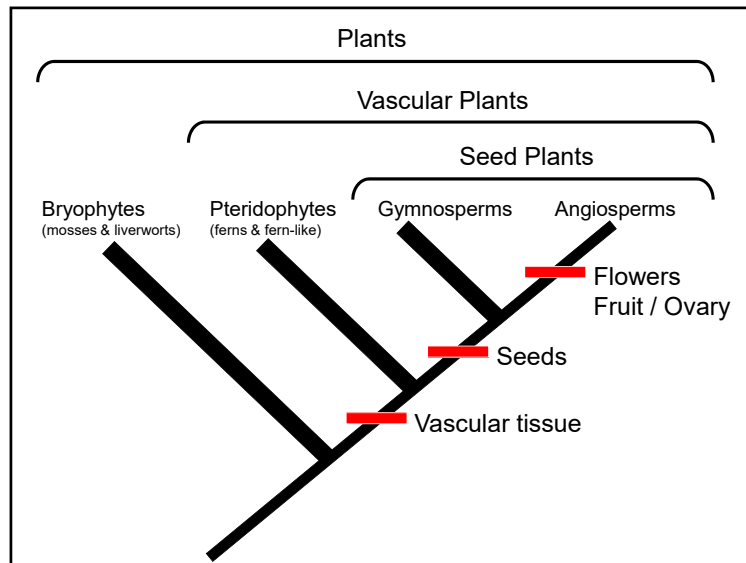
Growth Forms

Aquatic

- Submerged (underwater, typically limp out of water)
- Floating (on water surface)

Terrestrial or Aquatic Emergent (sticks out of water)

- Woody (has woody stems)
 - Shrubs (short, multiple stems)
 - Trees (tall, main trunk)
- Non-woody (Herbaceous)
 - Graminoid (grass-like)
 - Non-graminoid (Forb)

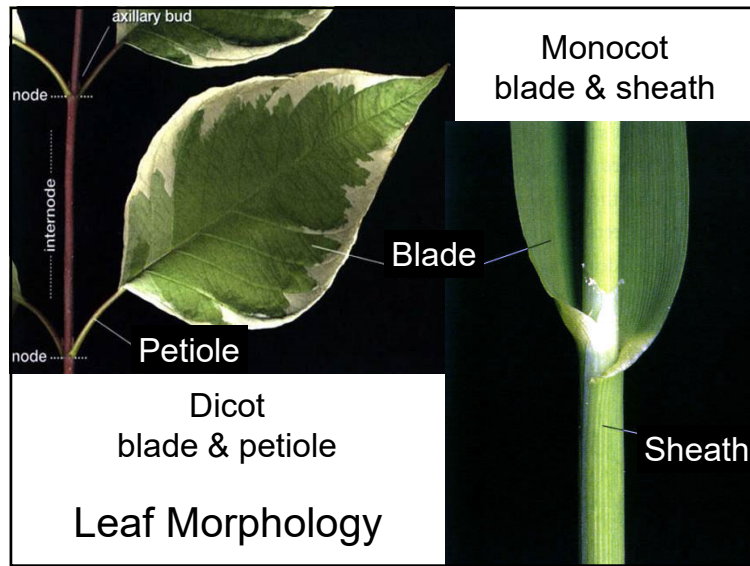
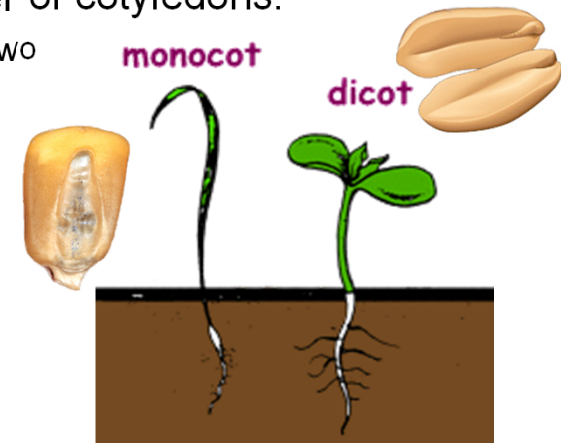


Monocots vs Dicots

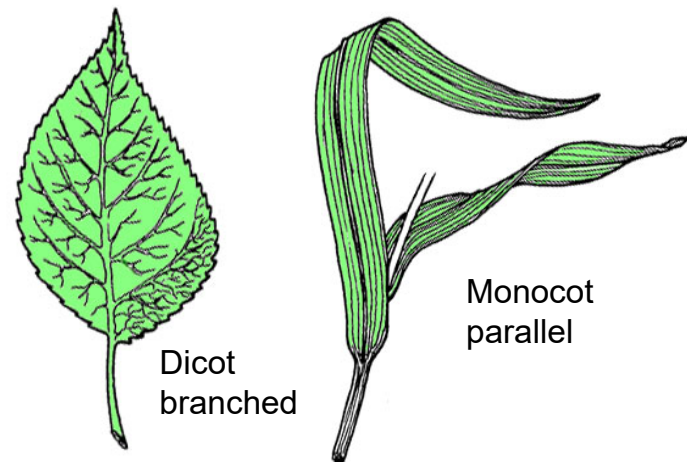
Flower Parts	• 3	• 4/5
Veins	• Parallel	• Branched
Blade &	• Sheath	• Petiole
Roots	• Fibrous	• Taproot
Vascular bundles	• Scattered	• Ringed
Cotyledons	• 1	• 2

Number of cotyledons:

one vs. two

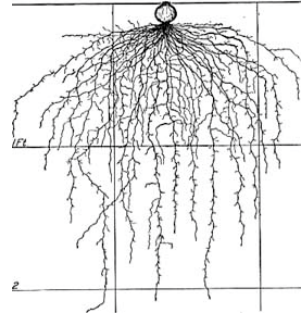


Leaf Venation



Dicot
tap roots

Root System



Monocot
fibrous roots

Flower Parts



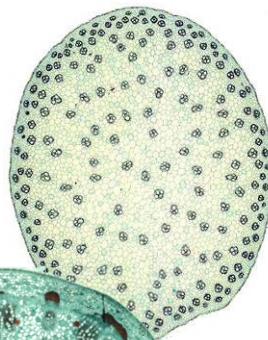
Dicot
multiples of five (or 4)

Monocot
multiples of three

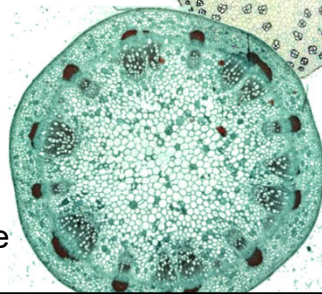


Vascular bundle arrangement

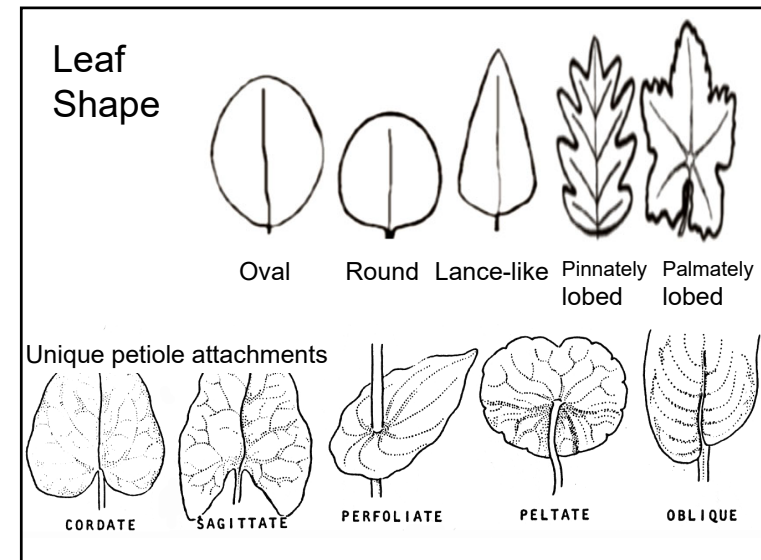
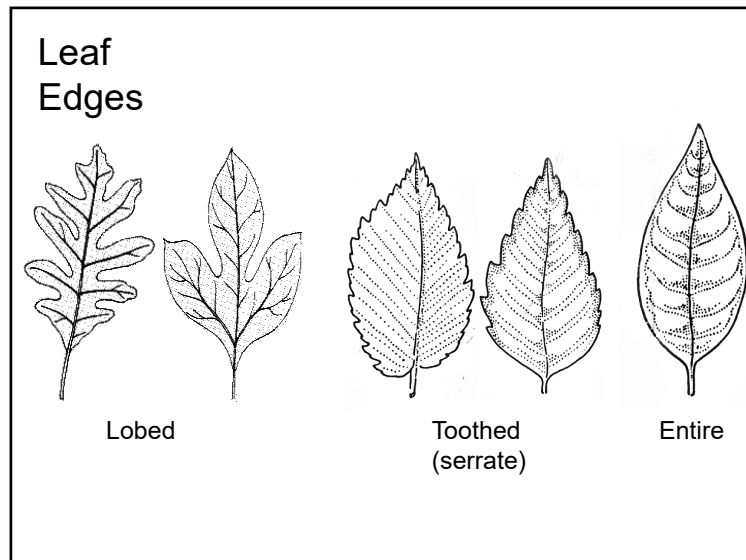
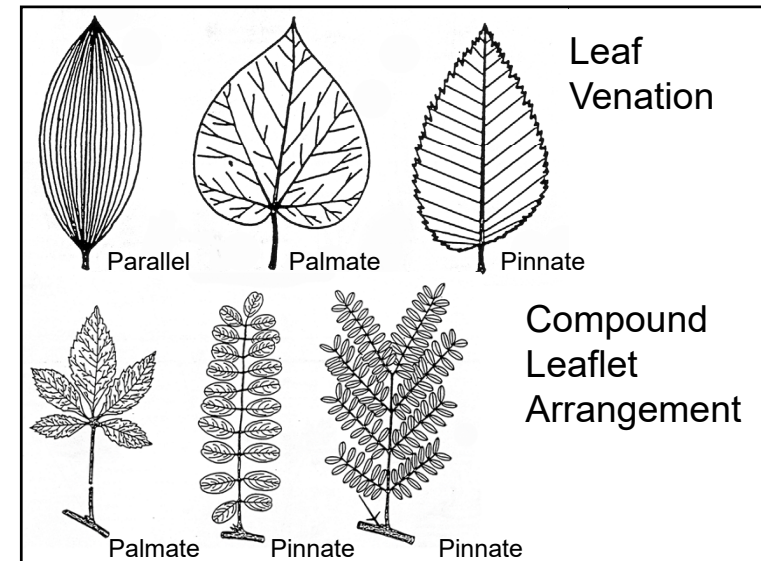
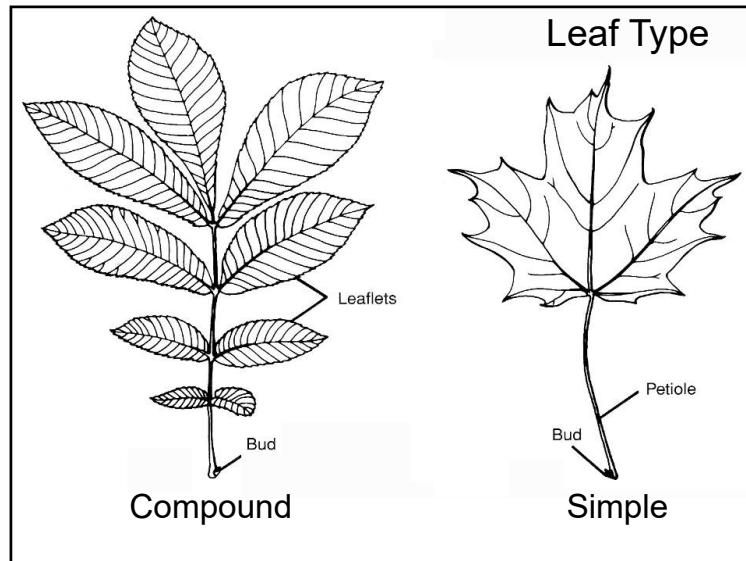
Monocots
unarranged / scattered



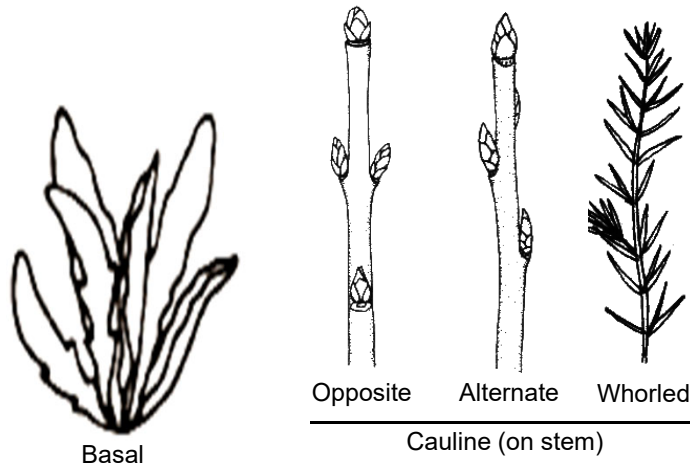
Dicots
arranged in a circle



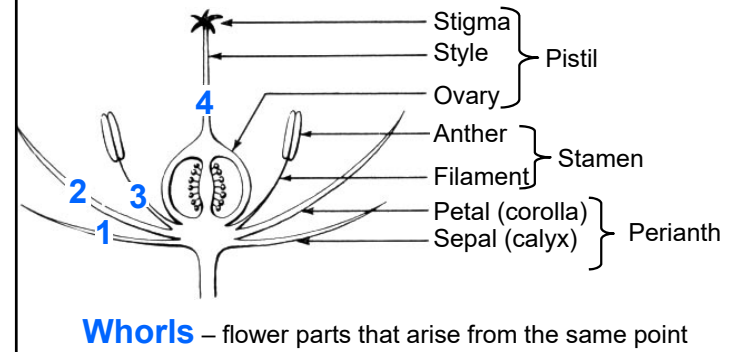
Plant Basics Part 2: Common Plant Terms



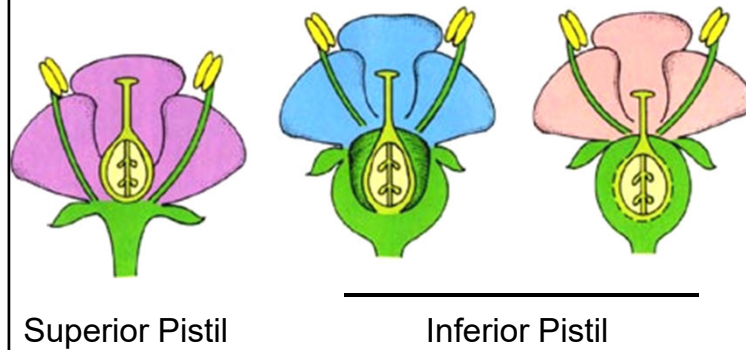
Leaf Arrangement



Flower Parts



Pistil Position



Inflorescence Types

