



Grand Valley State University

Accountability Report 2013-2014



Principles of Accountability

Executive Summary:

Grand Valley State University annually submits this report to stakeholders – the people who count on this university to shape and produce educated persons ready for employment and graduate school.

The state Legislature has adopted a higher education funding plan that ties a small portion (1.7%) of the appropriation to university performance measures. Grand Valley was rewarded for its performance in graduation rates and the number of degrees awarded in STEM and other critical fields. The Business Leaders for Michigan also issued performance results for public universities in Michigan, and again, Grand Valley shows best-in-class results.

The university produces excellent results in graduation and retention rates, while keeping tuition and administrative costs low.

This report is divided into six easy-to-read sections, using data from outside sources, that show Grand Valley succeeds in its mission and is fiscally responsible and accountable.



For more information on Grand Valley's performance and efficiencies visit:

www.gvsu.edu/accountability

www.gvsu.edu/strategicplanning

<http://www.gvsu.edu/budgets/grand-valley-state-university-section-245-reporting-8.htm>

<http://www.blmperformancetracker.com/gvsu/>



Measures of Student Success



Comparative Academic Statistics for New Students Entering Michigan Public Universities

Fall 2011	
Median Composite ACT Score	
U of M-Ann Arbor	30
Michigan Tech	25
Grand Valley	24
Michigan State	24
U of M-Dearborn	24
Northern	23
Central	22
Oakland	22
U of M-Flint	22
Western	22
Eastern	21
Ferris	21
Saginaw Valley	21
Wayne State	21
Lake Superior	20

Source: 2013 Barron's College Profiles

U of M-Dearborn data-
Midpoint of College Board Handbook 2013 Range

Fall 2012	
Mid-50% ACT Score	
U of M-Ann Arbor	28-32
Michigan Tech	24-29
Michigan State	23-28
U of M-Dearborn	21-27
Grand Valley	21-26
Oakland	20-26
Central	20-25
Lake Superior	20-25
U of M-Flint	19-25
Western	19-25
Eastern	19-24
Ferris	19-24
Northern	19-24
Wayne State	18-26
Saginaw Valley	18-24

Source: College Board Handbook 2014

U of M-Dearborn data-
Collegeapps.about.com

Fall 2012	
GPA 3.0 or Higher	
U of M-Ann Arbor	100%
Michigan State	95%
Grand Valley	93%
Michigan Tech	93%
U of M-Dearborn	85%
Oakland	79%
Central	78%
U of M-Flint	74%
Wayne State	68%
Western	67%
Eastern	64%
Ferris	64%
Saginaw Valley	64%
Lake Superior	56%
Northern	50%

Source: College Board Handbook 2014

Lake Superior- Most recently published data was Fall 2004
Term

Northern- Most recently published data was Fall 2011 Term



Freshman to Sophomore Retention Rate

University of Michigan- Ann Arbor	97%
Michigan State University	91%
Michigan Technological University	83%
Grand Valley State University	82%
University of Michigan-Dearborn	82%
Central Michigan University	76%
Wayne State University	75%
Eastern Michigan University	75%
University of Michigan- Flint	74%
Western Michigan University	73%
Northern Michigan University	72%
Oakland University	70%
Ferris State University	70%
Saginaw Valley State University	70%
Lake Superior State University	70%



Source: IPEDS

Graduation Rates



University of Michigan-Ann Arbor	91%
Michigan State University	79%
Grand Valley State University	66%
Michigan Technological University	66%
Central Michigan University	57%
Western Michigan University	56%
Ferris State University	53%
University of Michigan-Dearborn	52%
Northern Michigan University	44%
Oakland University	43%
Lake Superior State University	39%
Saginaw Valley State University	38%
Eastern Michigan University	37%
University of Michigan-Flint	37%
Wayne State University	28%

Source: IPEDS, Fall 2006 Cohort

Pass Rates of Graduates on Licensure Exams

Program	Pass Rate	National Benchmark
Athletic Training	100%	69.5%
Engineering *	100%	85.1%
Military Police Basic Training Program	100%	
Physician Assistant	100%	93%
Police Academy	100%	
Nursing *	95%	87%
Therapeutic Recreation	93.6%	73.6%
Physical Therapy	92.5%	
Occupational Therapy	92.3%	85%
Education *	91.3%	85.1% (MI)
Medical Laboratory Science	89%	86%
Accounting *	73.8%	3 rd among 27

Source: Institutional Analysis

* Undergraduate



National Ranking and Recognition

One of “America’s 100 Best College Buys”

Institutional Research and Evaluation, Inc.

**Top 5 Public Regional Universities in the
Midwest**

U.S. News & World Report, Sept. 2013

Best in the Midwest

U.S. News and World Report, Sept. 2013

Best Business School for 2014

Princeton Review, Oct. 2013

Military Friendly School

Victory Media, Sept. 2013



Student Satisfaction

“I would recommend this school.”

97% agree “moderately”
to “extremely”

Source: MAP-Works 1st-year survey, 2012



Rissa
@CKressbach



Follow

I love showing people around campus,
makes me realize how much laker pride I
have **#gvsu**



Nu Gamma Tr3 @LLBJ_theGREAT

1) Picking GVSU over UofM RT @JayRachelle What's the best
decision you think you've made? Are you overall happy with your
choices in life?



Tyler
@tlehne

Roamed around campus today for a
bit and I've come to two realizations:
1. I love my school and 2. I'm ready
for Fall semester. **#gvsu @GVSU**

“Satisfied with academic life on campus.”

92% agree “moderately”
to “extremely”

Source: MAP-Works 1st-year survey, 2012



Erica
@elbush



Follow

Kudos to **@GVSU** on their opening of the
Detroit Center. Day in, day out, I'm proud of
where I came from. **#GoLakers**



Employment After Graduation



Employed in Michigan

81.4%

Employed in West Michigan

71.5%

Source: 2011-2012 GVSU Postgraduate Employment Report

Access and Affordability Measures



Enrollment Records

Grand Valley enrolled the largest number of freshmen, minority, out-of-state, and international students in its history.

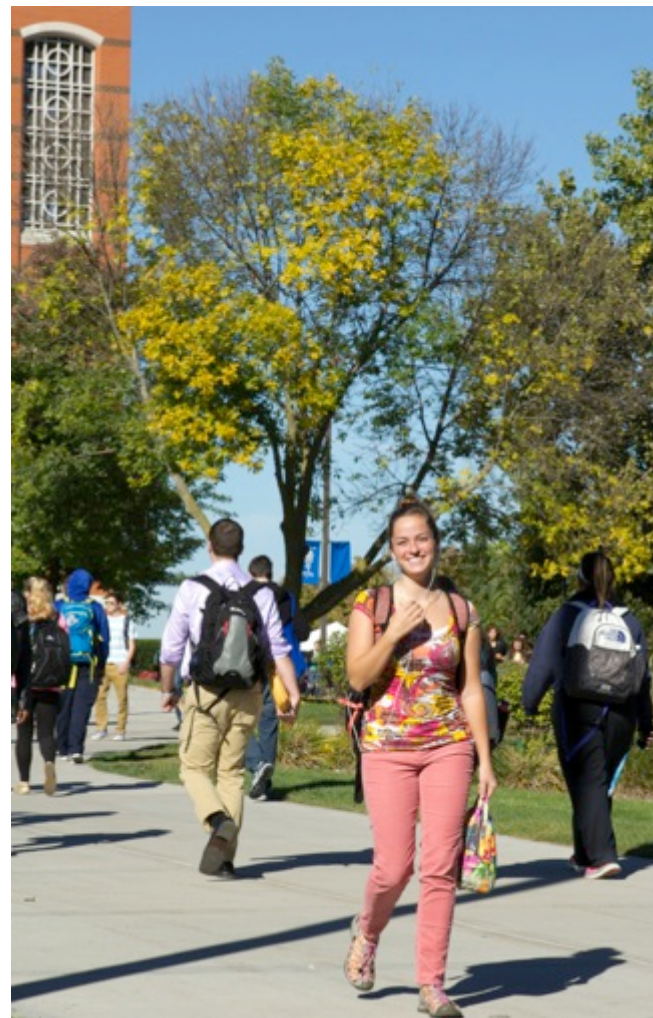


	2012	2013
First-Year Students	4,005	4,124
Minority Students	3,581	3,710
Out-of-State Students	1,168	1,260
International Students	368	378

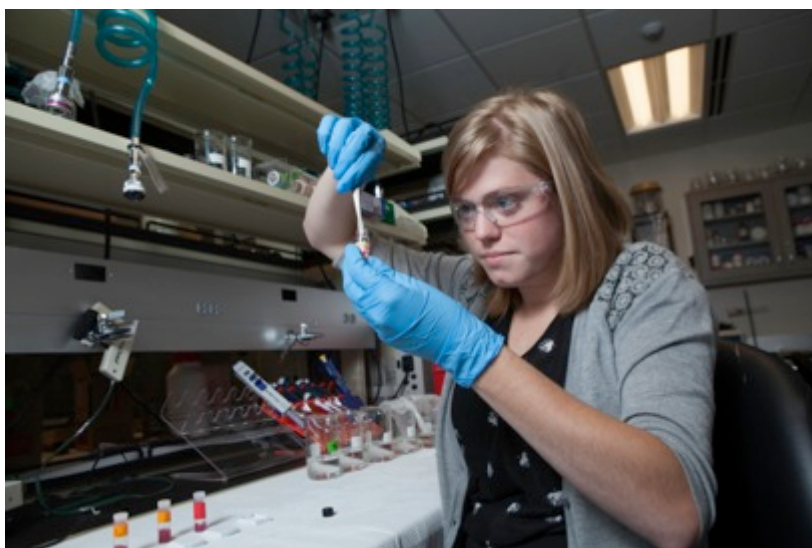
2013 Fall Headcount

Michigan State	48,304
U of M-Ann Arbor	43,519
Wayne State	27,897
Central	24,541
Grand Valley	24,477
Western	24,172
Eastern	23,027
Oakland	20,169
Ferris	14,707
Saginaw Valley	10,245
U of M-Dearborn	9,003
Northern	8,879
U of M-Flint	8,413
Michigan Tech	6,971
Lake Superior	2,367

Source: HEIDI and WSU Website



Michigan Resident Undergraduate Headcount



Michigan State	30,319
Central	19,962
Grand Valley	19,941
Eastern	18,133
Wayne State	17,831
Western	17,487
U of M-Ann Arbor	16,880
Oakland	16,283
Ferris	12,484
Saginaw Valley	8,587
U of M-Dearborn	6,946
Northern	6,866
U of M-Flint	6,582
Michigan Tech	4,279
Lake Superior	2,257

Source: HEIDI and WSU Website

Changes in Enrollment

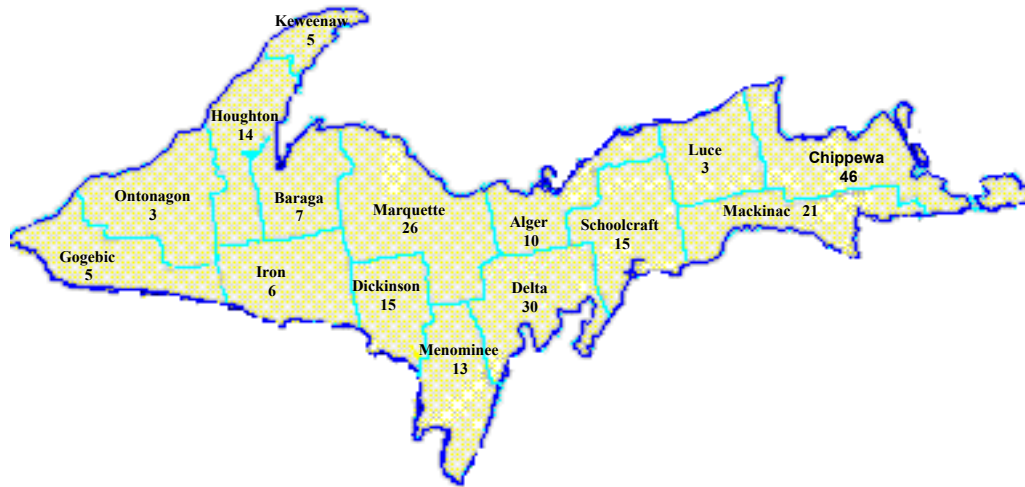


12-year % Change

Grand Valley	43.6%
Oakland	39.5%
U of M-Flint	36.5%
Saginaw Valley	36.1%
Ferris	35.9%
U of M-Ann Arbor	18.2%
Michigan State	13.4%
U of M-Dearborn	12.0%
Northern	11.6%
Central	6.6%
Michigan Tech	4.2%
Wayne State	2.6%
Eastern	-1.6%
Western	-11.5%
Lake Superior	-18.6%

Source: FYES from HEIDI, Wayne State calculation estimate

Geographic Origin



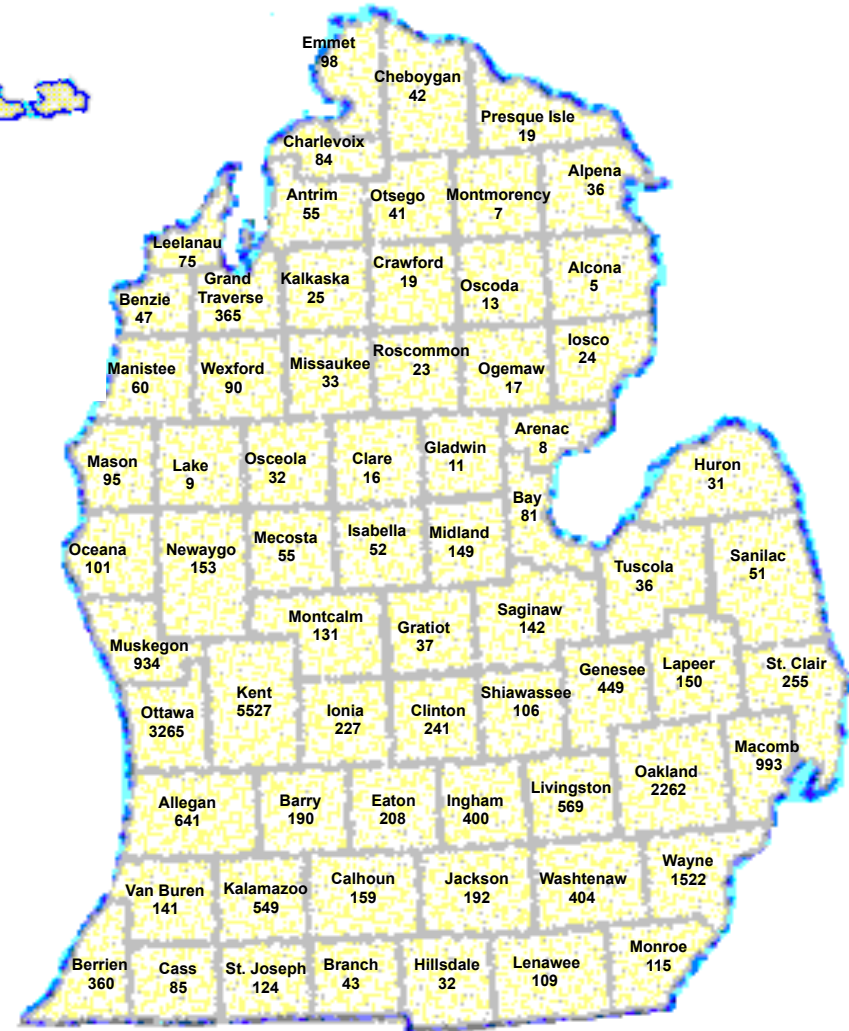
Geographic Origin Fall Semester 2013

Michigan Residents	22,839
Other States	1,260
Other Countries	378

Total 24,477

Top 6 Counties

Kent	Wayne
Ottawa	Macomb
Oakland	Muskegon



First-time Student Annual Tuition

First-time Student Annual Tuition

Michigan Tech	\$13,728
U of M-Ann Arbor	\$13,142
Michigan State	\$12,909
Central	\$11,220
Wayne State	\$11,094
Ferris	\$10,950
U of M-Dearborn	\$10,854
Western	\$10,655
Oakland	\$10,613
Grand Valley	\$10,454
Lake Superior	\$10,085
U of M-Flint	\$9,844
Eastern	\$9,664
Northern	\$9,262
Saginaw Valley	\$8,423

10-year Tuition Change

Central	115.0%
Wayne State	110.3%
Oakland	101.8%
Western	92.5%
Michigan State	91.3%
U of M-Flint	86.7%
U of M-Dearborn	85.9%
Grand Valley	85.1%
Lake Superior	84.9%
Michigan Tech	84.5%
Northern	81.3%
Ferris	81.2%
Saginaw Valley	75.5%
Eastern	71.7%
U of M-Ann Arbor	64.8%

Source: HEIDI



Financial Aid Available to GVSU Students



Institutional Financial Aid Commitment

	Amount	Increase
2009-10	\$24,545,728	8.44%
2010-11	\$26,096,965	6.31%
2011-12	\$31,139,318	19.32%
2012-13	\$33,688,333	8.18%
2013-14	\$35,134,477	4.29%

Source: GVSU Financial Aid Office



Types of Financial Aid Available 2012-2013

Need-Based Grants	\$48,711,119
Merit Scholarships	\$27,337,877
Loans	\$182,745,807
Work Study	\$1,755,693
TOTAL	\$260,550,496

Source: GVSU Financial Aid Office



Access and Affordability Measures

Net Cost of Tuition for Typical GVSU Student



Tuition (2013-2014)	\$10,454
Average Gift Aid	\$3,946
Average Net Cost	\$6,508

Source: Financial Aid Office Estimate

Student Loan Default Rate

University of Michigan - Ann Arbor	1.8%
Grand Valley State University	4.2%
Michigan State University	4.7%
Michigan Technological University	4.8%
Oakland University	5.1%
Central Michigan University	5.1%
University of Michigan - Dearborn	5.9%
Western Michigan University	6.3%
Ferris State University	7.1%
Saginaw Valley State University	7.2%
University of Michigan - Flint	7.2%
Eastern Michigan University	9.8%
Wayne State University	9.8%
Lake Superior State University	10.1%
Northern Michigan University	10.8%

Source: Office of Federal Student Aid, US Department of Education



The Grand Finish

Grand Valley students are encouraged to graduate in four years.

More than 2,700 students received the Grand Finish Grant in 2012. Students who are on track to finish their degree in four years receive up to \$1,000.

Of the 2013 graduates who earned a degree in four years or less, 33% had no debt.



Grand Valley and the State of Michigan



Appropriation per Student

	2009-10	2010-11	2011-12	2012-13	2013-14
Wayne State	8,927	8,850	7,225	7,396	7,682
Michigan Tech	7,882	7,278	6,125	6,468	6,816
U of M-Ann Arbor	7,918	7,654	6,399	6,492	6,506
Michigan State	6,742	6,436	5,461	5,564	5,579
Lake Superior	5,571	5,316	4,707	5,028	5,058
Northern	5,510	5,363	4,468	4,747	4,872
State Average	5,747	5,523	4,597	4,694	4,776
Western	5,127	4,927	4,269	4,342	4,503
Ferris	4,390	4,168	3,505	3,664	3,735
Eastern	4,346	4,323	3,521	3,551	3,650
U of M-Dearborn	4,046	3,924	3,223	3,372	3,375
Central	3,899	3,722	3,112	3,168	3,267
U of M-Flint	3,906	3,542	2,788	2,917	2,961
Saginaw Valley	3,563	3,366	2,665	2,841	2,828
Oakland	3,512	3,368	2,719	2,773	2,797
Grand Valley	3,043	2,867	2,365	2,474	2,588

Source: HEIDI

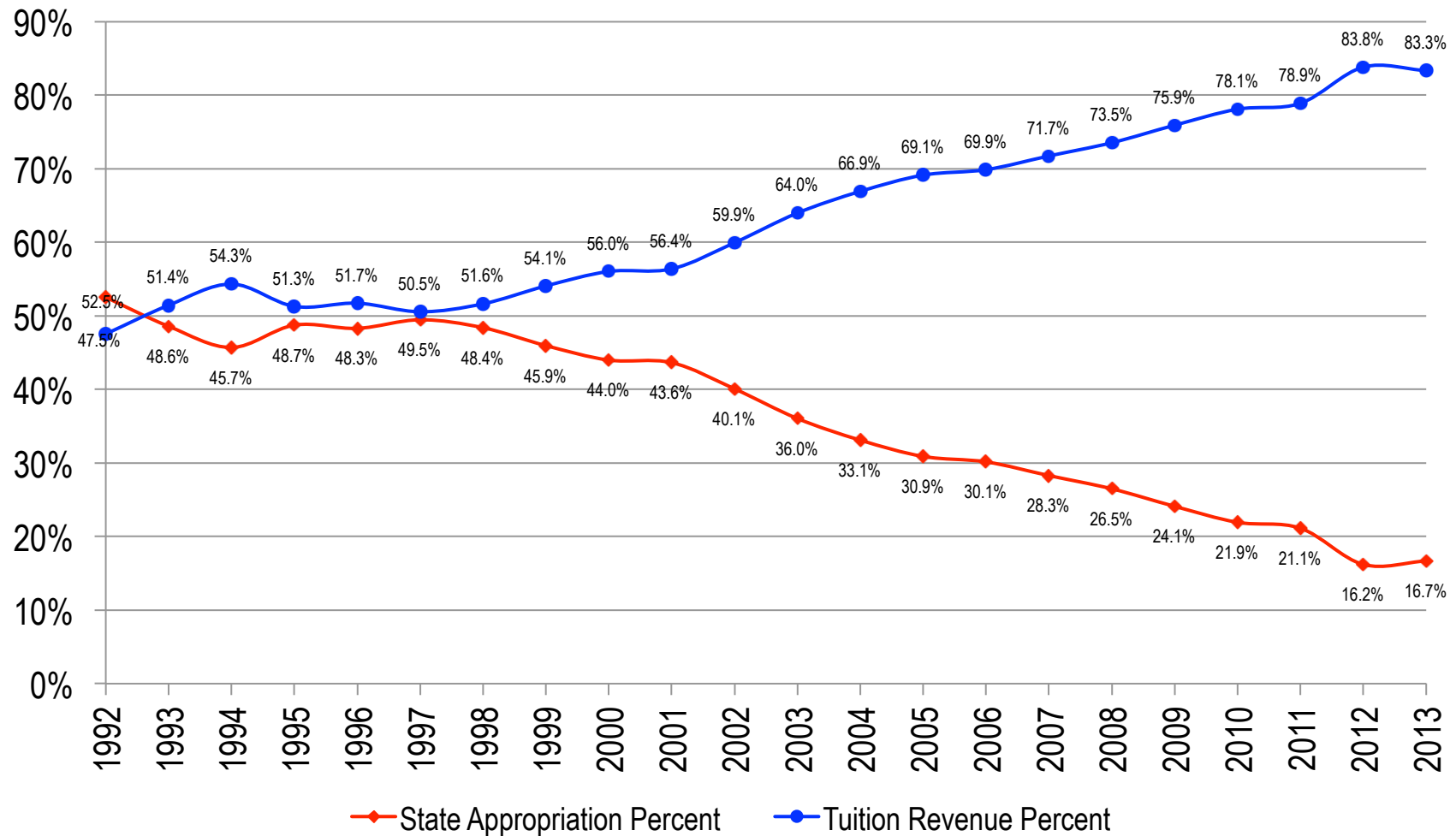
Change in Degrees Awarded in Last 10 Years

	Degrees Granted		10-year Change		Share of Statewide Change
	2001-02	2011-12	#	%	
University of Michigan-Ann Arbor	9,948	12,142	2,194	22.1%	22%
Grand Valley State University	3,223	5,347	2,124	65.9%	21%
Michigan State University	9,703	11,228	1,525	15.7%	15%
Ferris State University	2,291	3,469	1,178	51.4%	12%
Oakland University	2,679	3,598	919	34.3%	9%
Saginaw Valley State University	1,016	1,650	634	62.4%	6%
University of Michigan-Flint	1,073	1,489	416	38.8%	4%
Northern Michigan University	1,333	1,642	309	23.2%	3%
Michigan Technological University	1,255	1,536	281	22.4%	3%
Central Michigan University	5,831	6,045	214	3.7%	2%
Wayne State University	5,387	5,591	204	3.8%	2%
Western Michigan University	5,223	5,386	163	3.1%	2%
University of Michigan-Dearborn	1,603	1,751	148	9.2%	1%
Eastern Michigan University	4,060	3,983	-77	-1.9%	-1%
Lake Superior State University	624	547	-77	-12.3%	-1%
Total	55,249	65,404	10,155	18.4%	100%

Source: IPEDS



Ratio of State Aid vs. Tuition at Grand Valley



Source: HEIDI --1977-2013 Actual, excludes One Time State Appropriations.

Efficiency Measures



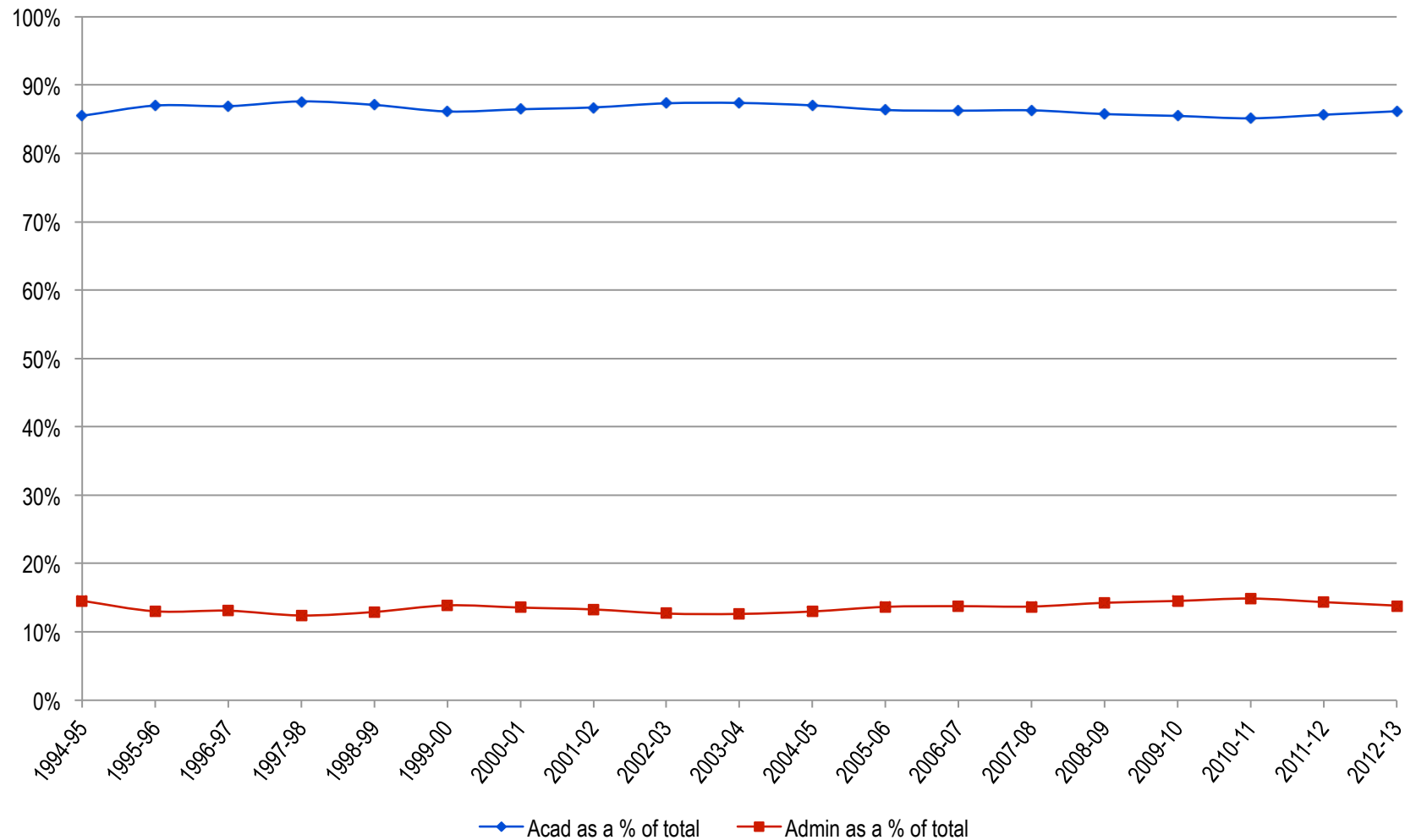
Average Number of Students per Faculty



U of M-Ann Arbor	11
Wayne State	12
Michigan Tech	12
Michigan State	13
Western	14
Lake Superior	14
U of M-Dearborn	15
Central	15
Ferris	16
U of M-Flint	16
Eastern	16
Grand Valley	18
Oakland	19
Saginaw Valley	20
Northern	20

Fall 2011
Source: HEIDI

Academic vs. Administrative Expenses



Source: 1994-2013 HEIDI

Environmental Sustainability



Grand Valley is nationally recognized for its commitment to sustainability.

- In March 2013, Grand Valley became the only university in the state and one of 45 in the country to receive a gold status using the Association for the Advancement of Sustainability in Higher Education Sustainability Tracking Assessment Reporting System.
- In April 2013, Grand Valley was named one of the country's most environmentally responsible colleges by The Princeton Review for the fourth year in a row.
- In August 2013, Grand Valley was named one of the country's greenest universities by the Sierra Club, the largest national grassroots environmental organization in the U.S., for the second year in a row. The university is the highest-ranking Michigan institution on the list.

Grand Valley provides practical, hands-on opportunities for the campus community.

- In June 2013, Grand Valley was among the first to sign the national Green Chemistry Commitment, an agreement that states all chemistry majors, by the time they graduate, will have proficiency in the growing field of green chemistry.
- Grand Valley offers a student-led Green Team and Eco Reps program. From September 2012-May 2013, students composted more than 27,500 pizza boxes from the living centers and received statewide attention for the program.

Bus Partnership



GVSU Investment with The Rapid: \$2,600,058

GVSU Community Saves: 2,963,512 Rides

21,157,664 Vehicle Miles Avoided

\$11,954,080 Vehicle Operating Costs Avoided

Note: Calculations based on average trip distance and 2013 IRS Standard Mileage Rates



Private-Public Partnership

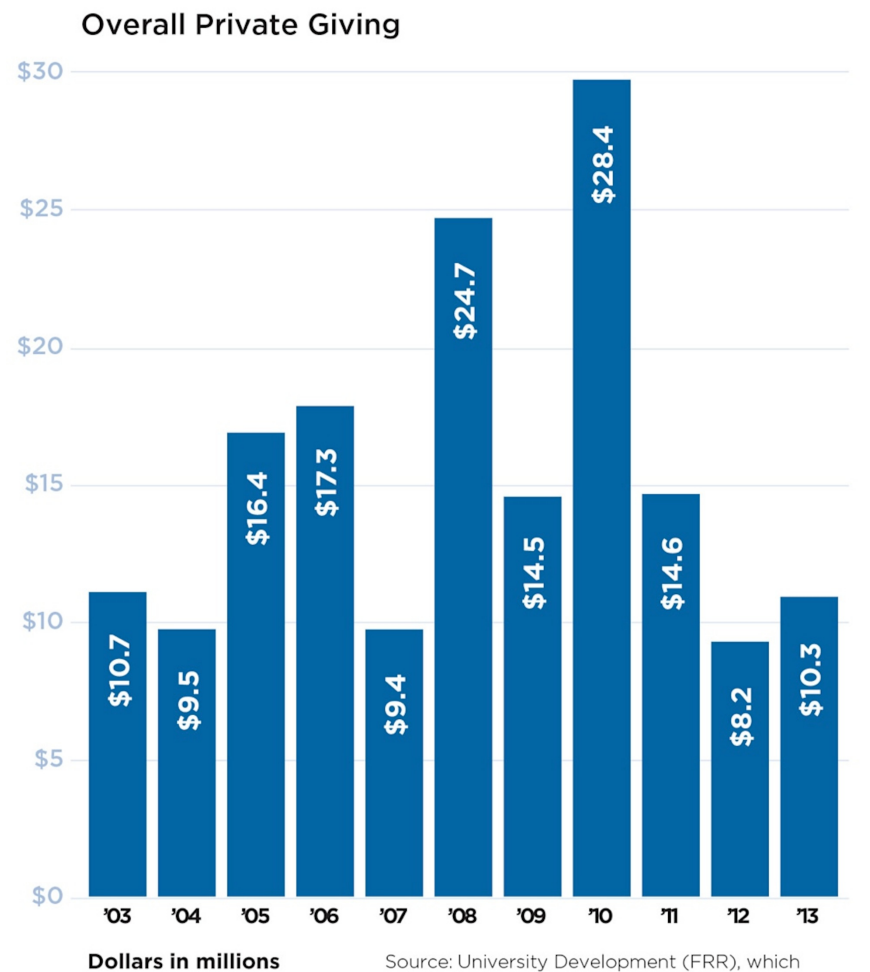


Private Giving to Grand Valley

Overall Private Giving for Fiscal Year 2013

The Grand Valley University Foundation continued its fundraising momentum with a very successful year raising more than \$10 million to exceed its annual goal. Support from alumni increased with total alumni gifts and pledges climbing by 28 percent over the prior year. All categories of giving showed healthy increases this year as the university endowment hit a record high of \$88 million.

None of this would be possible without the support of this year's 15,900 donors including alumni, community members, corporations, foundations, faculty and staff, and students and their families. As this base expands and becomes more diverse, the future for Grand Valley State University students becomes more and more stable.



Source: University Development (FRR), which includes outright gifts, pledges, bequests, and gifts in kind to WGUV and to Grand Valley State University.

Gifts and pledges received by Grand Valley State University and the Grand Valley University Foundation totaled \$10.3 million this fiscal year.



Giving Highlights

Private gifts were key in the openings of the Mary Idema Pew Library Learning and Information Commons, the L. William Seidman Center and the Robert B. Annis Field Station.



Mary Idema Pew Library Learning and Information Commons



L. William Seidman Center



Robert B. Annis Field Station

Economic Development



Grand Valley Construction in 2013



2013 Projects

Grand Traverse County:	\$100,000
Kent County:	\$13,050,180
Muskegon County:	\$3,433,359
Ottawa County:	\$64,843,305
Total:	\$81,426,844

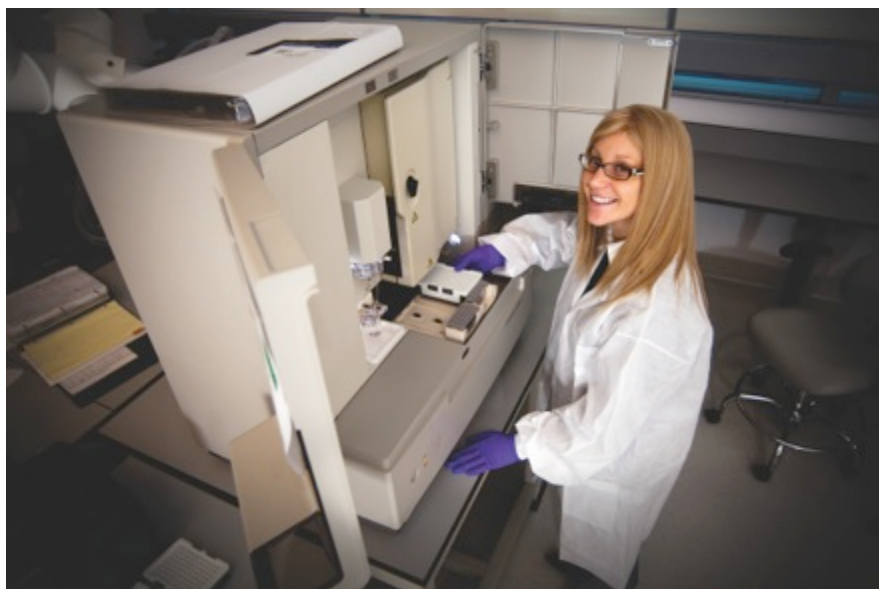
Source: Facilities Planning

Total construction jobs created: 1,782

Community Impact of Grand Valley Alumni

Lakers are Leaders

Grand Valley alumni leaders shape their professions and communities. While Lakers live throughout the world, their impact is greatest in Kent, Ottawa and Muskegon counties, where nearly half of all graduates live or work.



Top Employers of Grand Valley Alumni:

Amway Corporation
Auto-Owners Insurance
BDO Seidman
Fifth Third Bank
GE Aviation
Gentex Corporation
Gordon Food Service
Haworth
Herman Miller
Meijer
Perrigo Company
Spectrum Health
State of Michigan
Steelcase, Inc.
Wolverine World Wide

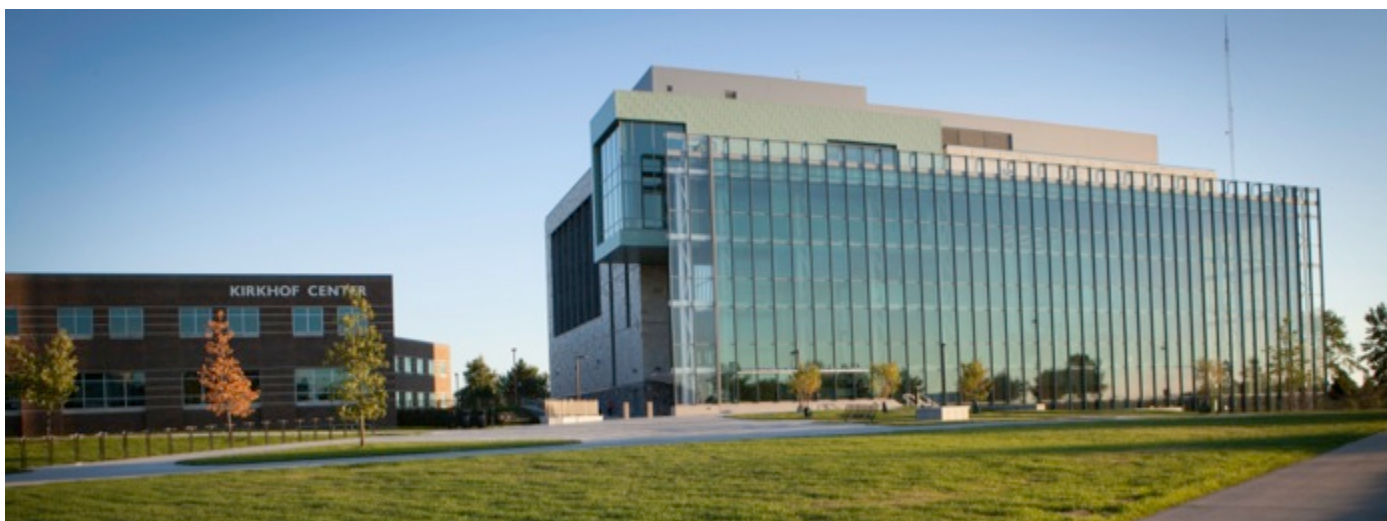
Income Tax Remittances by GVSU Employees



Year	Grand Rapids	Muskegon	Walker	Michigan
2008	\$584,651	\$12,544	\$48,697	\$5,339,732
2009	\$631,297	\$13,256	\$52,020	\$5,712,956
2010	\$743,468	\$15,184	\$56,654	\$6,026,448
2011	\$824,378	\$17,009	\$60,185	\$6,250,887
2012	\$872,271	\$18,729	\$63,081	\$6,526,209

Source: GVSU Payroll Office

Economic Impact in Region



\$722 million

Economic impact of GVSU's 27,900 students, faculty, and staff in Kent, Ottawa, and Muskegon counties in fiscal year 2011-2012

Nearly 40,000

Alumni in Kent, Ottawa, and Muskegon counties

10,586

Total estimated regional employment attributed to GVSU

Source: GVSU- using model provided by W.E. Upjohn Institute for Employment Research

Grand Valley Ranks Best in Class

Best in Class Marks from Business Leaders for Michigan

High Retention Rates

High Graduation Rates

Degrees Awarded in Critical Skills

Low Administrative Costs

High Economic Impact

Best in Class Marks from State of Michigan

High Retention Rates

High Graduation Rates

Degrees Awarded in Critical Skills

Increase in Pell-eligible Students

Accessibility by Qualified Students



University Performance Funding

Table 2: FY 2013-14 Enacted
University Performance Funding

		Funding Proportional to Share of Total				Scored vs. National Carnegie Peers												
% of formula:		22.2%		11.1%		66.7%												
Funding per unit:		\$340.46 per completion		\$ 0.0019 per dollar														
University	FY 2012-13 Year-to-Date	Critical Skills Undergrad Completions	Funding	Research & Develop Expendis	Funding	Six-year Graduation Rate	Total Degree Completions	Inst Support as % of Core Expendis	Total Score	Total Undergrad FYES	FYES- Weighted Score	Funding	*Total Performance Funding	FY 2013-14 Appropriation w/ Perf Funding	Percent Change			
Michigan State	\$245,037,000	2,664	\$906,890	\$293,704,711	\$555,802	2	3	2	7	34,841	243,887	\$2,986,649	\$4,449,300	\$249,486,300	1.82			
UM-Ann Arbor	274,156,700	2,629	895,059	728,871,000	1,379,305	3	3	2	8	27,332	218,656	2,677,669	4,952,000	279,108,700	1.81			
Wayne State	183,398,300	659	224,361	163,944,192	310,246	0	0	0	0	15,828	0	0	534,700	183,933,000	0.29			
Michigan Tech	42,579,100	903	307,474	52,917,000	100,139	3	2	2	7	5,427	37,989	465,215	872,800	43,451,900	2.05			
Western	95,487,500	1,037	353,053	27,538,940	52,114	2	2	2	6	18,272	109,632	1,342,557	1,747,700	97,235,200	1.83			
Central	71,352,300	681	231,680	7,527,977	14,246	3	3	2	8	19,275	154,200	1,888,339	2,134,300	73,486,600	2.99			
Oakland	44,964,100	918	312,539	9,531,111	18,037	0	2	0	2	13,888	27,776	340,146	670,700	45,634,800	1.49			
Eastern	66,466,700	642	218,573			0	3	0	3	15,525	46,575	570,359	788,900	67,255,600	1.19			
Ferris	44,250,700	1,212	412,718			2	3	2	7	10,956	76,692	939,173	1,351,900	45,602,600	3.06			
Grand Valley	55,436,000	1,182	402,270			3	3	2	8	19,668	157,344	1,926,840	2,329,100	57,765,100	4.20			
Saginaw Valley	25,656,700	362	123,075			2	0	0	2	8,288	16,576	202,990	326,100	25,982,800	1.27			
UM-Dearborn	22,237,300	356	121,202			2	0	0	2	5,927	11,854	145,164	266,400	22,503,700	1.20			
UM-Flint	19,526,600	375	127,671			2	2	0	4	5,591	22,364	273,870	401,500	19,928,100	2.06			
Northern	40,856,600	472	160,759			2	3	2	7	8,194	57,358	702,408	863,200	41,719,800	2.11			
Lake Superior	12,046,100	183	62,452			2	2	0	4	2,408	9,632	117,954	180,400	12,226,500	1.50			
TOTAL:	\$1,243,451,700	14,274	\$4,859,778	\$1,284,034,931	\$2,429,889	28	31	16	75	211,420	1,190,535	\$14,579,333	\$21,869,000	\$1,265,320,700	1.76			

Total performance funding: \$21,869,000

Additional MPERS reimbursement: \$2,000,000
Additional MSU Ag/Extension: 1,000,000
Total Funding Increase: \$24,869,000

Data Notes	Source	Years	Other
Critical skills undergrad awards	State HEIDI	FYs 2011-2012	Removed accounting/multi-disciplinary
Research & develop expenditures	Federal IPEDS	FY 2011	Carnegie research universities only
Six-year graduation rate	Federal IPEDS*	FYs 2007-2010	
Total degree completions	Federal IPEDS*	FYs 2007-2010	Includes graduate degrees
Inst support as % of core expenditures	Federal IPEDS*	FYs 2007-2010	Measure of administrative costs
	*Via BLM/AEG		
Undergrad FYES	State HEIDI	FY 2012	

Scoring	
Top 20% nationally	3
Improving over 3 years	2
Above national median	2

*Requirements to receive performance funding amounts:

1. Restrain FY 2013-14 resident undergraduate tuition/fee rate increase to 3.75% or below
2. Participate in at least three reverse transfer agreements with community colleges (or make good-faith effort)
3. Maintain a dual enrollment credit policy that does not consider whether credits were used toward high school graduation
4. Participate in the Michigan Transfer Network

