



# Grand Valley State University Accountability Report 2010

# Principles of Accountability

## **Executive Summary**

Michigan's universities are one of the most important economic tools the state possesses, and the number of college graduates residing in a state determines the state's per capita income. Higher education has always been a public good with far-reaching effects.

Grand Valley State University issues this yearly report to show how the state and its people are receiving remarkable returns on investment. Grand Valley is frugal, efficient and student-centered. It produces high-quality graduates for Michigan's future.

## **Measures of Student Success**

Grand Valley's academic programs attract top students interested in challenges and achievements. Programs are in place to encourage students to graduate in a timely fashion, saving them time and money and putting them into the work force or allowing them to pursue advanced degrees more quickly. More than 90 percent of recent graduates are employed or in graduate school.

## **Access and Affordability Measures**

There is a direct relationship between affordability and access, and Grand Valley is committed to both. The majority of Grand Valley undergraduates are from Michigan. They pay tuition that is below the state average for public universities, and because of the commitment to financial aid, students' final cost is more than \$3,000 below the posted rate.

## **Diversity**

Grand Valley has an inclusive climate, dedicated to welcoming all so that viewpoints can be expressed in a respectful environment. Diversity is an intellectual asset and a global necessity. Events and programs focused on different ethnic and social groups augment a curriculum that encourages curiosity and critical thinking. Grand Valley's enrollment for students of color ranks in the upper half of the state's public universities.

## **Partnership with the State**

Grand Valley receives the lowest per-student funding among the state's 15 public universities. The cost of higher education has been managed, but the higher source of funding for that education has gradually shifted away from the state and onto students and their families. Public universities need a predictable and stable relationship with state government.

## **Efficiency Measures**

Grand Valley is a careful steward of the money it receives and the resources it uses. Grand Valley's cost of operation is \$2,000 less per student than the state median. The university's president, buildings, programs and curriculum are national leaders in sustainability.



### **Private-Public Partnership**

Grand Valley is celebrating its 50<sup>th</sup> anniversary. Its beginning is the ultimate example of private-public partnerships, and that relationship between the university and the region it serves continues to make Grand Valley vibrant and future-oriented. Two new spectacular academic buildings are taking shape because of generosity and belief in the results Grand Valley delivers.

### **Economic Development**

Grand Valley is a significant financial contributor to the communities in which it has campuses. More than \$640 million is pumped into West Michigan communities because of the university's activities. Grand Valley's alumni are contributing to area companies, schools and hospitals in countless ways. Grand Valley's SmartZones in Grand Rapids and Muskegon, and research projects place the university at the center of job creation and innovation. Growth on campus has pumped more than \$30 million into the local economy and provided more than 700 jobs.

### **Integration with Grand Valley's Strategic Plan**

Grand Valley's strategic plan is a map for improved performance. It requires a periodic assessment that holds the university responsible for achieving the plan's objectives. The Accountability Report is constructed using the university's principles of accountability. The Strategic Plan is available online at [www.gvsu.edu/strategicplanning](http://www.gvsu.edu/strategicplanning).





# Measures of Student Success

**Grand Valley is accountable for supporting students on their road to graduation and beyond.**



# Comparative Academic Statistics For New Students Entering Michigan Public Universities

<b>Median Composite ACT Score</b>		
U of M-Ann Arbor	29	+
Michigan Tech	25	
Grand Valley	24	
Michigan State	24	
U of M-Dearborn	24	+
Northern	23	
Central	22	
Oakland	22	
U of M-Flint	22	
Western	22	
Eastern	21	
Ferris	21	
Saginaw Valley	21	
Wayne State	21	
Lake Superior	20	

Source: [2010 Barron's College Profiles](#)

+ Midpoint of [College Board Handbook 2010](#) Range

<b>Mid-50% ACT Score</b>	
U of M-Ann Arbor	27-31
Michigan Tech	23-28
Michigan State	23-27
Grand Valley	22-26
U of M-Dearborn	21-27
Central	20-25
Western	20-25
Oakland	19-25
Lake Superior	19-24
Northern	19-24
Eastern	18-24
Ferris	18-24
Saginaw Valley	18-24
U of M-Flint	18-24
Wayne State	17-24

Source: [College Board Handbook 2011](#)

<b>GPA 3.0 or Higher</b>	
U of M-Ann Arbor	99%
Grand Valley	96%
Michigan State	94%
Michigan Tech	87%
U of M-Dearborn	84%
Central	77%
Oakland	72%
Western	69%
U of M-Flint	66%
Saginaw Valley	63%
Ferris	60%
Wayne State	59%
Eastern	57%
Lake Superior	56% *
Northern	47%

Source: [College Board Handbook 2011](#)

\* Most recently published data was Fall 2004 Term

# Freshman to Sophomore Retention Rate

University of Michigan-Ann Arbor	96%
Michigan State University	91%
Grand Valley State University	83%
Michigan Technological University	83%
University of Michigan-Dearborn	78%
Central Michigan University	76%
Wayne State University	76%
Oakland University	74%
Northern Michigan University	73%
Western Michigan University	72%
University of Michigan-Flint	72%
Eastern Michigan University	72%
Saginaw Valley State University	71%
Lake Superior State University	69%
Ferris State University	68%

Source: IPEDS  
Fall 2008 cohort



# Graduation Rates



In the last decade, Grand Valley's 6-year graduation rate has improved by 15 %.

	6-year graduation rate
University of Michigan-Ann Arbor	89.4%
Michigan State University	77.1%
Michigan Technological University	65.7%
Grand Valley State University	60.8%
<b>State Average</b>	<b>60.4%</b>
Central Michigan University	57.2%
<b>National Average (Public 4-year or above)</b>	<b>55.5%</b>
Western Michigan University	54.1%
University of Michigan-Dearborn	48.6%
Ferris State University	45.9%
Northern Michigan University	45.5%
University of Michigan-Flint	45.2%
Oakland University	40.7%
Eastern Michigan University	39.7%
Saginaw Valley State University	38.1%
Wayne State University	31.7%
Lake Superior State University	26.4%

Source: IPEDS  
Fall 2003 cohort



# Pass Rates of Graduates on Licensure Exams

Program	Pass rate	Benchmark
Engineering (UG)	100%	N/A
Nursing (MSN) -- Adult	100%	N/A
Nursing (MSN) -- Pediatric	100%	N/A
Occupational Therapy	100%	N/A
Physical Therapy	100%	N/A
Police Academy	100%	N/A
Physician Assistant	96%	N/A
Therapeutic Recreation	96%	73%
Education (UG)	95%	91%
Nursing (UG)	91%	89%
Nursing (MSN) -- Family	>90%	N/A
Clinical Laboratory Science	82%	83%
Accounting (UG)	76%	4th among 29
Accounting (GR)	75%	6th among 11
Finance	75%	75%

Source: Institutional Analysis





# National Ranking and Recognition

- Grand Valley was named one of America's 100 Best College Buys for the 15th year in a row. No other public institution in the state made the list.<sup>1</sup>
- Grand Valley's athletic program has been named the best overall Division II program in the nation, capturing the Directors' Cup for 7 years in a row.
- The Princeton Review named Grand Valley one of the best universities in the Midwest (August 2010).
- *U.S. News and World Report* ranked Grand Valley 7th in the "Top Public Regional Universities in the Midwest" (August 2010).
- Grand Valley was named the 6th safest campus in the country.<sup>2</sup>



1: Institutional Research and Evaluation, Inc., Fall 2010  
2: *The Daily Beast*



# Student Satisfaction

## Overall Rating of GVSU

- 94% “good” to “excellent”

“I would recommend this school.”

- 96% agreed “moderately”  
to “extremely”

“I would choose this school again.”

- 91% agreed “moderately”  
to “extremely”



Source: MAP-Works 1<sup>st</sup> year survey, 2009



# Employment and Placement After Graduation

	2005-06	2006-07	2007-08	2008-09
Graduates employed or in graduate school	97%	98%	96%	92%
Employed in Michigan	88%	88%	94%	88%



Source: Career Services





# Access and Affordability Measures

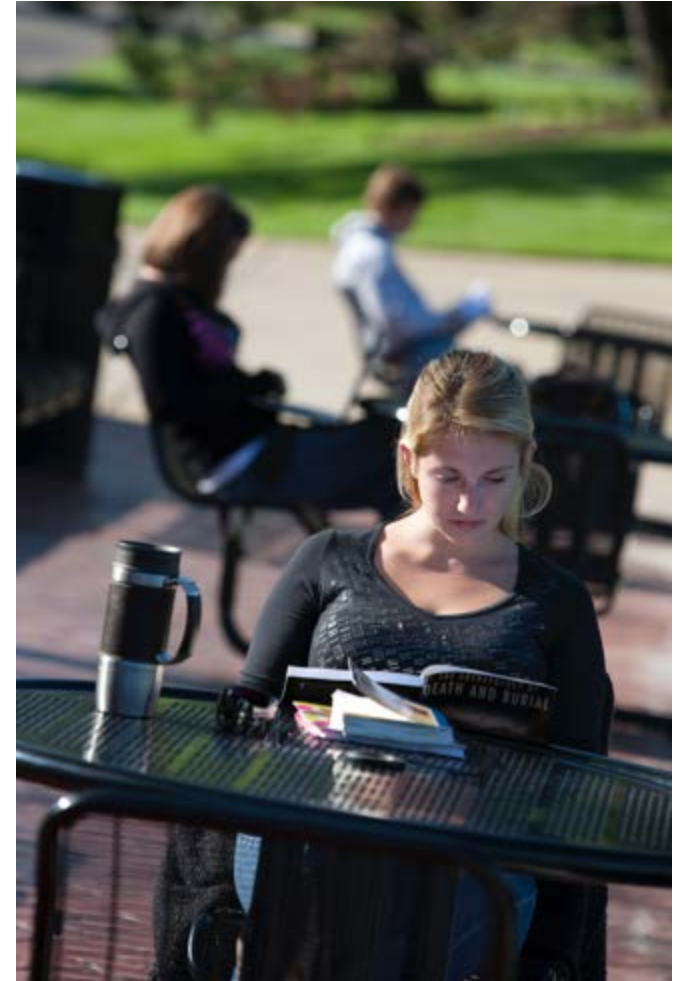
**Grand Valley serves students from across the state.**





# 2010 Fall Headcount

Michigan State	46,365
U of M-Ann Arbor	41,729
Wayne State	31,505
Central	25,831
Western	24,963
Grand Valley	24,541
Eastern	23,211
Oakland	19,053
Ferris	14,381
Saginaw Valley	10,656
Northern	9,273
U of M-Dearborn	8,885
U of M-Flint	8,056
Michigan Tech	6,948
Lake Superior	2,534



Source: HEIDI and institutional reports



# Michigan Resident Undergraduate Headcount



Michigan State	30,447
Central	21,187
Grand Valley	20,226
Wayne State	19,968
Western	18,409
Eastern	17,728
U of M-Ann Arbor	17,400
Oakland	15,331
Ferris	12,565
Saginaw Valley	8,423
Northern	7,266
U of M-Dearborn	6,972
U of M-Flint	6,588
Michigan Tech	4,448
Lake Superior	2,464

Source: HEIDI and institutional reports; SVSU data is 2009



# Changes in Enrollment



## 10-year % change

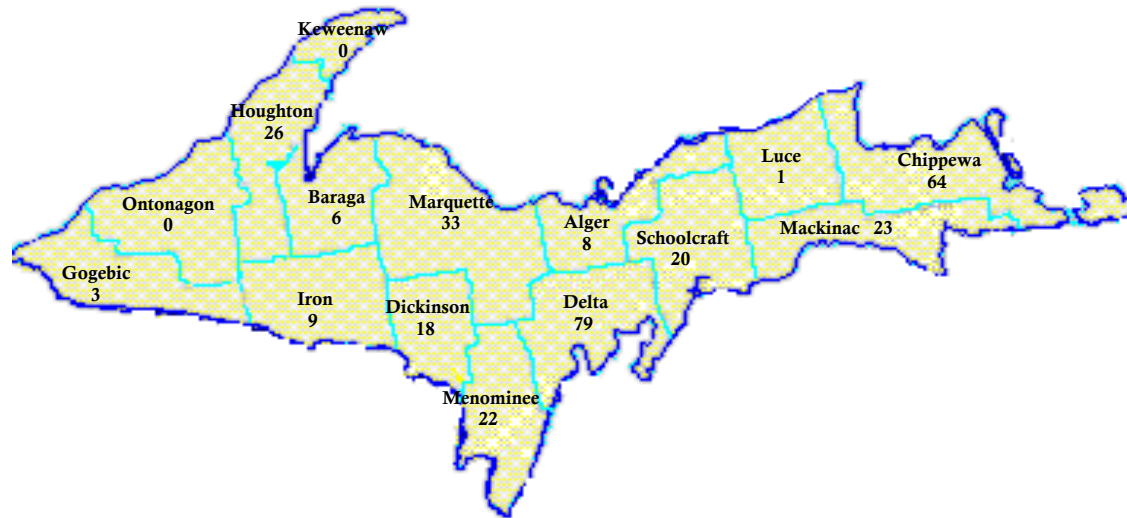
Grand Valley	53.9%
Saginaw Valley	41.0%
Oakland	39.7%
Ferris	38.3%
U of M-Flint	26.2%
Northern	20.4%
U of M-Ann Arbor	13.1%
U of M-Dearborn	13.0%
Wayne State	12.7%
Central	12.6%
Michigan State	11.9%
Michigan Tech	8.9%
Eastern	-1.0%
Western	-4.4%
Lake Superior	-17.5%

Fall 2000-2010  
FYE  
Source: HEIDI





# Geographic Origin



## Geographic Origin Fall Semester 2010

Southwestern	13,624
Southeastern	7,796
Northern Lower	1,649
Upper Peninsula	312
Michigan Residents	23,381
Other States	827
Other Countries	333
Total	24,541





# First-time Student Annual Tuition

## First-time Student Annual Tuition

Michigan Tech	\$12,023
U of M-Ann Arbor	\$11,837
Michigan State	\$11,205
Central	\$10,380
Ferris	\$9,930
U of M-Dearborn	\$9,455
Western	\$9,306
Oakland	\$9,285
Grand Valley	\$9,088
Wayne State	\$9,025
Lake Superior	\$8,889
Eastern	\$8,677
U of M-Flint	\$8,601
Northern	\$7,897
Saginaw Valley	\$7,308

## 10-year Tuition Change

Central	175.0%
Michigan Tech	141.9%
Ferris	131.8%
Eastern	129.7%
Wayne State	127.3%
Western	127.3%
Oakland	126.7%
Lake Superior	121.4%
U of M-Flint	119.6%
Michigan State	115.1%
Grand Valley	112.7%
U of M-Dearborn	110.5%
Saginaw Valley	102.5%
Northern	97.2%
U of M-Ann Arbor	81.8%

Source: HEIDI



# Financial Aid Available to GVSU Students



## Types of Financial Aid Available

Need-Based Grants	\$41,090,115
Merit Scholarships	\$21,680,993
Loans	\$166,395,374
Work Study	\$1,282,000

**TOTAL** **\$230,448,482**

Source: HEIDI and GVSU Financial Aid Office

## Institutional Financial Aid Commitment

	Amount	Increase
2006-07	\$19,196,886	22.8%
2007-08	\$22,026,439	14.7%
2008-09	\$22,528,075	2.3%
2009-10	\$24,545,728	9.0%
2010-11	\$26,096,965	6.3%

Source: HEIDI and GVSU Financial Aid Office



# Net Cost of Tuition for Typical GVSU Student



Tuition (2010-2011)	\$9,088
Average Gift Aid	\$3,566
<b>Average Net Cost</b>	<b>\$5,522</b>

Source: GVSU Financial Aid Office estimate



# Diversity

**Grand Valley strives for a diverse student body and campus community which is essential to the success of the university and its graduates.**





# Students of Color

	Percent	Total
Wayne State University	36.4%	11,573
University of Michigan-Ann Arbor	21.5%	8,971
Michigan State University	16.0%	7,523
Eastern Michigan University	24.5%	5,601
Central Michigan University	15.4%	4,207
Western Michigan University	12.9%	3,174
Grand Valley State University	11.5%	2,808
Oakland University	14.0%	2,652
University of Michigan-Dearborn	19.2%	1,612
Ferris State University	11.2%	1,555
University of Michigan-Flint	18.6%	1,449
Saginaw Valley State University	11.5%	1,210
Northern Michigan University	6.1%	577
Michigan Technological University	4.6%	331
Lake Superior State University	10.9%	281



Source: IPEDS  
Fall 2009



# International Education

Grand Valley consistently ranks among the top 10 universities of its size for the number of students who study abroad.



Source: Padnos International Center, Institute of International Education



Grand Valley has 25 international partnerships, including new programs developed in Chile, Romania, India and China.



# Female Enrollment

	Percent	Total
Michigan State University	53.3%	25,085
University of Michigan-Ann Arbor	47.6%	19,844
Wayne State University	58.9%	18,734
Central Michigan University	57.7%	15,730
Grand Valley State University	60.0%	14,656
Eastern Michigan University	58.6%	13,422
Western Michigan University	51.1%	12,548
Oakland University	62.0%	11,734
Ferris State University	50.1%	6,948
Saginaw Valley State University	60.0%	6,296
Northern Michigan University	53.1%	5,005
University of Michigan-Flint	62.2%	4,831
University of Michigan-Dearborn	51.2%	4,292
Michigan Technological University	24.8%	1,772
Lake Superior State University	51.5%	1,332



Source: IPEDS  
Fall 2009





# Partnership with the State

**Grand Valley needs a predictable, dependable and sustainable relationship with state government.**





# State Appropriations Per Student

	2005-06	2006-07	2007-08	2008-09
Wayne State	8,507	8,510	8,875	9,142
U of M-Ann Arbor	7,901	7,938	7,871	7,906
Michigan Tech	7,841	8,073	7,838	7,520
Michigan State	6,687	6,683	6,702	6,636
<b>State Average</b>	<b>5,612</b>	<b>5,673</b>	<b>5,719</b>	<b>5,704</b>
Northern	5,267	5,340	5,478	5,540
Lake Superior	4,883	5,410	5,538	5,491
Western	4,710	4,979	5,098	5,090
Eastern	4,055	4,177	4,322	4,466
Ferris	4,396	4,437	4,365	4,306
U of M-Dearborn	3,963	4,151	4,159	4,054
Central	3,710	3,793	3,876	3,844
U of M-Flint	4,090	4,021	3,885	3,660
Oakland	3,558	3,511	3,492	3,480
Saginaw Valley	3,534	3,564	3,543	3,477
Grand Valley	3,059	3,020	3,026	2,962

Source: HEIDI  
Note: No lag in FYEs



# State Appropriation Per Degree

	Degrees & Certificates Awarded 2008-2009	State Appropriation 2008-2009	Appropriation per Degree/Certificate	Rank
Wayne State	5,801	\$221,237,000	\$38,138	1
Michigan Tech.	1,378	\$49,518,500	\$35,935	2
Northern	1,615	\$46,633,200	\$28,875	3
U of Ann Arbor	11,603	\$326,674,300	\$28,154	4
Michigan State	10,736	\$293,041,200	\$27,295	5
Lake Superior	547	\$13,111,700	\$23,970	6
Western	5,444	\$113,243,200	\$20,801	7
Saginaw Valley	1,603	\$28,639,800	\$17,866	8
Eastern	4,458	\$78,551,800	\$17,620	9
U of M-Flint	1,246	\$21,593,700	\$17,330	10
Central	4,928	\$82,760,500	\$16,794	11
Oakland	3,511	\$52,452,200	\$14,939	12
Ferris	3,443	\$50,228,100	\$14,588	13
U of M-Dearborn	1,899	\$25,548,000	\$13,453	14
Grand Valley	4,761	\$64,021,400	\$13,447	15

Source: HEIDI and IPEDS



# Michigan Higher Education Funding Ranked by State



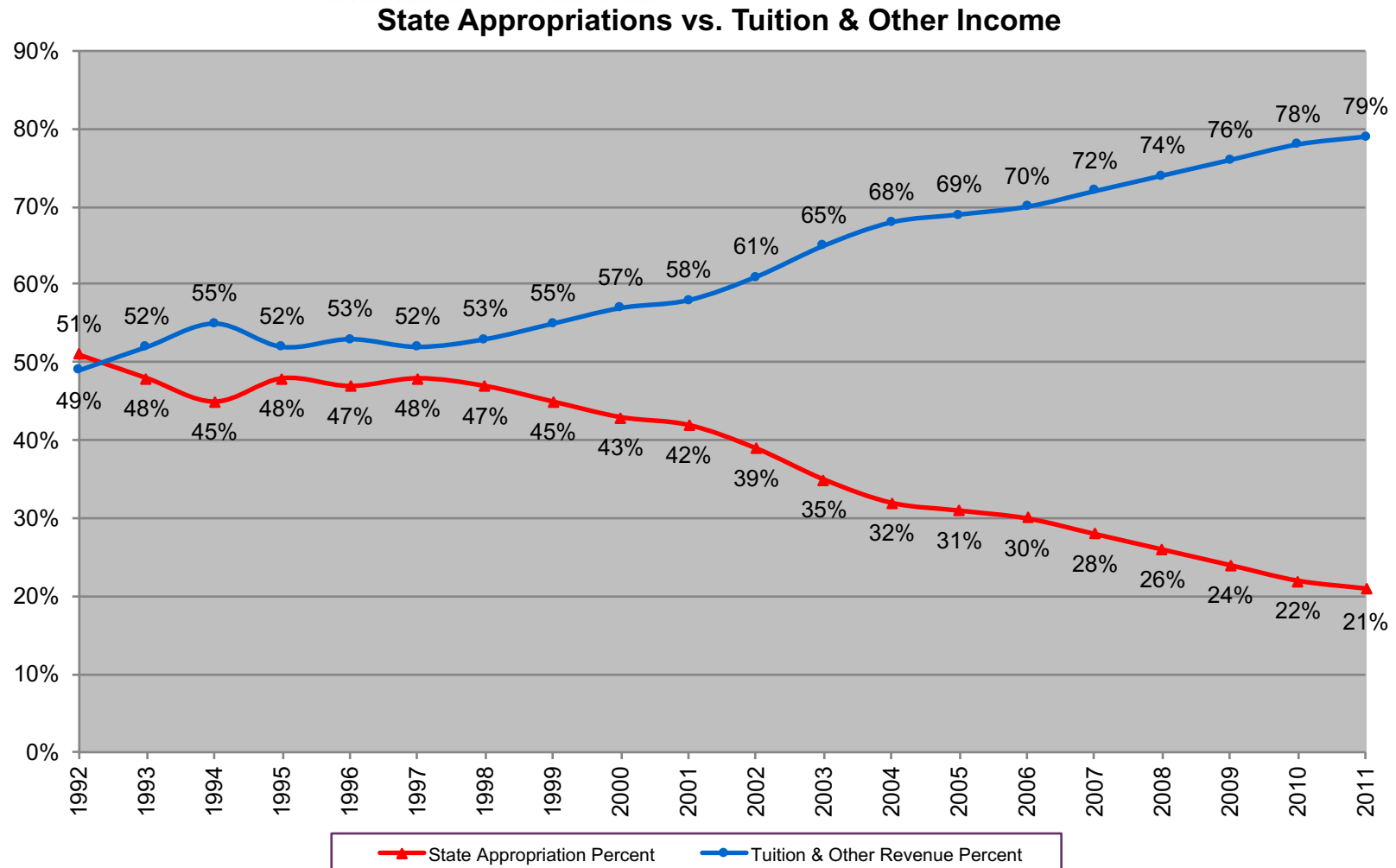
FY 2009 Michigan state appropriations per student  
National Rank = 41  
Five year change = -13.0%

Source: State Higher Education Executive Officers





# Ratio of State Aid vs. Tuition at Grand Valley



Source: HEIDI



# Appropriation and Tuition Per Student



	<b>2006-07</b>	<b>2007-08</b>	<b>2008-09</b>	<b>2009-10</b>
U of M-Ann Arbor	\$17,867	\$18,525	\$19,137	\$19,364
Michigan Tech	\$17,087	\$17,834	\$19,003	\$19,000
Michigan State	\$15,706	\$16,399	\$17,208	\$17,488
Wayne State	\$15,501	\$16,329	\$16,792	\$17,282
Central	\$11,309	\$12,917	\$13,595	\$13,958
Lake Superior	\$11,700	\$12,415	\$13,615	\$13,777
Ferris	\$11,865	\$12,955	\$13,529	\$13,748
Western	\$11,789	\$12,374	\$13,309	\$13,666
U of M-Dearborn	\$11,442	\$12,060	\$12,744	\$13,162
Northern	\$11,728	\$12,307	\$12,740	\$13,036
Eastern	\$10,997	\$11,714	\$12,665	\$12,898
Oakland	\$10,352	\$11,220	\$11,640	\$12,191
U of M-Flint	\$11,183	\$11,526	\$11,880	\$12,071
Grand Valley	\$9,815	\$10,412	\$11,284	\$11,590
Saginaw Valley	\$9,210	\$9,902	\$10,130	\$10,362

State Appropriations Per Student (Two Year Lag) + FTIAC Resident Tuition  
Source: HEIDI



# State-Funded Instructional Space

## Square feet per student

	2005-06	2006-07	2007-08	2008-09
U of M-Ann Arbor	360	349	342	352
Lake Superior	312	342	341	341
Michigan State	324	320	320	314
Michigan Tech	356	362	319	310
Wayne State	274	266	271	278
U of M-Dearborn	199	210	209	263
Northern	239	239	236	246
<b>State Average</b>	<b>244</b>	<b>244</b>	<b>240</b>	<b>242</b>
Western	258	275	241	238
U of M-Flint	270	262	242	227
Eastern	156	168	173	177
Saginaw Valley	169	171	168	163
Central	144	161	163	160
Ferris	157	157	153	149
Grand Valley	116	113	115	126
Oakland	110	107	106	104

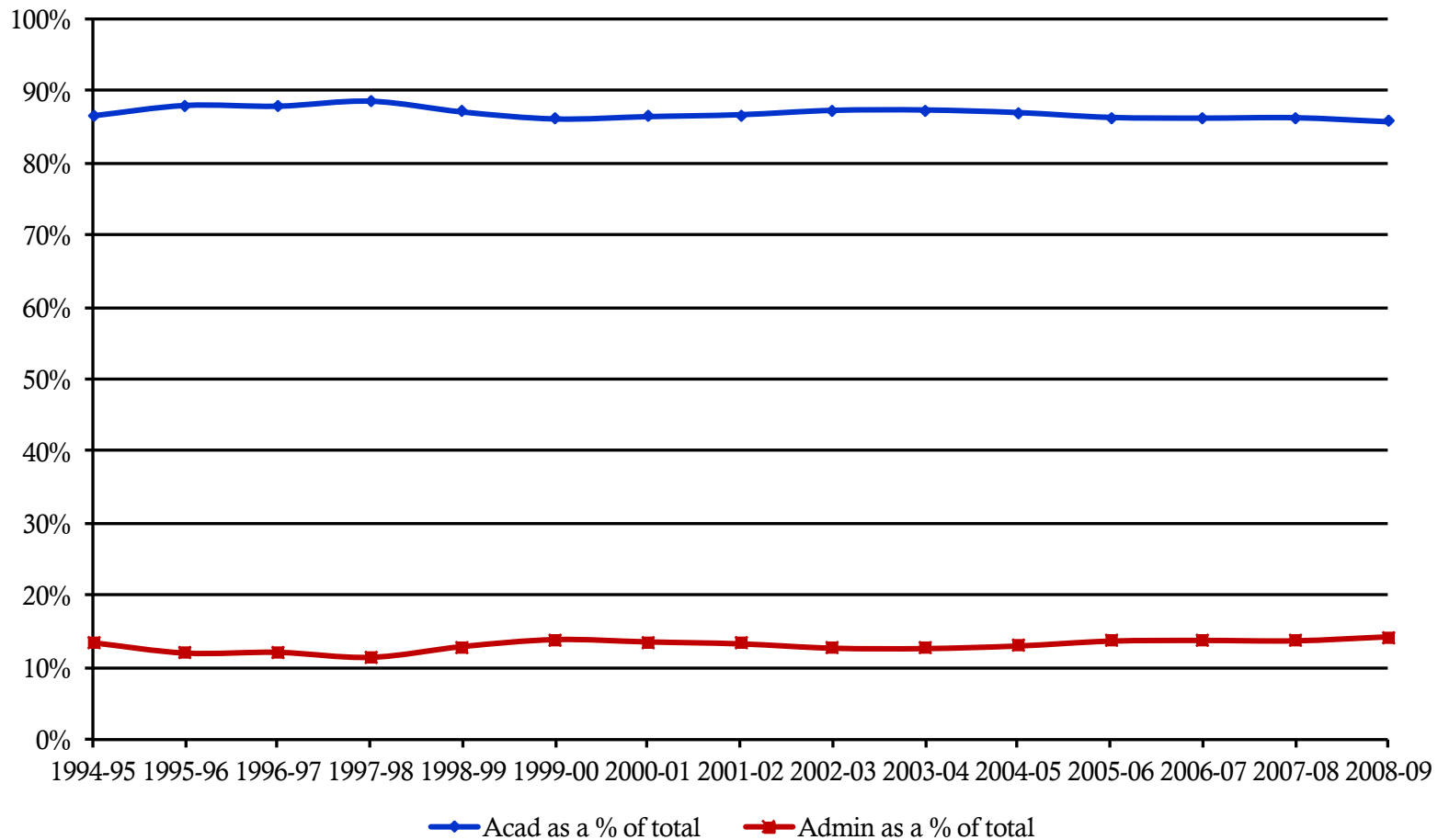


# Efficiency Measures

**Grand Valley is a careful steward of the funds it receives and the resources it uses.**



# Academic vs. Administrative Expense As a Percent of Total Expense



Source: HEIDI



# Average Number of Students per Faculty



Wayne State	11.0
Michigan State	11.8
Lake Superior	13.2
Michigan Tech	13.6
Western	14.0
U of M-Ann Arbor	14.0
Ferris	15.6
U of M-Dearborn	16.1
U of M-Flint	16.2
Central	16.8
Eastern	18.0
Grand Valley	18.7
Saginaw Valley	19.6
Oakland	19.9
Northern	20.3



# Environmental Sustainability

Grand Valley is a nationally recognized leader for its commitment to sustainability.

- Nearly 20 percent of Grand Valley's total building square footage has been built to LEED standards. This is the certification through the U.S. Building Council's Leadership in Energy and Environmental Design program.

**LEED Gold:**

Laker Turf Building, Michigan Alternative Renewable Energy Center

**LEED Silver:**

Bicycle Factory interior, Frederik Meijer Honors College/Hall addition, Green House on Watson Street (School of Engineering project)

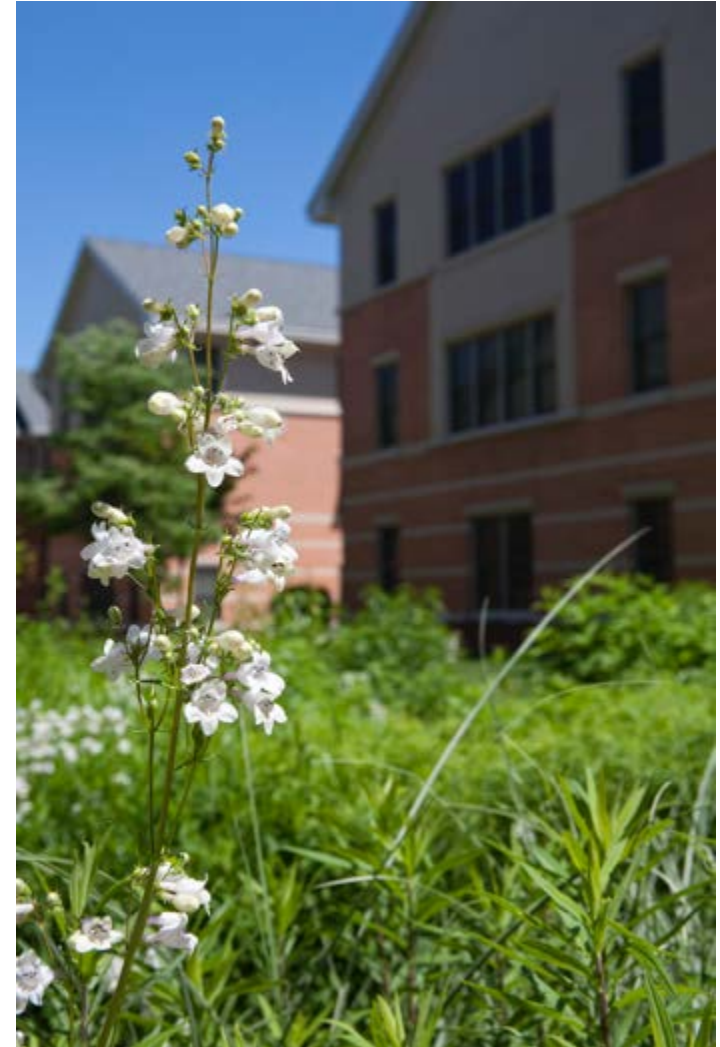
**LEED Certified:**

John C. Kennedy Hall of Engineering, Kirkhof Center addition, Mackinac Hall first floor renovation

**LEED Registered:**

The Connection, Living-Learning Center, Mary Idema Pew Library Learning and Information Commons

- President Thomas J. Haas was named one of 16 “green leaders in Michigan” by the *Detroit Free Press*.
- Grand Valley received the highest green rating among Michigan colleges and universities by a report from the Princeton Review.
- The “Peterson's Guide to Green Jobs” listed Grand Valley among the top 50 schools in the country with outstanding sustainability programs on campus.



# Bus Partnership Saves Students \$29 million annually



Year	Riders	Miles saved	Saved auto operating costs	Gallons of gas saved	Saved fuel costs
2005-2006	684,746	8,901,698	\$3,597,227	445,085	\$1,268,492
2006-2007	1,651,816	21,473,608	\$8,696,811	1,073,680	\$3,059,989
2007-2008	1,977,339	25,705,407	\$11,567,433	1,285,270	\$4,048,602
2008-2009	2,412,724	31,365,416	\$18,191,941	1,568,271	\$8,067,750
2009-2010	2,605,897	32,662,695	\$18,944,363	1,633,135	\$10,438,065

Source: Pew Campus Operations



# Private-Public Partnership

**Grand Valley must be a productive recipient of grants and gifts and enrich the community, the region and the world in return.**





# Private Giving to Grand Valley

## Overall Private Giving

### Overall Private Giving for Fiscal 2010

This fiscal year was a very successful year for private giving at Grand Valley. A record number of individuals and organizations supported Grand Valley this year with more than 8,900 giving to the university and more than 14,500 giving to WGVU for a total of more than 23,500 friends and supporters. Cash gifts and pledges received by Grand Valley State University and the Grand Valley University Foundation totaled \$25.7 million with additional commitments of \$2.7 million for a total of \$28.4 million as our volunteers continued to rally support for the *Shaping Our Future* campaign. Gifts and pledges to WGVU were \$1.8 million of the total.\*

\*For the full audited financial statement for Grand Valley State University, go to [www.gvsu.edu/busfin](http://www.gvsu.edu/busfin) under "Financial Reports." Additional information about the Grand Valley University Foundation is available at [www.gvfound.org/](http://www.gvfound.org/).



Source: University Development, FRR, which includes outright gifts, pledges, bequests, and commitments.

Source: University Development



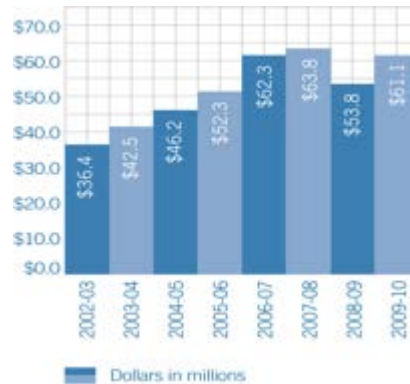


# Giving Highlights

## Endowment Performance

This year Grand Valley's endowment fund rebounded to \$61.1 million through a combination of private donor generosity and careful financial management.

Endowment Fund Growth



## Grand Valley Fund

Unrestricted giving to the Grand Valley Fund increased 5.2 percent over last year, with current gifts and pledges of more than \$400,000. The fund continues to provide support for university priorities that directly serve students.

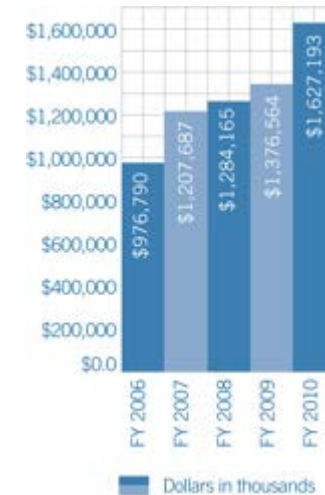
*Highlights of the ways the Grand Valley Fund supported students for 2009-2010 include:*

- Increase in students receiving need-based scholarships and grants
- Increase in number of free tutoring hours provided to students
- Increase in number of job opportunities posted for students through career services

## Annual Giving

Overall annual giving to the university from all constituents exceeded the annual goal again this year with an 18 percent increase over the prior year.

Annual Giving



## Other Giving Highlights

- Alumni giving increased 22 percent over the prior year with more than 5,000 alumni giving to the university through annual gifts alone.
- Corporate and foundation giving significantly exceeded the goal for this year and contributed to progress on both the Pew Library and Seidman building projects.
- Faculty and staff giving hit a new record this year with an increase in donors to more than 50 percent. Grand Valley has one of the highest faculty and staff giving rates among the state's public universities.
- Giving from parents and families of students also increased this year, with more than 2,100 families giving to the university.

Source: University Development



# Shaping Our Future Comprehensive Campaign



Originally, the campaign goal was set at \$50 million and included the Mary Idema Pew Library Learning and Information Commons. That goal was expanded to \$75 million by the opportunity to honor L. William Seidman with the addition of a dedicated building for the business college at the Robert C. Pew Grand Rapids Campus. The campaign is on track to meet the new goal, but still needs private gifts to support these two capital projects.

## *Shaping Our Future* campaign update

Grand Valley's first comprehensive campaign, *Shaping Our Future*, was launched three years ago. Fittingly, its conclusion will coincide with the end of the university's 50<sup>th</sup> anniversary celebration in June 2011. This campaign supports:

- Scholarships
- Endowments
- Academic programs
- Capital projects



# Economic Development

**Grand Valley is an economic engine, creating jobs and an atmosphere of vibrancy.**





# Income Tax Remittances by GVSU Employees



Year	Grand Rapids	Muskegon	Walker	Michigan
2005	\$407,188	\$12,698	\$44,120	\$3,975,229
2006	\$426,650	\$13,164	\$45,878	\$4,244,534
2007	\$488,948	\$13,006	\$48,071	\$4,623,799
2008	\$584,651	\$12,544	\$48,697	\$5,339,732
2009	\$631,297	\$13,256	\$52,020	\$5,712,956





# Economic Impact in Region



**\$643.9 million**

Economic impact of GVSU's 27,400 students, faculty and staff in Kent, Ottawa, and Muskegon counties in fiscal year 2008-2009.

**10,111**

Total estimated employment attributed to GVSU

Source: University Budget Office using model provided by  
W.E. Upjohn Institute for Employment Research



# Economic Impact of Grand Valley Alumni

**Grand Valley alumni now number more than 75,000, with the majority living and working in Michigan**

**Top Employers of Grand Valley Alumni:**

Amway Corporation  
BDO Seidman  
Steelcase Corporation  
Spectrum Health  
Metro Health  
GE Aviation  
Crowe Howath LLP  
Gentex Corporation  
Auto Owners Insurance  
Target Corporation  
Goodwill Industries  
Gordon Food Service  
Hope Network  
Rockford Public Schools  
Allendale Public Schools



Source: Career Services



# Sponsored Projects and Research

*In fiscal year 2009, Grand Valley researchers engaged in 102 research projects worth \$19.3 million in grant funding. In fiscal 2010, there were 94 projects funded, worth some \$19.4 million to date. Projects include:*

- The National Institutes of Health, National Institute on Alcohol Abuse and Alcoholism, awarded a grant in the amount of \$185,954 to study the role of kappa opoid regulation in ethanol withdrawal and relapse.
- Michigan Commission on Law Enforcement Standards (MCOLES) continued funding through a \$177,387 grant to the West Michigan Criminal Justice Training Consortium to give law enforcement personnel additional professional training in emergency precision driving through access to driving tracks, providing for overtime costs to allow more officers to attend the training.
- Michigan Department of Education awarded a \$1,400,000 grant for the Statewide Autism Resources and Training Project (START) to provide training and technical assistance to educators in Michigan that serve students with Autism Spectrum Disorder (ASD).
- The National Science Foundation awarded a grant in the amount of \$228,314 to support the Grand Valley State University summer undergraduate research program in mathematics.
- The State of Michigan, Department of Natural Resources, awarded a grant of \$75,085 to investigate the reproductive and recruitment success of Walleye in the Muskegon River. Consumers Energy, through a subcontract from URS Inc., also funded a \$92,348 study on the recruitment and juvenile ecology of Lake Sturgeon in the Muskegon River. A \$225,000 Michigan Sea Grant also funded studies on the causes, consequences, and corrective actions required to minimize the adverse impacts of storm water discharges.
- U.S. Small Business Administration awarded grants of \$3,537,019 in FY 2010 to the Michigan Small Business and Technology Development Center (MI-SBTDC) to provide small business counseling, training, and market research. The State of Michigan, Michigan Economic Development Corporation, also awarded a \$2,800,000 grant to provide support for exceptional research and technical innovation generated in Michigan.

- National Endowment for the Humanities awarded a grant to the University Archives for the conduct a preservation assessment of the D. J. Angus collection. This project was designated by the Endowment as a "We the People" project. "We the People" projects are designed to encourage, strengthen the teaching, study, and understanding of our nation's history and culture.
- The Michigan Council for Humanities (\$15,000), Community Foundation of Muskegon County (\$5,000), and the Alcoa Howmet Foundation (\$5,000) all awarded grants in support of the development and production of the award winning documentary film "Up from the Bottoms."
- Arcus Foundation awarded a \$60,030 grant to the Lesbian, Gay, Bisexual, Transgender (LGBT) Resource Center at Grand Valley to support the position of assistant director.
- Nokomis Foundation awarded \$30,000 to the Women's Center in support of the Women's Community Collaborative, a service-learning initiative for female students to serve in nonprofits and gain practical field experience in the nonprofit sector.
- National Science Foundation (NSF) awarded a three-year, \$280,028 grant to the Annis Water Resources Institute to acquire and maintain an automated genetic analyzer and spectrophotometer for the use in DNA sequencing and genotyping.
- The Biology Department was awarded a \$130,513 subcontract from the National Oceanic and Atmospheric Administration (NOAA) University of Michigan Sea Grant to perform a wind energy facility assessment in West Michigan's coastal communities.

## American Recovery and Reinvestment Act (ARRA) grants

- National Science Foundation (NSF) awarded a \$699,997 grant to the School of Engineering to explore the development of a Science Masters Program in Biomedical Engineering.
- National Science Foundation (NSF) awarded a five-year \$502,600 grant to the Biology department to support collaborative research studying the effects of global warming on tundra vegetation in northern Alaska.
- The U. S. Department of Health & Human Services, Health Resources and Services Administration, awarded a \$300,000 equipment grant to enhance the training of health professionals.



# SmartZones



*Grand Valley is home to two SmartZones — the West Michigan Science and Technology Initiative in Grand Rapids and the Michigan Alternative and Renewable Energy Center in Muskegon. Recent developments include:*

WMSTI has served more than 400 clients working to commercialize products in the life sciences, as well as other high-tech, high-growth areas. Many events were held allowing clients to connect and then collaborate regionally.

WMSTI continues to operate two incubators for the community, both able to serve all needs of the life sciences but particularly focused on diagnostics and medical devices. Companies continue to graduate and enter as their commercialization strategy requires. The most recent entry is Syzygy BioTech Solutions which is developing a new polymerase allowing DNA to be replicated at a lower cost.

WMSTI has developed a mini-lab approach allowing four companies to share one laboratory, significantly reducing the cost of startup for the company.

WMSTI provided major assistance to the events that helped launch Grand Valley's Center for Entrepreneurship and Innovation.

EarthTronics Inc., MAREC's largest incubator success story to date, moved into its own Muskegon-based headquarters in the Hines Building located in downtown Muskegon in July of 2009. The company focuses on energy efficient lighting, high efficiency light fixtures and electronic ballast. While at MAREC, it developed a line of Earth Bulb products and the revolutionary Honeywell WindTurbine which features gearless turbine technology and is scheduled for commercial/retail sales in October of 2010.

Since opening in 2003, MAREC has seen six incubator tenants move through its facility. The facility presently houses four incubator companies including Smart Vision Lights, Logical Lighting, Energy Partners LLC, and McKenzie Bay - the most recent addition and a developer of energy efficiency and renewable energy products and technology.

MAREC is working in partnership with MI-SBTDC to develop an active incubator environment designed to attract entrepreneurs, provide business acceleration opportunities and offer business consultation as well as start-up finance guidance.

MAREC is actively involved with state and regional partners in exploring large-scale commercial wind development opportunities for the Muskegon and lakeshore region. Muskegon Port development in support of renewable energy manufacturing represents an economic development opportunity for the region.

MAREC recently secured both federal and state grants to support an offshore wind assessment research project on the Great Lakes that is being developed in partnership with the University of Michigan Phoenix Michigan Memorial Energy Institute.





# Value of Grand Valley Construction in 2010



## 2010 Projects

Ottawa County:	\$29,828,027
Kent County:	\$2,779,440
Muskegon County:	\$299,000
<b>Total:</b>	<b>\$32,906,467</b>

More than 700 jobs were created for the construction of these projects

Source: Facilities Planning



# 50 Years of Shaping Lives

