



Fishbeck, Thompson, Carr & Huber
Engineers • Scientists • Architects

Grand Rapids, Michigan (616) 575-3824

© Copyright 2003 All Rights Reserved



CLIENT
LOCATION

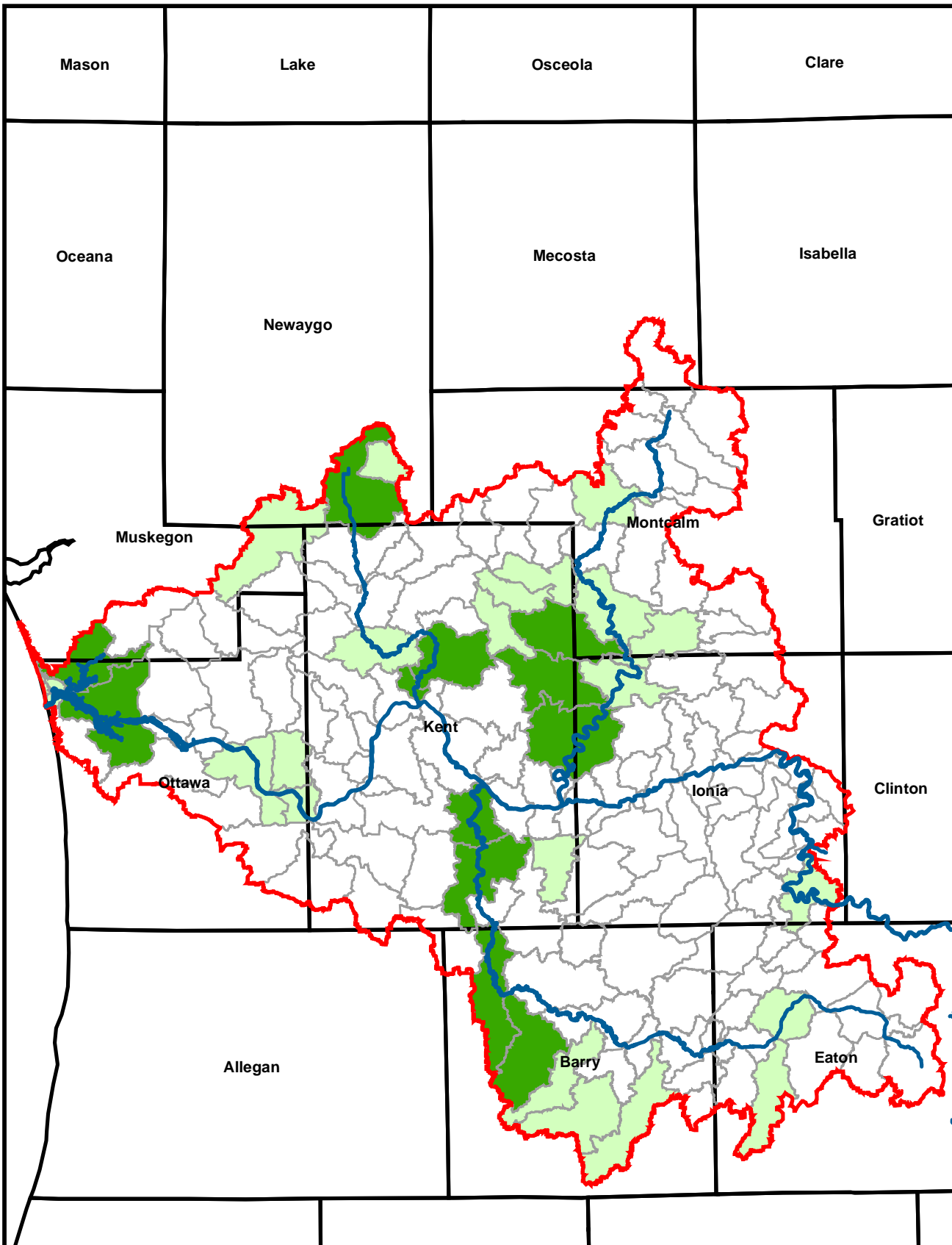
PROJECT
PROJECT

PROJECT NO.
XXXXXX

FIGURE NO.

1

PLOT INFO: D:\WORK\02408\MAP_DOCUMENT\NFI.MXD DATE: 2/27/2004 USER: MCL



Legend

MAJOR WATERCOURSES

Igrw_boundary

NFI

5 TO 9 LISTED ENDANGERED, THREATENED OR SPECIAL CONCERN SPECIES

10 OR MORE LISTED ENDANGERED, THREATENED OR SPECIAL CONCERN SPECIES

Cass

St.

NATURAL FEATURES INVENTORY