

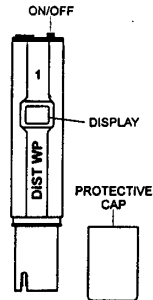
Conductivity (pen)

1. Collect water sample from back deck using Conductivity bottles for **Top** and **Bottom**.

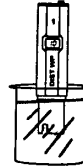
2. Use sample water in bottles to fill the three sample cups for both **Top** and **Bottom**.



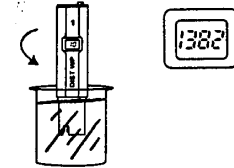
3. Remove the protective cap and turn on the Conductivity pen.



4. Immerse Conductivity pen in water sample up to the first groove.

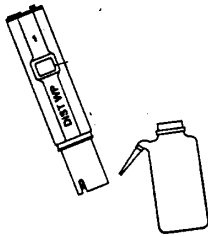


5. Stir the probe gently in the sample and wait until the display numbers stop changing.



6. Record Conductivity value on your data sheet.

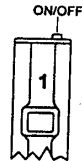
7. Pull pen out of sample and rinse tip with DI water.



8. Dry the end of the Conductivity pen and repeat steps 4-7 with other water samples.

9. After final rinse and dry, put protective back on the Conductivity pen.

10. Turn off the pen.



11. **CLEAN – UPI** Pour water samples down the drain.

12. Rinse bottles and cups with tap water and put back at Conductivity station.

13. Wipe up any water spills with the sponge.