

INTEGRATED ASSESSMENT

Alternative Stormwater Management Practices
that Address the Environmental, Social, and
Economic Aspects of Water Resources in
Spring Lake Township and Village



Elaine Sterrett Isely
Alan D. Steinman

Annis Water Resources Institute
Grand Valley State University

Why do we care about stormwater?



Photo credit: D. O'Keefe

➤ Stormwater discharges are generated by runoff from land and impervious areas during rainfall and snow events.

- Paved streets
- Parking lots
- Building rooftops



Photo credit: A. Steinman

➤ These discharges often contain pollutants in quantities that could adversely affect water quality

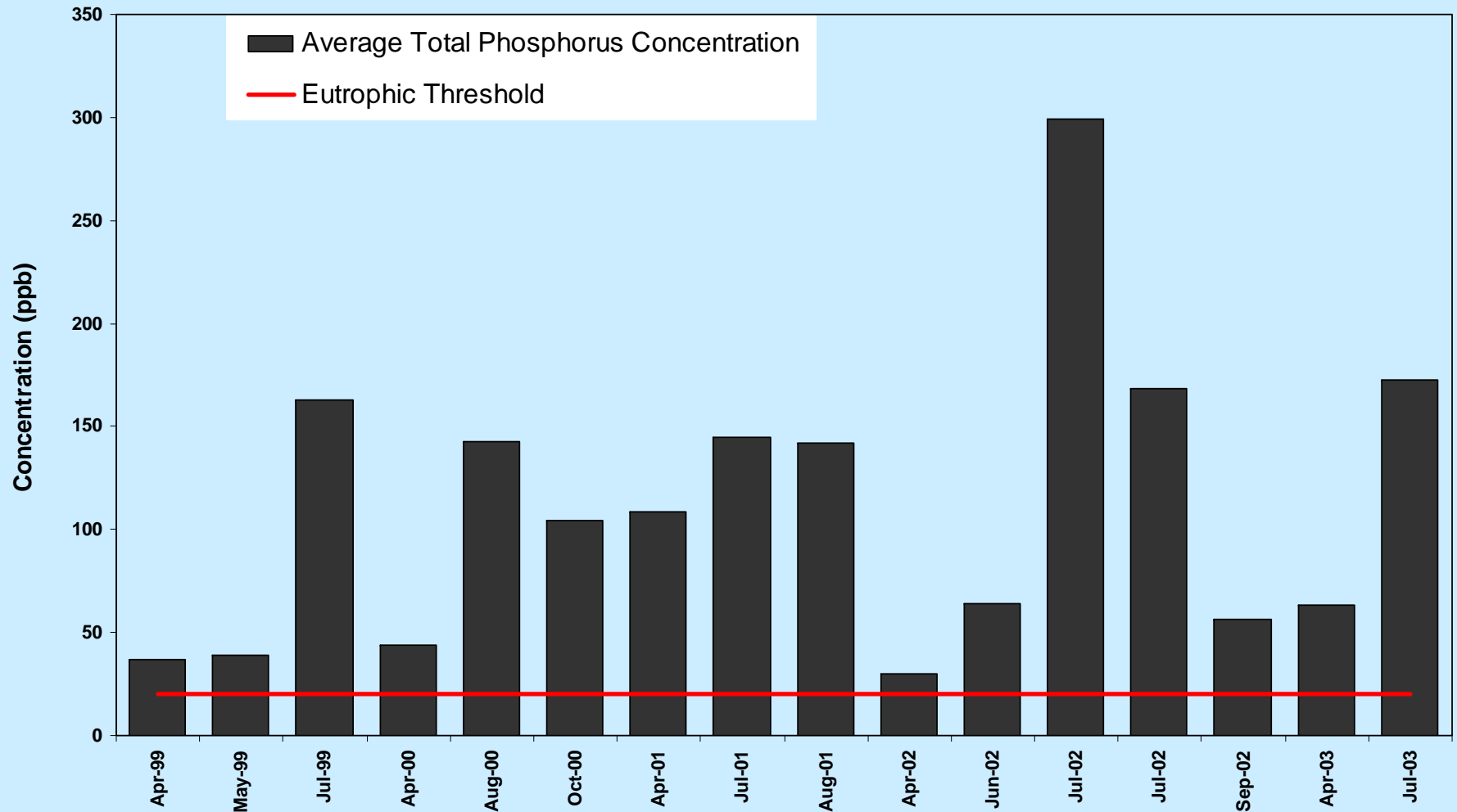
- Excess fertilizers, herbicides, and insecticides from agricultural lands and residential areas
- Oil, grease, and toxic chemicals from urban runoff
- Sediment from improperly managed construction sites, crop and forest lands, and eroding streambanks
- Salt from road-deicing and irrigation practices
- Bacteria and nutrients from livestock, pet wastes, and faulty septic systems

➤ Primary method to control stormwater discharges is the use of best management practices



Photo credit: N. DeMol

Total Phosphorus: Spring Lake



Nutrient Impacts

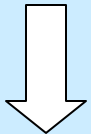
Too many nutrients



Algal blooms



Reduced dissolved oxygen in water



Fish kills

Taste & odor problems

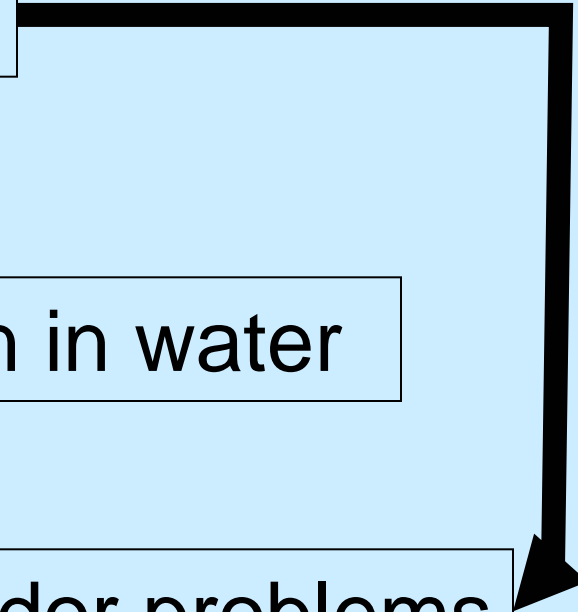




Photo Credit: Spring Lake Lake Board

Alum Treatment



Photo credit: Annis Water Resources Institute

➤ Reduced release of phosphorus from sediments

➤ Reduced total phosphorus levels in water column

➤ No effect on algal biomass

➤ Did not address new nutrient and other stormwater inputs



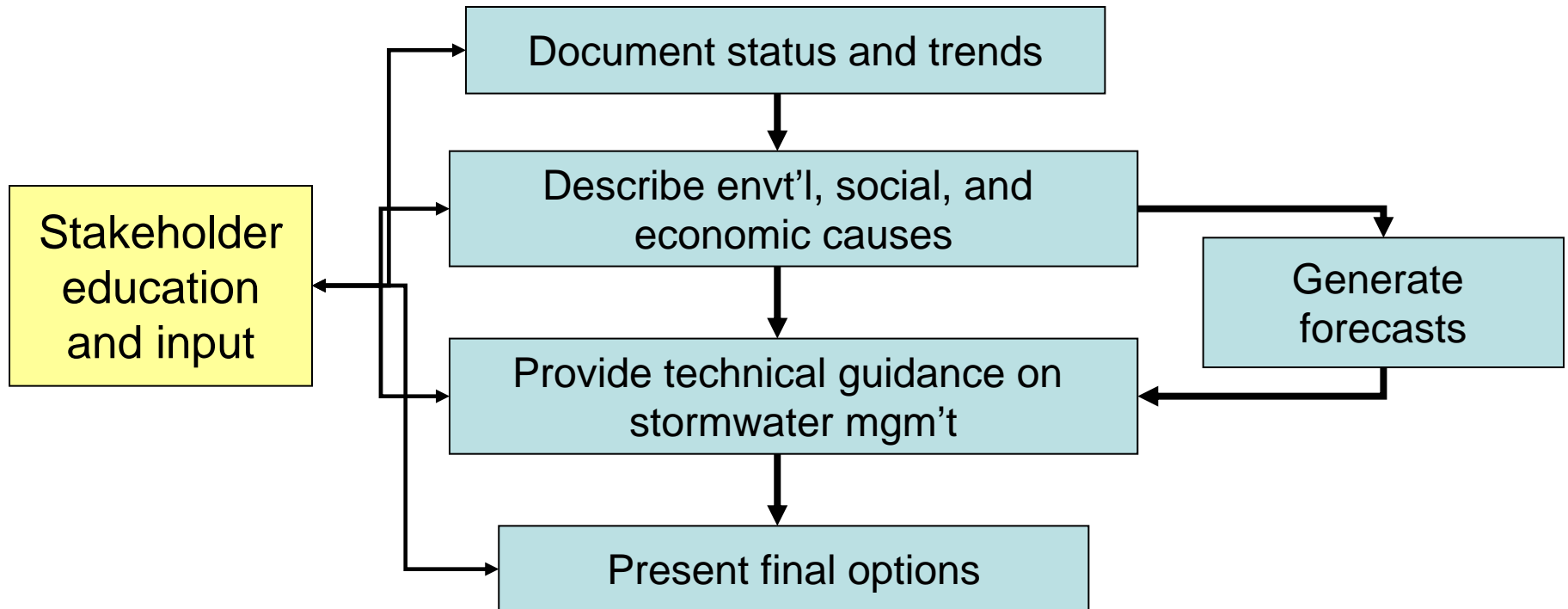
Photo credit: Progressive AE

Steinman, A.D. and M. Ogdahl 2008. Ecological effects following an alum treatment in Spring Lake, Michigan. *Journal of Environmental Quality* 37(1): xxx-xxx.

Project Objectives

- ❖ Increase understanding of the causes and consequences of stormwater runoff
- ❖ Increase stakeholder participation in stormwater control and management
- ❖ Identify regulatory mechanisms to improve local stormwater management and control
- ❖ Provide alternative BMPs for stormwater mgm't

Planned Activities



Contact: iselyel@gvsu.edu or steinmaa@gvsu.edu