

Studies to Support Ruddiman Creek Implementation-Ready TMDL

It's time for Ruddiman Creek to be put on a diet!

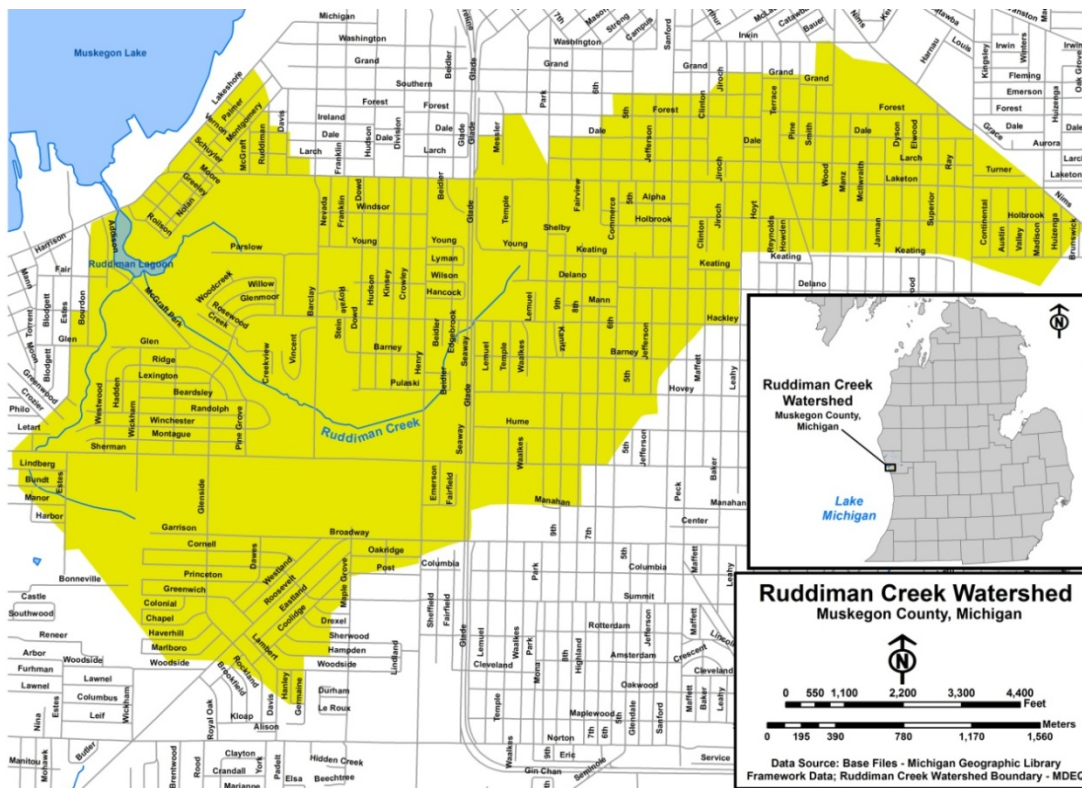
We all know what happens to our bodies when we eat more twinkies that we should—the response is weight gain and too much fat. Well, when lakes and streams get more pollutants than normal, they also experience a negative effect—they become impaired. In the case of Ruddiman Creek, too much water during storm events causes erosion and sediment movement, harming the fish and invertebrates. The reason Ruddiman Creek gets too much water is because of all the hardened surfaces (roads, roof tops, parking lots)—the stormwater runs off into the Creek instead of percolating through the soils.

Total Maximum Daily Load (TMDL): the “diet plan”

To lose our excess weight, we usually go on a diet and start exercising. It's the same for streams: we put impaired streams on a “diet” by reducing pollutants. This is done through the “TMDL process”, which is overseen by the US EPA. To get the stream healthy, we identify how much the pollutant must be reduced to meet water quality standards.

Goals:

The ultimate goal of this project is to get Ruddiman Creek healthy. To do that, we will work with **the public** to provide the scientific data to the Michigan Department of Environmental Quality so they can identify restoration targets for flow and sediment. Solutions to meet those targets will be determined by working with the public stakeholders.



How can I participate in the decision-making process?

Public participation is a crucial part of the TMDL process. Meetings are held to exchange ideas on pollutant limits and solutions to meet those limits, including thoughts on possible best management practices (BMPs). For information to participate in the meetings, or for more information on the project, **please contact us**.

Project Contacts:

Sara Damm (Project Manager): damsa@gvsu.edu (616) 331-8788
Dr. Alan Steinman (Principal Investigator): steinmaa@gvsu.edu
Kathy Evans (Outreach Coordinator): kevans@wmsrdc.org

Project website: <http://www.gvsu.edu/wri/director/ruddiman>

