



SPECTRUM HEALTH

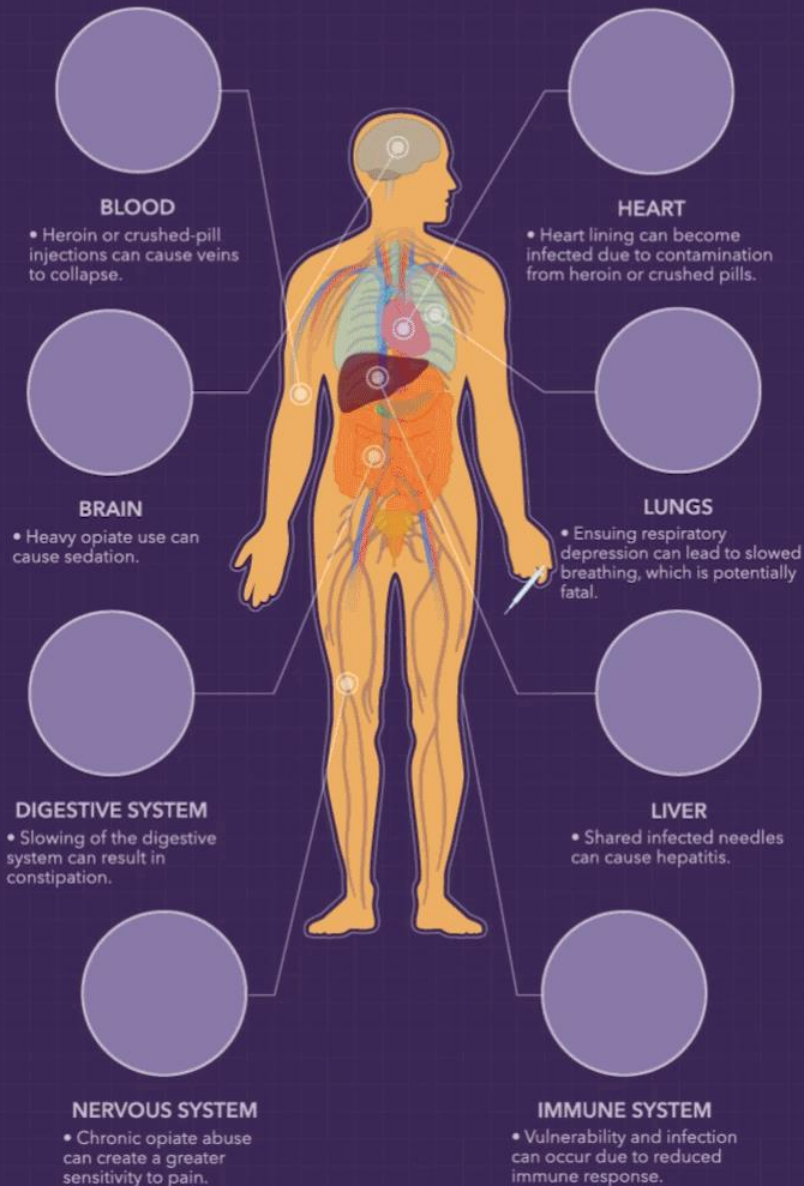
The Medical Group

Opioid Crisis and Response:

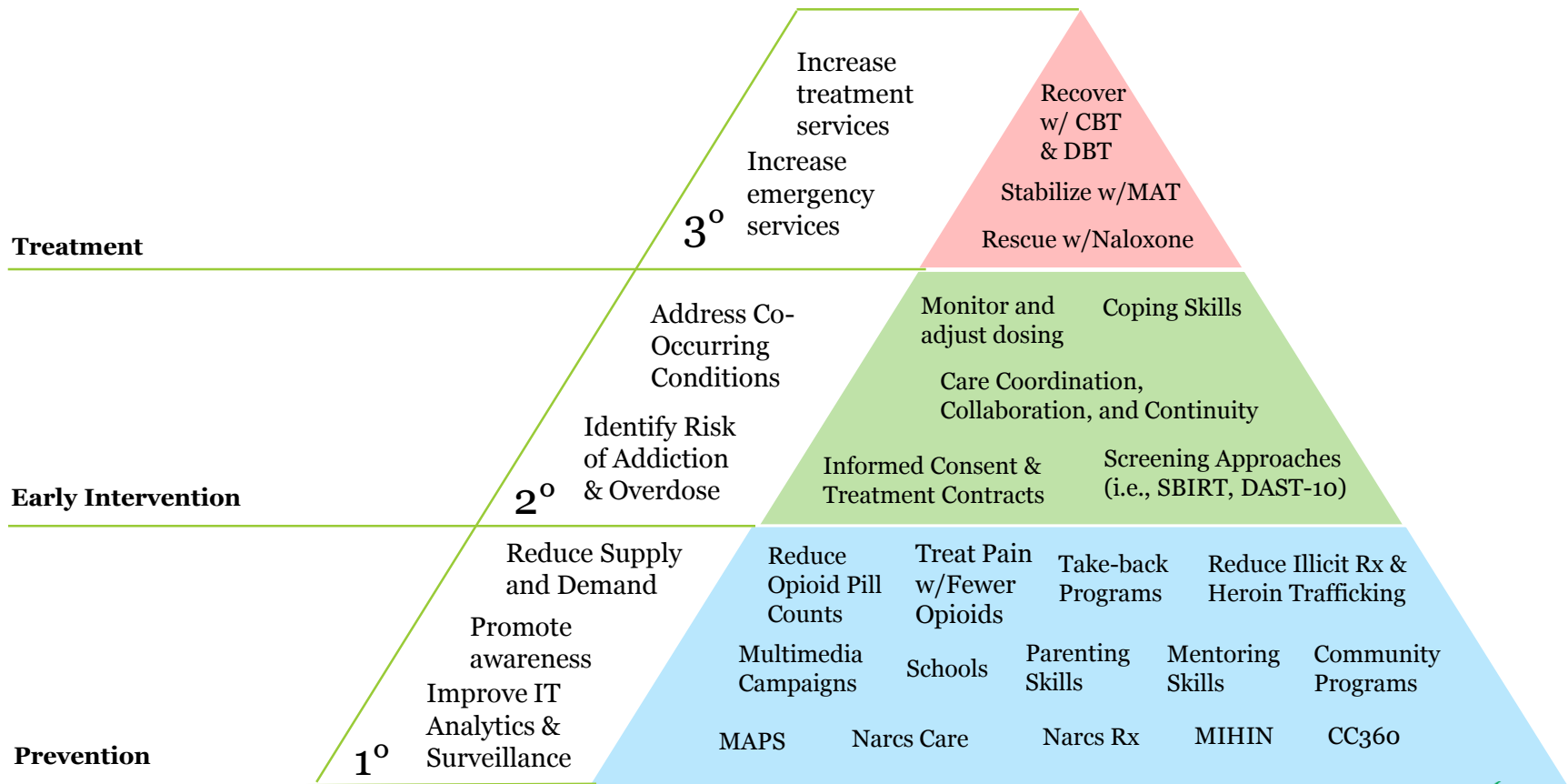
Medical Complications, Treatment and Resources

Cara Anne Poland, MD, M.Ed, FACP, FASAM
Spectrum Health Physician
Assistant Professor MSU
President, Michigan Society of Addiction Medicine

THE EFFECTS OF OPIATES ON YOUR BODY



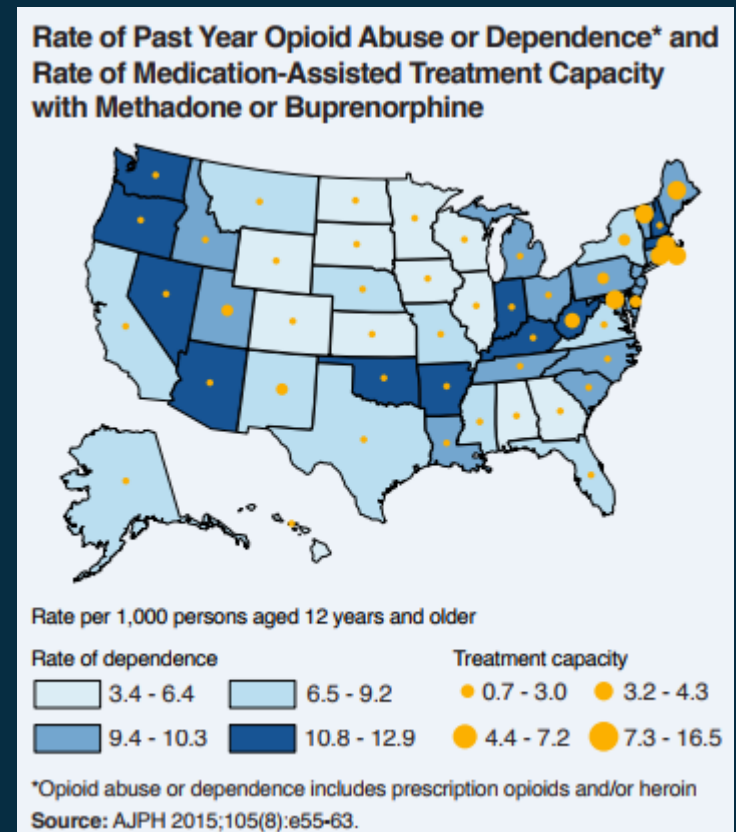
MDHHS Public Health Approach to the Opioid Crisis



Treatment Gap

Michigan (2015):

- Rate: 9.4-10.3
- Treatment Capacity 0.7-3.0



Access Barriers

Not enough providers

Limited numbers = waiting
lists

Coverage limitations

Utilization management
processes

The biggest
obstacles in our
lives are the
barriers our
mind creates.

Treatment



Three FDA approved medications

Studies show that medications are clinically effective in reducing drug use and promoting recovery

FDA Approved MAT Opportunities

Generic	Name Brand	Condition Treated
Methadone	Dolophine, Methadose	Opioid
Buprenorphine/Naloxone	Suboxone / Zubsolv / Bunavail	Opioid
Naltrexone	Vivitrol	Opioid (Alcohol)

- FDA-approved medications treat the biological component of the disease by stabilizing the brain structures
- 30% of treatment programs currently offer medication
 - Less than 1/2 of eligible patients receive medications

Those receiving medications as part of their treatment are **75% less likely to die** because of addiction than those not receiving medications

Cost Analysis

1 yr methadone = \$4,700 versus 1 yr
incarceration = \$18,400

Every \$1 invested in addiction saves \$4-7 in
drug-related criminal activity

When including healthcare costs, savings
exceed a 12:1 ratio

Naloxone Standing Order

Allows for Naloxone to be dispensed by a pharmacist without identifying a particular patient

In May 2017, the standing order became available

1,525 (53.8% of all pharmacies in Michigan)
pharmacies enrolled with 1,254 reporting
quarterly numbers

Total number of Naloxone orders dispensed Oct. 1
– Dec 31 = 1,588 (548 under MDHHS order)

Treatment Access

Medicaid Population: access most services through NW180
(other than non-methadone OBOT)

Non-Medicaid (including Medicare): access services by calling
the behavior health line on the back of their insurance cards

Community Resources

Spectrum Health

Integrated with primary care, pregnancy, within psychiatry

Pine Rest

Full continuum of inpatient and outpatient services

Arbor Circle

Various Recovery Houses

Website outlining Resources: <https://www.mirecovery.info/>

SH Opioid Crisis Program

Remove: decrease burden of opioids in the community,
improve safe prescribing practices

Revive: align with community efforts to increase naloxone
availability

Recovery: prevention, early intervention and treatment (MAT)

Community: align resources and strategies, provide outreach

Collaboration: between services both within traditional
healthcare, CMH and otherwise

Education: general community and healthcare community



To all the people who have lost their lives to addiction
and those that try to prevent further losses.



SPECTRUM HEALTH

The Medical Group