

# Vera KLEMENT

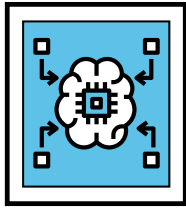
Thomas J and Marcia J. Haas Center for Performing Arts

March 4 - April 9, 2021

GVSU | **ART**  
GALLERY  
EXPLORE. DISCOVER. SHARE.



# KEY THEMES



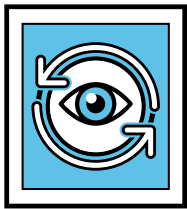
## MEMORY

Memory plays a pivotal role in Vera Klement's process. She does not paint on location or use figure models in her studio, instead she relies on memory to re-create places and objects. Ask students to consider how the objects and scenes in Klement's work trigger their memories. Discuss how images play an important part in memory.



## MOURNING

Vera Klement was profoundly influenced by her childhood experience of fleeing the Nazis, losing her homeland, and the immense tragedy of the Holocaust. And much like the physical act of mourning, her grief relative to this experience comes out both voluntarily and involuntarily. Use Klement's work to start a conversation about how we deal with loss and what forms mourning may take.



## SYMBOLISM

Artists often utilize symbolism in their work to purposefully communicate and guide viewers to an idea or belief. A vessel, a lifeboat, a forest; each of these objects hold significant symbolic meaning for Klement. Discuss the symbolic purposes of these objects and others in Klement's work and consider the possible meanings they communicate to viewers.

## MORE INFORMATION

You can find additional learning resources related to Vera Klement, her work, and more on [gvsu.edu/artgallery](http://gvsu.edu/artgallery) along with links to discussion prompts and other activities. The Art Gallery staff welcomes collaboration.

Connect with us to develop content for your classroom today.

Contact:  
Amanda Rainey  
UX/Learning Manager  
[raineyam@gvsu.edu](mailto:raineyam@gvsu.edu)

(front cover) Vera Klement, *Keel (detail)*, 1983, Oil, encaustic, earth on canvas, courtesy of the artist