

workday. @ **GVSU**

JANUARY 2024 MONTHLY UPDATE

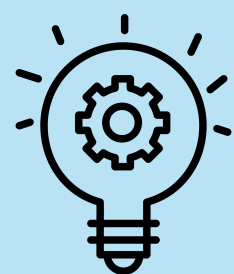


gvsU Need to Know: Go-Live & Support

The Workday go-live was successful with 4720 users logging in and creating 1018 requisitions, 1066 expense reports, and 4797 time off requests. As anticipated with a large-scale system implementation, several issues were identified and most were resolved quickly, as detailed in our [known issues](#) inventory. As you continue to navigate Workday, visit the [Workday Support](#) page for resources and to submit questions and feedback directly to Finance, HR, IT, or Student Employment for further support.

Leadership Corner

Join our [Workday for Managers](#) Zoom meeting on January 31 to hear about our first month live with Workday and what's coming next. Please ensure your teams have completed the [Workday Go-Live Checklist](#).



Project Update

The Workday Platform project stabilization period of January and February is a time of focused observation, support, and issue management – addressing key issues promptly. It is essential for all faculty, staff, managers, and student employees to transition to Workday to complete HR and Finance related activities. The third quarter of 2024 is expected to bring the Workday optimization period during which system enhancements and process changes will continue to be considered and evaluated.

Upcoming Activities

New activities are expected to be completed in Workday over the course of this year. We plan to share more information on financial reports in February, and spring will bring the beginning of performance management in Workday and other new components like Workday Strategic Sourcing. Learn more about [Workday @ GVSU in 2024 and beyond](#).



More Info

HR has completed their review of student employment assignments. If any further or new adjustments are needed, please contact the [Student Employment Office](#).

Please continue to visit the [All Finance](#) or [All HR](#) Workday Resources pages for a variety of job aids, demo videos, and other resources organized by topic.

Helpful Resources

Check out the [Workday @ GVSU Website](#) for more information. [Contact us](#) with any questions!



Thank you for your continued support,

Gregory J. Sanial, VP for Finance & Administration
Executive Sponsor, Workday

Katherine Fay, Director of the Project Management Office
Department Sponsor, Workday



1 Campus Drive
4465 P. Douglas Kindschi Hall of Science
Allendale, MI 49401

[Unsubscribe](#) from future emails