

# workday. @ GVSU

## MARCH 2024 MONTHLY UPDATE

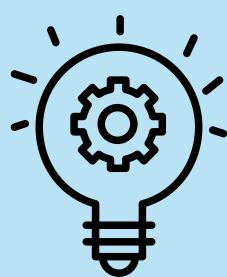


### gvsU Need to Know

Workday Strategic Sourcing will go live on April 22 and Workday Advanced Compensation will go live on May 1. Strategic Sourcing will streamline procurement processes. Advanced Compensation supports the merit increase process. Find more information below and on the [Workday Key Dates page](#).

### Leadership Corner

Join our [Workday for Managers](#) Zoom meeting on March 27 to learn about merit planning. Anyone with a faculty or administrative professional (AP) staff direct report will be considered a Planner in Workday. To ensure accuracy for merit planning, please [review your supervisory organization/organizational chart in Workday](#).

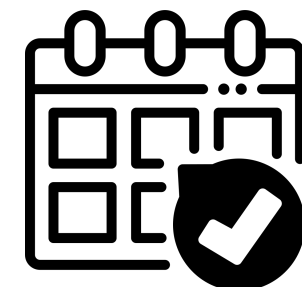


### Project Update

There are currently no [known issues](#). Please [submit a support request](#) directly to Finance, HR, or IT if you are experiencing a system issue. An optimization list of future Workday improvements/enhancements will be shared following the project stabilization period. Workday has already improved accountability, internal controls, and visibility into university operations.

### Upcoming Activities

[New courses & office hours](#) are being offered by the Finance and P2P teams. [Register for Finance Reports & Requests - Part 2](#) to learn more about financial reports, how labor is charged, requesting new worktags, and budget amendments. Register for a [Workday Strategic Sourcing](#) course if your work includes RFPs, bids, or supplier contracts.



### More Info

Transitioning to Workday has been a massive undertaking for the [Workday project team](#), as well as for many others across campus. A big thank you goes out to faculty and staff members for adjusting to the new system, with special appreciation to those collaborating with the Finance and HR teams. Learn more about our [Change Agents](#), [Super Users](#), and the [Workday Change Management effort](#).

### Helpful Resources

Check out the [Workday @ GVSU Website](#) for more information. [Contact us](#) with any questions!



Thank you for your continued support throughout the stabilization of Workday,

Gregory J. Sanial, VP for Finance & Administration  
Executive Sponsor, Workday

Katherine Fay, Director of the Project Management Office  
Department Sponsor, Workday



1 Campus Drive  
4465 P. Douglas Kindschi Hall of Science  
Allendale, MI 49401

[Unsubscribe](#) from future emails