



FEBRUARY 2024 MONTHLY UPDATE

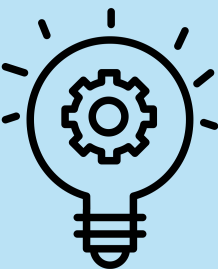


gvsU Need to Know: Go-Live & Support

Thank you to the GVSU community for working through the launch and adoption of Workday! While the implementation has largely been successful, we continue to work through all issues that arise and are identifying areas of optimization in response to your feedback. Updates have been made to the [known issues](#) list. Financial data, including budgets and actuals, has been loaded into Workday. If you are experiencing an issue that isn't listed, please [submit a support request](#) directly to Finance, HR, or IT.

Leadership Corner

Join our Workday for Managers Zoom meeting on February 28 to hear general updates and learn more about [Workday Strategic Sourcing](#). This component of Workday going live in April will usher in the entry of all new supplier contracts (and renewals to existing supplier contracts) into Workday.

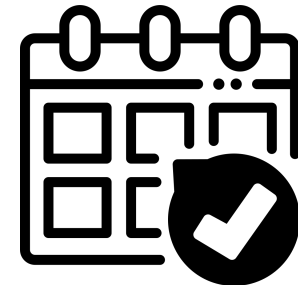


Project Update

Workday administers bi-annual releases in March and September. You may notice some slight differences beginning on March 9. Changes are expected to be minimal and additional training is not anticipated.

Upcoming Activities

New courses are being offered by the Finance and P2P teams. [Register for Finance Reports & Requests - Part 1](#) to learn how to run financial reports in Workday. Register for [Revised P2P Procedures](#) to learn about how the process with invoices and receipts has changed.



More Info

Human Resources support will be returning to 'business as usual' on March 1. This means that faculty/staff should contact the appropriate area for questions including [HR Business Partners](#), [Payroll](#), and [Student Employment](#).

HR Workday Tips: Managers will have a time-sensitive task in their Workday My Tasks when they have a new hire. Please ensure time is being entered in the live Workday system (GVSU9 is only for training). Paychecks are direct deposited on the [pay date](#).

Helpful Resources

Check out the [Workday @ GVSU Website](#) for more information. [Contact us](#) with any questions!



Thank you for your continued support,

Gregory J. Sanial, VP for Finance & Administration
Executive Sponsor, Workday

Katherine Fay, Director of the Project Management Office
Department Sponsor, Workday



1 Campus Drive
4465 P. Douglas Kindschi Hall of Science
Allendale, MI 49401

[Unsubscribe](#) from future emails