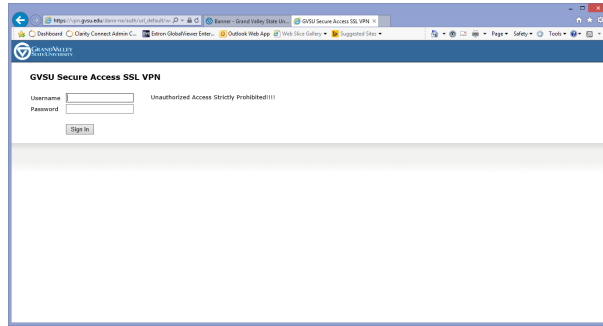
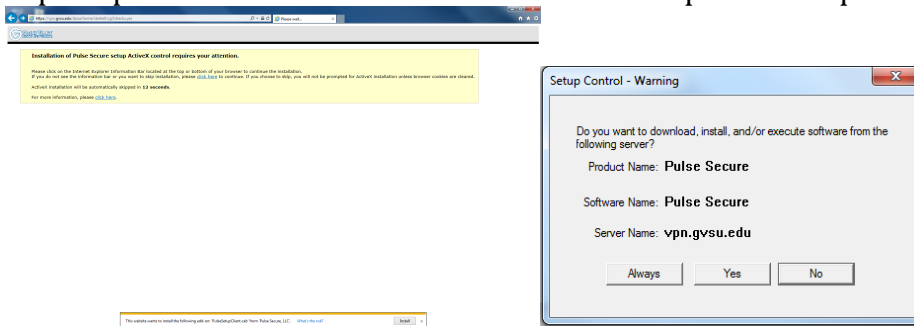


## Using the Faculty/Staff VPN website to Load Pulse Secure

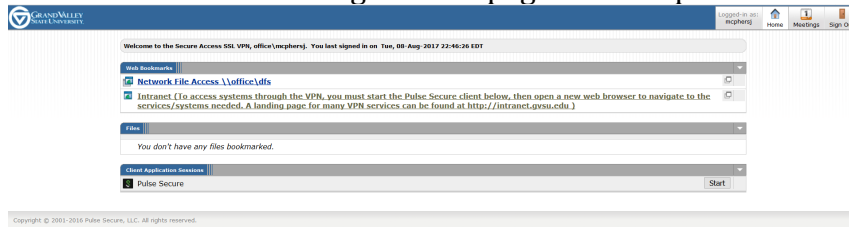
1. From your Web browser, go to <https://vpn.gvsu.edu/> and then enter your username and password:



2. You may be prompted to run the Pulse Secure to install or update. Accept those.



3. With the VPN Web client running you are presented with this page. Clicking the **Start** Button for **Pulse Secure** at the lower right of the page will complete the install .



4. If you need a secured connection to GVSU (INB, Library databases, Copy Center, etc.) click the **Pulse Secure** icon in the Dock on the lower right of the screen by the time. Login and now should now have the secured connection.

