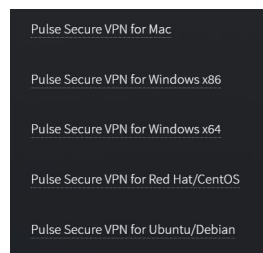


Downloading and Installing Pulse Secure

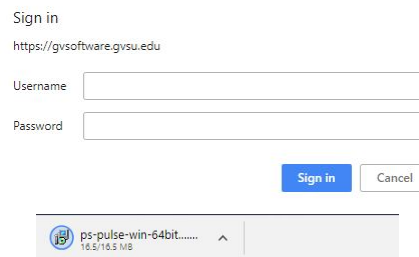
1. From your web browser go to gvsoftware.gvsu.edu And you get the page below:



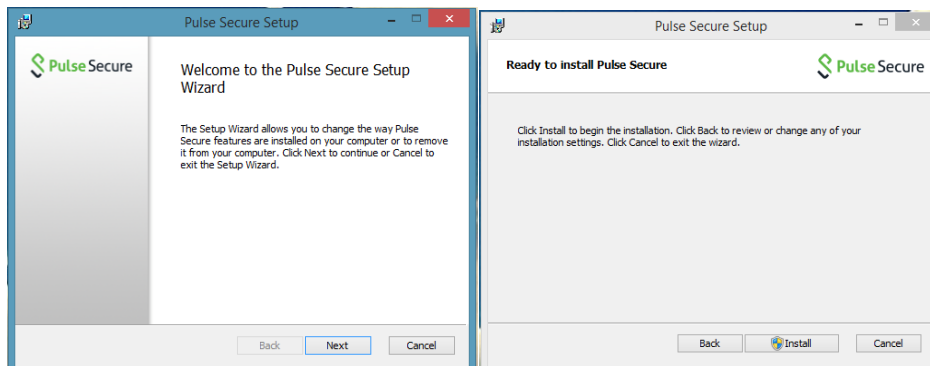
2. Select Student or Staff/Faculty links and then choose your version of Pulse Secure (Mac, 32 bit Windows, 64 bit Windows, Red Hat/CentOS, Ubuntu/Debian)



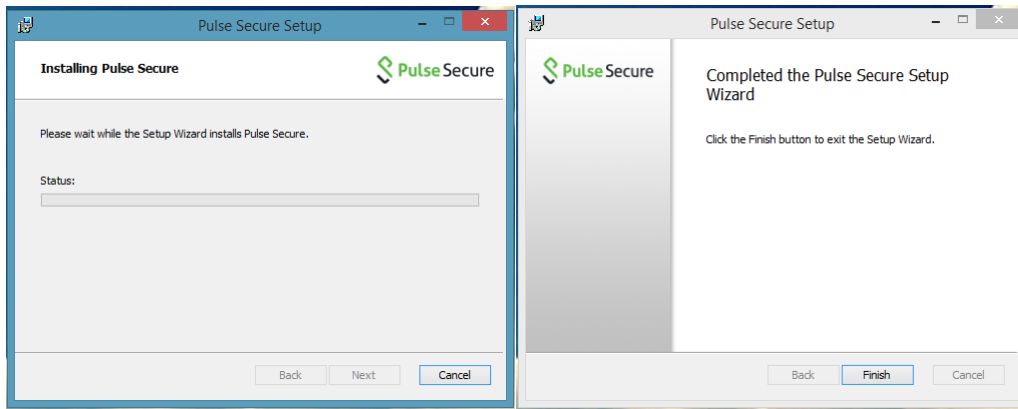
3. Use your GVSU network credentials to sign in and begin the download



4. When the Application opens, click on Install to start:



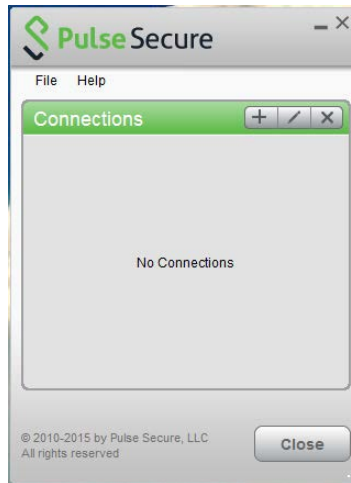
5. It will run through install and then indicate it has finished.



6. Open **Pulse Secure**

The following screen will appear:

you might see an SA account that has been auto created, this can be ignored.

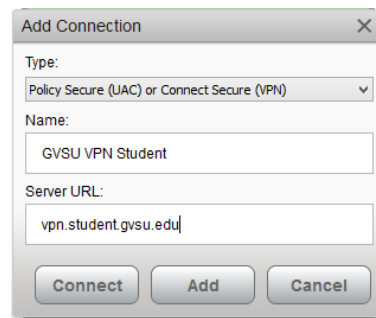


Click the “+” button in upper right corner to create the GVSU connection 2.

Fill out the **Name** and **Server URL** just as listed below then click **Add**

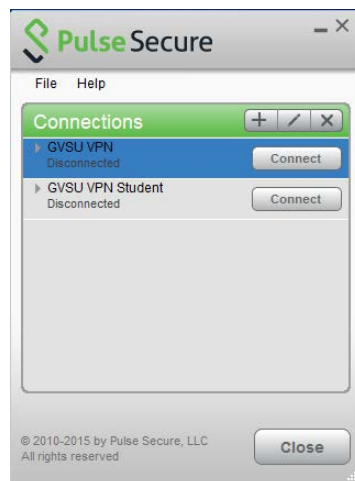


Faculty/Staff



Student

3. Now you have a connection setup that you can use to **Connect** or **Disconnect**



4. When you click on the **Connect** button. You are prompted for your UserName and Password (same as Outlook & Blackboard)



5. After it validates you see the green check circle icon appear by the **Connect/Disconnect** button

