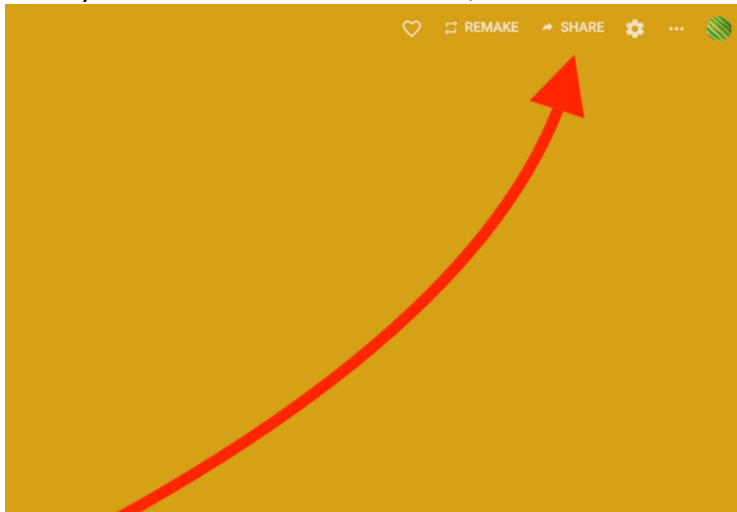


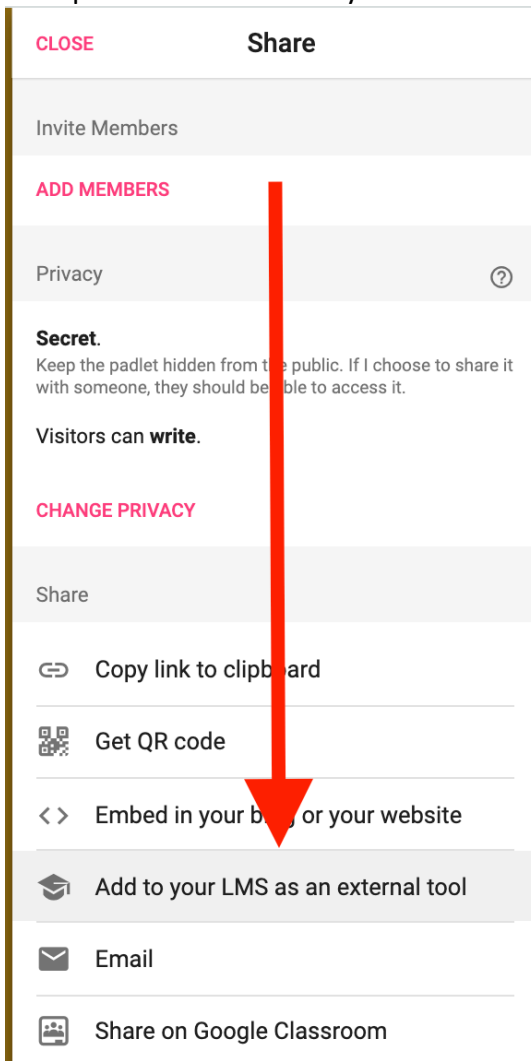
Integrating Padlet into your Blackboard course.

Here's how to get your Padlet integrated into BlackBoard.

1. Once you've created a Padlet board, Click the SHARE button in the top right corner.



2. Once open find the “Add to your LMS as an external tool” button



3. Here you will see a new menu, your first choices under “Behavior” are to either “Everyone works on this padlet.” Which means that this padlet is a shared collaborative document Or “Everyone works on their own copy of this padlet.” Which means that the padlet is a template and each student will get their own copy when they click on it.

Behavior

- ☒ Everyone works on this padlet.
- ☐ Everyone works on their own copy of this padlet.

4. Copy the URL found in the menu under the " (Secure) Launch/Tool URL" title.

Behavior

- ☐ Everyone works on this padlet.
- ☒ Everyone works on their own copy of this padlet.

Enter the following information in your LMS

(Secure) Launch/Tool URL [Copy](#)

<https://padlet.com/api/hooks/lti/callback>

Consumer key [Copy](#)

gvsu

Shared secret [Copy](#)

t33sv73hvspcyvc4

Icon URL [Copy](#)

<https://padlet.com/logo.png>

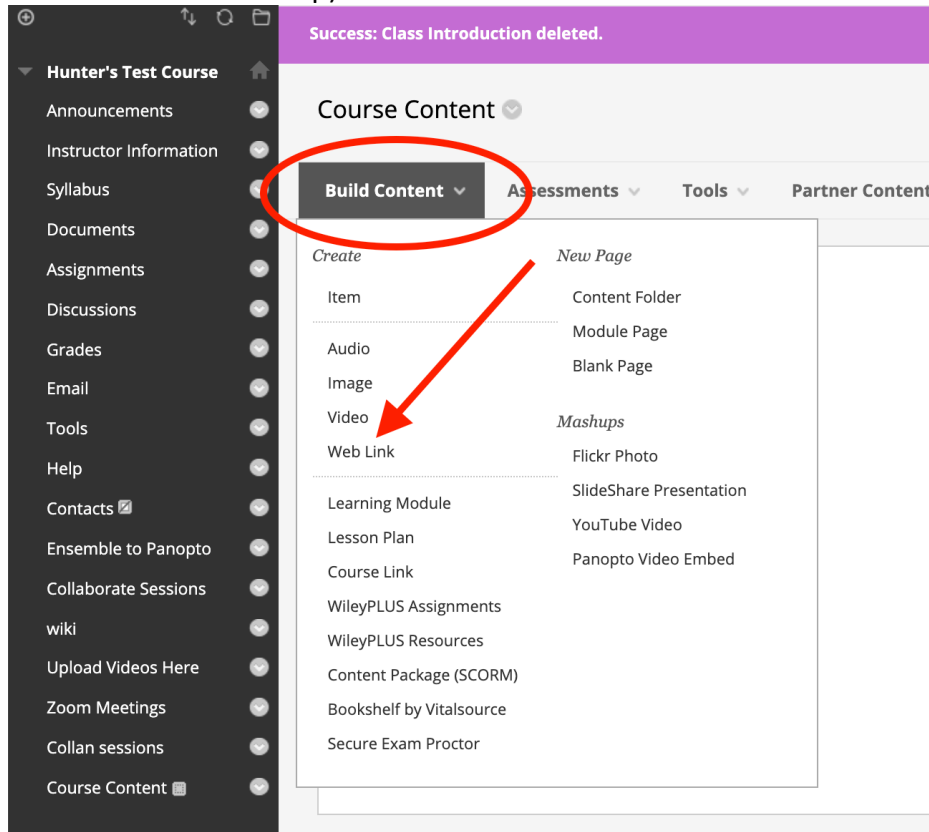
XML Config URL [Copy](#)

https://padlet.com/api/hooks/lti/xml_config?ten

Custom parameters [Copy](#)

public_key=tjide3s694z2nc5u
remake=yes

5. Once that is set to the appropriate Behavior setting go to the area in the course you want the Padlet integration (NOTE: Keep the Padlet open in another tab you will need both windows available in a future step) and click “Build Content” then “Web Link”



6. Once in the Web Link window, give it a name then paste the URL from step 4 into the URL text field, and finally check “This link is to a Tool Provider.”

Create Web Link

A Web Link is a shortcut to a Web resource. Add a Web Link to a Content Area to provide a quick access point to relevant materials. [More Help](#)

★ Indicates a required field.

WEB LINK INFORMATION

★ Name

★ URL
For example, <http://www.myschool.edu/>

☐ This link is to a Tool Provider. [What's a Tool Provider?](#)

DESCRIPTION

Text

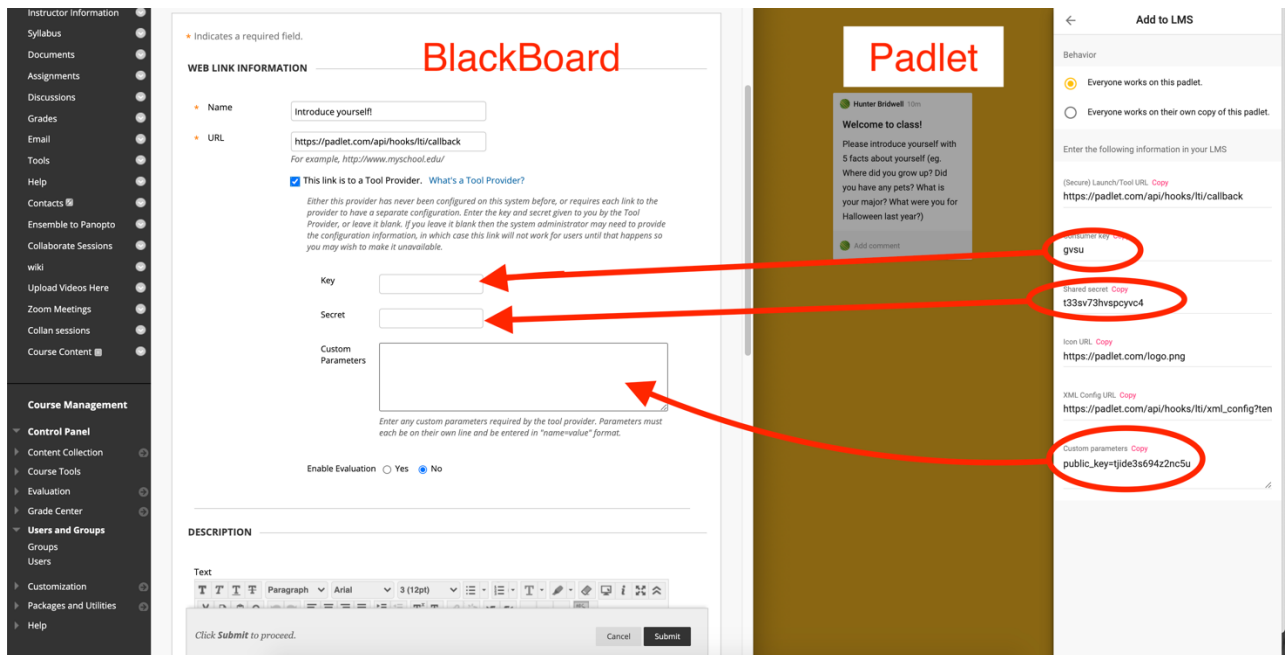
Click **Submit** to proceed.

Cancel Submit

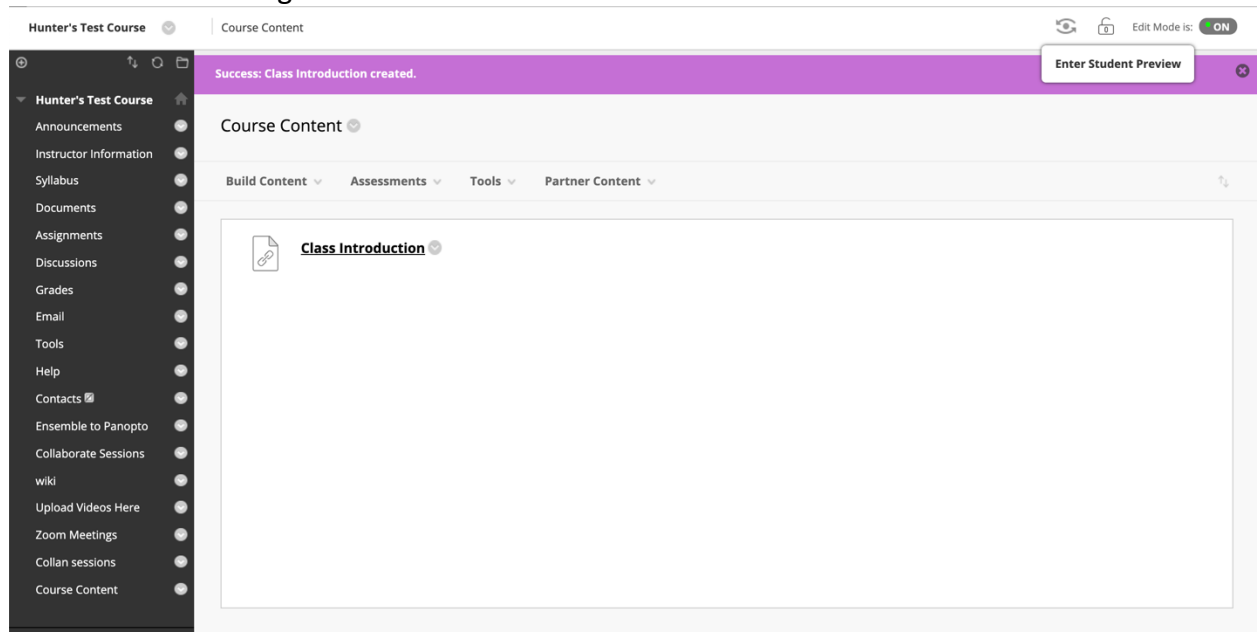
The screenshot shows the "Create Web Link" form. The "Name" field is filled with "Course Introduction". The "URL" field is filled with "https://padlet.com/api/hooks/tti/callback". A red arrow points from the URL field to the "This link is to a Tool Provider" checkbox, which is currently unchecked. Another red arrow points from the "This link is to a Tool Provider" checkbox to the "Description" text area. The form includes a rich text editor for the description and a "Submit" button at the bottom right.

7. Next you'll copy the correct text from Padlet into the correct parameters in Blackboard.
- Consumer key* should be pasted into the *Key* field.
- Shared secret* should be pasted into the *Secret* field.
- Custom parameters* should be pasted into the *Custom Parameters* field

NOTE: Do not turn on *Enable Evaluation* when integrating. Doing so will break the link and the only way to fix it is to start over.



8. Once those fields are all filled with the appropriate text click the Submit button at the bottom of the Blackboard Page.



This will create a link that takes you directly to the Padlet or to the student's new Padlet based off your template. You can also test to make sure it worked by clicking on the link you created in Blackboard.