
Juvenile Justice Vision 20/20 Training Event

Keynote: LGBTQI Youth: Improving Outcomes for Youth, Families and Communities

Keynote Address: Thursday, June 8, 2017 9:00 a.m.—11:45 a.m.

Presented By: Mykel Selph, Training and Technical Assistance Provider, National PREA Resource Center

Mykel Selph is a social justice consultant with expertise in gender-responsive principles, the treatment of the LGBTQI population, sexual safety and the intersection of race and culture in relation to criminal and juvenile justice system reform. She has worked with many correctional agencies throughout the country on these issues.

With a foundation in mental health and counseling, Mykel has worked in residential treatment, public health, and homeless services. She began her career in the justice field as the Director of the Office of Girls and Gender at the Cook County Juvenile Detention Center in Chicago, IL. In addition to serving the National PREA Resource Center as a training and technical assistance provider, Mykel is the founder and principal of T.R.U.E. Consulting, a social justice consulting firm. She is also co-host of The Collective Lens, a social justice podcast that serves as a platform of education and call to action for a community of people with varying perspectives.



Mykel's personal and professional mission is to create safe spaces for ongoing dialogue about social justice issues that are nonjudgmental and empathetic. She believes that dialogue is an opportunity for us to acknowledge our differences and begin learning to peacefully coexist. Mykel has Masters degrees in Community Counseling and Public Administration. She is currently earning her doctorate in Public Policy and Administration.

Workshop Overview: In this presentation, keynote speaker Mykel Selph will identify relevant PREA standards that will guide the purpose for the day's workshops. She will also define what it means to identify as LGBTQI. Participants will review common terms and definitions, as well as be introduced to culturally relevant language as it relates to the LGBTQI community. Participants will be introduced to intersectionality and have the opportunity to explore how to identify their own biases. Ms. Selph will explore with participants the difference between gender identity and sexual orientation and discuss the importance of this distinction for juvenile justice professionals.

To guide the presentation and discussion, Mykel Selph will review key concepts from the Toward Equity curriculum developed by The Equity Project. This presentation will be based on Lesson 1 – Understanding Sexual Orientation, Gender Identity, and Gender Expression and Lesson 2 – Dismantling Bias and Fostering Equity.

In this presentation, participants will have the opportunity to engage in dialogue with Mykel and each other and ask questions via exercises and small group discussion.

Plenary: Equitable and Culturally Relevant Responses to LGBTQI Youth for Juvenile Justice Professionals

Session: Thursday, June 8, 2017 1:30 p.m.—2:45 p.m.

Presented By: Mykel Selph, Training and Technical Assistance Provider, National PREA Resource Center

Workshop Overview: A follow up to the keynote presentation, this plenary session will define appropriate responses of juvenile justice professionals to the juvenile delinquent behavior of LGBTQI youth in ways that are equitable and culturally relevant. As LGBTQI youth who are justice-involved often present unique concerns, Ms. Selph will discuss various medical and mental health considerations for this population. In addition, she will address specific considerations for transgender youth.

Juvenile Justice Vision 20/20 Training Event

To guide the presentation and discussion, Mykel Selph will review key concepts from the Toward Equity curriculum developed by The Equity Project. This presentation will be based on Lesson 3 – Enhancing Communication and Building Trust with LGBT Youth, and Lesson 4 – Reducing Risk and Promoting Protection.

In this presentation, participants will again have the opportunity to engage in dialogue and ask questions via exercises and small group discussion.

Plenary: Ensuring the Safety and Equity of LGBTQI Youth in Secure Settings

Session: Thursday, June 8, 2017 3:15 p.m.—4:30 p.m.

Presented By: Mykel Selph, Training and Technical Assistance Provider, National PREA Resource Center

Workshop Overview: In this presentation, participants will have an opportunity to engage in dialogue with keynote speaker Mykel Selph. This will be a chance to ask questions specific to their work environments, as well as make connections about the material presented in earlier sessions. Ms. Selph will lead participants through an examination of the Prison Rape Elimination Act (PREA) Standards and what is required of juvenile justice professionals who work with LGBTQI youth. Participants will have the opportunity to discuss the Standards and further explore specific guidelines for those working with justice-involved LGBTQI youth. Ms. Selph will also take this opportunity to elaborate on any outstanding issues relevant to the work of juvenile justice professionals as they interact with LGBTQI youth.

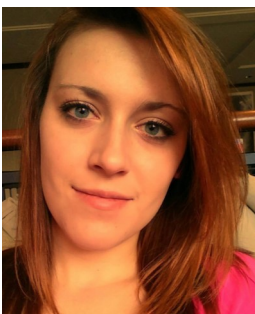
To guide the presentation and discussion, Mykel Selph will review key concepts from the Toward Equity curriculum developed by The Equity Project. This presentation will be based on Lesson 5 – Ensuring Safety and Equity in Secure Settings and Lesson 6 – Respecting and Supporting Transgender Youth.

Plenary: LGBT Youth and Foster Care

Session: Friday, June 9, 2017 9:00 a.m.—11:30 a.m.

*Presented By: Mary Banghart Therrien, Ph.D., LMSW, Grand Valley State University School of Social Work
Rachel Wittebols, MSW Candidate, Grand Valley State University School of Social Work*

Mary Banghart Therrien, Ph.D., LMSW, has been teaching bachelor and masters-level students in the School of Social Work at Grand Valley State University for more than 12 years. She has presented to national, state, and local audiences on working effectively with LGBTQI-identified individuals. She has more than 20 years of experience with non-profit agencies, neighborhood and community-based organizations, and she has worked in the child welfare field in many capacities. Banghart Therrien received her doctorate from Michigan State University, where her research focused on the experiences of lesbian, gay, bisexual, and transgender youth who were in or aging out of the foster care system. Banghart Therrien received a Bachelor of Arts degree in Psychology and Sociology from Michigan State University and a Master of Social Work degree from Grand Valley State University.



Rachel Wittebols is a Master's of Social Work student at Grand Valley State University and an alumna of the School of Criminal Justice at Grand Valley State University. She works as a Graduate Assistant for Dr. Mary Banghart Therrien in the School of Social Work at Grand Valley State University and as a Relief Youth Specialist at Ottawa County Juvenile Detention. At the detention center, she monitors the health, safety, and behavior of the youth in her care and is a substitute teacher in the areas of language arts, social studies, art, and math. Rachel has undergraduate research experience in the area of juvenile justice and has also presented her work on student research at the 2016 Academy of Criminal Justice Sciences Conference in Denver, Colorado. After she graduates with her MSW, Rachel hopes to work with court-involved youth as a clinical social worker.

Workshop Overview: This presentation will provide an introduction to the ever-growing terminology and concepts related to lesbian, gay, bisexual, transgender, queer, and intersex plus youth. In addition, an update on research efforts to collect accurate data on the sexual orientation, gender identity and gender expression (SOGIE) of youth involved in the child welfare and juvenile justice systems will be shared.