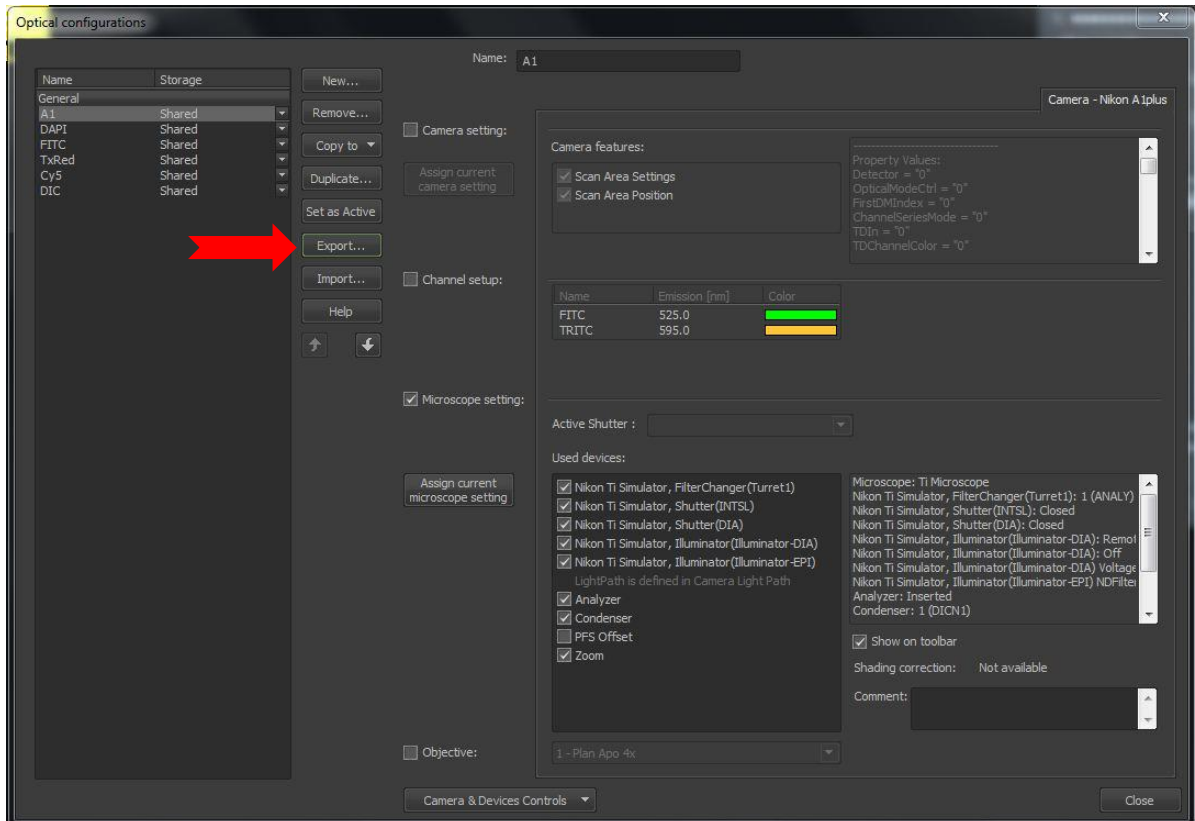


Restoring Layouts in NIS-Elements

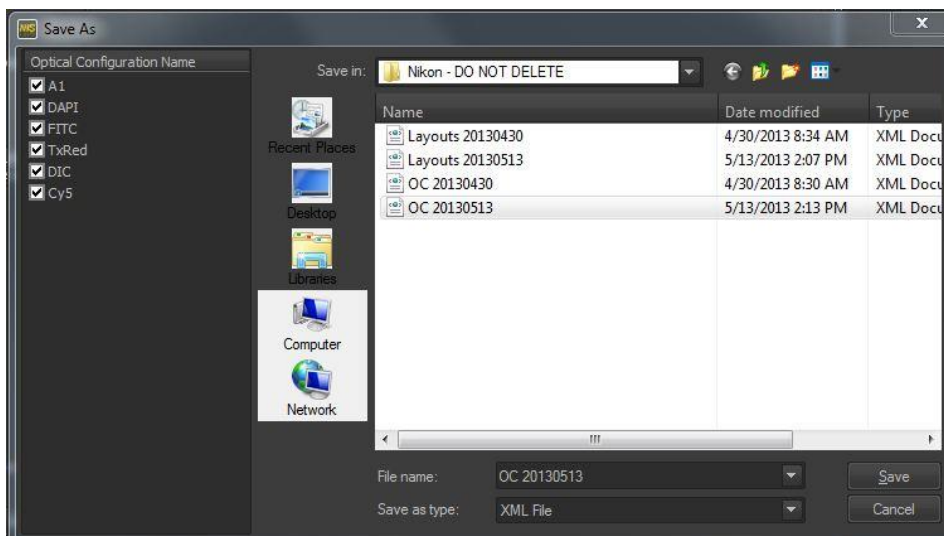
Edwin de Feijter

05/13/2013

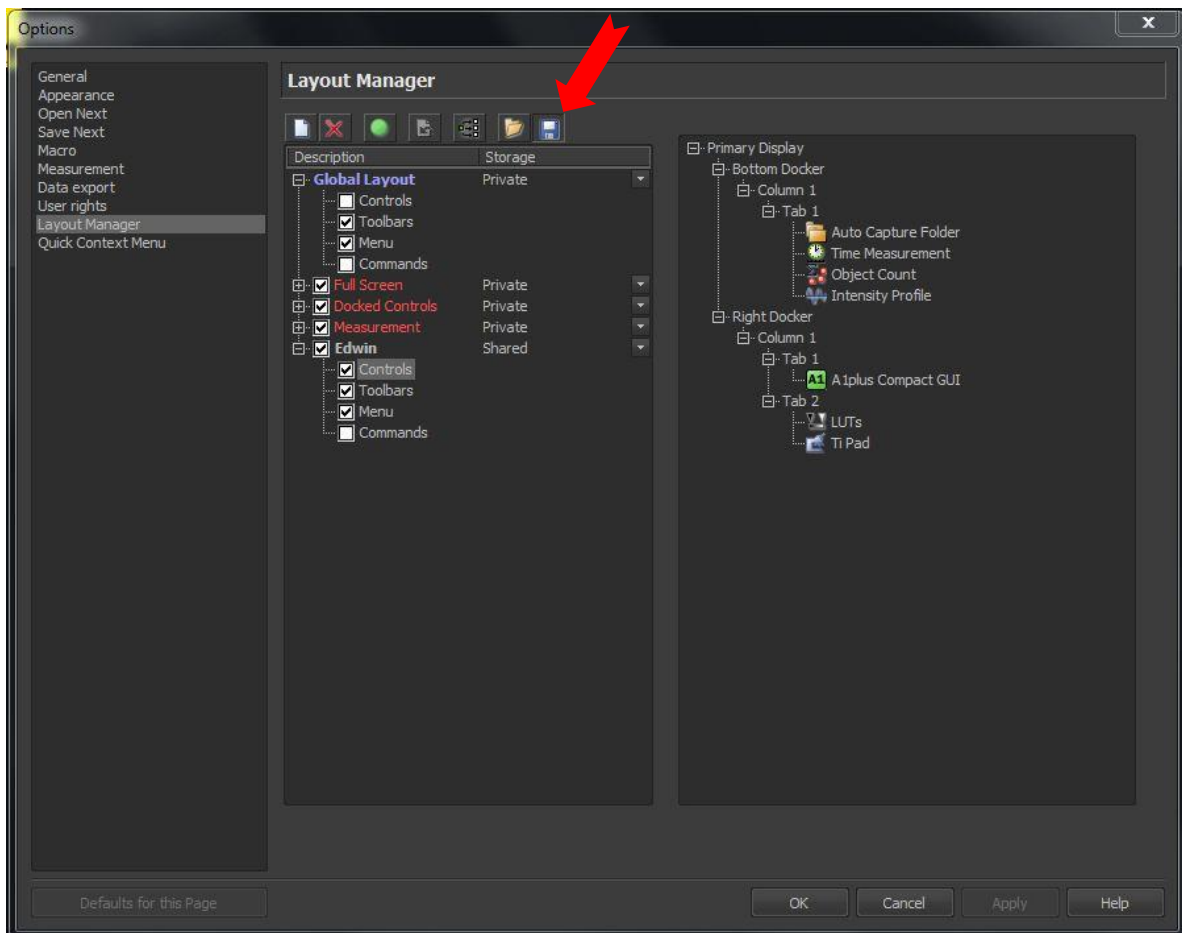
1. Export optical configurations and layouts to XML files:
 - a. Open the Optical Configurations (OC) menu, and select the “Export” button.



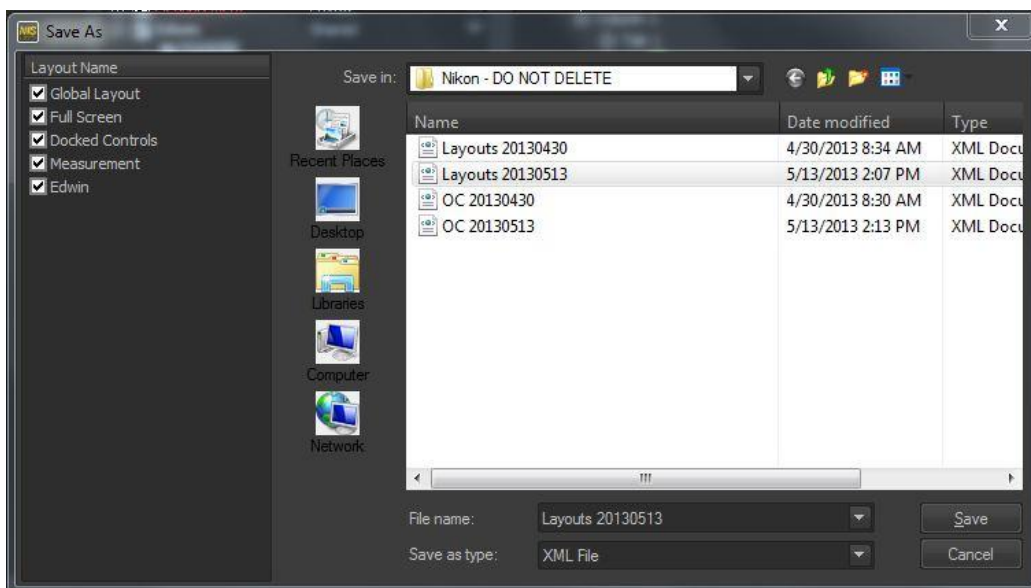
- b. Select a location and type a filename for the OC XML file. Remember this location since you will need to access it later.



- c. Open the Layout Manager, and select the “Export Layouts” button.

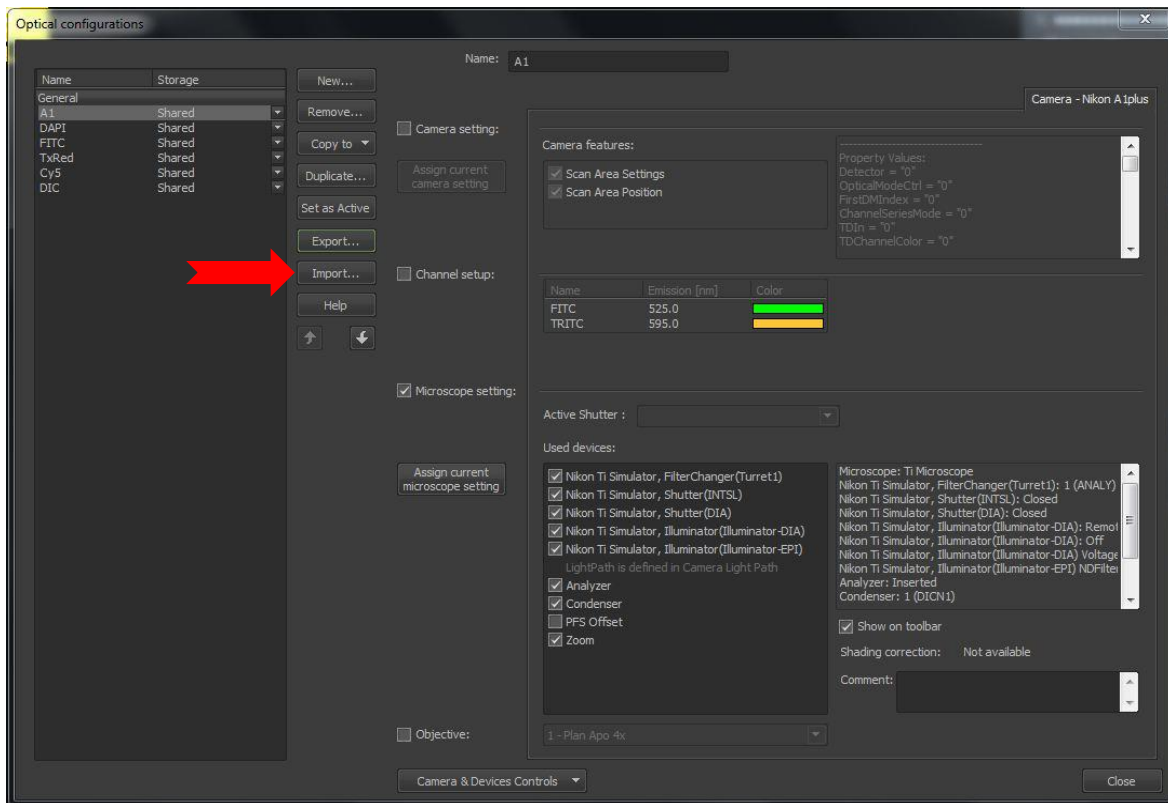


- d. Select a location and type a filename for the Layout XML file. Remember this location since you will need to access it later.

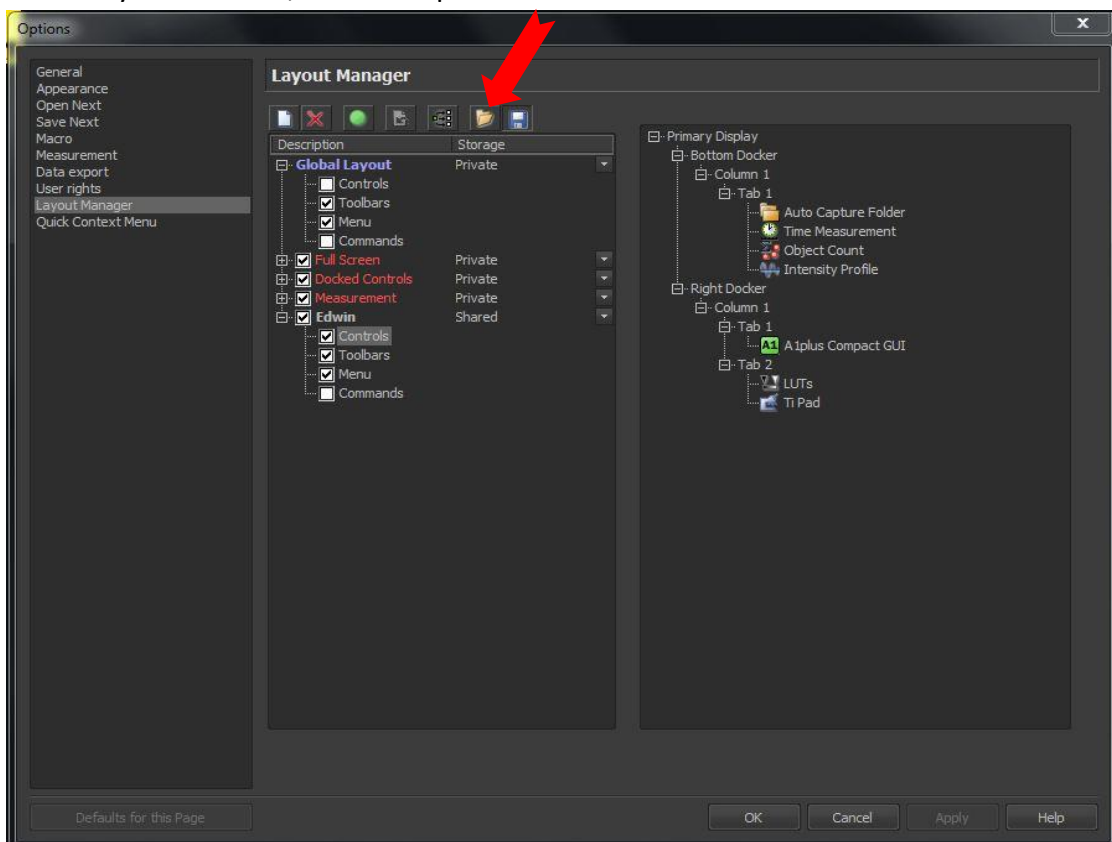


2. Run commands to apply the new OCs and Layouts:

- a. Open the Optical Configurations (OC) menu, and select the “Import” button. Locate & select the previously saved OC XML file, and hit “Open”.



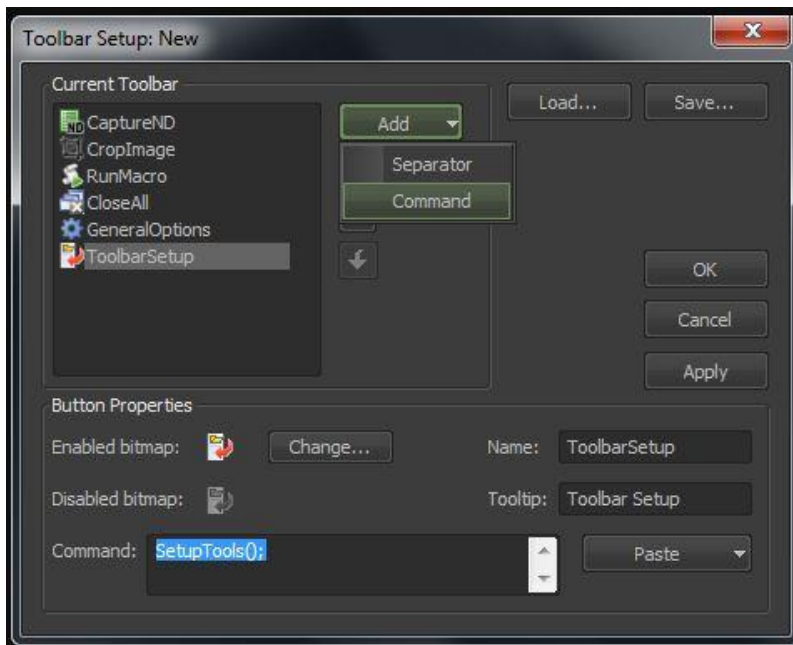
- b. Open the Layout Manager, and select the “Import Layouts” button. Locate & select the previously saved Layout XML file, and hit “Open”.



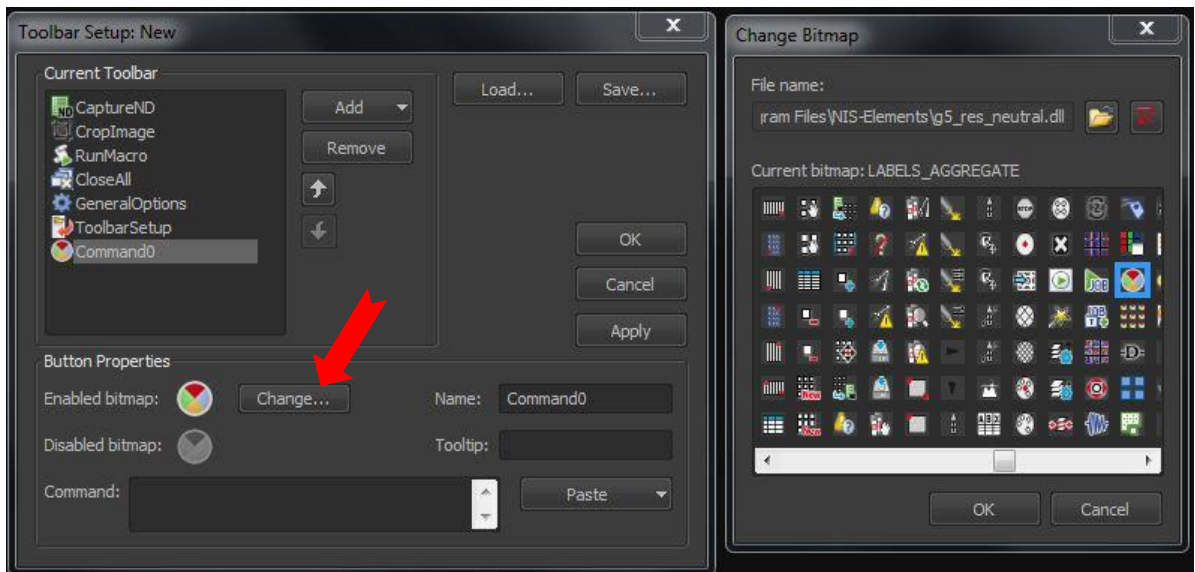
3. Create a custom icon for restoring layouts:
 - a. Select the “Toolbar Setup” icon in the left-side Elements toolbar.



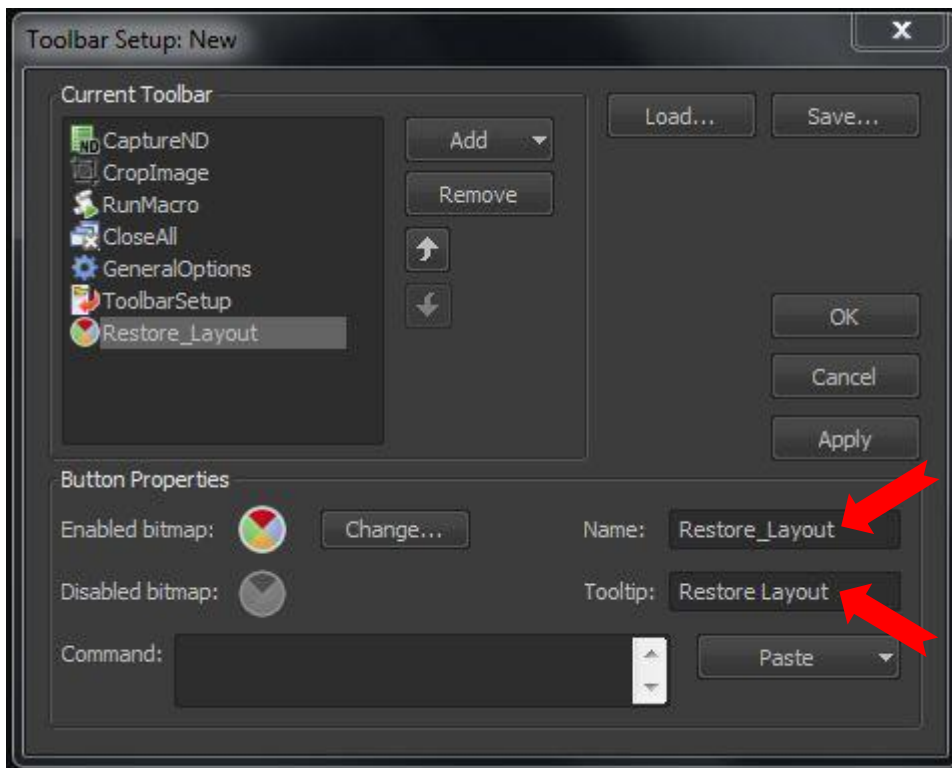
- b. Under the “Add” pull-down menu, select “Command”.



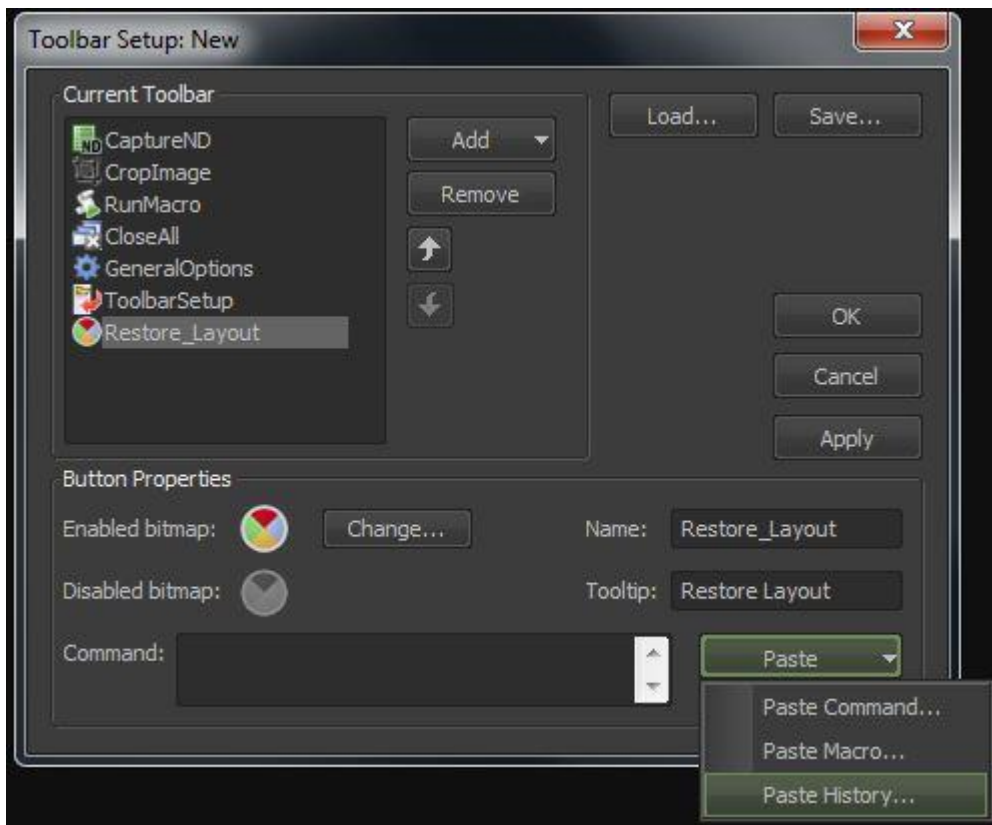
- c. Click on the “Change” button to select a bitmap for the new icon.



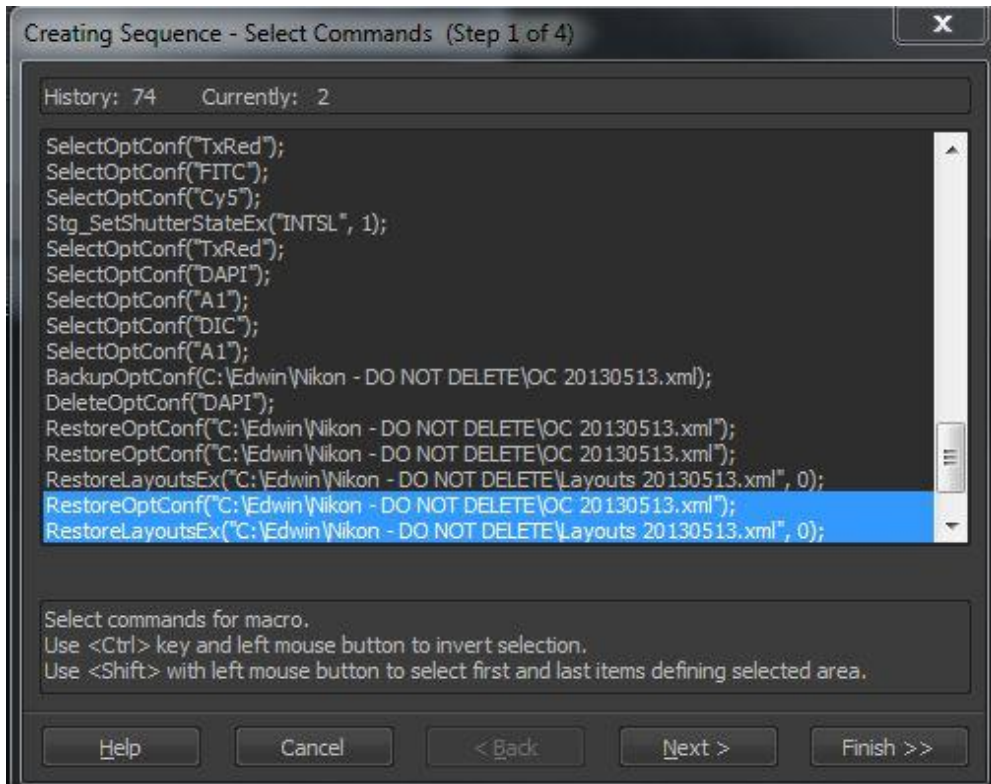
- d. If desired, enter a Name and Tooltip for the new icon.



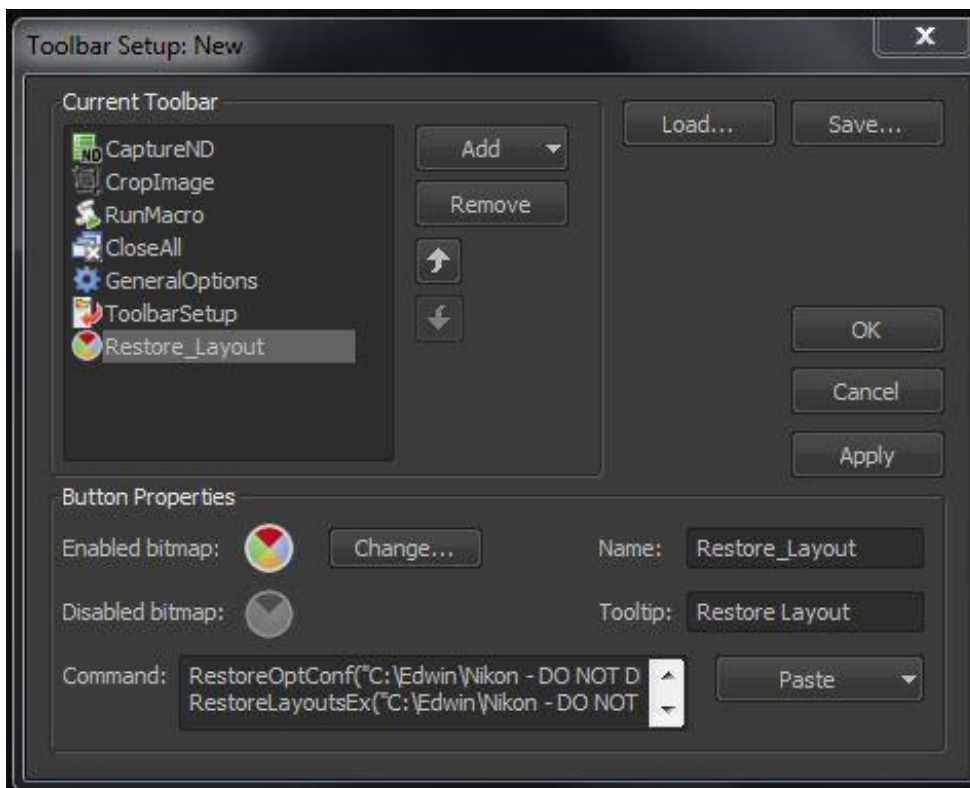
- e. From the "Paste" menu, select "Paste History".



- f. Highlight the last two lines (starting “RestoreOptConf...” and “RestoreLayoutsEx...” in the command history, and click Next.



- g. You can remove redundant commands (step 2 of 4) and otherwise edit the commands (step 3 of 4) before clicking Finish.
- h. The resulting two commands are now pasted in the Command window. Click “Apply”, followed by “OK”.



- i. The newly created “Restore Layout” icon will be displayed in the left-side Elements toolbar.



4. IMPORTANT!! Do NOT yet use the new button. First, repeat steps 1c & 1d to save the newly created button to the layout. If this is not done, the new icon will “self-destruct” when you click on it, because the previously saved layout did not include it yet...
5. When using the Restore Layout button, you may get the following prompt. This permits control over individual layouts. To restore all saved layouts, check the box “Do this for next all conflicts” and select “Import and Replace”.

