



Technical Notes



NIS-Elements: Installing the Lumenera Driver

This document specifies the install procedures for the NIS-Elements Documentation (D) package and the Lumenera Driver for the Infinity 1-2C and the 1-3C.

Note: Operation of the Driver is only possible with the purchase of the Lumenera Driver material number 97152 (which is included in material # 97161 and 97162).

Note: Installing Lumenera Software is not required. Lumenera drivers are installed in Step #3.

Note number: 0013
Creation Date: 9/2010
Date Modified: 6/2011
Software Version: 3.2
Package: D Package Only
32-bit Only
Module: Lumenera Driver

1) Install NIS-Elements Documentation Package.

- We do not recommend installing the version on the shipped DVD, as a more recent version may be available on the download site specified in Step #3.
- Please note that the Lumenera driver will not be available in the NIS-Elements install 'Camera Section.'

2) Check the HASP Info for the Module '97152 Lumenera Driver'

- If this is not there, please contact the NII Order Department.

| HASP SRM memory | | |
|-----------------|-----------------------|---------|
| | | Version |
| Systems | NIS Elements D: SUA-1 | 3.2 |
| Modules | 97152 Lumenera Driver | |

3) The Lumenera driver is available for both camera modules at the NIS-Elements Download Site:

<http://www.nissoftware.net/NikonSaleApplication/>

Once at this site, enter User Name and Password:

User Name: Your Name (John Deer)

Password: the 8 digit code on the purple USB HASP key



After entering the site, scroll to the bottom of the page and click on 'NII Modules, Drivers and Macros:'



[NII Modules, Drivers and Macros](#)

After clicking on the above link, select and save the Lumenera zip folder that MATCHES the install build that you are installed in Step #1.

For example, if you installed Version 3.2X, download the driver with the 3-2 in its file name:

[Lumenera-Install-3-0.zip](#)

[Lumenera-Install-3-2.zip](#)

[Lumenera-Install-Build-587.zip](#)

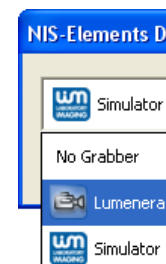


4) After opening and saving the zip file, double click on the 'Setup.exe' file.

- This will load the driver into the correct file locations automatically.

5) Open NIS-Elements Documentation Package by double clicking on icon.

6) Select the Lumenera Driver in the drop down menu at Start Up:





Technical Notes



NIS-Elements: Installing the Lumenera Driver in version 4.00.07 and newer

This document specifies the install procedures for the NIS-Elements Documentation (D) package and the Lumenera Driver for the Infinity 1-1C, 1-2C, 1-2CB and the 1-3C.

Note: Operation of the Driver is only possible with the purchase of the Lumenera Driver material number 97152 (which is included in material # 97161 and 97162).

Note: Installing Lumenera Software is not required. Lumenera drivers are installed in NIS-Elements.

Note number: 0018
Creation Date: 3/2012
Modified Date: 4/2012
Software Version: 4.00.07
Package: D Package Only
32 & 64 bit
Module:
97152 Lumenera Driver

1) Check the HASP Info for the Module '97152 Lumenera Driver'

| HASP SRM memory | | |
|-----------------|-----------------------|---------|
| | | Version |
| Systems | NIS Elements D SUA-1 | 3.2 |
| Modules | 97152 Lumenera Driver | |

- If this is not listed, please contact the NII Order Department.

2) The Lumenera driver is available for all four camera modules in NIS-Elements Ver. 4.00.07 Build 787 and newer and can be obtained from the Download Site:

<http://www.nissoftware.net/NikonSaleApplication/>

Once at this site, enter User Name and Password:

User Name: Your Name (John Deer)

Password: the 8 digit code on the purple USB HASP key



After entering the site, click on 'Current Release Install Files'



[Current Release Install Files](#)

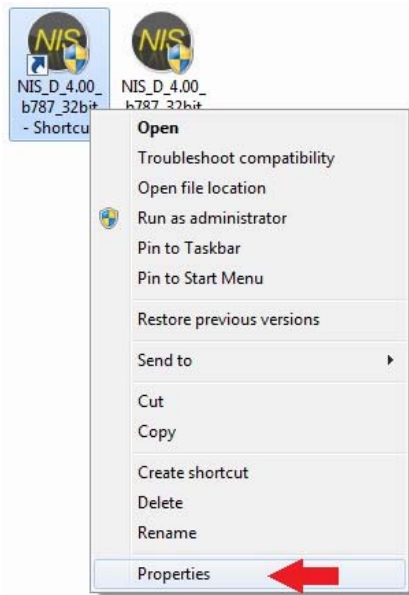
After clicking on the above link, select and save the appropriate installer for your PC, 'NIS_D_4.00_b787_64bit.zip' or 'NIS_D_4.00_b787_32bit.zip'

[NIS_D_4.00_b787_32bit.zip](#)

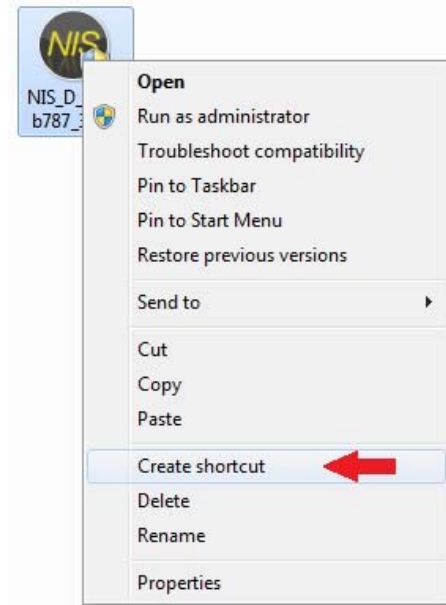
[NIS_D_4.00_b787_64bit.zip](#)



- 3) After opening and saving the zip file, Right-click on the 'NIS_D_4.00_b787_xxbit' file and select 'Create shortcut'



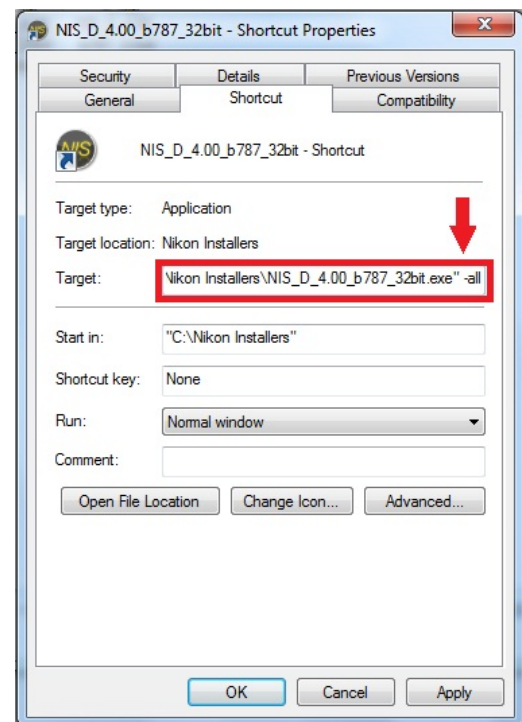
- 4) Then Right-click on the created shortcut and select 'Properties'



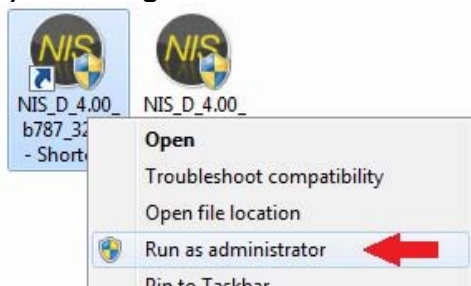
- 5) On the 'Shortcut' tab in the Properties dialog, place the cursor at the end of the text in the 'Target' field and type "-all"
- o Note: there is a space before the dash "-"
 - o For example:

"C:\Program Files\NIS-Elements D\nis_d.exe" -all

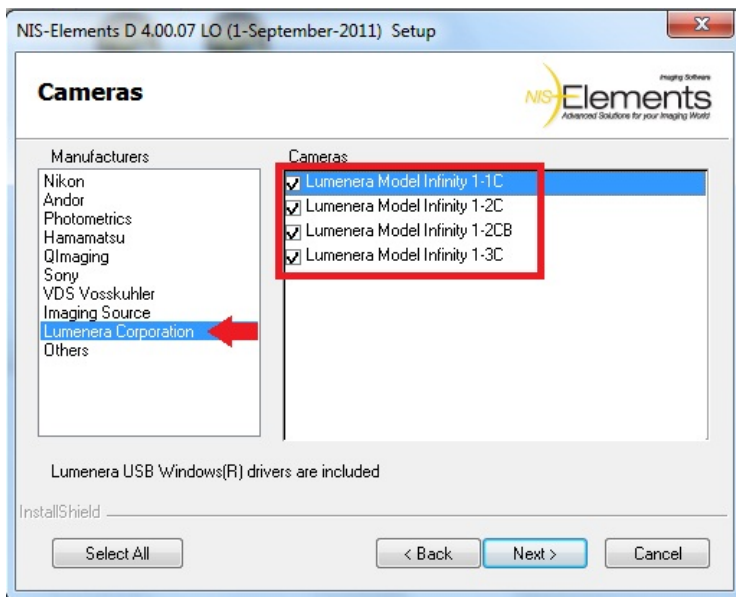
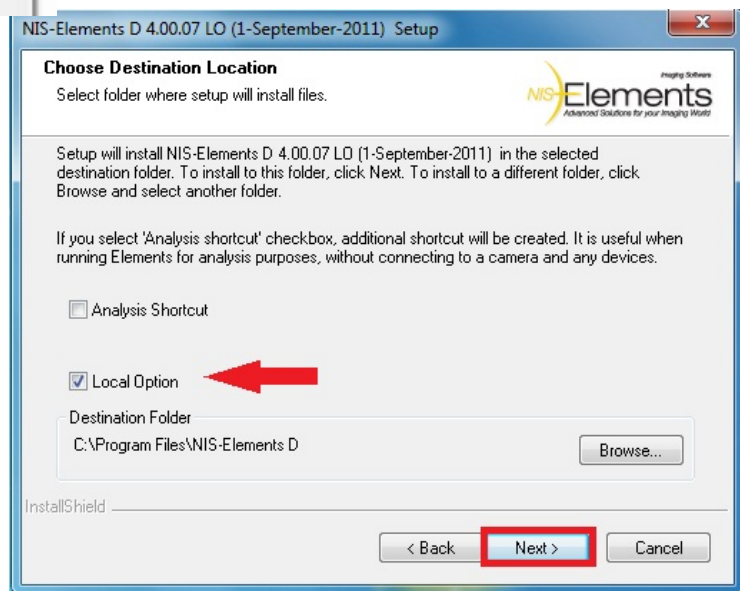
- 6) Click 'Apply' and 'OK'



7) Now Right-click on the created shortcut and select 'Run as administrator'

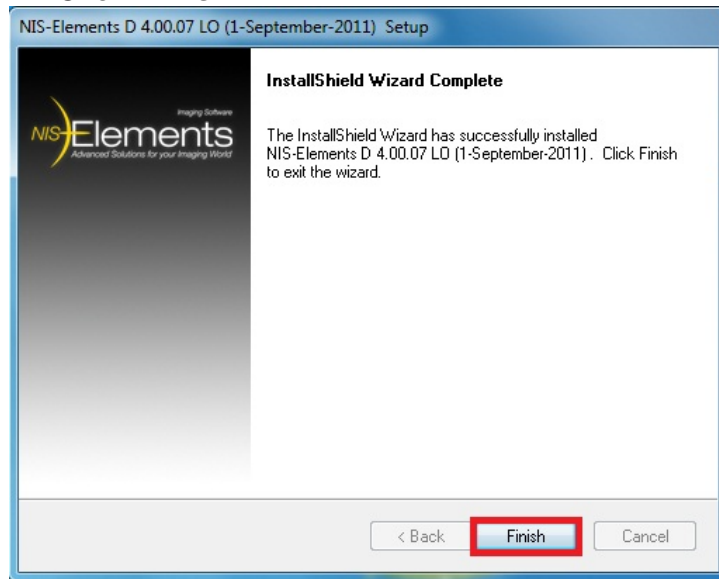


8) Be sure to select 'Local Options'



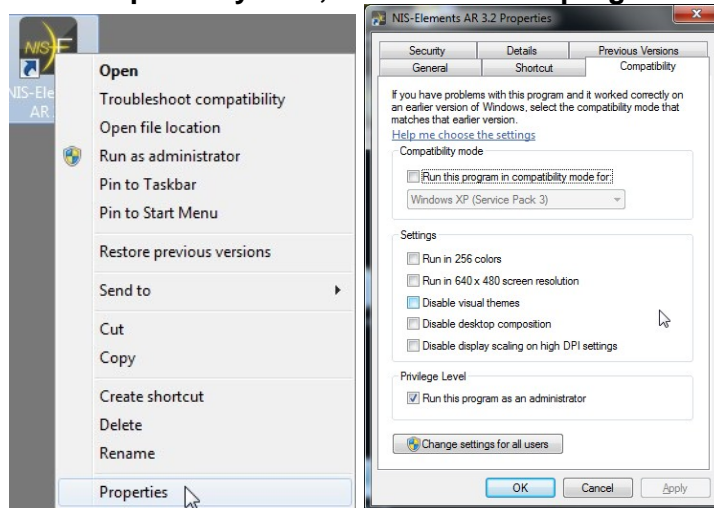
9) In the 'Cameras' dialog, select 'Lumenera' under 'Manufacturers' and then choose all camera models. This will insure all necessary files will be installed.

- 10) After the installation of the drivers are complete a confirmation screen will appear. Click 'Finish.'



- 11) Plug in the camera now.

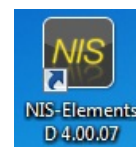
- 12) The shortcut for NIS-Elements then needs to be set to 'Run as administrator.' Right-click on the Shortcut icon and select 'Properties.' Then under the 'Compatibility' Tab, check 'Run this program as an administrator' and click 'OK.'



- 13) Plug in the HASP key now.



- 14) Open NIS-Elements Documentation Package by double clicking on icon.



- 15) Select the Lumenera Driver in the drop down menu at Start Up:

