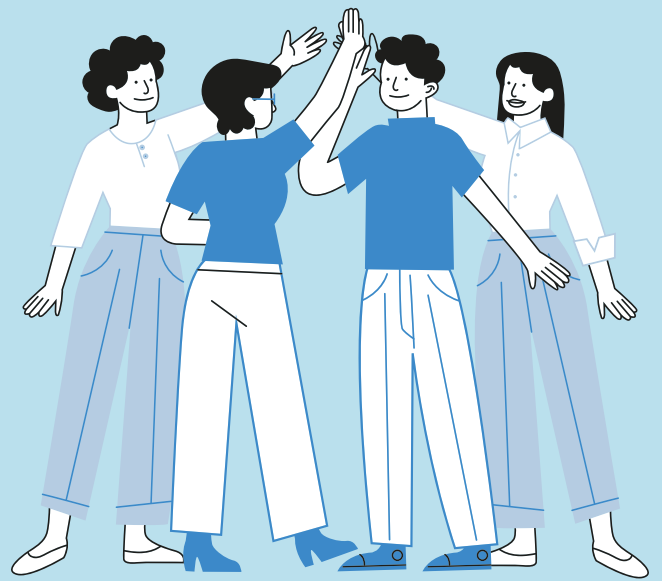


How Important is Being a Good Employee?

Take a look at some data!

"97.5% of employers think teamwork and collaboration are important in the workplace."

(The Nth Degree)



"In the Employer Career Competencies survey, all employers rated 'Professionalism/Work Ethic' as 100% essential."

(National Association of Colleges and Employers)

"95.9% of employers find communication skills essential."

(The Nth Degree)



"68.6% of employers are looking for employees with quality leadership skills."

(The Nth Degree)