

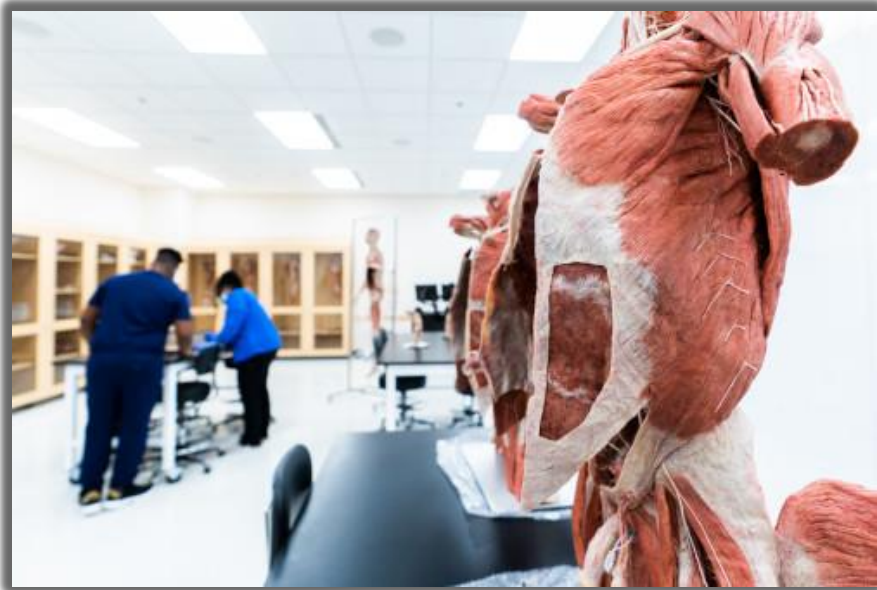
# Anatomy Lab – DCIH 312



The Anatomy Lab offers a variety of tools allowing students to interact with different parts of the human body.

Plastinated specimens are authentic human specimens and present an up-close look at human anatomy.

# Anatomy Lab – DCIH 312



Plastinates are accurate representations of preserved bodies illustrating all functional structures perfectly.

[Click here for more information about von Hagens Plastination](#)

# Anatomy Lab – DCIH 312



# Anatomy Lab – DCIH 312



# Anatomy Lab – DCIH 312

