



DEAN OF STUDENTS

STUDENT AFFAIRS

July 2021 - June 2022 gvsu.edu/dso



4,000+

PARENTS AND SUPPORTERS PARTICIPATED IN ORIENTATION



1,825

STUDENT CARE REFERRALS

46%

ON-CAMPUS RESIDENTS

53%

OFF-CAMPUS RESIDENTS

REFERRED BY

- STAFF (715)
- FACULTY (654)
- STUDENTS (89)
- GVPD (55)
- COMMUNITY MEMBER (16)

TOP CONCERNS

- #1 MENTAL HEALTH - 44%
- #2 MEDICAL - 14%
- #3 PERSONAL WELLBEING/SAFETY - 10%
- #4 FAMILY EMERGENCY/DEATH OF FAMILY- 6%
- #5 FINANCIAL/INSECURITY - 5%

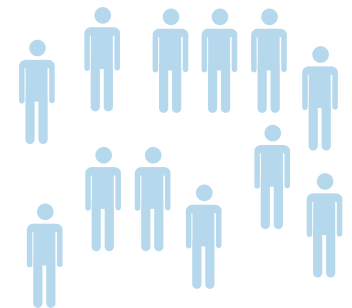
2,100+

OFF-CAMPUS STUDENTS IN ISOLATION/QUARANTINE WERE CONTACTED AND OFFERED RESOURCES



253

STUDENTS UTILIZED OMBUDS SERVICES



16%

FIRST YEAR STUDENTS

28%

MALE

56%

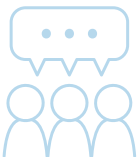
FEMALE

TOP STUDENT CONCERNS

- ACCUSATIONS OF CHEATING
- LACK OF EMPATHY WHEN ILL OR SICK
- FINANCIAL CONCERNS
- ANXIETY/MENTAL HEALTH/STRESS

7

VICE PROVOST ADVISORY BOARD MEMBERS



330

TOTAL MEALS PROVIDED TO STUDENTS IN LAKER MEAL SHARE PROGRAM



437

STUDENT MEAL DONATIONS

DATA FOR 2021-2022 WAS IMPACTED BY COVID-19 AND MAY NOT REPRESENT TYPICAL PROGRAM STATISTICS.