



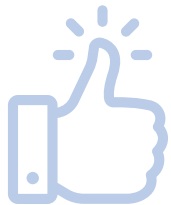
DEAN OF STUDENTS

STUDENT AFFAIRS

July 2020 - June 2021 | gvsu.edu/dos



1,000+
PARENTS AND SUPPORTERS
ACCESSED ONLINE
ORIENTATION MODULE



98%
FOUND THE ONLINE
MODULE "VERY HELPFUL"
OR "HELPFUL"



1,376
STUDENT
CARE REFERRALS

27% ON-CAMPUS
RESIDENTS
73% OFF-CAMPUS
RESIDENTS

REFERRAL TYPES

- STAFF (705)
- FACULTY (556)
- STUDENTS (56)
- GVPD (41)
- COMMUNITY MEMBER (8)

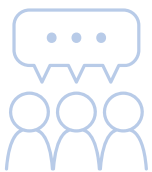
TOP CONCERNS

- #1 MENTAL HEALTH - 23.6%
- #2 DISTRESSED BEHAVIOR - 12.35%
- #3 MEDICAL - 10.25%
- #4 FAMILY CONCERNS/DEATH OF FAMILY - 10.17%
- #5 PERSONAL WELL-BEING/SAFETY - 6.61%

5,500+
OFF-CAMPUS STUDENTS IN
ISOLATION/QUARANTINE
WERE CONTACTED AND
OFFERED RESOURCES



11
VICE PROVOST
ADVISORY
BOARD
MEMBERS



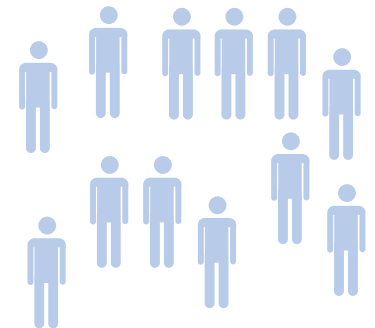
84
TOTAL MEALS
PROVIDED TO
STUDENTS IN
LAKER MEAL
SHARE PROGRAM



193 STUDENT
DONATIONS

30 DEAN OF STUDENTS
DONATIONS

190
STUDENTS
UTILIZED
OMBUDS
SERVICES



19%
FIRST YEAR
STUDENTS

58%
WHITE
STUDENTS

63%
FEMALE

34%
MALE

34%
RACIAL/
ETHNIC
MINORITIES

TOP STUDENT CONCERNS

- EVALUATIVE RELATIONS (FACULTY/EMPLOYEE)
- SAFETY, HEALTH, ENVIRONMENT
- VALUES, ETHICS, & STANDARDS
- PEER RELATIONSHIPS

DATA FOR 2020-2021 WAS IMPACTED BY COVID-19 AND MAY NOT REPRESENT TYPICAL PROGRAM STATISTICS