



# Emergency Action Procedure Soccer Stadium

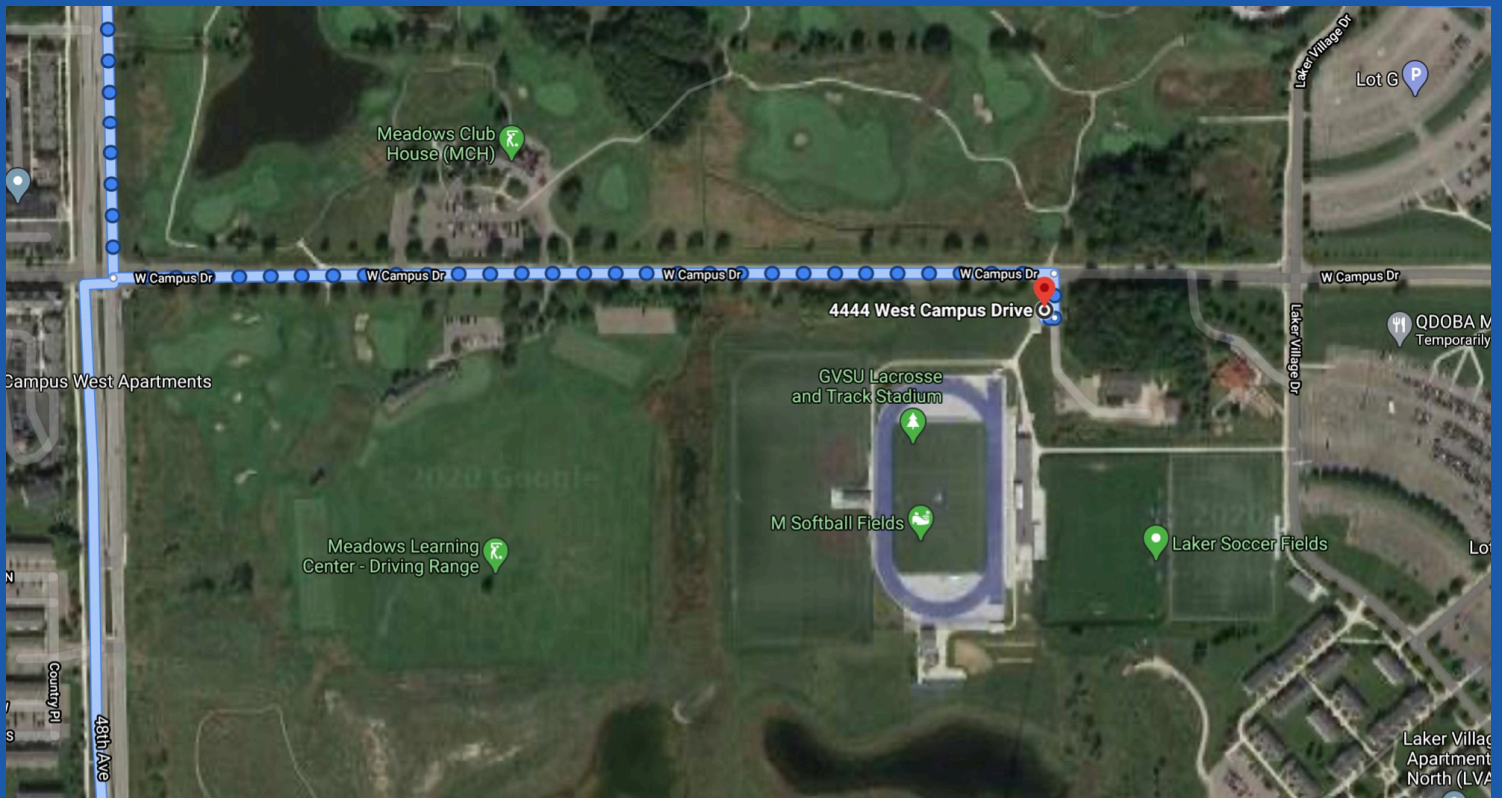
**4444 W. CAMPUS DRIVE ALLENDALE, MI 49401**

## **EMS ACCESS POINT:**

**MEADOWS MAINTENANCE DRIVE, GATE NORTHWEST CORNER OF  
FIELD (Q KEY NEEDED)**

## **NEAREST AED:**

**WALL MOUNTED UNIT IN SOUTH COMPLEX BUILDING ICE ROOM**



## **IMPORTANT PHONE NUMBERS:**

**GVPD CAMPUS DISPATCH: (616) 331-3255**

**OTTAWA COUNTY NON-EMERGENCY: (800) 249-0911**