



# Emergency Action Procedure Golf Indoor Facility

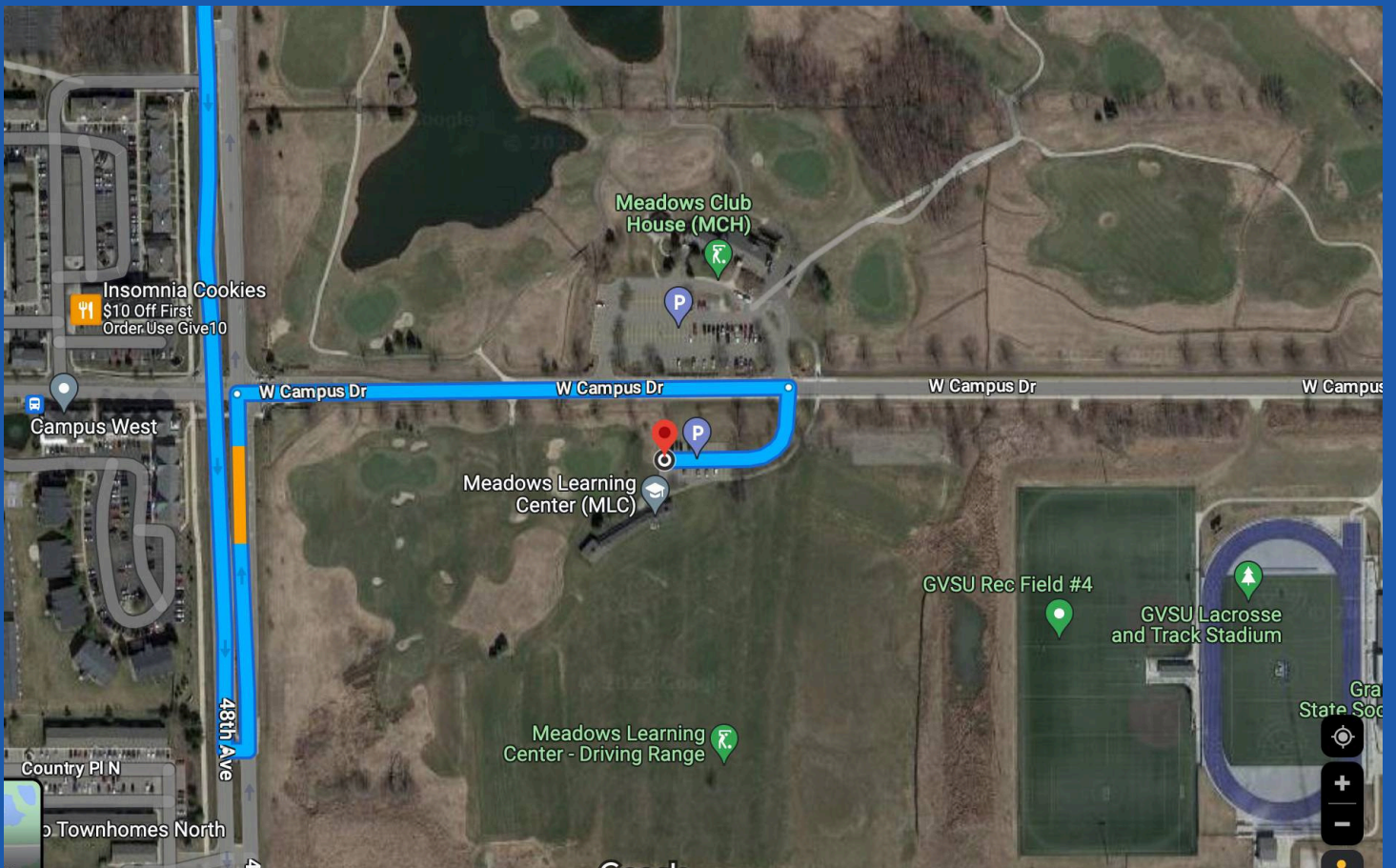
**4680 W. CAMPUS DRIVE ALLENDALE, MI 49401**

## **EMS ACCESS POINT:**

**PARKING LOT ACROSS FROM THE MEADOWS GOLF COURSE NEAR  
PUTTING GREEN**

## **NEAREST AED:**

**WALL MOUNTED UNIT NEXT TO PUTTING GREEN**



## **IMPORTANT PHONE NUMBERS:**

**GVPD CAMPUS DISPATCH: (616) 331-3255**

**OTTAWA COUNTY NON-EMERGENCY: (800) 249-0911**