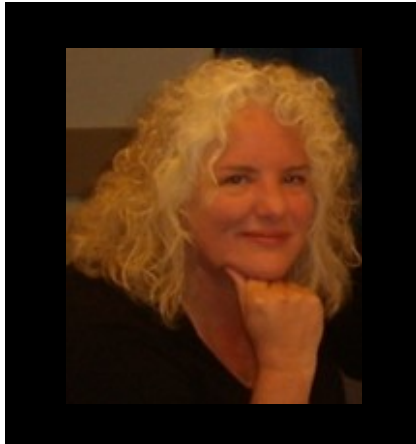


Dr. Joan Borst is an Associate Professor in the School of Social Work at Grand Valley State University in Grand Rapids, Michigan. Dr. Borst has traveled to Ireland for over 15 years accompanying social work students and professionals introducing them to the people, culture and social services in Ireland.



Dr. Borst is particularly interested in health related areas of social service and has contacts in many other areas of social work including: substance abuse, families and children, politics and counseling.

Grand Valley State University School of Social Work is an approved provider with the Michigan Social Work Continuing Education Collaborative-Provider MICEC-0004. This program is approved for 45.0 hours.

Register at <http://www.gvsu.edu/swce/>



For more information about traveling and activities please contact :
Dr. Joan Borst
borstj@gvsu.edu (Preferred)
Phone: 616-331-6581
377C Richard M DeVos Center

For more information on costs please contact:
Leslie Bateman
batemanl@gvsu.edu (Preferred)
Phone: 616-331-7180



Continuing Education for Social Workers in Ireland 2018

August 4—15, 2018

**In addition, a mandatory
orientation session will
take place on July 14, 2018**



**Earn all professional social
work continuing education
clock hours for Michigan
Social Workers, including
ethics and pain management**

Ireland is a geographically diverse country and offers visitors a variety of beautiful scenery as



they travel from Dublin, the busy capital, on the east coast to the stunning west coast with the Connemara region, the Aran Islands and the Burren.



This course offering in Ireland is an opportunity to meet the culture, beauty and people of Ireland.



Your program includes...

- Lodging in Dublin, Galway, Tullycross and Lisdoonvarna
- Experienced guide
- Some meals: "Welcome" dinner, some continental breakfasts and a "Farewell" dinner
- Transportation to Shannon airport on the morning of August 15.
- All ground transportation
- Scheduled opportunities to meet with social workers and presenters at local sites
- 45 Michigan Social Work CE Clock Hours included (valued at over \$700)



Travel and fees for travel to Irish tour sites

including:

- The Cliffs of Moher
- Inishmoore
- Kylemore Abbey
- Trinity College
- The Burren
- Dublin Immersion Tour



Orientation Meeting

July 14, 2018 9:00am-2:00pm
GVSU DeVos Building on Fulton
to discuss the course, answer questions
and begin to earn your clock hours.



COST \$2,495; based on double occupancy
roommates will be determined during orientation unless
a specific request has been made

- Participants are responsible for purchase of their own airline tickets and are free to arrive in Ireland early and/or stay later.
- Participants will meet at the Dublin hotel on August 4, 2018.
- The cost for a participant wishing an individual, single room is \$3,495

Register at <http://www.gvsu.edu/swce/>