

Embrace Strategies for Leadership and Wellness

Curriculum: MiTEAM Principles: Effective supervision and mentoring



Date/time: Friday, December 5, 2025 • Program 8:45 AM – 12:00 PM (ET)

Location: Live synchronous training via Zoom

Social Work CECHs: 3 hours • Approved #MICEC-0004

Cost: Free to all MDHHS and private agency child welfare workers; \$59 all others

Presenter: Elisa Ortega-Schultz, MS, MA, LMSW

Beginning skill level

Target audience: Workers and supervisors in:

- ✓ Family Preservation
- ✓ Children's Protective Services
- ✓ Foster Care
- ✓ Adoption

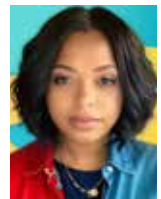
Training objectives: As a result of this training, participants will be prepared to:

- Increase self-awareness through a variety of reflection practices.
- Identify practical takeaways to implement into daily routine and practice.
- Provide a framework for cultivating emotional intelligence.

Description: In this training, participants will walk through a reflection exercise to become more aware of their own needs for their wellness and leadership. The focus will be on three core leadership lessons: rest, healing, and growth. Participants can expect to walk away with tangible skills to cultivate their emotional wellness in an effort to become a heart-centered leader.

Sharpening Assessment Skills, How to Recognize Signs/Symptoms, When to Make a Referral for SUD services

Curriculum: Substance abuse: Sharpening assessment skills, how to recognize signs/symptoms, when to make a referral for SUD services



Date/time: Friday, February 27, 2026 • Program 8:45 AM – 12:00 PM (ET)

Location: Live synchronous training via Zoom

Social Work CECHs: 3 hours • Approved #MICEC-0004

Cost: Free to all MDHHS and private agency child welfare workers; \$59 all others

Presenter: Brandi Berry, LLMSW

Beginning skill level

Target audience: Workers and supervisors in:

- ✓ Family Preservation
- ✓ Children's Protective Services
- ✓ Foster Care
- ✓ Adoption

Training objectives: As a result of this training, participants will be prepared to:

- Identify two components regarding the epidemiology of SUD in families, with a focus on pregnant and breastfeeding persons.
- Describe three ways that women who use drugs (particularly pregnant and parenting persons) are stigmatized and discuss the role of language and stigmatization.
- List three harm reduction and trauma-informed care practices to engage persons with SUD more effectively and sensitively.

Description: This training will focus on substance use disorders (SUD) in families. Learners will hear about the epidemiology of SUD in families with a focus on the stigma towards pregnant and parenting persons and use of appropriate language, harm reduction practices and trauma-informed care, and the treatment of SUD in pregnant and breastfeeding persons.

How to register: Visit www.gvsu.edu/swce.

Contact: Lauren Fodor

Phone: 616-331-7180

Email: learn@gvsu.edu