

SUPPORTED BY



NOW available free of charge to family preservation workers and supervisors of MDHHS-contracted private agencies!

Most trainings in this catalog are offered online!

2023-2024 Child Welfare In-Service Training

for the Michigan Department of Health and Human Services and MDHHS-Contracted Private Agencies

ALL trainings in this catalog are approved by the MDHHS for in-service training hours

Delivered by Michigan Graduate Schools of Social Work

OFFERING SOCIAL WORK CONTINUING EDUCATION CREDIT HOURS



School of Social Work MICHIGAN STATE UNIVERSITY



Contents

- 3 Introduction
- 4 FAQs
- 5 Andrews University
- 6 Eastern Michigan University
- 7 Grand Valley State University
- 8–9 Michigan State University
- 10 Northern Michigan University
- 11 Saginaw Valley State University
- 12 Spring Arbor University
- 13 University of Michigan
- 14 Wayne State University
- 15–18 Webinars
- 19 On-Demand Training Courses
- 20–23 Previously recorded live webinars, accessible on-demand online offered by Michigan State University
- 24–25 Calendar of Trainings

Schools of Social Work

Andrews University
Eastern Michigan University
Ferris State University
Grand Valley State University
Madonna University
Michigan State University
Northern Michigan University
Saginaw Valley State University
Spring Arbor University
University of Michigan
Wayne State University
Western Michigan University

Introduction

Given the challenges of the work and the importance of the outcomes—the well-being and safety of children and families—a well-trained child welfare workforce is essential. That knowledge acquisition and skill development began in colleges and universities, was focused through pre-service training, and is continued and deepened through in-service training. We are proud to offer these courses for your consideration and participation in your ongoing professional development.

Our mission is clear and important: the schools of social work partnering to provide in-service training that aims to serve Michigan children and families by strengthening the child welfare workforce.

We value:

1. **Anti-racism.** We promote training that advances anti-racist child welfare practice and encourages respect for diversity, equity, and inclusion.
2. **Collaboration.** We value partnerships and working together with the Michigan Department of Health and Human Services (MDHHS), private agencies, and social work education programs.
3. **Quality.** We are committed to high quality, relevant, and up-to-date training topics and teaching methods.
4. **Responsiveness.** We listen to our partners and participants and value feedback to adapt to the training needs of the workforce.
5. **Accessibility.** We want our training to be readily available and affordable across the state of Michigan.

“Child welfare isn’t rocket science. It is harder.”

—David Liederman, former director of the Child Welfare League of America

We are pleased to present this in-service training catalog—the product of this dynamic partnership between MDHHS and the 12 Michigan graduate social work programs. We appreciate the commitment and support of MDHHS Director Elizabeth Hertel and her Children’s Services Administration leadership team led by Senior Deputy Director Demetrius Starling. A special thanks to the MDHHS training team led by Dr. Stacie Gibson and including Laura Schneider and Meon Stubbs.

Each training is supported by a school of social work. Questions about individual trainings should be directed to the sponsoring school. With the support of MDHHS, we are able to offer these sessions free of charge. Each training is approved for social work continuing education credit hours. We encourage all Children’s Protective Services, foster care, adoption, residential care, and prevention services professionals and their supervisors to enroll.

Thank you for your interest and support.

Gary R. Anderson, PhD, MSW, Professor
Kadi M. Prout, LMSW, In-Service Project Manager
Michigan State University School of Social Work

These child welfare trainings are offered **FREE OF CHARGE** for MDHHS child welfare and family preservation workers and supervisors and MDHHS-contracted private agencies’ child welfare and family preservation workers and supervisors on a **FIRST COME, FIRST SERVE BASIS.**

REGISTRATION for each training will close once the 35-person capacity has been reached.

If you register and know in advance you cannot attend, you must contact the university so your slot can be offered to another individual.

This Child Welfare In-Service Training initiative was made possible through a grant from the Michigan Department of Health and Human Services.



FAQs

1 As a child welfare worker or supervisor, how many in-service training hours do I need to complete? All public and private child welfare staff are required to complete 32 hours of in-service training each calendar year (January through December). This includes caseload carrying and other child welfare staff with specialized and supportive positions to CPS, foster care, and adoption. Additionally, child welfare supervisors are required to obtain 16 hours of in-service training each fiscal year.

2 How do I record these in-service training hours to show that I am meeting this requirement? Add the training to the Michigan Department of Health and Human Services (MDHHS) Learning Management System (LMS) as external training. Your supervisor will receive an email to approve it to be added to your transcript.

3 I see that each training in this catalog has a curriculum reference. What does this mean? Child welfare and family preservation workers have the opportunity to attend training each year that is based upon a curriculum developed in partnership with the MDHHS Office of Workforce Development and Training and the workforce. Workers should have the opportunity to sit down with their supervisors regularly to assess which trainings would be most beneficial and most relevant to their caseloads so that training progress is pre-planned and helps each worker advance professionally. The LMS website includes a tool called “Create Employee Training Plan CWTI” that can assist with this effort.

4 Do I register to attend the training with the university that is hosting the training or through the MDHHS Learning Management System (LMS)? In order to register to attend a training, you should follow the registration instructions found in this catalog. In order to record your in-service training hours with the MDHHS Office of Workforce Development and Training, please follow the directions found in FAQ 2.

5 Is it true, I can attend any in-service training listed in this catalog for FREE?! Yes! The child welfare in-service trainings provided through this collaborative effort are FREE OF CHARGE for child welfare and family preservation workers and supervisors—both MDHHS and contracted private agencies—on a first come, first serve basis. These trainings are eligible for social work continuing education credit hours, too! Happy training!

In addition to the in-person training listed in this catalog,
webinars are offered through several universities.

See pages 15-18.

Secondary Trauma: Witnessing Trauma, Compassion Fatigue, Burnout, and Self-care

Curriculum: Secondary trauma:

Date/time: Friday, October 13, 2023 • 9:00 AM – 12:15 PM (ET)

Location: Live synchronous training via Zoom

Social Work CECHs: 3 hours • Approval pending

Cost: Free to all MDHHS and private agency child welfare workers:
\$15 for students; \$45 all others

Presenter: Kristen Jones, LMSW



Intermediate skill level

Target audience:

- ✓ Children's Protective Services Workers
- ✓ Foster Care Workers
- ✓ Adoption Workers

Training objectives: As a result of this training, participants will be prepared to:

- Identify secondary trauma, compassion fatigue, and burnout, and recognize when they occur.
- Describe evidence-based techniques to manage secondary trauma (hearing or witnessing others' trauma) in the workplace.
- Create a personalized self-care plan.

Description: Every child welfare employee will experience secondary trauma by witnessing and hearing of their client's own trauma. Secondary trauma can have the same symptoms as PTSD. This training will identify and distinguish between secondary trauma, compassion fatigue, and burnout, and will help participants recognize when they are experiencing these. Participants will learn techniques to protect themselves and manage their own trauma response when learning of their client's trauma. Finally, participants will develop a personalized self-care and trauma protection plan. The instructor will use the Community Resiliency Model by The Trauma Resource Institute as well as other evidence-based theories. This training will utilize role playing, exercises, small and large group discussions, and visual displays.

Preservation: Advocating for Clients

Curriculum: Preservation: Advocating for Clients

Date/time: Friday, January 19, 2024 • 9:00 AM – 12:15 PM (ET)

Location: Live synchronous training via Zoom

Social Work CECHs: 3 hours • Approval pending

Cost: Free to all MDHHS and private agency child welfare workers:
\$15 for students; \$45 all others

Presenter: Faith Shreve, LMSW, CAADC



Intermediate skill level

Target audience:

- ✓ Children's Protective Services Workers
- ✓ Foster Care Workers
- ✓ Adoption Workers

Training objectives: As a result of this training, participants will be prepared to:

- Understand what advocacy is and why it is important in family preservation work.
- Understand strengths-based advocacy and how to identify strengths within a family.
- Understand how to incorporate advocacy and strengths-based practice into case service plans that support family preservation.

Description: Family preservation is a key component of working in the child welfare profession. One of the most important things to consider in family preservation is how to advocate for clients. In this training, we will discover why advocacy for clients is important and how to use strengths-based practice to identify areas where the families are doing well and areas they may need more support and help. We will also discuss best practices for advocacy and how to build relationships with other service providers to help increase family preservation and advocate for clients. Participants will be able to practice the skills needed in advocating for clients to produce the best possible outcomes for the families. This training will utilize exercises, small and large group discussions, and visual displays.

How to register: Go to www.andrews.edu/cas/socialwork/continuing and click on the link provided.

Contact: Panankosi Mbutjwa Email: panambunjwa@yahoo.com Phone: 808-987-8119

Website: www.andrews.edu/socialwork/continuing; click on the link provided.

Supporting Kids and Adolescents with Autism Spectrum Disorders: Understanding and Advocating for Effective Strategies in the School Environment

Curriculum: Educational opportunities: Navigating the special education system for children with disabilities

Date/time: Friday, November 3, 2023 • 9:00 AM – 12:15 PM (ET)

Location: Live synchronous training via Zoom

Social Work CECHs: 3 hours • Approval #MICEC-0031

Cost: Free to all MDHHS and private agency child welfare workers; \$50 all others

Presenter: Christina Marsack-Topolewski, PhD, LMSW



Beginning and intermediate skill levels

Target audience:

- ✓ Family Preservation Workers
- ✓ Children's Protective Services Workers
- ✓ Foster Care Workers
- ✓ Adoption Workers

Training objectives: As a result of this training, participants will be prepared to:

- Articulate the continuum of characteristics, symptoms, and behaviors associated with autism spectrum disorders.
- Articulate strategies and techniques to support individuals with autism spectrum disorders in a variety of settings (e.g., school, home, work, social setting).
- Develop an understanding of behavior supports and how to recognize and identify the A, B, C (e.g., antecedent, behavior, consequence of the behavior) associated with behavior.

Description: This training will provide a foundation on autism spectrum disorder (ASD) and the continuum in which this disorder manifests, specifically focusing on adolescents and young adults. Due to the complexity and co-morbidity often associated with ASD, techniques and strategies to anticipate, analyze, and provide solutions to address complex behaviors, including creating behavior plans, self-monitoring systems, and visual schedules, will be outcomes of this training. Other tools such as using peer supports will be discussed and their benefits for individuals with ASD and supporting peers. This training will also provide a lens to understand the myriad of challenges faced by parents and opportunities to support them. This training will utilize exercises, small and large group discussions, and visual displays.

Infant Mental Health: Supporting the Relational Needs of Infants and Toddlers in Foster Care

Curriculum: Mental and behavioral health: Infant mental health, the importance of bonding

Date/time: Thursday, February 8, 2024 • 9:00 AM – 12:15 PM (ET)

Location: Live synchronous training via Zoom

Social Work CECHs: 3 hours • Approval #MICEC-0031

Cost: Free to all MDHHS and private agency child welfare workers; \$50 all others

Presenter: Sarah E. Shea, PhD, LMSW, IECMH-E®



Intermediate skill level

Target audience:

- ✓ Family Preservation Workers
- ✓ Foster Care Workers
- ✓ Adoption Workers

Training objectives: As a result of this training, participants will be prepared to:

- Describe the impacts of foster care experiences on infant and toddler social-emotional development.
- Identify the relational needs of infants and toddlers in foster care.
- Utilize reflective functioning skills to support the relational needs of infants and toddlers in foster care.

Description: This training will describe the impacts of foster care on infant and toddler social-emotional development with particular attention to the impacts on infant/toddlers' relationships with caregivers. The unique relational needs of children ages 0-3 in foster care will be identified in light of trauma exposure, separation, loss, and grief. Child welfare professionals will learn about reflective functioning, the capacity to understand one's own thoughts and feelings and the thoughts and feelings of another, and strategies for supporting the reflective functioning of the adults providing care for infants and toddlers in foster care. This training will utilize exercises, small and large group discussion, and visual displays.

How to register: November 3: <https://forms.gle/nw1uK9SPietdodLD6>

February 8: <https://forms.gle/2o2d6iC3yH2TWUQL6>

Phone: 734-487-4429

Email: emu_socialworkce@emich.edu

Current Trends in Adolescent Substance Use, Treatment, and Risk Mitigation

Curriculum: Substance abuse: Sharpening assessment skills and how to recognize signs/symptoms

Date/time: **Friday, September 15, 2023** • Program 8:45 AM – 12:00 PM (ET)

Location: **GVSU Pew Campus**, 201 Front Avenue SW, Grand Rapids, MI 49504

Social Work CECHs: 3 hours • Approval #MICEC-0004

Cost: Free to all MDHHS and private agency child welfare workers; \$49 all others

Presenter: **James Sherrill, MCS/MHC, CAADC, LPC**



Beginning skill level

Target audience:

- ✓ Family Preservation Workers
- ✓ Children's Protective Services Workers
- ✓ Foster Care Workers
- ✓ Adoption Workers

Training objectives: As a result of this training, participants will be prepared to:

- Identify and understand current data on adolescent substance use.
- Identify currently accepted risk mitigation and treatment strategies for combating the negative effects of adolescent substance use.
- Review treatment options common to Michigan child welfare workers to aid in addressing adolescent substance use.

Description: This training will review current data on substance use in older children through adolescents. Current accepted treatment modalities will be explored, and outcome data will be evaluated through interactions with child welfare organizations, courts, juvenile justice workers, law enforcement, and mental health/substance use disorder clinicians. This training will utilize small and large group discussions and visual displays.

Growing Attachment Through a Play-based Lens

Curriculum: Mental and behavioral health: Health and wellness needs of youth in foster care

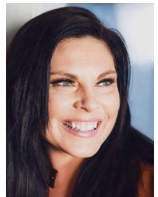
Date/time: **Friday, November 3, 2023** • Program 8:45 AM – 12:00 PM (ET)

Location: **GVSU Pew Campus**, 201 Front Avenue SW, Grand Rapids, MI 49504

Social Work CECHs: 3 hours • Approval #MICEC-0004

Cost: Free to all MDHHS and private agency child welfare workers; \$49 all others

Presenter: **Jacqueline Scherer, LMSW**



Beginning skill level

Target audience:

- ✓ Family Preservation Workers
- ✓ Children's Protective Services Workers
- ✓ Foster Care Workers
- ✓ Adoption Workers

Training objectives: As a result of this training, participants will be prepared to:

- Identify two ways that attachment impacts brain development.
- Identify five areas through which intentional play builds attachment.
- Explore ten tools used in play-based therapy that support the growth of attachment.

Description: This will be a hands-on and interactive training. Together, we will learn how attachment impacts brain development. Additionally, strategies and tools to support the growth of attachment through intentional play will be shared. Using growth attachment strategies through intentional play, children, families, and their natural supports will experience an increase in stability, safety, and love. This training will utilize exercises, small and large group discussions, and visual displays.

How to register: Visit www.gvsu.edu/swce

Contact: Lucas Treadwell

Phone: 616-331-7180

Email: learn@gvsu.edu



Motivational Interviewing: Beyond the Basics

Curriculum: Preservation: Using evidence-based services in the home

Date/time: **Thursday, October 5, 2023** • Program 9:00 AM – 12:15 PM (ET)

Location: **Live synchronous training via Zoom**

Social Work CECHs: 3 hours • Approval #MICEC-0001

Cost: Free to all MDHHS and private agency child welfare workers;
all others check online for pricing

Presenter: **Bernard Showers, DSW, LCSW**



Intermediate skill level

Target audience:

- ✓ Family Preservation Workers
- ✓ Children's Protective Services Workers
- ✓ Foster Care Workers
- ✓ Adoption Workers

Training objectives: As a result of this training, participants will be prepared to:

- Understand how motivational interviewing's emphasis on change talk makes it unique.
- Identify the four processes of motivational interviewing—engagement, focusing, evoking, and planning.
- Recognize change talk and effectively respond in a way that evokes additional change language.

Description: This training will target clinicians seeking an intermediate level of motivational interviewing (MI) training. The learner will consider MI's application to a broad use of behavior changes, ranging from health behaviors to substance use. The training is comprised of a largely didactic model. Learners will leave with an enhanced knowledge of tangible clinical interventions to be utilized with clients, targeting collaboratively identified problem behaviors. Participants will learn how MI's emphasis on change talk makes it unique. Participants will learn tangible skills for eliciting change talk with their clients, helping them to gain and enhance motivation toward making meaningful behavioral changes. This training will utilize large group discussion and visual displays.

Compassionate Grief: Healing into a New Sense of Self

Curriculum: Trauma and crisis management

Date/time: **Thursday, November 9, 2023** • Program 9:00 AM – 12:15 PM (ET)

Location: **Live synchronous training via Zoom**

Social Work CECHs: 3 hours • Approval #MICEC-0001

Cost: Free to all MDHHS and private agency child welfare workers;
all others check online for pricing

Presenter: **Ginny Witte, PhD**



Beginning skill level

Target audience:

- ✓ Family Preservation Workers
- ✓ Children's Protective Services Workers
- ✓ Foster Care Workers
- ✓ Adoption Workers

Training objectives: As a result of this training, participants will be prepared to:

- Describe the differences between acute and prolonged or complicated grief.
- Explain the effects of grief in the brain, the nervous system, and on our biology.
- Identify and apply three practices used to help individuals begin remapping their nervous system and healing.

Description: Grief can be one of the greatest life stressors we face. Grief can be complicated, a shock to our system, and keep us stuck. Moving forward and healing from grief is challenging at the least and seems impossible for some. Recent research on the effects of grief on our physiology, biology, and psychology can help us better understand how to support and guide individuals through the healing process. In this training, we will explore what science tells us about grief's effect on the brain, on our immune system, and on adjusting to this life change. How does the mind adapt to grief? How can we use cognitive and somatic work to move forward and adjust to loss? Those we love are integrated into our sense of self. When we lose someone dear to us, we naturally feel a loss of self. We will explore both the science of grief and go through practices that help us reduce the functional impairment of grief and move forward, essentially remapping our nervous system to a new sense of self. This training will utilize large group discussion and visual displays.



Trauma Informed Teams

Curriculum: Secondary trauma

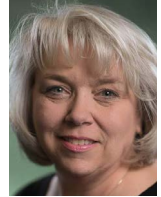
Date/time: **Thursday, December 14, 2023** • Program 10:00 AM – 12:15 PM (ET)

Location: **Live synchronous training via Zoom**

Social Work CECHs: 2 hours • Approval #MICEC-0001

Cost: Free to all MDHHS and private agency child welfare workers;
all others check online for pricing

Presenter: **Cheryl Williams-Hecksel, LMSW, ACSW**



Beginning, intermediate, and advanced skill levels

Target audience:

- ✓ **Family Preservation Workers**
- ✓ **Children's Protective Services Workers**
- ✓ **Foster Care Workers**
- ✓ **Adoption Workers**

Training objectives: As a result of this training, participants will be prepared to:

- Explore the importance of belonging to strong and positive teams as a tool to manage secondary traumatic stress and vicarious trauma.
- Assess the strengths and needs of teams as they relate to promoting resilience for team members and the organization.
- Identify strategies that can be used within teams to develop resilience, well-being, and satisfaction with work.

Description: Relationships with colleagues and the teams that we belong to can be significant resources for managing secondary traumatic stress and vicarious trauma. This training will explore strategies for building and using teams as a tool to build resilience, well-being, and compassion to bolster worker success and ultimately contribute to positive outcomes for those we serve. This training will utilize large group discussion and visual displays.



How to register for online training: <https://www.eventbrite.com/o/msu-school-of-social-work-44929438833>

Contact: Gina Tremonti Gembel, MSW

Phone: 517-353-3060

Email: swkce@msu.edu



NORTHERN MICHIGAN
UNIVERSITY

Sharpening Assessment Skills: Tools and Strategies to Recognize Signs/Symptoms of Substance Use Disorder

Curriculum: Substance abuse

Date/time: Friday, November 10, 2023 • Program 10:00 AM – 1:15 PM (ET)

Location: Live synchronous training via Zoom

Social Work CECHs: 3 hours • Approval #MICEC-0044

Cost: Free to all MDHHS and private agency child welfare workers; free for students; \$40 all others

Presenter: **Elissa Kent, LMSW, CAADC, CCS, ADS-RT**



Beginning skill level

Target audience:

- ✓ Family Preservation Workers
- ✓ Children's Protective Services Workers
- ✓ Foster Care Workers
- ✓ Adoption Workers

Training objectives: As a result of this training, participants will be prepared to:

- Identify signs and symptoms of substance use.
- Recognize the difference between problematic use and nonproblematic use.
- Use an anti-oppressive, anti-racist approach while interacting with individuals with substance use disorder (SUD).

Description: This training will discuss the signs and symptoms of substance use and SUD. The trainer will discuss the differences between problematic and nonproblematic use as it relates to the child welfare system. This training will emphasize the treatment of individuals experiencing substance use from an anti-oppressive framework. Participants will be able to apply the skills learned in small group discussion. This training will utilize exercises, small and large group discussions, and visual displays.

Youth Mental Health: Supporting Resilience in Adversity

Curriculum: Mental and behavioral health: Understanding emotional and mental health concerns of youth

Date/time: Friday, February 9, 2024 • Program 10:00 AM – 1:15 PM (ET)

Location: Live synchronous training via Zoom

Social Work CECHs: 3 hours • Approval #MICEC-0044

Cost: Free to all MDHHS and private agency child welfare workers; free for students; \$40 all others

Presenter: **Sarah Carlson, LMSW**



Beginning skill level

Target audience:

- ✓ Family Preservation Workers
- ✓ Children's Protective Services Workers
- ✓ Foster Care Workers
- ✓ Adoption Workers

Training objectives: As a result of this training, participants will be prepared to:

- Identify a range of mental health disorders and associated outcomes commonly experienced by youth involved in the child welfare system.
- Articulate risks of negative health outcomes for youth related to adverse environmental factors, including trauma, systemic racism, and other adverse experiences.
- Activate at least two strategies to mitigate the risks associated with adverse environmental factors and youth mental illness and increase resiliency outcomes for youth.

Description: This training will present an overview of mental health and behavioral issues commonly seen in youth, particularly those served in the child welfare system. Participants will learn to contextualize common concerning behaviors in youth as (a) symptoms of mental health disorders and (b) responses to environmental stressors, including trauma, systemic oppression, and other adverse experiences. Beyond building awareness of the symptoms and causes of mental health and behavior issues in youth, participants will explore both risk and protective factors that influence short- and long-term resiliency and develop strategies to support youth, with the goal of building resiliency. This training will utilize exercises, small and large group discussions, and visual displays.

How to register: Online at <https://nmu.edu/continuingeducation/>

Contact: Megan Nowicki, Program Specialist Phone: 906-227-2144 Email: mewales@nmu.edu

Website: <https://www.socialworkceec.com/face-to-face-courses>

Culturally Sensitive Practice for LGBTQ Youth and Their Families

Curriculum: Cultural humility/cultural competence: Supporting LGBTQ youth



Date/time: Friday, December 8, 2023 • Program 12:30 PM – 3:45 PM (ET)
Location: Live synchronous training via Zoom
Social Work CECHs: 3 hours • Approval pending
Cost: Free to all MDHHS and private agency child welfare workers
Presenter: Mark Giesler, PhD, LMSW

Beginning skill level

Target audience:

- ✓ Family Preservation Workers
- ✓ Children's Protective Services Workers
- ✓ Foster Care Workers
- ✓ Adoption Workers

Training objectives: As a result of this training, participants will be prepared to:

- Assess and manage their preconceived notions and biases about working with LGBTQ youth.
- Enhance their ability to empower families who have children who are on the LGBTQ spectrum.
- Identify resources for families and youth on their caseload who would benefit from further education and networking opportunities regarding LGBTQ youth and families.

Description: Despite the advancement of LGBTQ laws and rights in the last two decades, recent societal trends make coming out and LGBTQ visibility more compromising, especially in more rural areas. Social workers are poised to create safe spaces for this population. Understanding the strengths and challenges of LGBTQ-identified youth, managing their own biases, and creating strategies to ensure an LGBTQ-affirmative practice are more important tasks than ever for workers. In this training, the presenter will first have participants consider biases and preconceived notions that they might bring to this topic. He will then share statistics and current trends related to youth who identify on the LGBTQ spectrum, including strengths and limitations of this population. Next, he will articulate strategies that workers can use to support LGBTQ-identified youth and their families. An effort will be made to parcel out the unique challenges of trans youth in this discussion. Finally, the presenter will identify both national and local resources that workers can access for the families and youth on their caseload. This training will utilize exercises, small and large group discussions, and visual displays.

Exploring Opportunities Through Higher Education

Curriculum: Educational opportunities: Navigating higher education with youth



Date/time: Friday, January 12, 2024 • Program 9:00 AM – 12:15 PM (ET)
Location: Live synchronous training via Zoom
Social Work CECHs: 3 hours • Approval pending
Cost: Free to all MDHHS and private agency child welfare workers
Presenter: Abbigail Stemple, LLMSW

Beginning skill level

Target audience:

- ✓ Family Preservation Workers
- ✓ Children's Protective Services Workers
- ✓ Foster Care Workers
- ✓ Adoption Workers

Training objectives: As a result of this training, participants will be prepared to:

- Guide youth toward exploration of personal and professional interests and connection of those interests to educational opportunities in higher education and future careers.
- Identify barriers to higher education enrollment and program completion.
- Provide support and connect youth to resources while youth pursue higher education completion.

Description: Transitions from high school to continued education and career opportunities can be difficult for youth to navigate. This training will provide information and resources to individuals working with youth approaching high school graduation and exploring opportunities in higher education. Topics covered will include exploring individual identity and interests with youth, navigating barriers to enrollment, persistence toward degree or program completion, and supporting youth as they progress through educational programs while balancing a commitment to both their academics and other personal responsibilities. Participants will be asked to apply information in small group activities and discussions in an effort to enhance skills and develop proficiency around the objectives highlighted above. This training will utilize exercises, small and large group discussions, and visual displays.

How to register: Email Diane Knights at djknight@svsu.edu with training title, your name, email address, and license number if you want to receive CEs.

Synapses, Neurons, and Trauma, Oh My!

Curriculum: Trauma and crisis management: Effects of abuse and neglect on children

Date/time: **Friday, October 13, 2023** • Program 9:00 AM – 12:15 PM (ET)

Location: **Live synchronous training via Zoom**

Social Work CECHs: 3 hours • Approval pending

Cost: Free to all MDHHS and private agency child welfare workers; \$65 all others

Presenter: **Hollie Nash, LMSW**



Beginning and intermediate skill levels

Target audience:

- ✓ Family Preservation Workers
- ✓ Children's Protective Services Workers
- ✓ Foster Care Workers
- ✓ Adoption Workers

Training objectives: As a result of this training, participants will be prepared to:

- Recognize symptoms of trauma in behavior and responses.
- Identify typical development *vs.* development impacted by the trauma of abuse/neglect.
- Implement strategies to assist in helping youth who have experienced the trauma of abuse and neglect cope in a healthy way.

Description: We've all heard it. "They can't sit still!" "They are so naughty!" "What a bad kid!" What society doesn't realize or take the time to understand is, the impact of abuse and neglect lives on in our bodies, minds, and spirits daily. In this training, participants will walk through the impact of abuse and neglect on the adolescent brain and how it impacts a youth's daily life. The trainer will explore the ways in which the youth may thrive and the ways in which they struggle day to day. Participants will also learn strategies to work with these youth and assist in their well-being, building resilience. This training will utilize exercises, small and large group discussions, and visual displays.

What Is Fostering? Techniques for Supporting Foster Parents of Children Who Have Experienced Trauma

Curriculum: Preservation: Family-centered practice and engagement with families; supporting and preserving families; using evidence-based services in the home

Date/time: **Wednesday, November 8, 2023** • Program 9:00 AM – 12:15 PM (ET)

Location: **Live synchronous training via Zoom**

Social Work CECHs: 3 hours • Approval pending

Cost: Free to all MDHHS and private agency child welfare workers; \$65 all others

Presenter: **Nicholas Pollak, LMSW**



Advanced skill level

Target audience:

- ✓ Children's Protective Services Workers
- ✓ Foster Care Workers
- ✓ Adoption Workers

Training objectives: As a result of this training, participants will be prepared to:

- Understand how to educate foster families on trauma-related behaviors.
- Identify biological parent strengths.
- Develop goals with foster families to incorporate bio-parent strengths into their homes.

Description: This training is geared toward foster care workers working with foster children with trauma. The training will help participants learn techniques to teach trauma, create collaboration between the biological and foster families, and utilize the natural parenting strengths of the biological parent. This training will utilize exercises and small and large group discussions.

How to register: <https://www.eventbrite.com/e/synapses-neurons-and-trauma-oh-my-tickets-652347247177>
<https://www.eventbrite.com/e/what-is-fostering-tickets-652276916817?aff=oddtcreator>

Questions: Contact Emily Dixon, LMSW
Phone: 616-558-9618
Email: edixon@arbor.edu

LGBTQIA+ Youth: Recognizing, Responding, and Managing Emotional Pain

Curriculum: Cultural humility/cultural competence: Supporting LGBTQ youth

Date/time: **Friday, January 19, 2024** • Program 9:00 AM – 12:15 PM (ET)

Location: **Live synchronous training via Zoom**

Social Work CECHs: 3 hours • Approved

Cost: Free to all MDHHS and private agency child welfare workers; \$65 all others

Presenter: **Brodie Lobb, LMSW**

Intermediate skill level

Target audience:

- ✓ Children's Protective Services Workers
- ✓ Foster Care Workers
- ✓ Adoption Workers

Training objectives: As a result of this training, participants will be prepared to:

- Identify what a mental disorder is and its prevalence in the United States.
- Describe signs and symptoms of a youth experiencing emotional pain.
- Describe NASW ethical obligation specific to client safety.

Description: Suicide is the second leading cause of death in the United States for youth ages 13-24. According to the National Council on Behavioral Health, youth that identify as LGBTQIA+ are 300% more at risk for attempting suicide and have identified rejection and negative reactions from family and social supports as precipitating factors to causing distress. Suicide and self-harm have been identified as the solutions to address mental, emotional, and social distresses that don't have a perceived solution. Youth engaged in child welfare programs have an increased rate of exposure to trauma and increased risk to engage in behaviors that are harmful. This training will provide an overview of the prevalence of mental health concerns of LGBTQIA+ youth, introduce emotional pain as a concept to consider as a need to manage in treatment, and methods to deliver services in accordance to ethical standards and obligations. This training will utilize small and large group discussions and visual displays.

Transracial Adoptees: Centering the Person in Support

Curriculum: Permanency: Assessment of a pre-adoptive family for permanence

Date/time: **Thursday, February 15, 2024** • Program 9:00 AM – 12:15 PM (ET)

Location: **Live synchronous training via Zoom**

Social Work CECHs: 3 hours • Approved

Cost: Free to all MDHHS and private agency child welfare workers; \$65 all others

Presenter: **Daicia Price, PhD, LMSW**
Chidimma Ozor Commer, LLMSW
Lina Vanegas, MSW



Intermediate skill level

Target audience:

- ✓ Adoption Workers

Training objectives: As a result of this training, participants will be prepared to:

- Define transracial adoption.
- Identify two impacts of transracial adoption on adoptees.
- Identify at least one ethical and practice consideration for permanency placements.

Description: This training is designed to provide an initial overview of transracial adoption, the impacts on adoptees, and ethical and practice considerations for professionals. This training will utilize small and large group discussions and visual displays.

How to register: Visit ssw.umich.edu/r/CEcatalog

Contact: Alia Wesala, LMSW
Email: ssw.conted@umich.edu
Phone: 734-763-5723



Working with and Supporting Transgender Youth

Curriculum: Cultural humility/cultural competence: Supporting LGBTQ youth

Date/time: **Wednesday, October 11, 2023** • Program 1:00 PM – 4:15 PM (ET)

Location: **Live synchronous training via Zoom**

Social Work CECHs: 3 hours • Approval #MICEC-0058

Cost: Free to all MDHHS and private agency child welfare workers;
\$15 students; \$45 all others

Presenter: **Rebecca Gerlach, LMSW, CAADC**



Intermediate skill level

Target audience:

- ✓ Family Preservation Workers
- ✓ Children's Protective Services Workers
- ✓ Foster Care Workers
- ✓ Adoption Workers

Training objectives: As a result of this training, participants will be prepared to:

- Properly support transgender youth.
- Provide appropriate resources to youth and their caregivers.
- Gain knowledge of terminology and be able to assess risk (these youth tend to have much higher rates of suicide).

Description: Trans and gender-questioning youth are an underserved population, and often providers are not given the information and resources needed to work with these youth and their caregivers effectively. This training aims to equip child welfare workers with the tools to better support these youth by providing resources and educating them on risk and protective factors that impact them. By taking this training, you can increase your awareness and ability to help. We will incorporate both group activities and varying-sized discussions throughout the presentation. This training will utilize small and large group discussions.

All Eyes on Them: Navigating the Special Education Process from an Interdisciplinary Perspective

Curriculum: Educational opportunities

Date/time: **Friday, November 10, 2023** • Program 1:00 PM – 4:15 PM (ET)

Location: **Live synchronous training via Zoom**

Social Work CECHs: 3 hours • Approval #MICEC-0058

Cost: Free to all MDHHS and private agency child welfare workers;
\$15 students; \$45 all others

Presenter: **Alan Johns, LLMSW, MSW**



Beginning skill level

Target audience:

- ✓ Family Preservation Workers
- ✓ Children's Protective Services Workers
- ✓ Foster Care Workers
- ✓ Adoption Workers

Training objectives: As a result of this training, participants will be prepared to:

- Support parents and families in understanding the special education process and other educational supports for children in school.
- Identify the difference between special education and 504 support for children in school.
- Understand the importance of positive collaboration and partnership with the educational system to support your clients toward school success.

Description: This training will discuss the most effective ways to collaborate with school staff to ensure a successful IEP (Individual Education Plan) process. We will cover how to address the unique needs of children, including social-emotional, academic, and medical concerns through appropriate eligibility, services, and accommodations in the school setting. Participants will also learn about additional school support services and get an overview of the Special Education and 504 processes. This training will utilize role playing, games, and small group discussion.

How to register: <https://events.wayne.edu/2023/10/11/working-with-and-supporting-transgender-youth-96085/>

How to register: <https://events.wayne.edu/2023/11/10/navigating-the-special-education-process-from-an-interdisciplinary-view-96086/>

Contact: Shantalea Johns, EdD, LMSW

Email: shantalea@wayne.edu

Phone: 313-577-4463

Website: <https://socialwork.wayne.edu/ce>

Webinars

Individuals from around the world can earn CECHs from the convenience of their home, office, or on the go. We offer interactive live presentations on various topics. You will view the one-hour webinar and then will be sent a link to a survey to complete an attendance record, evaluation, and post-test. Pending a passing score of 75% or higher on the post-test, you will be able to download and print a certificate! Webinars allow us to be accessible and to collaborate globally on issues that affect individuals, organizations, and communities throughout the world.

Beginning and intermediate skill levels
Target audience:

- ✓ Family Preservation Workers
- ✓ Children's Protective Services Workers
- ✓ Foster Care Workers
- ✓ Adoption Workers

Placing a Child Transracially

Date/time: Friday, October 27, 2023 • Program 3:00 PM – 4:15 PM (ET)
Social Work CECHs: 1 hour • Approval #MICEC-0001
Presenter: Kelley Hollie, LMSW
Host: Michigan State University • Register at this link:
<https://www.eventbrite.com/o/msu-school-of-social-work-44929438833>



Beginning skill level

Description: Participants will explore why transracial placements are sometimes necessary and things adoptive families or foster families should be aware of in respect to race and culture. Participants will be given tips and strategies to better support families navigating a transracial placement. Participants will also be connected with resources to support their learning and the learning of their clients. This webinar will utilize large group discussion and visual displays.

Secondary Trauma: Addressing Compassion Fatigue Through Resilience

Date/time: Friday, November 3, 2023 • Program 12:00 PM – 1:15 PM (ET)
Social Work CECHs: 1 hour • Approval #MICEC-0001
Presenter: Catherine A. Macomber, PhD, LMSW
Professor of Social Work
Host: Saginaw Valley State University
See page 11 for registration instructions.



Intermediate skill level

Description: Helping professionals are exposed to the trauma experienced by the vulnerable populations they serve. Compassion fatigue can be one of the outcomes of the work of helping professionals. This training will focus on the development of resilience to combat compassion fatigue and will help participants identify ways they can build resilience in their daily practice. This topic revolves around self-care in helping professions and requires attention to issues of diversity and implicit bias. Participants will be asked to “pay forward” the knowledge gained in this training to future professionals who choose to engage in this important work. This training will utilize exercises, small and large group discussions, and visual displays.

Webinars

Introduction to Forensic Interviewing

Date/time: Thursday, November 16, 2023 • Program 12:00 PM – 1:15 PM (ET)
Social Work CECHs: 1 hour • Approval #MICEC-0001
Presenters: **Julie Knop, MSW, MFI**
Director, Child Abuse Training Unit, Prosecuting Attorneys
Association of Michigan
Megan Aukerman, MSW
Host: **Michigan State University** • Register at this link:
<https://www.eventbrite.com/o/msu-school-of-social-work-44929438833>



Beginning skill level

Description: In this webinar, participants will be introduced to the State of Michigan Forensic Interviewing Protocol. You will learn about the state policy that governs the Forensic Interviewing Protocol. You will learn about the history of the protocol, when the protocol is used, linguistics in relation to the protocol, as well as a brief review of the eight Forensic Interview Protocol phases. In addition, you will have the opportunity to gain skills that you can use in practice. This webinar will utilize exercises, large group discussion, and visual displays.

Introduction to Non-violent Communication

Date/time: Friday, November 17, 2023 • Program 12:00 PM – 1:15 PM (ET)
Social Work CECHs: 1 hour • Approval #MICEC-0001
Presenter: **Krista Rowe, CFT**
Director, Diversity, Equity and Inclusion, and Belonging, Eventgarde Certified
Technology of Participation (ToP) Facilitator (CTF)
Host: **Michigan State University** • Register at this link:
<https://www.eventbrite.com/o/msu-school-of-social-work-44929438833>



Beginning skill level

Description: Conflict is a healthy and inevitable part of personal and professional relationships. Conflict often arises because of breakdowns in communication, expectations (both spoken and unspoken), and trust. While many might prefer avoiding conflict altogether, it only manages to “pop-up” in unexpected ways at later times. Left unaddressed, it can have a negative and lasting impact on both relationships and outcomes. This is especially true when having difficult conversations around race and power. Non-violent communication (NVC) uses a four-part guide as part of its conflict resolution philosophy that is used to address conflict in a productive and transparent way. This webinar will introduce the model of NVC, review the four-part process, and identify opportunities to practice its application as a method for conflict resolution. This webinar will utilize exercises and large group discussion.

Webinars

Understanding Social Identity and Implicit Bias in Social Work

Date/time: Monday, December 4, 2023 • Program 12:00 PM – 1:15 PM (ET)
Social Work CECHs: 1 hour • Approval #MICEC-0001
Presenter: **Gina Tremonti Gembel MSW**
Director of Continuing Education, School of Social Work, Michigan State University
Host: **Michigan State University** • Register at this link:
<https://www.eventbrite.com/o/msu-school-of-social-work-44929438833>



Beginning skill level

Description: Social identity is a person's sense of who they are based on their group membership(s) (e.g., social class and family status). Groups give us a sense of social identity—a sense of belonging to the social world. Implicit bias is when we have attitudes or stereotypes about groups automatically and unintentionally. In this training, we will focus on our own social identities, types of implicit bias, and how both may impact social work practice. Together, participants will reflect on how to address these concepts that contribute to a thriving, more connected environment. This webinar will utilize exercises, large group discussion, and visual displays.

Child Brains and Trauma: How ACEs May Predict Development

Date/time: Friday, December 15, 2023 • Program 12:00 PM – 1:15 PM (ET)
Social Work CECHs: 1 hour • Approval #MICEC-0001
Presenter: **Julie Knop, MSW, MFI**
Director, Child Abuse Training Unit, Prosecuting Attorneys Association of Michigan
Megan Aukerman, MSW
Host: **Michigan State University** • Register at this link:
<https://www.eventbrite.com/o/msu-school-of-social-work-44929438833>



Beginning skill level

Description: Children who experience adverse events in childhood have a higher rate of developing multiple issues later in life, including health issues, development and behavior issues, and mental health issues. Varying levels of abuse or negative situations alter the way a child's brain develops. Participants will learn about ACEs (Adverse Childhood Experiences), which are potentially traumatic events that occur in childhood, and how they may manifest into adulthood. This webinar will utilize large group discussion and visual displays.

Webinars

Identifying Anti-Racist Behaviors in Child Welfare Practices

Date/time: **Thursday, February 15, 2024** • Program 3:00 PM – 4:15 PM (ET)

Social Work CECHs: 1 hour • Approval #MICEC-0058

Presenter: **Megan Hicks, PhD, MS**

Assistant Professor, School of Social Work, Wayne State University

Host: **Wayne State University** • Register at this link:

<https://events.wayne.edu/2024/02/15/identifying-anti-racist-behaviors-in-child-welfare-practices-96088/>



Intermediate skill level

Description: Identifying anti-racism in child welfare practice is crucial. It strives to eliminate discrimination and racism while breaking down systemic barriers that cause inequality and harm to marginalized communities. When implemented in child welfare practice, anti-racism promotes fairness, cultural understanding, the ability to challenge biases and stereotypes, empowerment and self-determination, and trauma-informed care. This webinar will help child welfare workers gain a deeper understanding of how to incorporate anti-racism into child welfare practice and apply these principles in everyday life. This webinar will utilize exercises, small and large group discussions, and visual displays.

Crisis Management: Safety Planning with a Family in Crisis

Date/time: **Friday, February 23, 2024** • Program 10:00 AM – 11:15 AM (ET)

Social Work CECHs: 1 hour • Approval #MICEC-0001

Presenter: **Caroline Cheng, PhD, MSW**

Assistant Professor, Department of Social Work, Northern Michigan University

Host: **Northern Michigan University** • Register at this link:

https://nmu.edu/continuingeducation/education#accordion_collapse_523



Beginning skill level

Description: This webinar will focus on the delivery of knowledge pertaining to domestic violence and safety protocols for children and their families. Some child protection workers and social workers might experience challenges when working with children and families who experience domestic violence issues. It is hoped that this webinar will help participants to recognize signs of domestic violence as well as evidence-based practice. Finally, effective tools and interventions such as safety planning will be introduced to enrich participants' learning of domestic violence issues. This webinar will utilize video clips, journaling activities, and some group discussion.

On-Demand Training Courses

Now offering FREE online courses! No registration required!

Online courses are recordings of live webinars and can be watched from the convenience of your home, office, or on the go! For each course, you will complete a pre-training evaluation and post-training evaluation. NO CONTINUING EDUCATION CLOCK HOURS (CECHs) are offered for the online courses, which are listed on pages 20–23. To improve your experience, we have created training categories including topics related to caregiving, children and families, substance abuse, supervision, trauma, and more. We offer trainings specific to caregivers, supervisors, and child welfare workers.

To view all course offerings, visit:

<https://socialwork.msu.edu/continuing-ed/online-child-welfare-courses.html>

A few highlighted courses!

Connecting Brain and Behavior

This online course will focus on atypical brain development resulting from exposure to prenatal teratogens and/or prenatal and early childhood chronic trauma. Resulting behavioral, emotional, and social concerns will be explored. Common interventions will be discussed and evaluated through a neurobiological lens.

Dissociative Coping in Traumatized Children

This online course will review the underlying risks leading to dissociative coping in children. Children exposed to traumatic events frequently rely on dissociative strategies to manage intolerable fear or pain. Younger children, in particular, may be vulnerable as their skills of managing stress are limited. Dissociative tendencies are easily misinterpreted by caregivers and professionals as intentional or characterological (i.e., “ignoring me” or “lazy”). Implications for assessing and treating traumatized children will be included.

When Addiction Trumps Relationships: Working with Mothers and Addiction

This online course will present information on the scope of the problem of mothers with substance use disorders and the impact of this problem on children. Common substances of abuse and their impact on biological and behavioral functioning will be discussed. You will learn the impact of addictive processes on the capacity for attachment among mothers with addiction and difficulties with emotion regulation and reward systems. A description of current practices with substance abusing mothers and their children will also be presented.

Previously recorded live webinars, accessible on-demand online through Michigan State University

TARGET AUDIENCE	COURSE #	TRAINING TITLE
Caregiver	336	Caregiver: Advocating for My Child in the School System
Caregiver	354	Caregiver: Understanding the Role of Life Books for Youth in Care
Caregiver	372	Trauma-informed Caregiving (Part 1): Becoming Trauma-informed Parents.
Caregiver	381	Intergenerational Trauma and Our Work with Birth Parents: Understanding the Bridge to Success
Caregiver	200-18	Trauma-informed Caregiving (Part 2): Understanding Neurodevelopment and the Stress Response System
Caregiver	204-18	Trauma-informed Caregiving (Part 3): Practical Parenting Strategies
Caregiver	208-18	Support Services for Transgender and Gender Non-Conforming Children and Families
Caregiver	217-18	Locating the Past and Building the Future
Caregiver	213-19	Doing the Difficult Work (Part 1): How to Develop Effective Relationships with Birth Families
Caregiver	214-19	Doing the Difficult Work (Part 2): How to Develop Effective Relationships with Birth Families
Caregiver	218-19	When Behaviors Prevent School Success: Advocating for Your Child with Emotional or Behavior Problems
Caregiver	224-19	Rearing Resilience: Strategies for Parenting Children with Attachment Trauma (Part 1: Trauma and the Brain)
Caregiver	226-19	Rearing Resilience: Strategies for Parenting Children with Attachment Trauma (Part 2: Creating Connections)
Caregiver	228-19	Rearing Resilience: Strategies for Parenting Children with Attachment Trauma (Part 3: Solutions to Challenging Behavior)
TARGET AUDIENCE	COURSE #	TRAINING TITLE
General/MDHHS	310	Finding and Utilizing Services for Adoptive Families
General/MDHHS	311	Hope and Resilience: Moving Past Secondary Traumatic Stress in Child Welfare Practice
General/MDHHS	312	Suicide Assessment, Management, and Intervention
General/MDHHS	313	Safety Planning
General/MDHHS	314	Effective Courtroom Advocacy
General/MDHHS	315	Children of Parents with a Mental Illness
General/MDHHS	322	Parent-Child Attachment Relationships and the Effects of Attachment Disruption
General/MDHHS	324	Detection and Diagnosis of Substance Use Conditions
General/MDHHS	325	Working with Immigrant Children and Their Families
General/MDHHS	327	The Power of Peer Support for Foster and Adoptive Families
General/MDHHS	328	Creating Safety for Children
General/MDHHS	329	The Kinship Conundrum (and Ways to Address)
General/MDHHS	337	Supporting and Strengthening Early Relationships for Children in the Child Welfare System

Previously recorded live webinars, accessible on-demand online through Michigan State University

TARGET AUDIENCE	COURSE #	TRAINING TITLE
General/MDHHS	340	Positive Parenting with Very Young Children
General/MDHHS	341	Transitioning to Success: Promoting College Access and Support for Youth in Foster Care
General/MDHHS	346	When Addiction Trumps Relationship: Working with Mothers and Addiction
General/MDHHS	347	Working with Families Affected by Substance Abuse
General/MDHHS	348	Improving Child Well-being Through Parenting Partnerships: The Value of Birth Parent and Resource Family Teaming and Collaboration
General/MDHHS	349	Extending the Welcome Mat to Our Newest Americans
General/MDHHS	350	Adoption as an Option for Older Youth
General/MDHHS	352	CBT for Social Anxiety in Children
General/MDHHS	355	Indicators and Trends of Domestic Violence and Intervention Services
General/MDHHS	356	Being the Voice for the Voiceless: Legislative Advocacy for Child Welfare Workers
General/MDHHS	357	Building Safety with Youth Through Understanding SOGIE (Sexual Orientation, Gender Identity, and Expression)
General/MDHHS	358	Through a Baby's Eyes: Foster Care, Parenting Time, and Transitions
General/MDHHS	359	The Healing Breath: Practicing Meditation and Self-care as a Child Welfare Professional
General/MDHHS	362	Your Role in Making Medicaid Happen
General/MDHHS	363	Mindfulness Tools to Combat Secondary Trauma and Build Well-being Among Child Welfare Professionals
General/MDHHS	365	Dissociative Coping in Traumatized Children
General/MDHHS	371	Child Abuse and Neglect: The Signs, Symptoms, and Consequences
General/MDHHS	373	Fetal Alcohol Syndrome Disorder: What You Should Know
General/MDHHS	374	Father Involvement in Functional Family Formulations
General/MDHHS	376	Promoting Health and Wellness for Foster Youth
General/MDHHS	378	Teen Parents in Foster Care
General/MDHHS	382	Engagement, Readiness for Change, and Transition Planning
General/MDHHS	383	Youth Transitioning Out of Foster Care
General/MDHHS	384	Post Adoption Services: Assisting Adoptive Families to Avoid Disruption/Dissolution
General/MDHHS	385	The Welfare of Children with Autism Spectrum Disorders and Their Families
General/MDHHS	386	Understanding and Supporting Adoptive Families
General/MDHHS	387	Accessing Special Education Supports for Children in Foster Care
General/MDHHS	388	Psychological and Emotional Trauma in Children and Its Impact on Adoption/Foster Care and Family Development
General/MDHHS	390	Honoring and Empowering Adolescents

Previously recorded live webinars, accessible on-demand online through Michigan State University

TARGET AUDIENCE	COURSE #	TRAINING TITLE
General/MDHHS	392	Having the Tough Conversations About Race with Your Clients
General/MDHHS	397	Beyond Breathing: Tools for Teaching Relaxation in Trauma Work
General/MDHHS	398	Rethinking Retention: A More Holistic Approach to Supporting Foster Parents
General/MDHHS	399	Changing Outcomes Through Resiliency
General/MDHHS	700	The Crossroads of Child Welfare and Human Trafficking
General/MDHHS	701	Preventing Further Harm: A Brief Overview of Trauma for the Child Welfare Profession
General/MDHHS	201-18	Connecting Brain and Behavior
General/MDHHS	203-18	“Who Am I?” Fostering Identity Development with Foster and Adopted Youth
General/MDHHS	205-18	Why It’s Wrong to Assume Infants Are Resilient: Exploring the Effects of Trauma in Pregnancy and Infancy
General/MDHHS	206-18	Youth Aging Out of Foster Care: Body-based Practices to Promote Post-traumatic Growth
General/MDHHS	209-18	A Guide to Caring for Muslim Children in Foster Care
General/MDHHS	210-18	The Opioid Crisis in America: Identification and Treatment Strategies for Social Workers
General/MDHHS	212-18	Engaging Older Youth in Permanency Planning: To be Adopted or Not to be Adopted?
General/MDHHS	213-18	Ending Zero Tolerance: What Child Welfare Workers Should Know
General/MDHHS	214-18	The Impact of Racial Bias on Traumatized Clients in Child Welfare
General/MDHHS	211-18	Integrating Mindfulness and Wellness for Stress Reduction
General/MDHHS	215-18	Trauma and Substance Use
General/MDHHS	220-18	Challenges in School (Part 1): Barriers for Children in Foster Care
General/MDHHS	221-18	Challenges in School (Part 2): Strategies for Success
General/MDHHS	200-19	The Matter of Motivation
General/MDHHS	201-19	Big Behavior and Trauma: Similarities, Differences, and Strategies for Working with Traumatized Youth
General/MDHHS	202-19	Making Trauma-Informed Placement Decisions
General/MDHHS	203-19	Stress and Burnout in Foster Families
General/MDHHS	204-19	Mindfulness, Wellness, and Creative Self-care for Helping Professionals
General/MDHHS	205-19	Advocating for Homeless Youth
General/MDHHS	206-19	Opportunity in Crisis: Managing Crises of Traumatized Youth
General/MDHHS	215-19	Beyond “No Means No”: Teaching Families About Body Safety and Consent
General/MDHHS	220-19	When They Are All Survivors: Child Maltreatment in the Context of Domestic Violence
General/MDHHS	221-19	Understanding Transracial Adoption
General/MDHHS	222-19	Making the Case for Retention-Focused Management

Previously recorded live webinars, accessible on-demand online through Michigan State University

TARGET AUDIENCE	COURSE #	TRAINING TITLE
General/MDHHS	223-19	Beauty and the Beast: Understanding Transitional Planning When Working with Youth in Residential
General/MDHHS	225-19	Perinatal Mood and Anxiety Disorders: What Every Care Provider Must Know
General/MDHHS	227-19	Special Education: Considerations for Child Welfare
General/MDHHS	230-19	Understanding Children's Grief
General/MDHHS	231-19	Trauma-Informed Foster Care
TARGET AUDIENCE	COURSE #	TRAINING TITLE
Leadership	323	Supervision in Child Welfare: Strategies to Engage and Support Workers
Leadership	339	Principles of a Mobile Workforce
Leadership	702	"I Love My Job": Supervision as a Tool for Preventing Burnout and Vicarious Trauma with Workers
Leadership	216-18	Supervision Strategies for Managing Secondary Trauma and Workplace Stress
Leadership	218-18	Principles of Staff Engagement



School of Social Work
MICHIGAN STATE UNIVERSITY

Registration for child welfare online courses is no longer required!

All child welfare online courses are available here:

<https://socialwork.msu.edu/continuing-ed/online-child-welfare-courses.html>

Click on "Begin this course" under the course you would like to take. This will take you to a survey to record your attendance, and then you will be redirected to the video.

NO CECHs ARE AWARDED FOR THESE ONLINE COURSES.

Additional online trainings will become available soon!

Stay tuned, and check the website often!

Calendar of trainings

MONTH	TRAINING TITLE	DATE and TIME	LOCATION	HOSTING UNIVERSITY	PAGE
September 2023	Current Trends in Adolescent Substance Use, Treatment, and Risk Mitigation	Friday, September 15 8:45 AM - 12:00 PM (ET)	GVSU Pew Campus Grand Rapids	Grand Valley State University	7
October 2023	Motivational Interviewing: Beyond the Basics	Thursday, October 5 9:00 AM - 12:15 PM (ET)	Live synchronous training via Zoom	Michigan State University	8
	Working with and Supporting Transgender Youth	Wednesday, October 11 1:00 PM - 4:15 PM (ET)	Live synchronous training via Zoom	Wayne State University	14
	Secondary Trauma: Witnessing Trauma, Compassion Fatigue, Burnout, and Self-care	Friday, October 13 9:00 AM - 12:15 PM (ET)	Live synchronous training via Zoom	Andrews University	5
	Synapses, Neurons, and Trauma, Oh My!	Friday, October 13 9:00 AM - 12:15 PM (ET)	Live synchronous training via Zoom	Spring Arbor University	12
	Placing a Child Transracially	Friday, October 27 3:00 PM - 4:15 PM (ET)	WEBINAR	Michigan State University	15
November 2023	Growing Attachment Through a Play-based Lens	Friday, November 3 8:45 AM - 12:00 PM (ET)	GVSU Pew Campus Grand Rapids	Grand Valley State University	7
	Supporting Kids and Adolescents with Autism Spectrum Disorders: Understanding and Advocating for Effective Strategies in the School Environment	Friday, November 3 9:00 AM - 12:15 PM (ET)	Live synchronous training via Zoom	Eastern Michigan University	6
	Secondary Trauma: Addressing Compassion Fatigue Through Resilience	Friday, November 3 12:00 PM - 1:15 PM (ET)	WEBINAR	Saginaw Valley State University	15
	What Is Fostering? Techniques for Supporting Foster Parents of Children Who Have Experienced Trauma	Wednesday, November 8 9:00 AM - 12:15 PM (ET)	Live synchronous training via Zoom	Spring Arbor University	12
	Compassionate Grief: Healing into a New Sense of Self	Thursday, November 9 9:00 AM - 12:15 PM (ET)	Live synchronous training via Zoom	Michigan State University	8
	Sharpening Assessment Skills: Tools and Strategies to Recognize Signs/Symptoms of Substance Use Disorder	Friday, November 10 10:00 AM - 1:15 PM (ET)	Live synchronous training via Zoom	Northern Michigan University	10
	All Eyes on Them: Navigating the Special Education Process from an Interdisciplinary Perspective	Friday, November 10 1:00 PM - 4:15 PM (ET)	Live synchronous training via Zoom	Wayne State University	14
	Introduction to Forensic Interviewing	Thursday, November 16 12:00 PM - 1:15 PM (ET)	WEBINAR	Michigan State University	16
	Introduction to Non-violent Communication	Friday, November 17 12:00 PM - 1:15 PM (ET)	WEBINAR	Michigan State University	16
	December 2023	Understanding Social Identity and Implicit Bias in Social Work	Monday, December 4 12:00 PM - 1:15 PM (ET)	WEBINAR	Michigan State University
Culturally Sensitive Practice for LGBTQ Youth and Their Families		Friday, December 8 12:30 PM - 3:45 PM (ET)	Live synchronous training via Zoom	Saginaw Valley State University	11
Trauma Informed Teams		Thursday, December 14 10:00 AM - 12:15 PM (ET)	Live synchronous training via Zoom	Michigan State University	9
Child Brains and Trauma: How ACEs May Predict Development		Friday, December 15 12:00 PM - 1:15 PM (ET)	WEBINAR	Michigan State University	17
January 2024	Exploring Opportunities Through Higher Education	Friday, January 12 9:00 AM - 12:15 PM (ET)	Live synchronous training via Zoom	Saginaw Valley State University	11
	Preservation: Advocating for Clients	Friday, January 19 9:00 AM - 12:15 PM (ET)	Live synchronous training via Zoom	Andrews University	5
	LGBTQIA+ Youth: Recognizing, Responding, and Managing Emotional Pain	Friday, January 19 9:00 AM - 12:15 PM (ET)	Live synchronous training via Zoom	University of Michigan	13

Calendar of trainings

MONTH	TRAINING TITLE	DATE and TIME	LOCATION	HOSTING UNIVERSITY	PAGE
February 2024	Infant Mental Health: Supporting the Relational Needs of Infants and Toddlers in Foster Care	Thursday, February 8 9:00 AM - 12:15 PM (ET)	Live synchronous training via Zoom	Eastern Michigan University	6
	Youth Mental Health: Supporting Resilience in Adversity	Friday, February 9 10:00 AM - 1:15 PM (ET)	Live synchronous training via Zoom	Northern Michigan University	10
	Transracial Adoptees: Centering the Person in Support	Thursday, February 15 9:00 AM - 12:15 PM (ET)	Live synchronous training via Zoom	University of Michigan	13
	Identifying Anti-Racist Behaviors in Child Welfare Practices	Thursday, February 15 3:00 PM - 4:15 PM (ET)	WEBINAR	Wayne State University	18
	Crisis Management: Safety Planning with a Family in Crisis	Friday, February 23 10:00 AM - 11:15 AM (ET)	WEBINAR	Northern Michigan University	18

Additional trainings
and exciting new
topics coming
in spring 2024!



School of Social Work
MICHIGAN STATE UNIVERSITY

Continuing Education
MSU School of Social Work
Baker Hall
655 Auditorium Road, Room 2
East Lansing, MI 48824