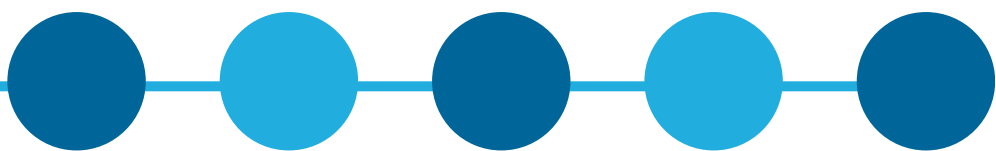


# INCLUSION IS NOT A READINESS MODEL





# PEER TO PEER

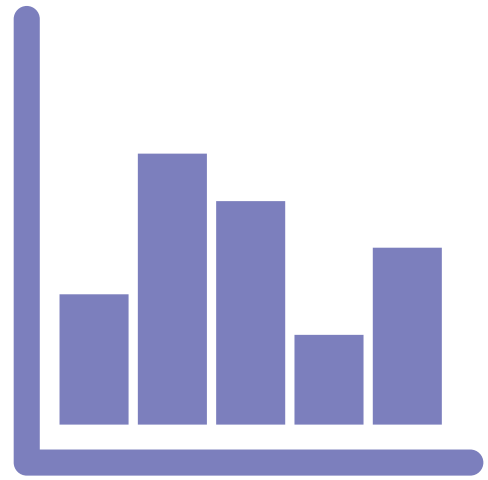
isn't one more thing,

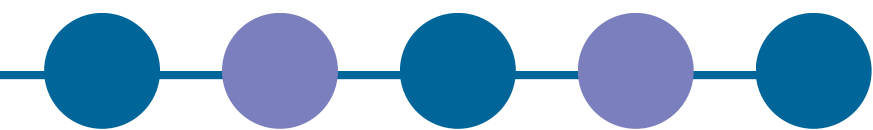
# IT IS THE

# THING



# USE DATA TO TELL THE STORY



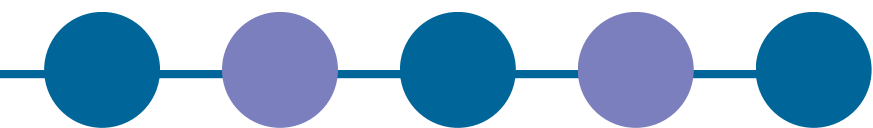


**EFFECTIVE**

for all students;

**ESSENTIAL**

for some



# FAMILIES.

---

THE HEART OF THE  
TEAM, NOT JUST  
PART OF THE TEAM.

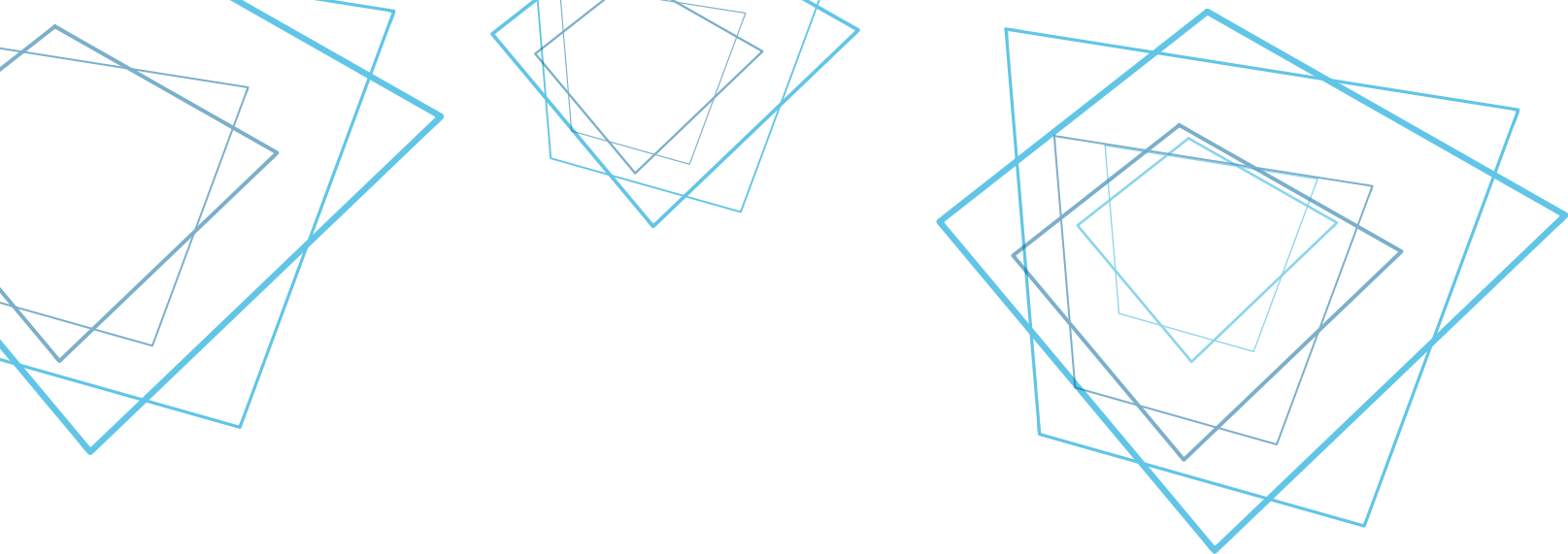






**WE DID WHAT WE DID  
WHEN WE KNEW WHAT WE KNEW.**

**WHEN WE KNOW BETTER,  
WE DO BETTER.**



# TEACH WHERE AND WHEN







# ALL DECISIONS

are informed by the

# LAW, RESEARCH,

and

# DATA



The page is decorated with numerous small triangles in shades of blue and purple, scattered across the top and bottom edges.

# PRESUME COMPETENCE

Three horizontal brush strokes in a purple color, of varying lengths, are positioned below the main title.



**WRITE IT DOWN**  
**WRITE IT DOWN**  
**WRITE IT DOWN**





**COMMIT. CREATE.  
ADVOCATE.**

**A pledge to equity  
& inclusion every day.**





# **Independence Facilitators** **FACILITATE** **INDEPENDENCE**



**START**  
**SOMEWHERE**

*&*

**START** **NOW**

Be Curious.  
Be Open