

Do you need help on campus?

www.gvsu.edu/emergency

Download the Laker GUARDIAN mobile safety app

which creates a two-way connection between you and the campus police anywhere on campus.

See the back for a quick FAQ, and find out more at www.gvsu.edu/gvpd/guardian

GVSUAlert.))



Make sure you get notified – go to www.gvsu.edu/emergency and click on **update my info** to sign up for text alerts in case of a campus emergency.

Safewalk

From 6 p.m. to 7 a.m. Fall and Winter semesters, campus pedestrians can call **(616) 331-3255** and student cadets will walk you to your destination.

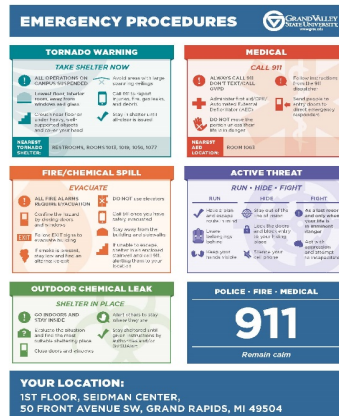
<https://www.gvsu.edu/gvpd/safewalk-program-92.htm>

Want to be better prepared?

Take a training: Campus Officials offer training for emergency preparedness, what to do in case of an active shooter, and how to handle dangerous situations. Find out more at

www.gvsu.edu/emergency

More Campus Resources:



- There are land-line phones in any campus building that does not have good cell coverage. Check your nearest hallway.
- There are emergency placards in every GVSU classroom. Take a look before you teach!
- All GVSU classrooms have thumb locks on the doors.

- Many department offices have an emergency coordinator and an emergency guide. Ask your office coordinator for details.
- Departments can schedule trainings with GVSU Public Safety to meet their particular concerns. Check with your Unit Head.

Guardian App FAQ

- **What does it do?**
It has several features, but we'll highlight a couple for you. Set a safety timer and dispatch will check in with you if you don't turn it off before time is up. Call safety officials directly for help if you are in trouble. Send text tips – including photos – if you see something suspicious.
- **What can I use it for?**
Any situation where you feel unsafe, such as walking to your car at night, working in your office during off hours, meeting with a student who you anticipate could be difficult or dangerous.
- **So are the police tracking my every move if I use this?**
They only see your location if your alarm goes off or if you press the call button. Up until that point, they only see in the background that someone is using the system, but have no further information.
- **What if I forget to turn it off? Are the police going to show up?**
They call you first, and if you give a correct PIN code, no one will show up.
- **What if I forget my PIN code?**
Well, you have to enter it to turn tracking on, so....
- **What happens if I give them the wrong PIN?**
They ask you a second time. If you get it wrong again, they will send an officer out to you.

For more information, please visit www.gvsu.edu/gvpd/guardian.