



FAMILY GUIDE

GRAND VALLEY STATE UNIVERSITY



GRAND VALLEY
STATE UNIVERSITY
www.gvsu.edu



WELCOME

We are honored that your student has decided to enter the Grand Valley State University community. It is a community designed to challenge his or her thinking and intellect. Because it is a community, Grand Valley has many services for students. This guide informs you of what is available to your student as they make the profound transition to college life and take their first step toward becoming a Laker for a Lifetime.

Our faculty is dedicated to teaching and involving undergraduates at the highest level of engagement. Your student has the opportunity to excel academically at Grand Valley and be guided by the best. Their success is integral to our mission to educate students to shape their lives, their professions, and their societies.

Your student will have social opportunities as well. We have an active Office of Student Life with hundreds of clubs to fit students' interests. It's important that you stay engaged with your student as he or she explores independence and faces exciting decisions.

You can be assured that the Grand Valley community is committed to your student's success while at Grand Valley and after. Once you get to know GVSU, we know you'll believe your student made the right decision to join us.



Sincerely,

A handwritten signature in black ink, which appears to read "J. Haas". The signature is stylized and fluid.

Thomas J. Haas
President

To make the most of the Family Guide:

- read the information and discuss it with your student;
- keep this guide to use throughout the years; and
- discover more helpful tips by visiting us online at www.gvsu.edu/family/.

Grand Valley has published this guide in order to help inform you of the resources available to your student. We hope this will be helpful in maintaining a supportive connection with your student during their college years.

TABLE OF CONTENTS

LAKER FAMILY1

About Grand Valley 2

Liberal Education..... 3

FERPA 101..... 3

LAKER LEARNING AND SUCCESS4

Academic Advising 4

Academic Support Services 4

University Libraries 6

Tools for Academic Success 8

Study Abroad..... 10

Research and Scholarship 11

Fellowships..... 11

Blueprint For Success 12

LAKER SUPPORT.....16

Career Center 16

University Counseling Center 18

IT Support 19

Campus Interfaith Services 20

Division Of Inclusion And Equity 20

Campus Interfaith Resources 20

Disability Support Resources 20

Milton E. Ford LGBT Resource Center 20

Office of Multicultural Affairs..... 21

Title IX And Gender Equity 21

Women's Center 21

LAKER FINANCES.....22

Financial Aid 22

Student Employment 22

Scholarships 22

Moneysmart Lakers 22

Banking and ATMs 23

Student Accounts 23

LAKER LIVING24

Housing and Residence Life 24

Dining On Campus 26

Transportation..... 27

Living Off Campus 28

LAKER LIFE.....30

Student Life 30

Student Organizations..... 32

Staying Active 34

Music and Dance Opportunities..... 35

Theatre Opportunities 35

LAKER RESOURCES36

Campus Maps 42

Advising Centers..... 44

Notes..... 45

The Family Guide is produced by the Promotions Office. Promotions is a part of Student Life, and we create design and print materials for Registered Student Organizations, GVSU departments, and the campus community. Find out more at gvsu.edu/promotions/.

This year's Guide was designed by Lan Nguyen, a student, and printed through a local vendor.



LAKER FAMILY NETWORK

On behalf of the parents and families of Grand Valley State University students, welcome! We're glad you're a part of our family. The Family Guide can help serve as a resource for you over the next several weeks or next four years. Once your GVSU student becomes a part of campus, you may be wondering, "What's my role? What do family members of college students do?"

Here at Grand Valley, families have an opportunity to build their own relationship with the University. Family members just like you attend events, volunteer, and serve in leadership roles on our Laker Family Advisory Committee. Families also support Grand Valley by making gifts to the Grand Valley Fund, attending sporting and performance events, and reaching out across the miles on Facebook.

"That's good information," you may be thinking, "but how do I continue to support my student now that they're in college?" The Laker Family Network is here to help answer that question and other questions that you have along the way as members of the Laker family.

Yes, supporting a college student is different. Your role shifts from one of day-to-day monitoring to one of week-to-week mentoring. Here are some recommendations we can make to help your family in this transition.

AGREE HOW YOU'LL COMMUNICATE: Do you text, Skype, email, or call? Find what works best for you and your student and be clear

Recommended Resources

There are many great books that can help you and your family in the transition from high school to college. Fellow Grand Valley parents suggest:

- *The Happiest Kid on Campus* by Harlan Cohen (for parents) or *The Naked Roommate*, also by Harlan Cohen (for students)
- *Letting Go* by Karen Levin Coburn and Madge Lawrence Treeger
- *You're On Your Own (But I'm Here If You Need Me)* by Marjorie Savage
- *1001 Things Every Teen Should Know Before They Leave Home* or *1001 Things Every College Student Should Know*, both by Harry H. Harrison, Jr.
- *The iConnected Parent* by Barbara K. Hofer
- *How to Raise an Adult* by Julie Lythcott-Haims

about your expectations for each other. If you are connected with your student on social media, consider a discussion about ground rules to avoid over communicating and provide space for individual growth.

TALK ABOUT ACADEMICS, FINANCES, BELONGING, WELLNESS, AND SAFETY: Every family has different circumstances and different students have different needs. Be a partner in your student's college experience by checking in on these five topics and use the resources shared today, in the Family Guide, or on the Laker Family Network website (www.gvsu.edu/family) to help your student connect with the appropriate campus resources. Additionally, make sure that your student marks their calendar to attend the required fall orientation program for new students, Transitions: New Student Orientation (www.gvsu.edu/transitions/). Other beneficial events for new students include Laker Welcome Events and Campus Life Night. These exciting programs are designed to provide intentional opportunities to build community and to share valuable information with students as they acclimate to life as Lakers.

PLAN TO LISTEN: While college can serve as a wonderful experience for students, it can also be a very challenging one. It is a time of new freedoms, new opportunities, new responsibilities, and new friendships. Because you've always been there, know that you will likely remain the "go-to" person when they experience joy or disappointment. When things go wrong, calmly listen to their frustration and give them an opportunity to create a solution on their own. Ask, "What do you think your next step should be?" or, "Which campus resource do you think is the best for this situation?"

EMPOWER: Whether this is your first student attending college or your third, the transition to college varies from student to student. As the college experience is, by its very design, intended to further student growth and development, take some time to determine some essential skills that will benefit your student. Be comfortable in knowing that with your support they can ultimately be capable of and responsible for making their own decisions as they make the transition to college.

Growing into a mentoring relationship with your student may not always be easy, but learning to respect and value one another in a new way can strengthen your bond even more. You have helped shape the foundation for their lives and we're grateful to be a part of what's next as they join the Laker community and grow their #GVLakerEffect. We look forward to getting to know your family— Go Lakers!

Laker Family Network
www.gvsu.edu/family

ABOUT GRAND VALLEY

Mission

Grand Valley State University educates students to shape their lives, their professions, and their societies. The university contributes to the enrichment of society through excellent teaching, active scholarship, and public service.

Vision

Grand Valley State University demonstrates its commitment to providing an inclusive learning environment where all students can explore new directions, find their niches, and develop skills for life and productive careers. Grand Valley is known for increasingly innovative and outstanding teaching, recognized scholarship, significant community engagement, and excellent stewardship of its resources. Our university inspires and equips students to be active lifelong learners and global citizens. Grand Valley strives to be a model public university shaping leaders for success.

Value Statements

At Grand Valley, we value:

- Excellence
- Integrity
- Inquiry
- Inclusiveness
- Community
- Sustainability
- Innovation

Visit www.gvsu.edu/strategicplanning to learn more.

Grand Valley is proud to have eight colleges offering more than 100 undergraduate, graduate, and doctoral degrees:

- Brooks College of Interdisciplinary Studies
- College of Community and Public Service
- College of Education
- College of Health Professions
- College of Liberal Arts and Sciences
- Kirkhof College of Nursing
- Seidman College of Business
- Seymour and Esther Padnos College of Engineering and Computing

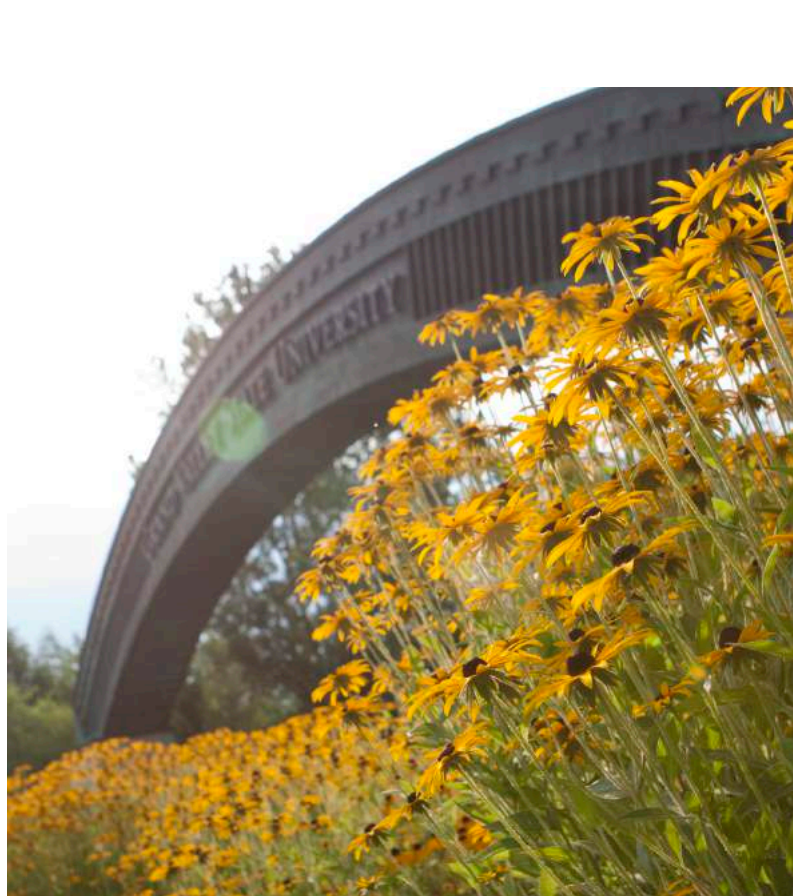




LIBERAL EDUCATION

A strong liberal education serves as the foundation for Grand Valley State University's wide array of undergraduate and graduate programs. We are committed to providing your student with a broad educational experience that integrates liberal learning with preparation for a career or profession. Liberal education begins with encountering the great ideas of diverse traditions in the humanities, the visual and performing arts, the natural and social sciences, and mathematics, and is an essential part of all of our professional programs.

We value the liberal ideals of critical thinking and preparing students for lifelong learning. The practice of liberal learning develops the skills of inquiry and reflection, which guide students to think for themselves, gain self-knowledge, and make ethical judgments. Such learning can inform individual and collective actions and prepare your student for the responsibility of local, national, and global citizenship.



FERPA 101

The Family Educational Rights and Privacy Act of 1974 (FERPA) also known as the Buckley Amendment, helps protect the privacy of student records. Under FERPA eligible students have the right to inspect and review their education records; seek amendment of any records believed to be inaccurate; consent to disclosure of education records except to the extent that FERPA authorizes disclosure without consent; and to file a complaint with FPCO concerning potential violations.

FERPA applies to students who are currently (or formerly) enrolled in higher education, regardless of age or status. Grand Valley provides all students with full access to their records either in person or by use of the university website.

FERPA identifies college students as adults responsible for determining who may receive information about them. While guardians/parents understandably have an interest in a student's academic progress, they are not automatically granted access to a student's records without written consent of the student. Students can provide view access to their online records using the Guardian/Family Access tab in myBanner. Guardians/Parents are encouraged to consult with the student if academic information is needed.

For additional information please refer to the FERPA guidelines available on the Registrar's website at www.gvsu.edu/registrar

LAKER LEARNING AND SUCCESS

Grand Valley wants your student to succeed in the classroom and we know you do too. Learn about the many academic resources that will aid their success.

ACADEMIC ADVISING

Definition of Advising

Advising is an integral part of your student's college education. The advising process establishes a collaborative relationship between your student and an advisor in which the student feels a sense of connection, support, and guidance. Effective advising is developmental. It responds to, and creates, growth and change within the student. Advising encourages students to think critically, seek out resources, and develop action plans. It provides students with the information and encouragement they need to take personal responsibility for exploring options and making decisions. Ultimately, advising will allow your student to achieve a meaningful and successful educational experience. For more information, visit www.gvsu.edu/advising/.

Student's Role and Responsibilities in Advising

1. Consider academic and career goals.
2. Write a list of questions before each advising session.
3. Initiate contact with a faculty advisor and/or an advising center.
4. Actively participate in advising sessions.
5. Ask questions! If unsure of a policy or procedure, be sure to ask questions until it's understood.
6. Know the academic calendar. Do not miss deadlines. Know when to register and drop or add courses.
7. Schedule courses that are consistent with educational goals and will meet degree requirements.
8. Accept responsibility for making final decisions on academic choices.

ACADEMIC SUPPORT SERVICES

Tutoring

Grand Valley is committed to providing tutoring to all students in most 100- and 200-level courses. Tutorials are conducted in weekly, one-hour sessions in small group settings. Tutoring assistance is free and open to all Grand Valley students.

Mathematics and Statistics Center

Drop-in tutoring for math and statistics is offered. The Center is open to any student who wants help with their homework or needs clarification. There are no designated tutoring times, but students are welcome to request an individual tutoring time.

Science Success Center (SSC)

Science Success Center is a free walk-in service (no appointment needed) where facilitators provide one-on-one, as well as group tutoring, for Grand Valley students. Subjects that SSC provides assistance with are: biology, biomedical sciences, chemistry, and physics.

Structured Learning Assistance (SLA)

Structured Learning Assistance is an academic support program that is available to all interested students. SLA features weekly study and practice workshops in which students master course content to develop and apply specific learning strategies for the course. The workshops are led (facilitated) by successful upper-level students, who in collaboration with the professor, develop workshop materials. The facilitators clarify lecture points for the students and assist them in understanding the expectations of the professor.





Fred Meijer Center for Writing and Michigan Authors

The Fred Meijer Center for Writing and Michigan Authors provides help with writing for any course, at any stage of the writing process. The Center's well-trained peer consultants can help students brainstorm ideas, organize content, integrate research, polish a draft, and correctly document sources. Drop-in times are available, as well as scheduled appointments.

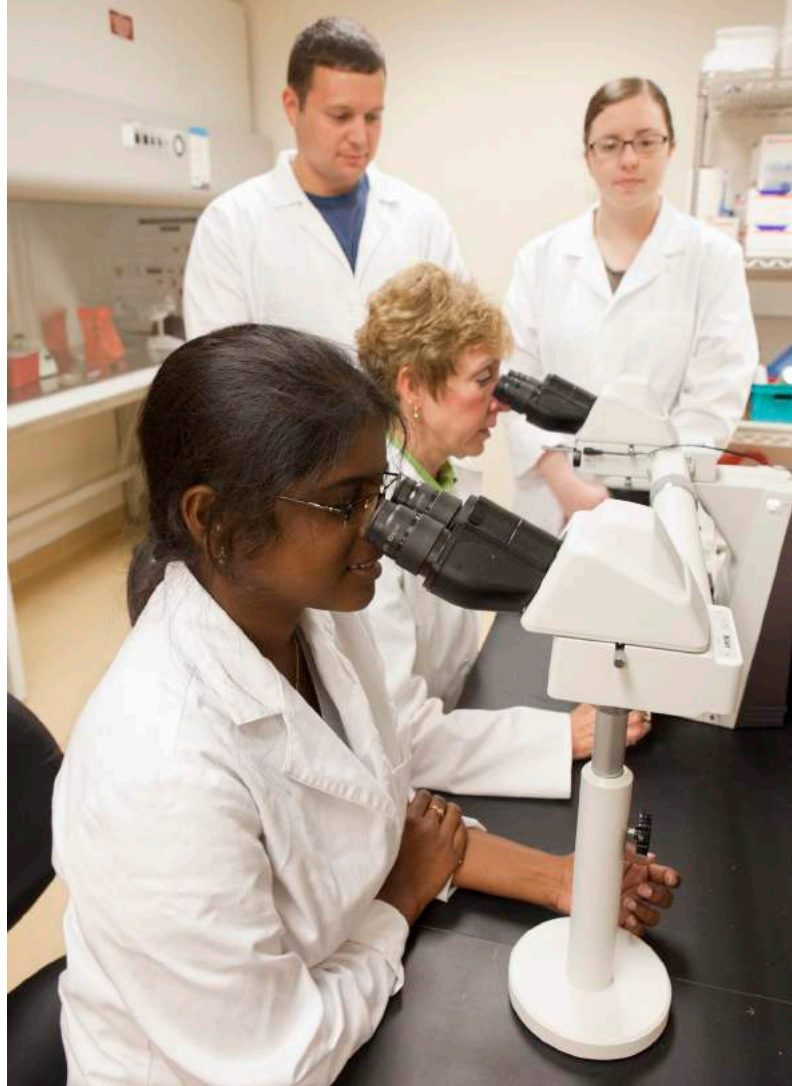
Study Skills Coaching

Study Skills Coaching is available to assist students with achieving their academic goals. Students can meet with a study skills coach individually or in small groups to discuss a variety of topics including: time management, study strategies, procrastination, test taking strategies, etc. Coaches can also help students develop strategies for improving their academic success.

Individual Academic Success Plan Consultations

For students who are experiencing more serious challenges in their academic progress, Individual Success Consultations are available. These one-on-one consultations with the Learning Skills Coordinator will assist students in assessing barriers to their academic success and in developing a success plan which may include study skills coaching or referrals to other GVSU resources.

For more information about academic resources or to make an appointment, visit www.gvsu.edu/sasc or call (616) 331-3588.



For a complete list of Advising Centers see page 44.



Anne L. Hiskes, Ph.D., Dean
Brooks College of Interdisciplinary Studies

"Welcome to the Laker Family! Encourage your students to explore other cultures and the diversity of human experience through coursework, community-engagement, and study abroad. GVSU has so many excellent opportunities for transformative growth in these areas, growth that is relevant for careers and life in general."

UNIVERSITY LIBRARIES

Grand Valley University Libraries have the resources and support services your student needs to succeed.

Five library locations in Allendale and Grand Rapids provide connections to resources, services, and lots of study space for group and individual work.

STUDENT SUPPORT

There are multiple ways your students may get help at our libraries, a few are listed below.

Meet with a Liaison Librarian

There is liaison librarian for each major at GVSU and each liaison has expertise with the subject specific information needs of those majors. Liaison Librarians also support students by visiting classes to teach about research, and by selecting books and other materials to buy for the library. All Liaison Librarians help students develop research questions, identify research strategies, evaluate the usefulness of specific sources, and find relevant and reliable information and data online. Liaison Librarians are available in person, by email, or by telephone.

Visit the Knowledge Market

The Knowledge Market is a program uniquely designed to bring peer consultants from the Libraries, the Writing Center, and the Speech Lab into one space to work with students in the libraries. Students get one-on-one or small group help developing research strategies, honing writing skills, or polishing presentations. Students may stop by or make an appointment.

Visit the Data Inquiry Lab (DIL)

Students can meet with faculty for help with quantitative data management, analysis, and visualizations. From workshops, and in-classroom demonstrations to one-on-one consultation, the DIL's purpose is to develop practical skills of GVSU students, faculty, and staff. Located within the Knowledge Market of the Mary Idema Pew Library and Learning Information Commons, students may stop by, schedule and online consultation, or make an in-person appointment.



Stop by the Service Desk

At their point of need, students can stop by, chat online, text or tweet questions to our knowledgeable library staff.

LIBRARY SPACES

The Mary Idema Pew Library Learning and Information Commons on the Allendale campus provides an unprecedented array of spaces, furnishings, technology and services to support academic work and the development of skills your student will need to succeed during college and beyond. Seidman House, also on the Allendale campus, houses rare and special materials for students to use in their research; overlooking the ravines, it is also a favorite quiet study space for students during the weekday.

Our libraries accommodate the mix of social and academic learning that students prefer, but in an enriched environment that challenges their thinking, accommodates their needs for comfort and community, and provides seamless support services for their assignments.

Three locations on the Pew Campus offer spaces and services to support students located in downtown Grand Rapids. Students will find friendly staff and resources at Steelcase Library and the Curriculum Materials Library located in the Richard M. DeVos Center and at the Frey Foundation Learning Center in the Cook-DeVos Center for Health Sciences.



"Be sure your student checks out the libraries at GVSU. They are great places to study, to get help with a research project, to work in a group, or relax between classes."



In addition to a full suite of student support services, your student will have access to the following:

- A wide variety of study spaces to support both group and independent work
- Late night hours varied by location with extended hours during final exams
- Laptops and other equipment available for checkout at some locations
- Windows and Macintosh computers, printers, scanners and a variety of productivity software
- Fast, easy ways to request materials from other libraries, including electronic delivery to e-mail
- On-site IT support available
- Media and real-time programming to engage your student in diverse learning experiences beyond the classroom
- Study rooms with large digital displays and laptop connectivity designed for group collaboration at some locations
- Robust wireless network that also provides wireless printing from personal mobile devices (laptops, tablets, and phones)
- Argo Tea Café offers tea and coffee, smoothies, light meals and treats to sustain students through long study sessions in Allendale
- The Technology Showcase provides an immersive and engaging environment to interact, discover, and learn how innovative technologies can improve student learning

LIBRARY COLLECTIONS AND RESOURCES

- Over one million online electronic books
- Hundreds of electronic databases
- Over 500,000 printed books
- 70,000 print and electronic journals

Using our resources will help your student do better work. We invite you to stop by when you are on campus.

Learn more about the University Libraries at:
www.gvsu.edu/library/.



TOOLS FOR ACADEMIC SUCCESS

Grand Valley has compiled advising and support tools to ensure timely academic achievement and offers the Focus on the Finish grant to all students achieving a specified number of credit hours who show timely progress to obtaining degrees.

MyPath

The myPath tool is designed to assist students in the preparing and tracking of their academic progress toward graduation. It encompasses both a degree analysis audit and an educational planner.

Your student can use myPath to produce an easy to read and user-friendly degree audit. It also provides clearly defined information for selecting coursework, understanding degree requirements, and developing an educational plan.

Your student can access myPath online by logging into myBanner, selecting the “Student” tab, then “Student Records,” and then “myPath.”

The “What If” function allows your student to hypothetically change their degree, catalog year, major, minor, or emphasis.

The “What If” audit will show:

- Coursework required for the new major, minor, or emphasis
- Previously taken courses that are applicable to the new requirements
- The courses that still must be taken

Please note that “What If” does not change the major/minor. To declare a major, your student must go through the major declaration process in myBanner.

Students should review myPath throughout the academic year or after the following instances:

- Registering for classes
- Making changes to his or her schedule (drop/add)
- Receiving final grades
- Declaring, adding, or changing a major
- Applying for graduation



The myPath tool will verify that the courses registered in the current and future semesters or the final grades will satisfy the specific requirements toward your student's degree.

The Planner tab assists students in planning courses to complete their desired program. Audits and planning blocks can be viewed on one screen. Your student can drag and drop courses into future semester blocks and type courses directly into planner boxes. Courses should be entered as they appear in the catalog, for example, CHM 115, not Chemistry 115.

The audit will outline the courses needed to meet degree, major, minor, and/or emphasis requirements within each specific block. This information can be used to discuss your student's plan with an academic advisor.



Barry Kanpol, Ph.D., Dean
College of Education

“Welcome to Grand Valley State University. Please encourage your GVSU student to take advantage of our exceptional advising services as soon as possible. Getting off to a good start is a critical first step to the successful completion of a degree program at GVSU.”

Prepare for a Grand Finish

The less time a student spends in college, the less money is spent on their degree. Let us help them focus on the finish.

When a student completes 90 credit hours within three years of enrollment, we'll pay them \$1,000 over their next two semesters of study. It's our early graduation gift.

Transfer students can get a \$500 grant once they've earned 90 credit hours, with an average of 30 credit hours per year at Grand Valley in the year(s) following their transfer.

Every new, full-time student can take advantage of the Grand Finish. Dual enrollment and advanced placement credits earned prior to their first semester at Grand Valley count toward the 90 credit hour requirement, speeding a student's time to graduation.

Stay Focused

The Grand Finish grant was created to assist and inspire the largest number of students possible. Students in all Grand Valley programs are eligible.

Encourage your student to remain in good academic standing and make the required progress toward graduation. If your student is experiencing difficulty, they can get back on track with summer classes. More than 2,500 students received the Grand Finish in 2015-2016. Of the 2016 graduates who earned a degree in four years or less, 36% had no debt.

Plus, we've put together excellent advising and support tools to further ensure their timely academic achievement as outlined in this guide.

Visit www.gvsu.edu/admissions or www.gvsu.edu/grandfinish for more information.



STUDY ABROAD

The Barbara and Stuart Padnos International Center facilitates study abroad programs for GVSU students. Study abroad is a unique opportunity for students to earn credit towards their degree in another country on programs ranging from two weeks to a full year abroad. More than 700 Grand Valley students complete a study abroad program each year, with most students identifying their time overseas as one of the most impactful experiences of their college career.

Why Study Abroad?

- Intercultural communication skills
- Knowledge of other cultures
- Experience in an international academic/work/social environment
- Ability to work in diverse teams
- Foreign language experience
- Maturity, flexibility, and independence

Cost and Funding

Study abroad program costs vary depending on the program a student selects. While some programs are similar in cost to a semester at GVSU, others are more expensive and some may be less expensive. There are about 15 GVSU programs that may save students money when compared to the cost of a semester at GVSU.

Additionally, students are able to use financial aid, scholarships and grants to help fund their study abroad.



Safety Abroad

Student health and safety is the Padnos International Center's highest priority. The majority of study abroad programs have on site support for students. Our staff regularly monitors the latest travel warning information from the U.S. Department of State and has protocols in place should a crisis occur. Over 290,000 United States students earn credit abroad each year, and the vast majority have a wonderful and safe experience.

Contact Us

Students and parents can contact the Padnos International Center at (616) 331-3898 or studyabroad@gvsu.edu or visit us in 130 Lake Ontario Hall during office hours.

For more information

If your student is interested in studying abroad, please visit www.gvsu.edu/studyabroad/.



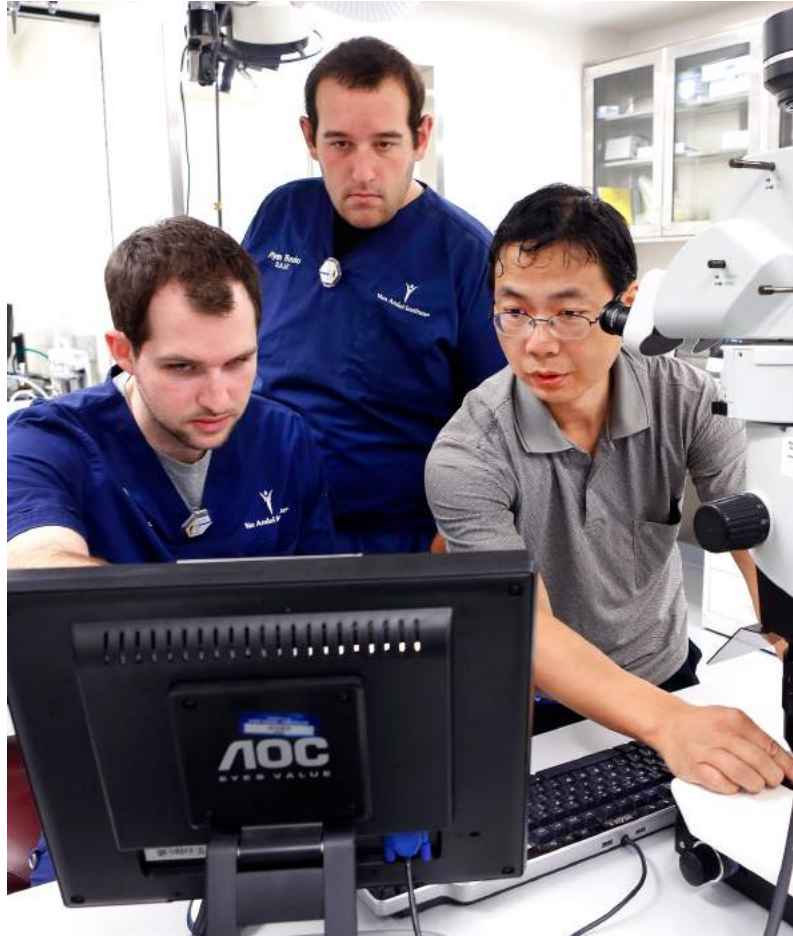


RESEARCH AND SCHOLARSHIP

The Office of Undergraduate Research and Scholarship (OURS) offers a variety of opportunities and resources for undergraduates to pursue creative work, scholarship, and research in various disciplines under the direction of a faculty mentor. These opportunities will enrich students' academic experience and challenge them to strengthen their critical, analytical, and writing skills. Students who participate in these opportunities will gain a competitive edge when applying to graduate schools and jobs post-graduation.

OURS programs and staff members support all aspects of the research and creative process including connecting with research faculty members, fellowships for conducting summer research, and travel grants to attend academic conferences and exhibits.

For more information, visit www.gvsu.edu/ours/.



FELLOWSHIPS

The Frederik Meijer Office of Fellowships assists GVSU students who show extraordinary potential in disciplines all across campus in preparing and applying for nationally competitive scholarships and fellowships. The staff matches opportunities with students' strengths, interests, and ambitions; helps students design a plan to attain their goals; and provides support throughout the application process. First year students are encouraged to prepare and plan ahead.

Visit www.gvsu.edu/fellowships to learn more.



"As parents, it is important to acknowledge that students will have success but also disappointment during this new journey into campus life. As a university, we want parents to be involved, to encourage and congratulate your students, and also help pick them back up when things do not go well. What is the best way to help? Support your student to solve issues, but do not attempt to solve them yourself."

BLUEPRINT FOR STUDENT SUCCESS

These pages introduce the four year Blueprint for Student Success. The items noted include aspects of GVSU's curriculum and co-curriculum, campus traditions, as well as learning outcomes noted in "Learning Reconsidered" and AAC&U's Liberal Education and America's Promise (LEAP). A Grand Valley education is characterized by programs that challenge, support, and engage the student in their academic experience.

Challenge

Your student will be challenged both inside and outside the classroom as they learn the value of liberal education. What is expected academically of your student will be clearly communicated.

Support

Support is available to your student personally, academically, and professionally through leadership opportunities, academic support services, and a wide variety of programs.

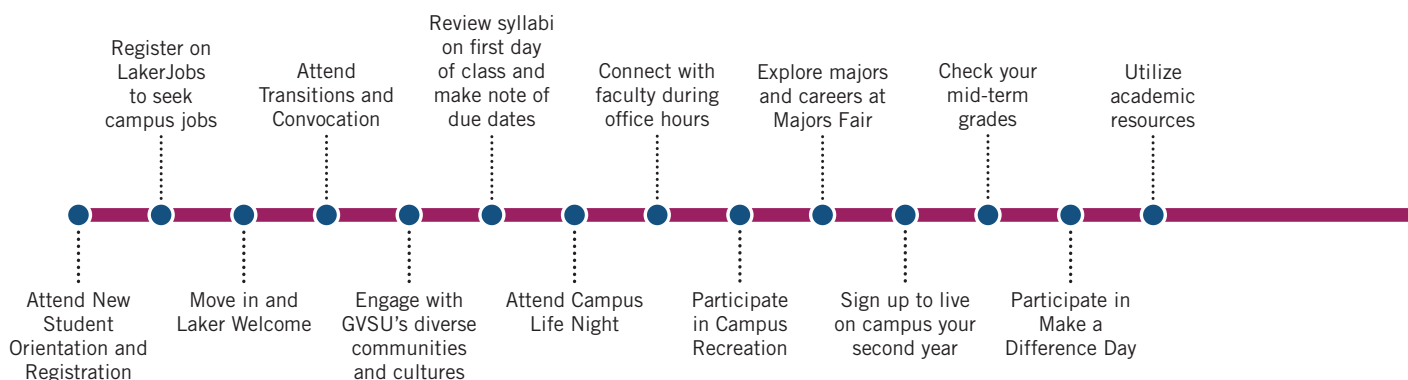
Engagement

Your student will be encouraged to engage in both curricular and co-curricular aspects of their education and via such opportunities as internships, service learning, and off-campus programs, as well as by building relationships with faculty members.

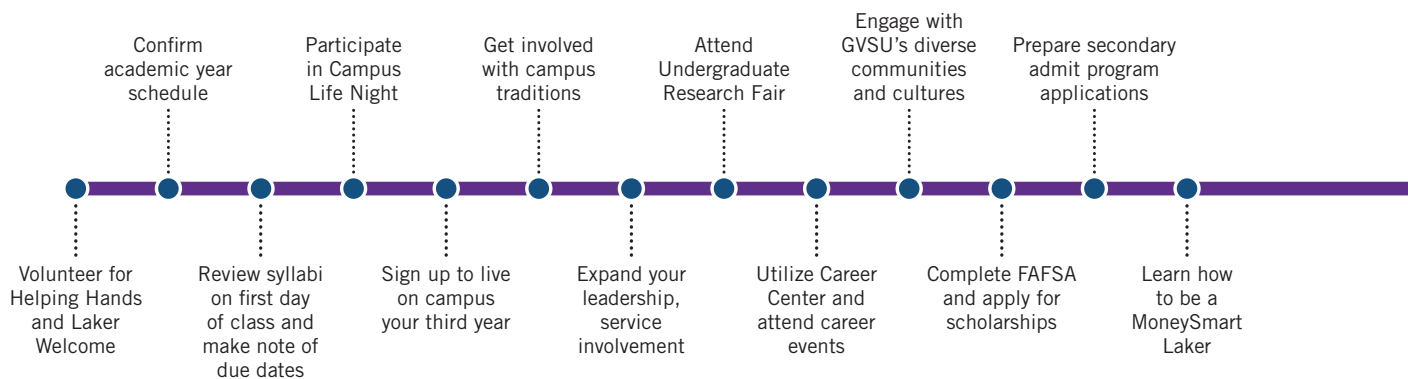
To Learn More

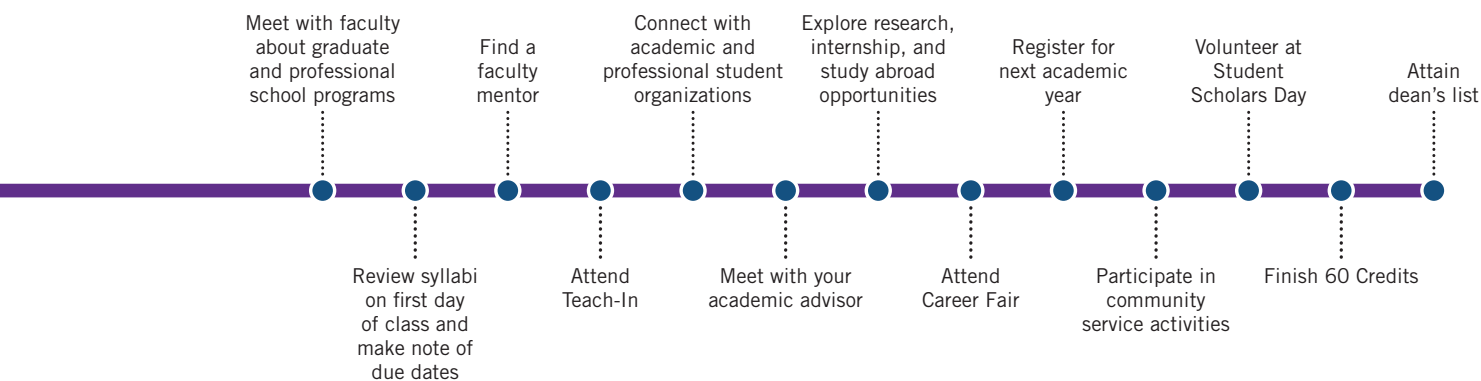
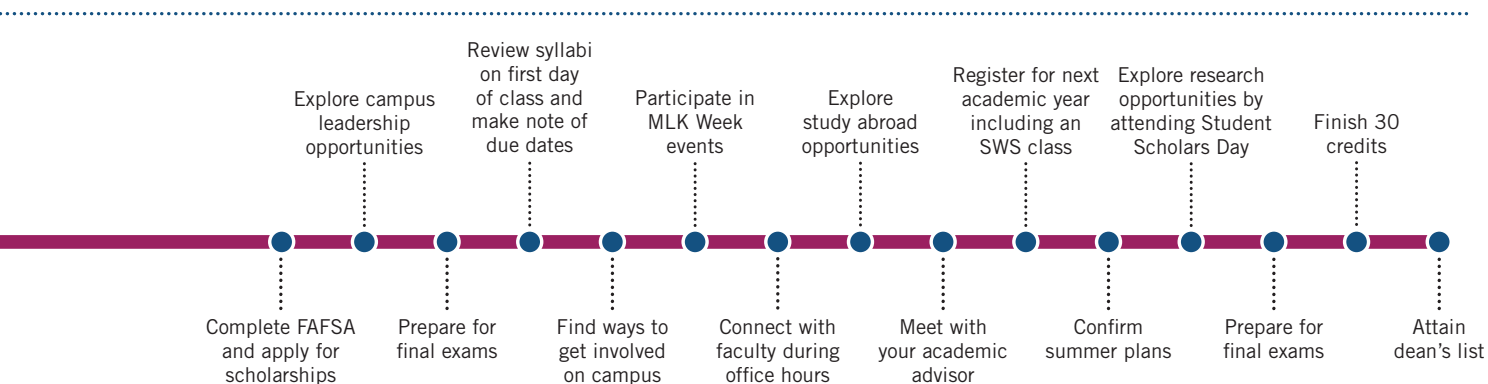
Look for the button labeled "Blueprint for Student Success" on www.gvsu.edu/advising/. This interactive guide will help your student map out the next four years to make the most of their college experience.

FIRST YEAR *Personal Transition Into College*



SECOND YEAR *Exploration of the College Community*

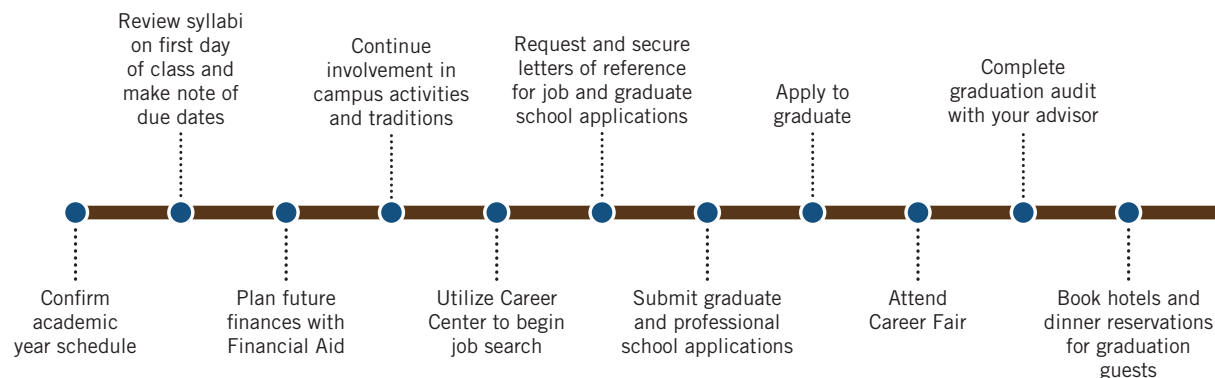


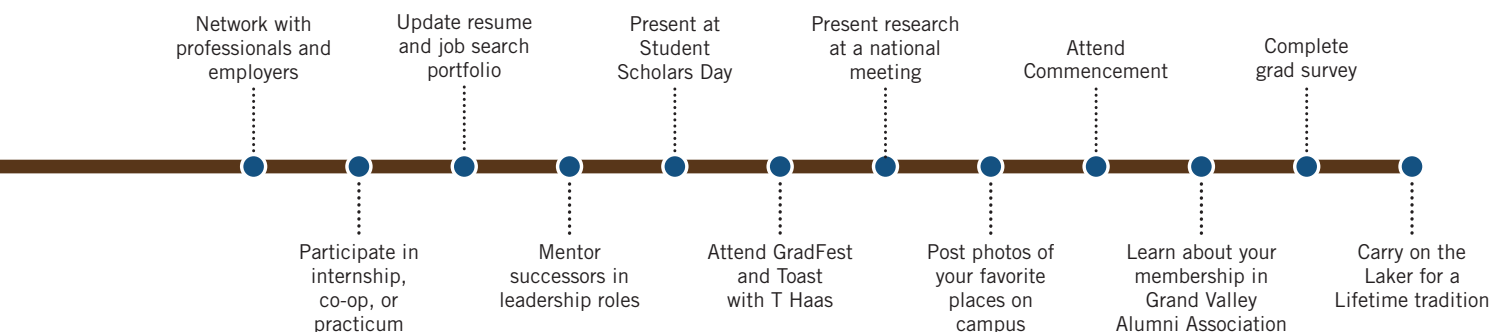
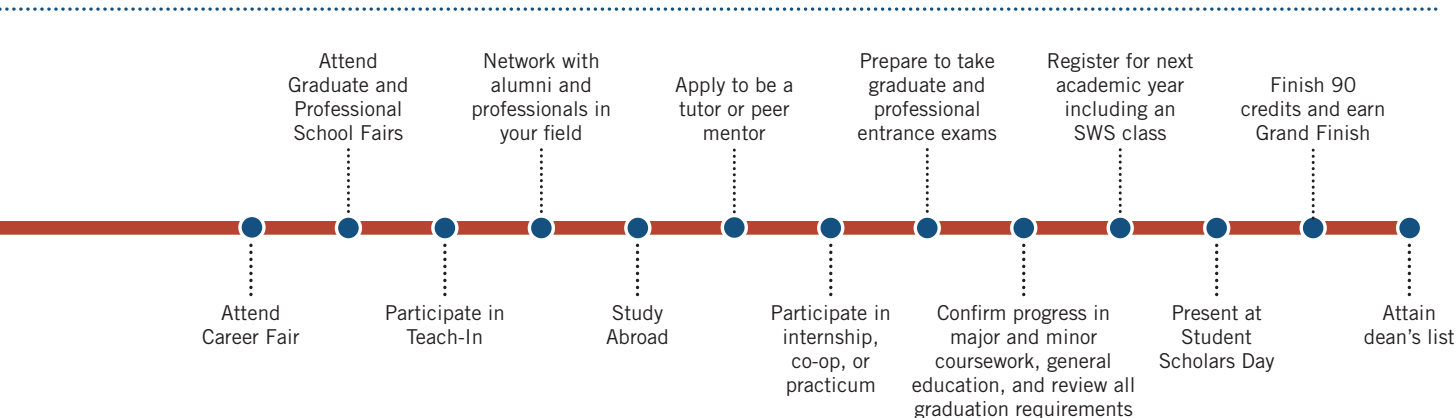


THIRD YEAR *Involvement in the Larger Community*



FOURTH YEAR *Transition to Career*





LAKER

for a Lifetime

- Stay Informed
- Get Involved
- Give Back
- Laker Pride

LAKER SUPPORT

Grand Valley offers numerous services to each student that helps them develop and grow as a student and an informed citizen. Learn about the many resources available to your student while they attend Grand Valley.

CAREER CENTER

The number one reason incoming students cite for coming to GVSU is to prepare for their future careers. Whether your student is confident, comfortable, or undecided with their major/career decisions, connecting early and often with the Career Center makes sense. The first year is the perfect time for students to begin building an individualized career plan, which will help lead to career success upon graduation.

Sound overwhelming? Don't worry, GVSU has many resources to help your student get started!

Me-Search

The old adage of going to college to find yourself is partially true—knowing who you are is a great foundation for building a career plan. GVSU offers a variety of career assessments, opportunities to explore interests and passions, and exploratory coursework through general education. US 102 is a career exploration course designed for undecided students to identify where their interests, passions and values lie and how that relates to majors and careers.

Want to get started at home? Focus II, an online, personalized career and educational planning tool, provides a complete picture of your student's interests, values, personality, skills, and leisure activities through assessments and interest inventories. After assessing personal attributes, the system searches its career and occupational information database to identify and analyze occupations and career paths that match these personal characteristics. Instructions for logging into Focus II can be found at www.gvsu.edu/careers/focus2.

Explore the World of Work

Majors Fair, Career Fairs, Grad Fair, Informational Interviews, and Job Shadows are just a few ways we help students connect to the world of work and explore the possibilities. Interaction within an industry, company, or job field gives students perspective on work environments, valued skills, and pathways to employment.



Get Experience

On-campus employment, summer jobs, volunteering, and internships are all great ways to cultivate work-related skills and put to practice the education your student is getting at GVSU. Additionally, 80 percent of internships lead to full-time employment offers!

All opportunities can be found on LakerJobs. This free, online job search tool is a partnership with employers to bring students part-time and full-time career opportunities with Grand Valley employer partners. New opportunities are posted daily, and it's free to sign up. Your student can simply go to www.gvsu.edu/lakerjobs and login.

Make Connections

People hire people... in fact, approximately 75 percent of jobs—especially entry-level positions—are filled through networking; and the Career Center has dedicated resources to help your student discover and nurture local, regional, and national employer connections.



Important Questions to Ask

Parents and families play a critical role, helping their student in the career development process, by asking questions about career choice and implementation.

There are no right or wrong answers to career questions. Only individual answers; answers that may change through education, new experiences and engaging the world of work.

Some questions to ask: **What are you good at? What do you like to do?** What are your interests, passions, and values? What are your skills and abilities? **What are ways you can gain experience on campus?** What did you learn about yourself from volunteering/attending an event/working on campus/doing research? **Have you visited the Career Center website? Made an appointment with a Career Advisor?** Attended a career event? Met with a faculty member? **Do you know about the world of work?** Have you talked with a professional in your field of interest? Job shadowed to see what work is like? **As it relates to your career, where do you want to go? How will you get there?** Do you have short and long term plans related to your future? Have you considered using Career Center as a planning resource?



Roy Olsson, Ph.D., Dean
College of Health Professions

"Express excitement about the new adventure they are about to begin; there will be pitfalls and great accomplishments. Be encouraging while allowing them to stand on their own."

UNIVERSITY COUNSELING CENTER

The mission of the University Counseling Center is to enhance the healthy development of our diverse GVSU community through prevention and education, psychological services, and consultation.

Counseling Services

The University Counseling Center is staffed by a diverse team of professional counselors committed to the well-being of individual students and the campus community. Counselors and students work together to determine the best course of treatment, which may include individual counseling, group counseling, or referral to a community provider. Student concerns that might benefit from counseling are varied, but can include feelings of anxiety or depression, use of drugs or alcohol, academic difficulties, and relationship issues.

Individual sessions are limited per Center policy. General therapy and skills groups are available weekly and offer both professional and peer support to students experiencing a wide range of personal concerns. Additionally, outreach workshops and events are scheduled throughout the year to provide students the knowledge and resources necessary to maximize their emotional and physical health. Visit www.gvsu.edu/counsel to learn more about University Counseling Center services and to access self-help tools.

Appointments

The University Counseling Center offers counseling at both the Allendale and Grand Rapids campuses. Students may make appointments for either location by contacting the Allendale office at (616) 331-3266 or by visiting the Allendale office in 204 STU during business hours.

Fees

Counseling services are free to currently enrolled Grand Valley students. Psychological testing and other evaluation and documentation services are available for a fee.

Accreditation and Licensure

The University Counseling Center is accredited by the International Association of Counseling Services. Members of the professional staff who provide mental health services are appropriately licensed in their respective fields. The Center also employs a number of doctoral and master-level interns, each of whom is supervised by a fully licensed clinician. Its doctoral internship program is accredited by the American Psychological Association.

Confidentiality

University Counseling Center services are confidential, with the following exceptions:

- Clear and imminent danger to oneself or others
- Disclosure of the abuse or neglect of a child or vulnerable adult
- A court order for records
- Written permission by the client

Due to confidentiality, the Center is unable to disclose a student's client status or information related to services that a student has received.

ACES

The Alcohol and Other Drugs Campus Education and Services (ACES) office provides information and support to students regarding alcohol and other drug issues. Substance use has a potential negative effect on student health, academic success, and career goals. ACES helps students learn to make responsible choices through a range of services that include prevention and education programs, non-court ordered counseling services, and recovery support. Students are educated that substances do not need to be at the center of one's college experience.

ACES also hosts daily 12-step meetings for students who may be starting a period of abstinence, are court-ordered to attend, or have a desire to stop drinking or using other drugs. In addition, ACES provides non-court ordered (or required) recovery coaching, limited individual counseling, and a substance abuse group to help support students in making a change or maintaining their abstinence.

GVSU takes alcohol and other drug issues seriously and enforces local, state, and federal laws. ACES helps students to be aware of health and safety issues, as well as consequences related to alcohol and drug use (MIP, DUI, Hosting and Furnishing to Minors, drug possession and use, etc.). Programs and materials are offered in a safe and non-judgmental environment. For more information about ACES services and on/off campus resources, visit www.gvsu.edu/aces or call (616) 331-2537.

INFORMATION TECHNOLOGY (IT) SUPPORT

General Technology Services

Students at Grand Valley have access to the latest in computer technology to prepare them with essential skills to succeed.

Resources include:

- Secure high-speed, campus-wide network
- Library access
- Computer labs/classrooms and kiosks
- Information Technology Help Desk
- Technology Showcase, an interactive and engaging environment to discover, learn, and share how innovative emerging technologies can enhance teaching and improve student learning at GVSU
- Web and Mobile Services

Computer Accounts

All students have a single computer account that allows access to specific applications or services pertaining to technology.

Among the applications provided per student are the following:

NETWORK ACCESS: Main access to computer labs and library access

EMAIL: GVSU Google email and Google Docs allows communication for Grand Valley business

BLACKBOARD: Courseware application that allows for communication of course materials

MYBANNER: Scheduling, registration, and other tasks concerning classes as well as the ability to maintain and retrieve information on personal data stored with the Records Department

NETWORK STORAGE: Students have access to 1 GIG of network disk storage for academic purposes. The storage space is for use in all courses and can be accessed on—or off—campus

PERSONAL WEB SPACE: Students have access to a server to develop personal web pages or for use in web development courses



Paul Plotkowski, Ph.D., Dean
Seymour and Esther Padnos College of
Engineering and Computing

"The first year of college is a time of many new discoveries for students, some of these are exciting, some can cause stress. As the parent of two GVSU students, I have tried to be there if they need my support, but also try and stand back and let them take the lead in their college experiences."

DIVISION OF INCLUSION AND EQUITY

The Division of Inclusion and Equity advances GVSU's social justice framework for equity and inclusion and assures compliance with laws related to civil rights. The division coordinates sustainable and strategic institutional efforts to engage all members of the community while also intentionally supporting and advocating for historically underrepresented communities. The division's work furthers the university's liberal education and student-centered mission. The division carries out this work through a variety of offices including those listed below.

CAMPUS INTERFAITH RESOURCES

Grand Valley State University provides opportunities for positive interfaith engagement around the religious, spiritual, and secular diversity of students, staff, and faculty. The aim of this work is to foster a campus climate inclusive of various identities and communities, to ensure that students are able to develop their worldviews in an affirming environment, and to promote an open and pluralist understanding of our increasingly diverse schools, workplaces, and communities. There are over 30 faith-based organizations. Information on campus interfaith efforts can be found at www.gvsu.edu/inclusion/interfaith/.

Additionally, the Kaufman Interfaith Institute at GVSU is a community organization housed at the university, which works with the wider West Michigan region to promote interfaith understanding and mutual respect through programs and conferences.

DISABILITY SUPPORT RESOURCES

The mission of Disability Support Resources (DSR) is to provide support resources and accommodations that enhance the environment for persons with disabilities, and to help educate the university community on disability issues. Program advisors work with students to assist with course selection, scheduling, and exploration of their areas of career interest. They may suggest referrals to other offices on campus for more comprehensive service in these areas. Alternative format textbooks, test taking, study skills, time management, transportation, assistive technology and resource agents are some of the services available in DSR.



MILTON E. FORD LGBT RESOURCE CENTER

The Milton E. Ford LGBT Resource Center offers many programs and resources to enrich and support the LGBTQIA+ campus community. Through a combination of educational programming and community-building opportunities, students connect with each other, the Center, and the university. Located in the Russel H. Kirkhof Center, the LGBT Resource Center is a community space where students meet with friends, spend time between classes, and access LGBTQIA+ inclusive resources. The Center offers a variety of programs throughout the year, including featured guest speakers, Queer Connections Mentoring Program, Queer and Trans 101 workshops, Lavender Graduation, and events celebrating National Coming Out Day, Transgender Day of Visibility, and more. The Center also hosts a number of on-going programs facilitated by student leaders. First-year Queer Alliance (FQA) helps first-year LGBTQIA+ and allied students develop strategies for a successful first year by creating meaningful connections to each other and the campus community. Loud and Queer (L&Q) empowers LGBTQIA+ students in the second year and beyond by fostering a community of learning, celebration, and solidarity. T2 is a weekly group for transgender and non-binary students as well as those questioning or exploring their gender. Ace of Clubs is a group for students who identify on the asexual or aromantic spectrums and meets twice a month to provide a space of support, discussion, and engagement.

OFFICE OF MULTICULTURAL AFFAIRS

The Office of Multicultural Affairs (OMA) is committed to building an inclusive campus that promotes acceptance and appreciation of the diversity of each individual. Through our signature Professionals of Color Lecture Series, cultural heritage celebrations, and social justice programs, OMA enhances student learning by fostering an appreciation for the history, tradition, and culture of different ethnic groups and empowering students to be active and engaged learners.

OMA also provides retention programs that engage all students while also intentionally advocating for students from historically underrepresented communities. These programs help students achieve personal and academic success by promoting a smooth transition from high school to college, creating a sense of belonging, and connecting students to resources and mentors. High-impact learning experiences are built into programs and activities to motivate students to develop lifelong skills that will benefit their lives and careers after college.

TITLE IX AND GENDER EQUITY

The scope of Title IX of the Education Amendments of 1972 is vast – prohibiting sex or gender based discrimination in all federally funded education programs or activities. Put simply, Title IX ensures equal educational opportunity for all. At GVSU our Title IX efforts extend beyond compliance to creating a welcoming environment free of hostilities that may adversely affect our students' educational pursuits. One of our primary goals is to reduce sexual harassment and violence on our campus through increased education and understanding of consent and active bystander behaviors. Encourage your student to learn more about what it means to ask for consent, to give consent, and to be an active bystander who intervenes when others are in need. A great place to begin learning about this is at our "It's On Us" campaign webpage: www.gvsu.edu/itsonus/.

WOMEN'S CENTER

The Women's Center is committed to creating meaningful learning around gender and advocates for gender justice through the education, engagement, and empowerment of students and the greater Grand Valley community.

The Women's Center is a place where all are welcomed and affirmed. The Center hosts a variety of programs and services



each year to enhance your student's learning. Examples include a rotating art program, regionally and nationally known speakers and educational workshops, student organization, and ACTIVATE, our service-learning program that pairs students with nonprofit organizations in the community that further gender justice efforts.

The Women's Center has a fun location in the Russel H. Kirkhof Center that provides a safe place for people to relax in our lounge, complete academic work at study tables, host meetings, use our resource library, or seek resources and referrals from our staff on a variety of topics such as sexual assault, dating violence, service learning, food resources, or any other issue with which your student may be dealing.

The Women's Center also offers many opportunities to enhance coursework including internships for students in any major, as well as volunteer and employment opportunities.



Frederick J. Antczak, Ph.D., Dean
College of Liberal Arts and Sciences

"In the long run, what is most "practical" for students in college to study is what they're good at, and what they are excited about. As the website for each major can show you, there are jobs for graduates in any major. So choosing a course of study — and getting the most for the money and the irreplaceable time they will invest — is a choice about how to make a life as well as how to make a living."

LAKER FINANCES

Even with Grand Valley's tuition being below the state average for public universities, the cost of college is a major investment. The Financial Aid Office can help maximize your investment by determining your unique needs and how to effectively meet them. Contact the Financial Aid Office to learn about the resources available.

FINANCIAL AID

The Office of Financial Aid & Scholarship is located in the Student Services Building on the Allendale campus. The Financial Aid Office strives to educate students and their families with a variety of options to pay for the expenses associated with college. We look forward to working with you and your student.

Important Dates

- **MID-JULY:** Charges assessed and fall bills created
- **AUGUST:** Fall payment deadline
- **MID-NOVEMBER:** Charges assessed and winter bills created
- **DECEMBER:** Winter payment deadline

Planning Ahead

- Students need to file the FASFA each year by **MARCH 1** in order to maximize their financial aid from Grand Valley and the State of Michigan
- Returning students receive their financial aid award each year in early June
- Students should check their GVSU email account regularly in order to receive important university communications
- For more information, please visit www.gvsu.edu/financialaid or contact our office at (616) 331-3234 or finaid@gvsu.edu.

STUDENT EMPLOYMENT

If your student is interested in part-time employment while in school, they can begin looking for employment right now. To find a job, visit www.gvsu.edu/studentjobs and click "LakerJobs Student Login."

SCHOLARSHIPS

Grand Valley offers over 400 endowed and department scholarships. The majority of scholarship deadlines fall between February 15 and March 1 for the following academic year. There are a wide variety of scholarships which may be awarded based on interests, academic performance, special talents or major. Many of these scholarships are made possible through generous donations. Students may apply for these scholarships each year through myScholarships, an online application system. Please visit www.gvsu.edu/scholarships for more information.

MONEYSMART LAKERS

MoneySmart Lakers is a financial literacy program on campus specifically focused on educating students about basic financial skills for their future. We provide information through group presentations and individual appointments. You can visit the MoneySmart Lakers website at www.gvsu.edu/moneysmart/. Or email moneysmart@gvsu.edu with additional questions on topics such as creating a spending plan, learning how to build good credit, or understanding loans and repayment.



BANKING AND ATMS

Students should understand how to coordinate checking needs, ATM access, electronic account transactions, and access to debit/credit cards. A wide variety of area banks and credit unions are available in Allendale, Standale, Jenison, Grandville, and Grand Rapids.

The following banks have ATMs on campus: Lake Michigan Credit Union (LMCU), Fifth Third Bank (5/3), and PNC. The ATMs are located in various locations across campus.

STUDENT ACCOUNTS

Electronic Bill (ebill)

All registered Grand Valley students will receive an email during the last week of July letting them know their electronic bill is available for viewing. Your student may give permission for others such as their parents or sponsors to view their bill as well.

Online Payments

Bills may be paid online with a credit card or an electronic check. A \$20 convenience fee is assessed for each credit card transaction. Grand Valley accepts Visa, MasterCard, and Discover. Electronic Check Payment transactions are not assessed a processing fee.

Grand Valley Deferment Plan

Grand Valley offers a deferment plan that allows payments over the semester to cover any balance on your student's account. The account balance is divided into four monthly payments each semester. There is a \$40 charge each semester to participate in the Deferment Plan.

Charging Books

If your student has excess financial aid after the semester bill is paid, they may charge books to their student account at the Laker Store prior to the first week of classes.

Excess Financial Aid Refunds

For students who have accepted loans in excess of their GVSU charges, financial aid is refunded to your student during the second week of classes. To obtain their financial aid refund:

- sign up for direct deposit and have the excess deposited in a designated bank account; or
- have a check, made payable to the student, mailed to their permanent address.

Communication with Parents/Family

The amount of your student's account information that Grand Valley may give to parents is very limited without consent from the student. If your student would like the Student Accounts Office to be able to discuss their account with you, they may do so by logging on to My Banner, clicking on the "Messages/Documents" tab, then clicking on "Student Accounts Office Release of FERPA information."



LAKER LIVING

Whether your student is living on campus or commuting from off campus, there are important things to review and consider. For some, this may be the first time your student lives away from home. This can be both an exciting and anxious time. Learn about Laker Living and know that you and your student are well informed.

HOUSING AND RESIDENCE LIFE

The Office of Housing and Residence Life provides your student with an opportunity to live independently in a supportive environment on campus. The Housing and Residence Life (HRL) staff is available to assist in this transition by focusing on the development of your student and their fellow residents. HRL provides resources and opportunities for student learning and success by collaborating to build inclusive residential communities and experiences.



Prior to Move-In

For housing assignment information and an extensive list of what to bring, including items prohibited in on-campus housing, visit www.gvsu.edu/housing and reference the Move-In Guide provided at Orientation. All residents are encouraged to have renters insurance coverage or check coverage provided under their family's homeowners policy.

Benefits of Living On Campus

GREAT CHOICES: Our selection of housing options offers a variety of styles and price points, including some of the newest in the state.

ACADEMIC SUCCESS: Students who live on campus earn higher grades, are more likely to graduate, and enjoy a more rewarding college experience than off-campus students.

CONVENIENCE: Living on campus puts them closer to faculty, classes, computer facilities, the library, the fitness center, dining facilities, and more. Our academic-year leases, which include utilities, give students flexibility.

LEADERSHIP: Students residing in on-campus housing have a variety of leadership opportunities including Community Council, Residence Housing Association, and National Residence Hall Honorary. Students are also employed as Resident Assistants and support staff throughout the department.

LASTING FRIENDSHIPS: Living on campus is a great way to make new and lasting friends.

SUSTAINABILITY: From campus recycling and composting to energy savings competitions, sustainability is a way of life at Grand Valley. All new building projects are built to Leadership in Energy and Environmental Design (LEED) silver standards or better.

ON-CAMPUS EMPLOYMENT: Students who choose to work on campus have plenty of convenient employment options. They can earn money, develop discipline, and build references all close to where they live and learn.

NATURAL BEAUTY: Live among the beautiful wooded ravines and natural green spaces that make the Allendale Campus one of the most scenic campuses in Michigan.

SAFETY, SECURITY, AND HEALTH: Working closely with the Campus Health Center, GVPD, and the University Counseling Center, our staff provide residents a safe and secure environment in which to learn, live, and work. All living centers feature card access security and 24-hour on call duty rotation.

SUPPORT NETWORK: Each living center has a support network that includes a Living Center Director, Resident Assistant, and Assistant Living Center Director.



Residence Education

Utilizing the challenge, support, and engagement model of student success, Housing and Residence Life provides students opportunities to engage in out of the classroom learning that compliments Grand Valley's liberal arts curriculum. Community programming efforts contribute to the following learning outcomes: Community Building, Academic Success, Citizenship, Intercultural Competency.

Housing and Residence Life partners with other campus departments to offer services that intentionally aid in the success of first year residential students. The North Campus Success Center is located in North C Living Center and offers advising, career counseling, and tutoring in addition to other support services.

Roommate Relationships

A successful roommate relationship is one in which residents are able to co-exist safely and respectfully. Clear, open, and frequent communication between roommates is necessary for effective roommate relationships. The most common areas of conflict pertain to cleaning, safety, and guests. Most roommate conflicts can be avoided with proactive communication and the open sharing of expectations between residents. Students experiencing concern or conflict with a roommate are encouraged to consult their community RA for assistance. Room change requests are reviewed on a case by case basis, facilitated based on space availability, and considered only after the completion of required meeting and mediation efforts.

Housing Staff

All on campus residents are assigned a Resident Assistant (RA)— an upperclass student selected and trained to build community and serve as a resource to students. RAs are supervised by an Assistant Living Center Director, a full-time graduate student pursuing a Masters Degree in College Student Affairs Leadership in Grand Valley's College of Education and a Living Center Director, a masters-level professional responsible for the oversight and administration of an on campus community. RAs, Assistant Living Center Directors, and Living Center Directors comprise our staff and participate in a 24/7 on call rotation for emergencies.

Sophomore and Beyond

We believe the value of living on campus extends beyond the first year. Statistics indicate that students who reside on campus have higher grade point averages as well as higher graduation rates. The housing selection process for returning students is done on a first come, first serve basis and allows students to select the housing of their choice through the myHousing system. Students with a deposit already on file simply need to apply, select their roommates, and monitor their myHousing overview for the assigned time to select their housing. Students will get more info on this process early in the fall semester.

We have a variety of on-campus apartments available to students after their first year on both the Allendale and Grand Rapids campuses. Additionally, we offer living-learning communities for students based around themes or areas of academic interest. These communities include Art Housing, the Frederik Meijer Honors College, the Movement Science House, the International House, the Gender Justice House, and Women in Science and Engineering (WISE). Professional and graduate staff members in these communities work closely with a faculty coordinator to provide a rich living-learning experience that extends outside of the classroom (programs, events, field trips, and research).

If your student would like to return to housing or if you would like more information on the special communities we offer, visit www.gvsu.edu/housing/.



Diana Lawson, Ph.D., Dean
Seidman College of Business

"At GVSU opportunities to learn abound (KNOW). You'll practice what you're learning both in the classroom and in the community (DO). Ultimately, this transformational experience will prepare you to make a difference (BE). Know-Do-Be. It's all here at GVSU."

DINING ON CAMPUS

Eating On Campus

GVSU is proud to offer a dining program that provides variety, convenience, and flexibility with dynamic and valuable Meal Plan options. Students in traditional, suite-style, and apartment-style living centers receive a Meal Plan as part of their housing contract. South Campus residents and commuters are encouraged to purchase a Meal Plan for their value and convenience. In 2016, 70.6% of students who purchased a meal plan, bought by choice, they weren't required!

Meal Plan Benefits:

Save Time

- No planning meals.
- No grocery shopping.
- No cooking.
- No dirty dishes.
- No car? No problem. 22 locations conveniently located to serve you Meals between the hours of 7:30 a.m. - 12 midnight.

Save Money

- Enjoy discounted Meal Plan pricing.
- Ex: All-inclusive dining at Fresh Food Co. using a 14+ Meal plan is just \$6.19/meal. Lunch without a Meal Plan is \$10.25. You save \$4.06 per meal . . . up to \$57 per week . . . and \$853 per semester.)

Meal Plan Options

There are nine Meal Plan options available including weekly and semester plans. Meal Plans consist of two features: Meals and Dining Dollars.

Meals

Meals are offered in six of the nine Meal Plan options. Use Meals to enjoy all-inclusive dining in the Fresh Food Company and to purchase Meal combos at various dining locations. Each time a Meal is used at the Fresh Food Company or a Meal combo is purchased; one Meal is subtracted from the Meal balance. Students on weekly Meal Plans may use up to four Meals per day. Weekly Meals expire at the end of each week while Semester Meals roll from week to week and into the winter semester.

Dining Dollars

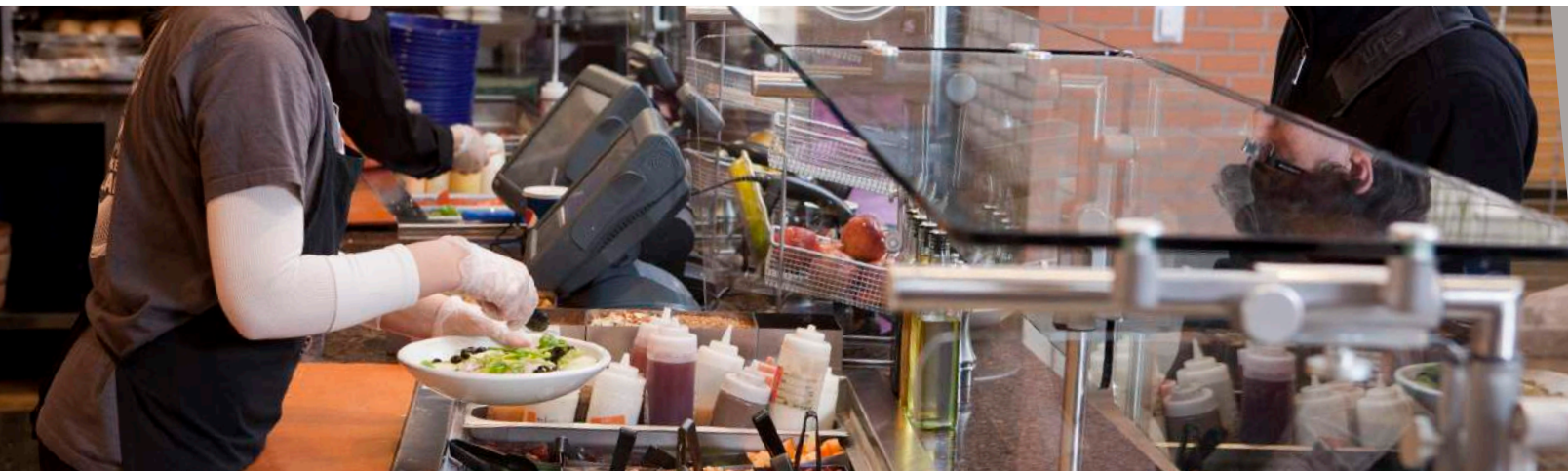
All nine Meal Plans include Dining Dollars. Dining Dollars are a debit account attached directly to your student's Meal Plan. Dining Dollars are accepted in all Campus Dining restaurants, C-Stores, coffee shops, and concession stands. They can be used for beverages, snacks, or full Meals at any time. Your student can check their account balance online, at Campus Dining registers or by using the GV Mobile app. You or your student can add dollars at www.gvsufood.com or by visiting the Campus Dining office in 100 Commons on the Allendale Campus. Dining Dollars carry over from the fall to winter semester.

How It Works

The barcode on the back of your student's GVSU photo ID card serves as their secure pass to a plan and the ability to eat when and how they like. Meals and Dining Dollars must be used before they expire at the end of the academic year. Purchases are non-refundable.

Find Out More

Go to www.gvsufood.com for a full listing of Meal Plan information.



TRANSPORTATION

Cars

Grand Valley is a permit or pay to park campus. Students may purchase parking permits from Parking Services at either the Allendale or Grand Rapids Public Safety locations. Specific parking lots are designated for use by both residents and students who commute. No cost parking is available by utilizing the free transit system operating between both campuses, with park and ride locations centralized between Allendale and Grand Rapids. Charging stations are also available on both campuses to accommodate electric vehicles; a parking permit is required while charging.

Bikes

Bikes are encouraged on campus and must be stored outside; there are bike racks available. Bikes are not permitted in university buildings, including living center rooms. Students should register bikes with GV Police Department. The Campus Recreation bike shop also offers low-cost bike rental and a self-service maintenance station with mechanics on staff to assist.

Car-free Lifestyle

We all make choices according to what is important to us. Many of us are concerned about:

- air quality and global climate change, and would like to take part in reducing greenhouse gas emissions;
- the obesity epidemic and the need for physical activity, and want to support walkable and livable communities;
- minimizing stress and maximizing use of time and energy;
- dependence on dwindling oil reserves, and want to reduce petroleum consumption; and
- the expense (both time and money) of maintaining and operating an automobile.

Whatever a student's motivation, our campus is an ideal place to try out a car-free lifestyle and to participate in a healthy and sustainable community.

Is Having a Car on Campus Worth the Cost?

Using a personal car to get around campus may be an invitation to frustration for your student. Resident students are limited to parking in designated residential lots with exceptions during evenings and weekends. The cost of auto ownership, vehicle repairs, gasoline, insurance, and parking can add up to a large expense.



Jeffrey Potteiger, Ph.D., Dean
The Graduate School

"Successful college students are actively engaged inside and outside the classroom. Talk about taking advantage of the many different opportunities that will be available."





Free Bus Service — The Rapid

One way to get around campus and off-campus is by using the bus system. The Rapid bus system is free with a valid GVSU ID seven days a week. Real-time bus arrival information is available from the 2020 Information Desk, and with mobile applications such as Rapid Connect, or MyStop App.

Route 50 runs throughout the day and night stopping at the Meijer store in downtown Standale. Your student is also eligible with their student ID to ride free on all of The Rapid's fixed bus routes. This is a great resource that connects them to shopping, cultural, and entertainment venues throughout the greater Grand Rapids metro area. All the buses have bike racks.

The Rapid Bus Routes

- **CAMPUS CONNECTOR ROUTE — ROUTE 50** A connecting route between the Allendale and Pew Grand Rapids Campus. Weekday service frequency approximately six minutes during peak hours of 7 a.m. – 6 p.m.
- **NORTH CAMPUS EXPRESS — ROUTE 37** An off-campus shuttle route that serves the perimeter apartment complexes adjacent to the Allendale Campus. Weekday service frequency is approximately six to seven minutes.
- **SOUTH CAMPUS EXPRESS — ROUTE 48** A shuttle that services both south campus and other off-campus apartment complexes adjacent to the Allendale Campus. Weekday service is approximately four to five minutes.
- **APARTMENT CONNECTOR — ROUTE 85** Combined 37 and 48 routes for early morning and weekends.

(Weekend bus service available during Fall & Winter semesters)

Transportation Safety

The main campus in Allendale covers more than 1,300 acres. Every day pedestrians, buses, cars, cyclists, and delivery trucks are all making their way around campus. This poses a significant challenge in maintaining a safe and pleasant environment for all. Many find that walking combined with bicycling and using the bus is the most convenient and practical way to get around.

Traffic safety is everybody's responsibility. Whether walking, biking, driving, or just getting off the bus, we all help make our community a safer place by knowing the traffic rules and following them.

Remind your student to look before stepping out into a crosswalk. The Grand Valley campus is a busy place and it's filled with people who don't have a lot of time to waste. When your student is walking, thinking about getting to their next class on time, they don't want to find themselves stepping in front of a driver who is also in a hurry.

To Learn More

Complete bus information is available at www.gvsu.edu/bus and www.ridetherapid.org/.

LIVING OFF CAMPUS

Some students choose to live at home for a variety of reasons. For many, the ability to reduce costs of attending college is a factor. Students living at home still have many of the same challenges as those students who move away from home and reside on campus. Students are often feeling anxious about whether they will be accepted, fearful of the difficulty of their classes, and wondering how they will make friends in this new place.

At the same time, commuter students have many of the same opportunities as students living on campus. Commuter students make up a large portion of the new students attending Grand Valley each fall. It is important for families to encourage their commuter students to be involved in the vibrant campus-life experience; several things can help get your student engaged in the campus community.

Recommendations for Your Student

- Attend Transitions, the new student orientation.
- Identify some student organizations to participate in, or look for other involvement opportunities in intramural sports, music, or theatre.
- Form a study group with classmates.
- Purchase a Campus Dining Meal Plan and eat with other students while on campus.
- Meet new students and expand their circle of friends.
- Review the university events calendar to learn about what is happening on campus at www.gvsu.edu/events/.
- Pick up a copy of the *Lantern*, the student newspaper that is distributed every Monday and Thursday at campus locations, or check out their online updates at www.lantern.com/.



Traveling To and From Campus

Students attending Grand Valley live throughout the West Michigan area. They commute to classes on multiple campuses. Review the following topics with your student regarding their travel.

- Parking rules and regulations: permits, designated areas
- Carpooling
- Campus bus service options: park and ride
- Traffic congestion during the first couple of weeks — arrive early
- School closing policy
- Traveling during the winter
- Contacting professors when absent from class
- Emergency contact procedures
- Automobile road service plan



LAKER LIFE

With community service opportunities, leadership development initiatives, more than 400 registered student organizations, and music, dance, and theatre opportunities, your student has a wide variety of options to be involved in extracurricular activities both on and off campus. Learn more about the great opportunities Grand Valley offers.

STUDENT LIFE

Your students ***Become More*** through participation in a variety of campus events and activities. On average, students spend 30 percent of their time in class during a normal week of college life. Historically, students who are successful in school have developed a plan for how they will spend the remaining 70 percent of their time. Employers look for employees who have a broad range of experiences and are comfortable working with others.

Russel H. Kirkhof Center

Located in the center of campus, the Russel H. Kirkhof Center, our student union, provides plenty to do between classes. The big screen theater shows movies four times daily; next door the games room is filled with pool tables, foosball tables, and several gaming systems. Games are available at the 2020 Information Desk by checking them out with a student's ID.

The lounge areas located throughout the building create great places for students to study alone or with a group and the dining options add the student's favorite incentive — food! A quiet, spiritual space is also offered in the prayer/meditation room.

Get Involved

The Office of Student Life, located in the Russel H. Kirkhof Center, creates an exciting environment for the campus community. Our experienced staff, along with graduate students and several student employees, work diligently to make sure there is always a lot happening on campus.

Student Life provides opportunities for students to ***Become More*** by joining a student organization, actively engaging with their communities, serving as leaders on campus, and gaining real world experience. Encourage your student to be successful by getting involved outside the classroom.





Commitment to Community Service

The Community Service Learning Center (CSLC) provides students with opportunities to get involved volunteering in the community and further develop as active citizens. As students spend time providing service for local nonprofit organizations, they gain an understanding of themselves, the society in which we live, the importance of giving to others, and helping to make the world better for everyone.

Consultants in the CSLC help students match their passion with local needs by hosting nonprofit volunteer and internship fairs each semester, coordinating campus-wide days of service, overnight local service trips, and much more! The website, www.gvsu.edu/service, provides information about upcoming opportunities.

Sororities and Fraternities

Almost seven percent of our student population belongs to a sorority or fraternity on campus. The academic support and social engagement provided by these groups encourage excellence in leadership, scholarship, service, and philanthropy. Parents attest to the personal growth and motivation shown by their students as part of the brotherhood or sisterhood experience.



Leadership Development

The Laker Leadership Programs, within the Office of Student Life, provide opportunities for leadership development which encourage growth as life-long leaders of integrity and social change within their lives, professions, and communities. First year students are encouraged to participate in the First Year Leadership Experience, a 6-week program designed to assist students in creating and enhancing their personal philosophy of leadership while developing basic leadership skills and learning about all of the leadership opportunities the GVSU community has to offer.

Programs are offered in many formats including one-day workshops, multiple week seminars, leadership lectures, networking receptions, and full day conferences. Topics range from leading with strengths (using StrengthsFinder®), inclusive leadership, and community leadership. Additionally, student leaders are recognized on campus through the *I am Grand Valley* leadership recognition program and the national leadership honor society, Omicron Delta Kappa. Your student may choose to participate in one or all of the programs during their Grand Valley experience. Visit www.gvsu.edu/leadership to learn more and sign up for a newsletter.

To Learn More

Visit our website at gvsu.edu/studentlife, call (616) 331-2345, or follow @GVSUStudentLife on social media for more ways to connect to the GVSU community.

More About Student Life

Campus Life Night is one of the biggest events on campus in the fall for all students; it is “one stop shopping” for students looking to get involved. Almost all student organizations will host a table at this event and offer information about their organization, as well as how to join. Campus Life Night is held annually the Tuesday after Labor Day.

Students can also explore our website and research the numerous student organizations available. All groups are listed and there is information on how to connect with them posted at www.gvsu.edu/orgsync/. New students can join OrgSync with their student login to get information about organizations and Student Life.

Traditional Events

Each year students are able to take advantage of many traditional Laker events. The Laker Traditions Team plans several major events such as, Laker Kick-Off Party, Family Weekend, Homecoming, Founders Day, Battle of the Valleys, Sibs and Kids Weekend, Presidents' Ball, Intercultural Festival, and ExtravaGRANDza. These events help to build community and are part of the Grand Valley experience. All dates are listed on the Grand Valley events calendar.



Spotlight Productions

Our campus programming group, Spotlight Productions, supplies the campus with weekly entertainment varying from large concerts, and movies to comedians, lectures, and interactive games. Students can gain valuable experience through the planning and implementation of bringing small and large productions to campus.

STUDENT ORGANIZATIONS

Being a member of a Registered Student Organization (RSO) is a great way to get involved while meeting people with similar interests. Your student's experience in an organization will vary. Some students are very invested and take on leadership roles, while others use their membership as a way to take an hour of their week to participate in an activity or meeting.

Types of Registered Student Organizations

- Academic and Professional
- Campus Programming
- Club Sports
- Cultural
- Fraternities and Sororities
- Graduate Students
- Honor Societies
- Housing and Residential Life/
Community Councils
- Interfaith
- Media
- Performing Arts
- Professional Fraternities
- Service and Advocacy
- Special Interest
- Student Senate



Questions Your Student Should Ask When Learning About Registered Student Organizations (RSO)

When are the meetings?

Make sure meeting times fit into your class schedule.

Do you charge a membership fee or dues?

Any financial commitments need to fit into your budget.

Are new members expected to do anything extra?

If so, how long will I be considered a new member?

Do not join a group if you feel uncomfortable about membership requirements. Also, the university has a very clear policy against hazing.

Who is your campus advisor?

Every RSO has a faculty/staff advisor. This person can assist you with any questions or concerns.

What kinds of awards have you won and what are you involved in on campus?

These are two great questions every organization should be able to answer!

What If My Student Cannot Find An Organization In Which They Are Interested?

It's easy for students to start a new organization. They only need four members, a faculty/staff advisor, and a constitution. Our Student Life staff is available to help.

Staying Informed

With so many things happening on campus all the time – it's hard to know what to do! Students will want to read the *Lantern*, our newspaper, which is published twice weekly. They can either read it online at lanthorn.com or pick up a copy from several areas throughout campus.

Our radio station (WCKS) and cable access television station grandvalleytv.com can also be found online. Besides keeping students current with Grand Valley information, all these forms of media offer wonderful opportunities for internships and ways for students to gain practical experience.

Grand Valley's events calendar (gvsu.edu/events) can also be accessed online for the most current information regarding events on campus. Students should get in the habit of checking this site regularly to make the most of the events happening. In addition, Student Life is very active on social media.



"Learning does not happen in isolation. Encourage your student to take full advantage of what GVSU offers and actively seek out the programs and services that will help them to further their growth and development and become the best versions of themselves."



STAYING ACTIVE

Campus Recreation

Campus Recreation, located in the Recreation Center on the Allendale campus, offers students programs and services for fitness, wellness, outdoor adventures and competitive sports throughout the year. Campus Recreation enhances and engages the GVSU community by providing inclusive and diverse recreational opportunities that inspire participation, promote health and wellbeing, and encourage student development and success.

Fitness and Wellness Services

Over 50 group exercise, mind/body, and spinning classes are taught weekly by a staff of certified instructors. Classes offer effective and safe workouts in a fun, friendly, and social atmosphere. To encourage healthy lifestyles, Fitness and Wellness offers a variety of services which include massage, nutrition, swim lessons, personal training, free Ufit plans, small group training, equipment orientation, fitness assessment, health screenings, and CPR and First Aid classes. Many of these services are free or at a reduced cost for students.

Club Sports

The Club Sports program provides opportunities for students to remain physically active in sports throughout their college career. Participation promotes sportsmanship, aids in the development of skills, encourages regular physical activity, and membership is open to all students.

Club Sports provide an exciting athletic alternative that bridges the gap between intramural play and varsity athletics. There are currently over 55 club sports organizations that range from recreational to highly competitive. Many of our team sports are

affiliated with national associations and compete on a regional and national basis. Competitive teams often have coaches as well as faculty advisors. Whether students are interested in a high level of competition, learning a new sport or skill, or to simply have fun and meet new people, they will enjoy the recreational fun offered through club sports. Specific clubs and contact information can be found at www.gvsuclubsports.com/.

Intramural Sports

The Intramural Sports program allows students to play and compete with their peers at GVSU. Over 20 intramural sports for men's, women's, co-recreational, and individual divisions of play are offered in the fall, winter, and spring semesters. Intramural sports promote student development in an environment where sportsmanship, safety, and fun take a higher priority over winning and losing. A listing of the intramural sports offerings can be found at www.gvsu.edu/rec/.

Outdoor Adventures

The Outdoor Adventure Center offers a variety of programming and resources for the outdoor enthusiast, including:

- Outdoor skills workshops
- Trips
- Indoor rock climbing
- Bicycle & backpacking equipment rental
- Bicycle maintenance

To Learn More

A complete list of schedules, registration, employment opportunities, and other information can be found at www.gvsu.edu/rec/. For Recreational facilities information, please visit www.gvsu.edu/sportsfacilities.

MUSIC AND DANCE OPPORTUNITIES

Students of all majors are encouraged to pursue their performance interests at Grand Valley, even if they are not planning to major in music or dance. Your student can pursue their passion in the fine arts at Grand Valley through one or more of the following opportunities:

- Concert Bands
- Choral Ensembles
- Dance Ensembles
- Jazz Ensembles
- Laker Marching Band
- Momentum (Dance)
- Opera Theatre
- Percussion & Steelband Ensembles
- Symphony Orchestra

Encourage your student to visit www.gvsu.edu/music and fill out an *Interest Form* to begin a conversation with the Department of Music & Dance about specific interests.



THEATRE OPPORTUNITIES

All students are invited to continue their participation in drama activities at Grand Valley, regardless of whether or not they're planning a major in theatre. Encourage your student to become involved in theatre, and to attend university stage productions each year. Your student has the following opportunities in which to do so:

- Production and performance opportunities
- Shakespeare Festival
- Intercultural Diversity Show
- The "Bard-To-Go"
- Performance Studio Series
- Musical/Opera Theatre

Grand Valley Theatre welcomes all students who wish to volunteer their time and serve as vital parts of stage productions. Working as crew, ushers, actors, stagehands, or shop assistants, your student will develop important skill sets in creative thinking, group problem solving, self-expression, communication, ethical awareness, and other areas.

For complete information on Grand Valley's Theatre program, visit www.gvsu.edu/theatre/.



LAKER RESOURCES

Remember to keep this guide throughout your student's academic career, and use it as a quick reference to the wide variety of resources available.



MetroHealth

GVSU Campus Health Center

Metro Health provides convenient care for students and faculty right on campus. Count on us for general medical care.

Medical Services:

- STD Testing
- Women's Health
- Complete Physicals
- Immunizations
- Flu Shots
- Sports Medicine
- Lab Tests
- Allergy Care



Family practice physicians and additional services are available at Metro Health Allendale, just two miles west of campus.

Protect Your Student's Health

Most vaccines are given in childhood, but the Centers for Disease Control and Prevention (CDC) and the American College Health Association recommend certain vaccinations for college students. Grand Valley State University does not require students to obtain vaccinations, but to protect their health incoming college students should consider obtaining the following vaccinations:

Immunizations Recommended for College Students:

- Meningococcal (Meningitis)
- Tetanus, Diphtheria, Pertussis (Tdap)
- Human Papillomavirus (HPV)
- Annual Seasonal Influenza (Flu)

Childhood Vaccines

- Measles, Mumps and Rubella (MMR)
- Hepatitis A & B
- Varicella (Chickenpox)
- Polio

gvsu.edu/campushealth (616) 252-6030

gvsu.edu/fhc (616) 988-8774

Career Center

A successful career plan begins as early as a student's first year and can make their college years more purposeful and rewarding. The Career Center helps students transition from student to professional through the following resources:

- Individual assistance
- Career fairs and employer events
- Workshops and presentations
- Career Courses (US 102 & 301)
- Career exploration, planning & preparation
- LakerJobs—GVSU's FREE web-based service providing access to professional jobs and internships posted by employers looking to hire GVSU students and alumni
- Focus II—GVSU's FREE online, personalized career and education planning tool



gvsu.edu/careers (616) 331-3311

CAMPUS RECREATION

Campus Recreation offers programs that enhance the quality of life for the Grand Valley community. We strive to develop a culture that values student learning and academic success, as well as lifelong health.

FITNESS SERVICES

- UFit plan and Personal Training (Group and Individual)
- Fitness Testing and Equipment Orientations
- Wellness
- Health Screenings, massage, nutrition
- CPR and First Aid Classes
- Group Exercise
- Pilates, Turbokick, ZUMBA, SPIN, Yoga, INSANITY, TRX, and more!
- Over 50 different classes a week

COMPETITIVE SPORTS

- Intramural Sports
- Over 25 sports and leisure activities for men's, women's and co-recreational divisions
- Club Sports
- Over 55 team sports that range from recreational to highly competitive
- Potential to compete against other regional and national teams.



gvsu.edu/rec (616) 331-3659 rec@gvsu.edu

Children's Enrichment Center

The framework to our program philosophy is grounded on our values that include:

- Access
- Education
- Family
- Character
- Community



With a growing number of nontraditional students earning degrees, the Children's Enrichment Center is an on-campus resource that strives to create an environment that is dedicated to early learning and care for young children and families.

Disability Support Resources

Disability Support Resources (DSR) provides support services and accommodation that enhance the environment for persons with disabilities, and to help educate the university community on disability issues.

- Advising Assistance
- Alternate Format Textbooks
- Alternative Testing
- Assistive Technology
- Campus Links (Red Residential and Blue Non-Residential)
- Documentation To Professors
- Learning and Study Skills
- Note-Taking Assistance
- Resource Agents and Liaisons
- Tutoring
- Van Transportation Service

gvsu.edu/dsr (616) 331-2490

FREDERIK MEIJER HONORS COLLEGE

College Offerings

- Personalized instruction
- Interdisciplinary education
- Living/learning community
- Undergraduate research opportunities
- Cultural experiences
- Honors status

The Frederik Meijer Honors College offers a distinctive learning community and extraordinary opportunities for academically motivated students. Both incoming first-year students and continuing students are eligible to apply. For more information on qualifications and procedure go to the website below.

Disability Support

Disability Support Resources provides support services and accommodations that enhance the environment for persons with disabilities and help educate the university issues.



SAFETY • SERVICE • SUPPORT



The Grand Valley Department of Public Safety is a multi-disciplined department.

We strive to provide a safe and secure environment in which to work, live, and learn.

In the event of an **emergency** dial **911**. For nonemergency assistance, please call (616) 331-3255.

Services

Police, Security, Parking

Emergency Management

Alerts and Notifications

Awareness and Safety Programs

Lost & Found

Community Events

Bicycle Registration

GVSU Guardian **GVSUAlert-)**

Stay Safe.
Stay Connected.

Sign Up for Text Alerts
www.gvsu.edu/gvsualert



Police

www.gvsu.edu/gypd
(616) 331-3255

Security

www.gvsu.edu/security
616-331-6677

Parking

www.gvsu.edu/parking
(616) 331-PARK

Emergency Management

www.gvsu.edu/emergency

TITLE IX

PREVENTING SEX-BASED DISCRIMINATION
AND SEXUAL HARASSMENT

WHAT IS TITLE IX?

WHO DOES TITLE IX APPLY TO?

HOW DO I MAKE A REPORT?

WHAT ARE MY RIGHTS?

WHAT CAN I EXPECT?

WHO CAN I TALK TO?



GRAND VALLEY
STATE UNIVERSITY
DIVISION OF
INCLUSION AND EQUITY



Milton E. Ford LGBT Resource Center

10th Anniversary!

The **Milton E. Ford LGBT Resource Center** provides resources, services, education, leadership programs, and support to meet the needs of GVSU's diverse LGBTQIA+ community.

The LGBT Resource Center Provides:

- > A **safe and affirming space** for the LGBTQIA+ community on campus.
- > **Educational workshops** supporting the development of allyship skills for students, faculty, staff, and community members.
- > **Services and resources** supporting a more inclusive and welcoming campus climate.
- > **Social and educational programming.**

New Hours! Open Monday to Friday, 9am - 6pm.

gvsu.edu/lgbtrc (616) 331-2530



Veterans Network

The Veterans Network provides support services and resources to active service members, military veterans, Guard/Reservists, and family members.

The Veterans Network coordinates the GVSU Peer Advisor for Veteran Education (PAVE) program which pairs a returning student veteran with each entering student. The Veterans Network also provides training for faculty and staff members; outreach with community and governmental agencies; events for military veterans; and support and assistance for the GVSU Chapter of the Student Veterans of America (SVA) in creating a channel for student veterans to connect and support one another.

GVSU Student Veterans' Lounge: Kirkhof Center-Second Floor (Allendale Campus)



Office of Multicultural Affairs

The Office of Multicultural Affairs (OMA) promotes an understanding and appreciation of an inclusive campus community that values diversity, background, and perspective of each individual.

OMA offers:

- a welcoming environment with gathering space;
- a wide variety of helpful resources and referrals;
- academic support program, such as the Multicultural Cohort Programs;
- diversity lecture series and cultural heritage celebrations.

gvsu.edu/oma (616) 331-2177



Student Academic Success Center (SASC)

Academic advising engages students in the process of exploring and defining their academic and career goals, as well as in creating effective strategies to achieve these goals.

The Student Academic Success Center supports students by providing the following services in one central location.

Services

- Tutoring
www.gvsu.edu/tc
- Structured Learning Assistance (SLA)
www.gvsu.edu/sla-pass
- Science Success Center
www.gvsu.edu/ssc
- Learning and study skills development services
- Premajor Advising
www.gvsu.edu/sasc/undecided
- LAKER Academic Center (for student athletes)
www.gvsu.edu/lakeracademiccenter
- TRiO Student Support Services
www.gvsu.edu/ssss



Student Employment

About Student Employment

Student Employment aids students in obtaining employment that will help finance their education and develop work skills for their future career choice.

Students can visit our site and log in to LakerJobs if interested in part-time employment.

- There are over 3,500 student employees working on Grand Valley's campus.
- Studies show that students who work, do as well or better academically as compared with students who do not work.
- LakerJobs is updated daily with new job postings. Previous job searches can be saved, and students can receive notifications when new jobs are posted.
- The Student Employment Office puts on annual events such as the Summer Job Fair and Student Employee Appreciation Days.

gvsu.edu/studentjobs (616) 331-3238

STUDENTLIFE

BECOME MORE

Student Life is your way to experience all that Grand Valley has to offer outside of the classroom.



gvsu.edu/studentlife (616) 331-2345



lakerstore

Our Products and Services

GVSU Laker Store is your source for textbooks, Grand Valley clothing, gifts, school supplies, art supplies, and technology (computers, tablets, headphones, and accessories). Stop by and we will be happy to help you find whatever you're looking for!

Two Locations to Serve You

ALLENDALE:

Located in the Marketplace on Campus Drive.

GRAND RAPIDS:

Located in Building C of the DeVos Center on the Pew Campus.

lakerstore.gvsu.edu (616) 331-3520

SUSTAINABILITY: A CORE VALUE



The Office of Sustainability Practices provides Grand Valley students with the knowledge and resources necessary to become better stewards and responsible global citizens.

We encourage students to become more involved with sustainability efforts at Grand Valley and around the world by offering the following:

- Sustainability related major, minor, emphasis, and certificate programs
- Volunteer, internship, and associate positioning opportunities
- Student-led projects such as the Sustainable Agriculture Project

gvsu.edu/sustainability (616) 331-7366



University Counseling Center

Professional counseling services provided in a confidential setting

The University Counseling Center is a team of trained professionals committed to improving the mental health of the GVSU student body through counseling, education, and consultation.

Our Services

- | | |
|-------------------------|----------------------|
| Individual counseling | Substance counseling |
| Group counseling | Community referral |
| Educational programming | Consultation |

gvsu.edu/counsel (616) 331-3266

Women's Center

The Women's Center creates meaningful learning around gender and advocates for gender justice through education, engagement, and empowerment of women students and the greater GVSU community.



The Women's Center provides:

- a safe and relaxing environment where all voices are heard
- outstanding programming
- academic and personal resources and assistance
- service learning, leadership and internship opportunities.

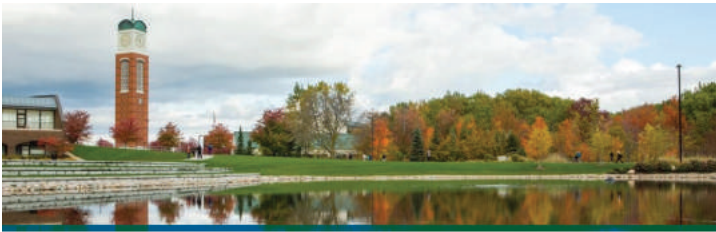


Our well-trained peer consultants can help with:

- brainstorming ideas
- organizing content
- integrating research
- polishing a draft
- correctly documenting sources.

The Fredrick Meijer Center for Writing & Michigan Authors

Any undergraduate or graduate student at Grand Valley can receive free writing feedback from a staff of trained peers simply by coming to the center during drop-in hours or by scheduling an appointment.



Student Ombuds



Takeelia Garrett

The Ombuds strives to promote fairness and foster a positive campus environment by offering students a number of mechanisms for early conflict resolution and problem-solving.

Students may contact the Ombuds at any time during a conflict for assistance. The Ombuds will listen, help them come up with next steps, and discuss other resources that might be helpful.

(616) 331-2491 ombuds@gvsu.edu

THIS IS *GV* COUNTRY

- 20 Varsity Sports
- 20 NCAA Division II National Championships
- 15 Straight years earning first or second in the Directors Cup

GVSUTICKETS.COM
(616) 331-3200

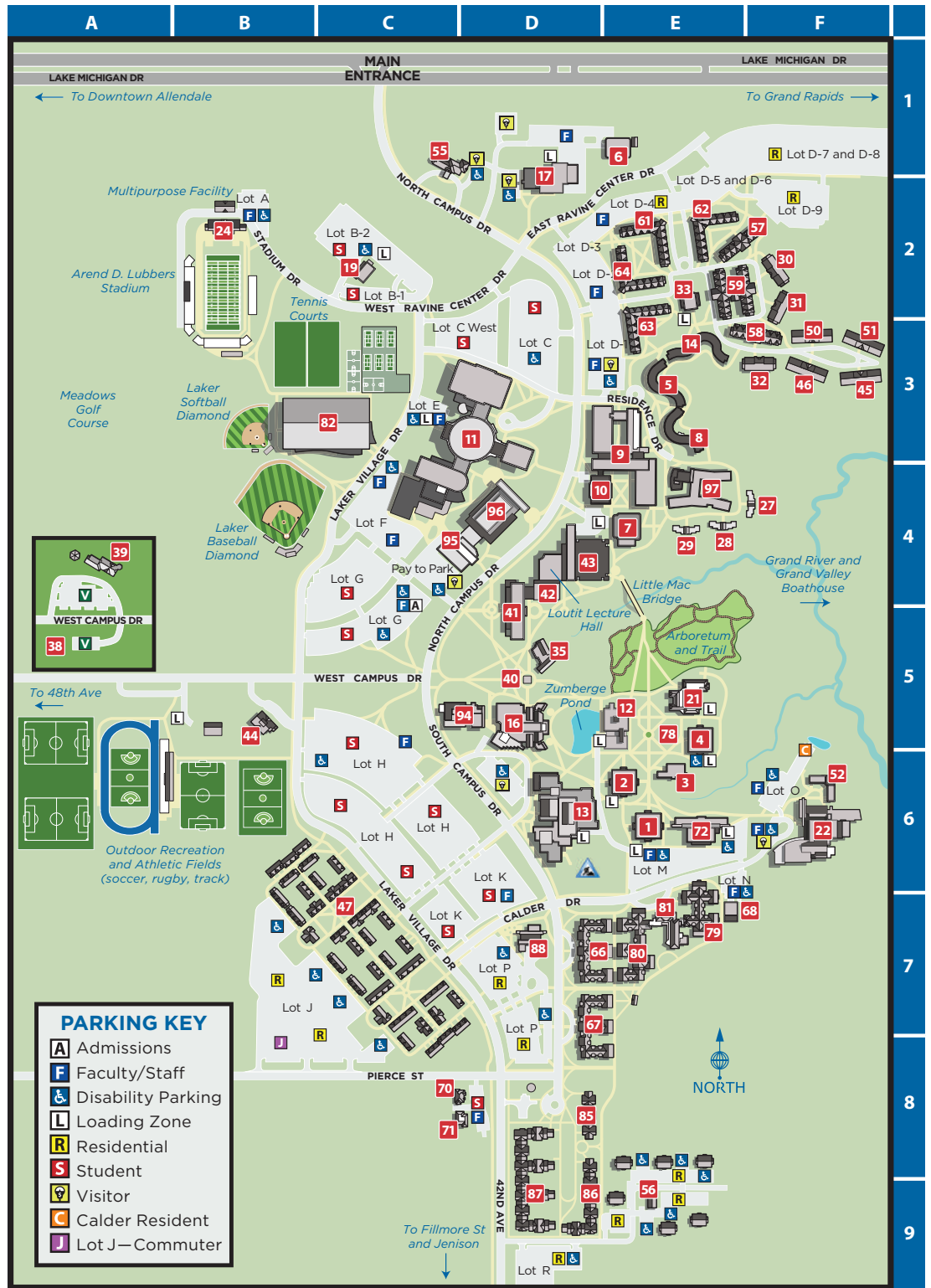
ALLENDALE CAMPUS

1 Campus Drive
Allendale, MI
49401-9403



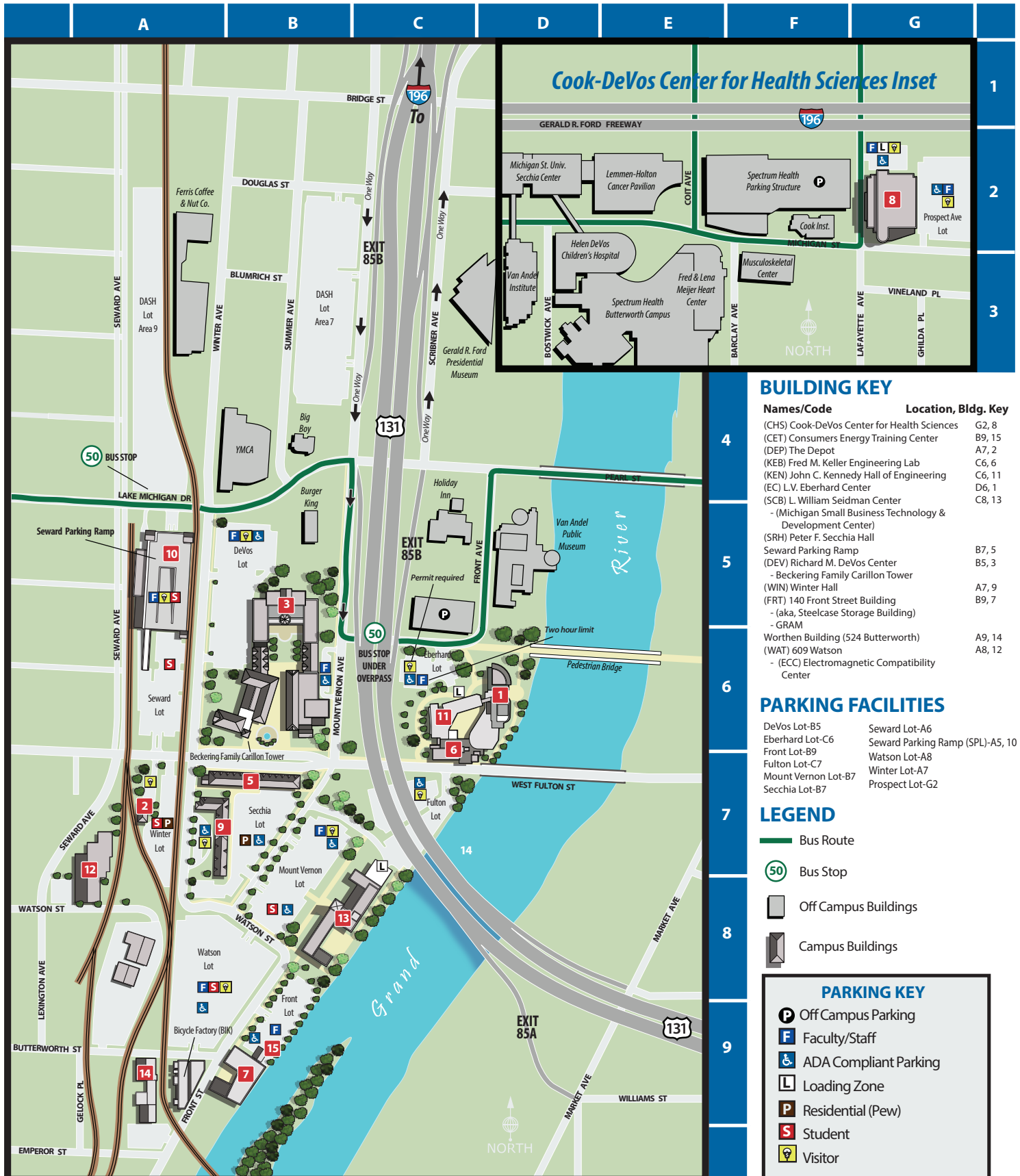
BUILDING KEY

BUILDING NAME	LOCATION*
(AH) Alumni House & Visitor Center.....	55 C1
(ASH) Au Sable Hall.....	21 E5
(CAC) Alexander Calder Fine Arts Center.....	22 F6
(CR) Alexander Calder Residence.....	52 F6
(AGS) Art Gallery Support Building.....	71 C8
(UHC) Campus Health Center.....	70 C8
(CUB) Central Utilities Building.....	6 E1
(CC) Children's Enrichment Center.....	44 B5
(COM) The Commons.....	7 E4
(CON) The Connection.....	88 D7
(CCT) Cook Carillon Tower.....	40 D5
(CDC) Cook-DeWitt Center.....	35 D5
(COP) James M. Copeland Living Center.....	5 E3
(DLC) Richard M. DeVos Living Center.....	30 F2
(SER) Facilities and Services.....	17 D1
(FH) Fieldhouse.....	11 D3
Arena	
Pool	
(RC) Recreation Center	
(FC) Football Center.....	24 B2
(FLC) Edward J. Frey Living Center.....	57 E2
(GVA) Grand Valley Apartments.....	56 E9
Great Lakes Plaza.....	78 E5
(HRY) Henry Hall.....	42 D4
(HLL) Arthur C. Hills Living Center.....	58 F3
(HLLC) Holton-Hooker Learning & Living Center.....	97 E4
(HLC) Icie Macy Hoobler Living Center.....	62 E2
(JLC) Paul A. Johnson Living Center.....	63 E3
(KTR) Kelly Family Sports Center.....	82 C3
(KC) Russel H. Kirkhof Center.....	16 D5
(KRP) William A. Kirkpatrick Living Center.....	50 F3
(KLC) Robert Kleiner Commons.....	33 E2
(KIS) Grace Olsen Kistler Living Center.....	14 E3
(KHS) P. Douglas Kindschi Hall of Science.....	96 D4
(WLC) Ella Koeze-Weed Living Center.....	61 E2
(LHH) Lake Huron Hall.....	4 E5
(LMH) Lake Michigan Hall.....	1 E6
(LOH) Lake Ontario Hall.....	72 E6
(LSH) Lake Superior Hall.....	2 E6
(LVA) Laker Village Apartments.....	47 C7
(MAK) Mackinac Hall.....	9 D3
(MPLC) Maple Living Center.....	27 F4
(MAN) Manitou Hall.....	10 D4
(LMP) The Marketplace.....	95 C4
(LIB) Mary Idema Pew Library Learning and Information Commons.....	94 C5
(MCH) Meadows Club House.....	39 A4
(MLC) Meadows Learning Center.....	38 A4
(MUR) Mark A. Murray Living Center.....	66 E7
(NMR) Glenn A. Niemeyer East Living Center.....	79 E7
(HON) Glenn A. Niemeyer Honors Hall.....	81 E7
(NMR) Glenn A. Niemeyer West Living Center.....	80 E7
(NLC) North C Living Center.....	59 E2
(OLC) Oak Living Center.....	28 E4
(OCC) Arnold C. Ott Living Center.....	64 E2
(RC) Ravine Center.....	19 C2
(PAD) Seymour & Esther Padnos Hall of Science.....	43 D4
(PAC) Performing Arts Center & (LAT) Louis Armstrong Theatre.....	13 D6
(PNLC) Pine Living Center.....	29 E4
(PLC) Robert C. Pew Living Center.....	31 F2
(PKC) William F. Pickard Living Center.....	32 F3
(SER) Department of Public Safety.....	17 D1
(ROB) Kenneth W. Robinson Living Center.....	8 E3
(SH) Seidman House/Lemmen Library.....	3 E6
(SLC) Bill & Sally Seidman Living Center.....	46 F3
(SAC) South Apartments C.....	85 D8
(SAD) South Apartments D.....	86 D8
(SAE) South Apartments E.....	87 D8
(SUB) South Utilities Building.....	68 F7
(STA) Dale Stafford Living Center.....	51 F3
(STU) Student Services Building.....	41 D5
(SWN) Maxine M. Swanson Living Center.....	45 F3
(VLC) Ronald F. VanSteeland Living Center.....	67 D7
(JHZ) James H. Zumberge Hall.....	12 E5



*The first "Location" number represents the number on the map. The second letter/number combination are grid coordinates.

2/14/17



ADVISING CENTERS

Student Academic Success Center

200 STU, 616-331-3588
sasc@gvsu.edu

Pre-major (undecided) & Changing major
200 STU, 616-331-3588
premajor@gvsu.edu

TRIO Student Support Services
200 STU, 616-331-3401
frontesp@gvsu.edu

Laker Academic Center (Student-Athletes)
165 FH, 616-331-3328
arnoldda@gvsu.edu

McNair Scholars Program
200 STU, 616-331-3441
mcnair@gvsu.edu

CLAS (College of Liberal Arts & Sciences)

C-1-140 MAK, 616-331-8585
advstu@gvsu.edu

Advertising & Public Relations	French
Anthropology	Geography and Planning
Art - Studio Art	Geology
Art Education	Geology/Chemistry
Art History	German
Athletic Training	Health Communication
Behavioral	History
Neurosciences	Integrated Science
Biochemistry	International Relations
Biology	Mathematics
Biomedical Sciences	Multimedia
Cell & Molecular Biology	Journalism
Chemistry	Music & Dance
Classic-Greek/Latin	Natural Resource Management
Communication Studies	Philosophy
Comprehensive Science/Arts for teaching – Special Education	Photography
Comprehensive Science/Arts for teaching – Elem Spanish	Physical Education- Prof. Instruction or Sport Leadership
Earth Science	Physics
English	Political Science
Exercise Science	Psychology
Film & Video	Social Studies
	Sociology
	Spanish
	Statistics
	Theater
	Writing

College of Community & Public Service

321C DEV, 616-331-6890
ccpsadvisor@gvsu.edu

Criminal Justice
Hospitality & Tourism Management
Legal Studies
Public & Nonprofit Administration
Social Work

College of Education

401C DEV, 616-331-6650
coeserve@gvsu.edu

Elementary Education
Secondary Education
Special Education
Graduate Education Programs

Seymour & Esther Padnos College of Engineering and Computing

315 KEN & C-2-108 MAK,
616-331-6025
pcecadvising@gvsu.edu

Computer Engineering
Computer Science
Electrical Engineering
Information Systems
Interdisciplinary Engineering
Mechanical Engineering
Occupational Safety & Health Management
Product Design & Manufacturing Engineering

College of Health Professions

113 CHS, 616-331-6890
chpss@gvsu.edu

Allied Health Sciences
Clinical Dietetics
Diagnostical Medical Sonography
Health Information Management
Health Professional Degree Completion
Histotechnology
Medical Dosimetry
Medical Laboratory Science
Occupational Therapy
Physical Therapy
Physician Therapy
Physician Assistant Studies
Public Health
Radiation Therapy
Respiratory Care
Speech Language Pathology
Therapeutic Recreation

Kirkhof College of Nursing

326 CHS, 616-331-7160
kcon@gvsu.edu

BSN- Nursing & Pre-nursing
RN to BSN and 2nd degree BSN

Brooks College of Interdisciplinary Studies

133 LMH, 616-331-8200
brooksadvising@gvsu.edu

Chinese Studies
Global Studies & Social Impact
Liberal Studies
Religious Studies
Women, Gender, and Sexuality Studies

Seidman College of Business

1041 SCB, 616-331-7500
go2gvbiz@gvsu.edu

Accounting
Business Economics– General
Business Economics– Real Estate
Economics (BA/BS)
Entrepreneurship
Finance
General Business
General Management
Human Resource Management
International Business
Management-Information Systems
Marketing
Marketing– Distribution & Logistics
Marketing– Sales
Operations Management
Supply Chain Management

NOTES

[illegible]



Grand Valley Fight Song

We want a Grand Valley victory,
as the Lakers we have pride.

Our team will lead us on, Blue
and White we're at your side!

We want a Grand Valley victory,
as our foes will quickly see.

Raise! Your! Voices and cheer
for a VIC-TO-RY

FIGHT! FIGHT! FIGHT!

Alma Mater

Hail to thee Grand Valley

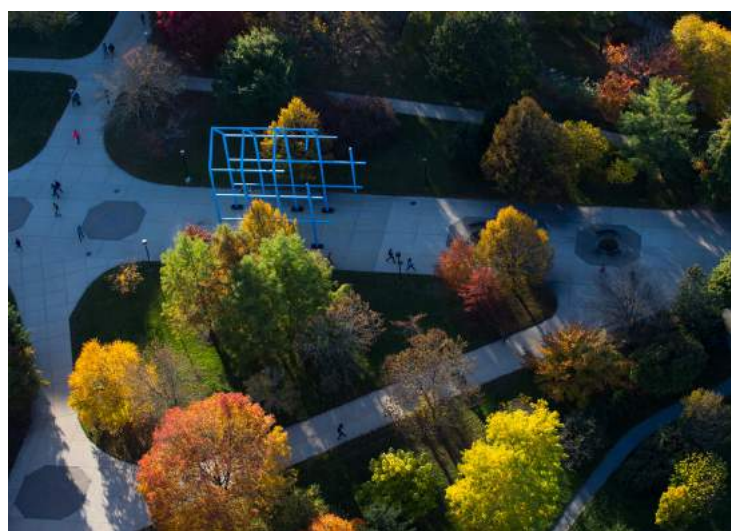
We're loyal, steadfast, true.

Praise our Alma Mater

We pledge our faith to you.

Keep your banners flying, black,
and white and blue.

We sing to thee Grand Valley,
united we're for you!



Grand Valley State University is an affirmative action, equal opportunity institution. It encourages diversity and provides equal opportunity in education, employment, all of its programs, and the use of its facilities. It is committed to protecting the constitutional and statutory civil rights of persons connected with the university. 5/17
© 2017 Grand Valley State University

