

# INTERNSHIP PRESENTATION Fall 2019

## GLHC *creating care connected communities*

- Leading Health Information Exchange (HIE) in Michigan.
- Providing the best portfolio of health information exchange solutions by offering the best products and technological services.
- Offers solutions through highly advanced platforms to help better serve the patients, community and healthcare consumers.

## GLHC Solutions

- **Results Delivery**
- **Patient Care Document**
- **Direct Address/Direct HISP**
- **ADT Notifications**
- **VIPR**
- **Referral application**
- State Registries
- Consulting & Training
- Programs & Initiatives



***Gained Experience, Learned Professionalism and Developed Community Service***

## Teams

### Program and Technical Operations

- System
- Business integration analyst
- **Health integration analyst**

### Technology Services and Support

- Business Development**
- Finance and Administration**
- Making Choices Michigan**

## Health Integration Analyst Intern

Project: **GRID Migration for Results Delivery** (from Medicity-iNexx platform to Ensemble-Health Connect platform)

Internship period: January 2019 - Present

- Building and validating interfaces and routes between various hospitals, physician offices and EMRs to exchange clinical data.
- Development of DTL (Data Transformation Language) to meet provider's EMR specifications.
- Creating ad-hoc reports on daily basis for office requirements and resolving issues for client results delivery.
- Communicating with various EMR and healthcare entity resources to diagnose and resolve systems issues; establish interface configurations.
- Handle assigned CRM (Salesforce) cases.

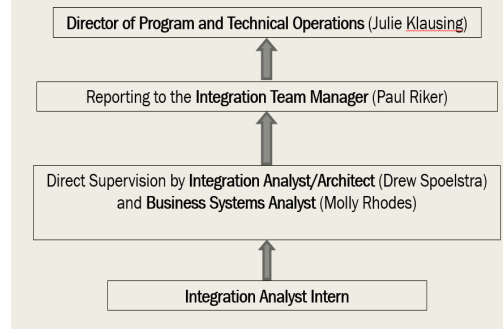


**KRITIKA SIJAPATI**  
Integration Analyst Intern

## A day in the life of an Integration Analyst Intern at GLHC

- Come in and log in
- Check emails, IMs, assigned cases, etc.
- Run assigned daily reports
- Daily Status Meeting- message from Integration Daily Stand-up meeting
- Follow up on issues from the daily reports
- Regular assigned tasks with the GRID Migration project
- Break at 12 noon.
- Change Control meetings at 1:30 pm (Mondays and Wednesdays)
- Monitor assigned interface migration tasks
- Other assigned tasks and cases
- Leave at 4:30 pm

## Reporting and supervision



## Skillset and academic reflection

- Intersystems Ensemble-Health Connect
- Relational DB management using SQL (MS Access)
- Health Level 7 (HL7) messaging standard and structure/schema. ADT messaging, etc.
- HL7 Spy, Notepad++, Interface Explorer for HL7 Professional, etc.
- Customer-relationship management (Salesforce) tool
- Office 365 for task/business management, etc.

## Health Informatics Relevance

- Technologies used to maintain healthcare and health information exchange
- Coding and data transformation, data analysis
- Understanding of healthcare messaging between and within hospital systems
- Knowledge of electronic health record platforms