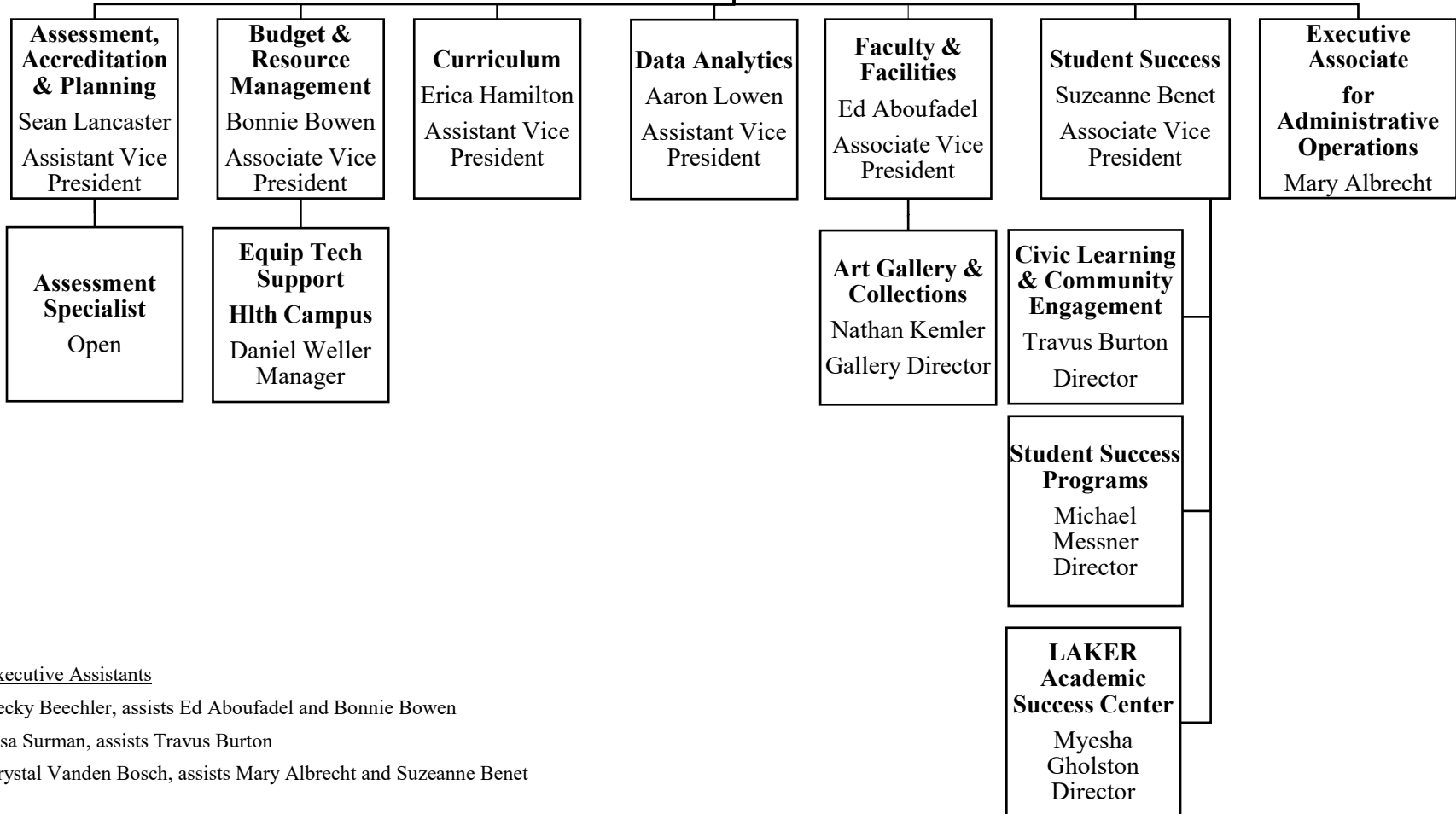


Office of the Provost

**Provost and Executive Vice President
for Academic Affairs**
Fatma Mili

**Executive
Assistant**
Becki Visser



Executive Assistants

Becky Beechler, assists Ed Aboufadel and Bonnie Bowen

Lisa Surman, assists Travus Burton

Krystal Vanden Bosch, assists Mary Albrecht and Suzeanne Benet