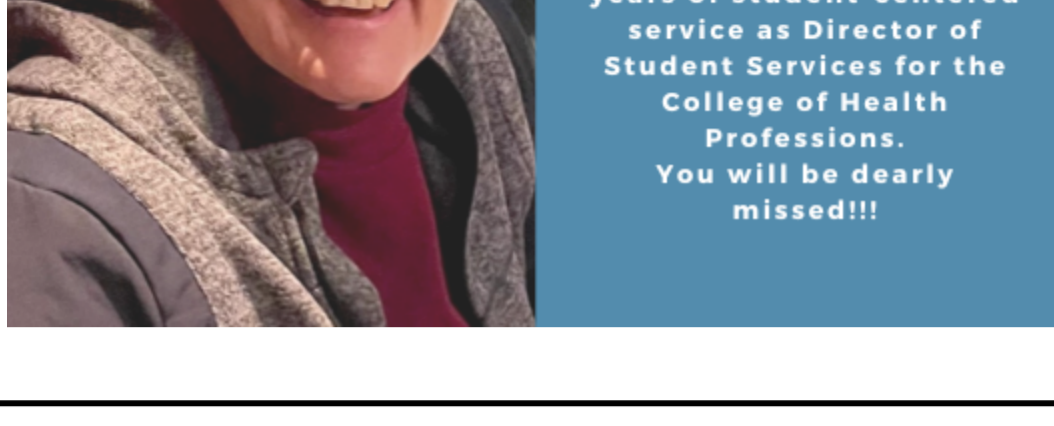
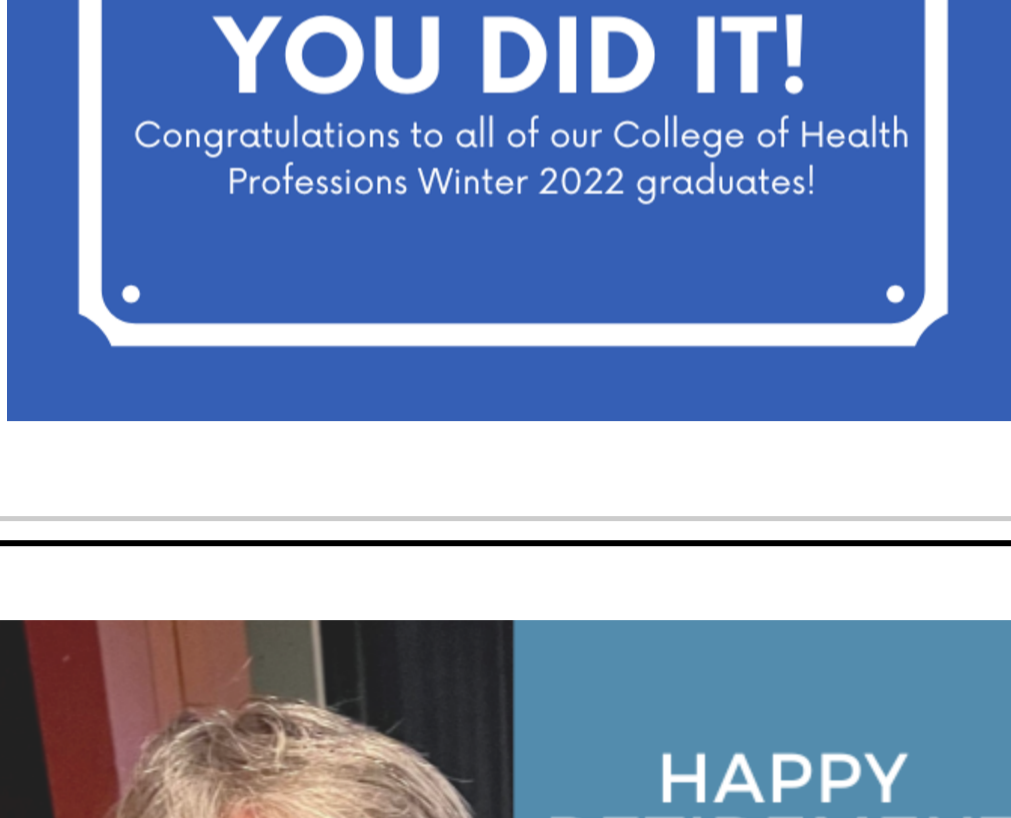


College of Health Professions Student Services

www.gvsu.edu/chpps

CHP SS eNews

May 2022



THANK YOU for your 16 years of student-centered service as Director of Student Services for the College of Health Professions. You will be dearly missed!!!

Our advisors are here for you all SUMMER!
Please REGISTER for BOTH fall and winter classes now!

[Schedule HERE](#)

Or call us at 616-331-5900

If you are unable to attend your scheduled appointment, please call us to cancel or reschedule so that others can access your appointment slot.

- May 9 - Spring/Summer Classes Begin
- May 13 by 5 pm- Last Day to Add or Register
- May 30 - Memorial Day Recess

CHP Applications - there is still time to apply! Deadlines have been extended!

- [Applied Food and Nutrition](#) - still OPEN to start program Fall 2022
- [Communication Sciences and Disorders](#) - still OPEN to start program Fall 2022
- [Health Information Management](#) - still OPEN to start program Fall 2022
- [Histotechnology](#) - Priority Deadline - April 1
- [Medical Laboratory Science](#) - still OPEN to start program Winter 2023
- [Occupational Therapy \(DrOT\)](#) - still OPEN to start program Fall 2022
- [Public Health](#) - still OPEN to start program Fall 2022
- [Recreation Therapy \(BS\)](#) - still OPEN to start program Fall 2022
- [Respiratory Care](#) - still OPEN to start program Fall 2022
- [Speech Language Pathology \(Track 2\)](#) - still OPEN to start program Fall 2022

Not sure if you are eligible or ready to apply?? We can help!
[Appointments](#) or call 616-331-5900.

CHP has More to Offer You

NEW Combined Degrees: Your pathway to Graduate degrees

- [Allied Health Sciences and Public Health](#) (info below)
- [Applied Food & Nutrition and Clinical Dietetics](#)
- [Exercise Science and Public Health](#) (info below)
- [Exercise Science and Athletic Training](#)
- [Occupational Therapy MS and DrOT](#)
- [Recreational Therapy Combined BS to MS](#)

Healthcare Work and Volunteer Opportunities - Some NEW!

**CHPSS
helps you
connect!**

UPDATED RESOURCES:
Healthcare job shadowing,
clinical observations,
certifications, training, paid
and volunteer
opportunities!!!

**Childcare
Opportunity**

**GV student wanted for
part-time childcare!** Email
for details.

**Assisted
Living
Caregivers**

**Georgetown and Cambridge
Assisted Living!** Valuable
healthcare experience.

**Helix
Scribe
Solutions**

Paid scribe positions! Eligible
candidates will receive free
training through the GVSU
Scribe Academy.

**Papa
Pals**

Earn \$\$ while doing good! Help
older adults and families with
basic tasks. Flexible hours.

**Mary Free
Bed
Volunteer
Program**

**College Student Volunteer
Program!** Enrolling for winter
session January - April 2022!

**Summer
Health
Professions
Education
Program**

**Free summer enrichment
program!** Focused on improving
access to information and
resources for college students.

**IKUS Life
Enrichment
Services**

**Making Every Day Another "Best
Day"!!** Help individuals with
disabilities discover their potential,
experience greater freedom, learn
new skills, and have fun.
Feb 5, 2022 application deadline.

**Olivia's
Gift**

Make a difference! Offer your
talents for this nonprofit residential
livings for adults with severe
disabilities. Especially for Therapy
students!

**Community
Service
Learning
Center**

**Monthly Days of Community Action
are back!** Trained site leaders,
community engagement with local
nonprofits.

**Healthcare
Experience
Panel**

View [RECORDED PANEL](#).
Students will learn how to gain
healthcare experience during COVID-
19.

Check out Health Professions Fellowships!

[Health Professions Fellowships](#)

[International Service & Volunteer Opportunities](#)

[Survey the many opportunities HERE at the Office of Fellowships!](#)

PUBLIC HEALTH INFO SESSIONS

Join the Director of the MPH program, Dr. Ranelle Brew to learn how and why you should earn your Master of Public Health.

Monday, May 9 from 12 - 1 PM

[Please RSVP and see all the INFO HERE!](#)

For more information, please visit the [program's site](#).

**COMBINED
DEGREE:
ALLIED HEALTH
SCIENCES B.S.
&
PUBLIC HEALTH
M.P.H.**



LEARN MORE AT
[HTTPS://WWW.GVSU.EDU/COMBINEDDEGREES](https://www.gvsu.edu/combineddegrees)



Undergraduates in Allied Health Sciences B.S. with junior-level standing and a GPA of 3.0 may apply.

Why?
It saves students both time and money by obtaining a combined degree.

Choice of format: hybrid or in-seat.

Choice of emphasis: health promotion or epidemiology.

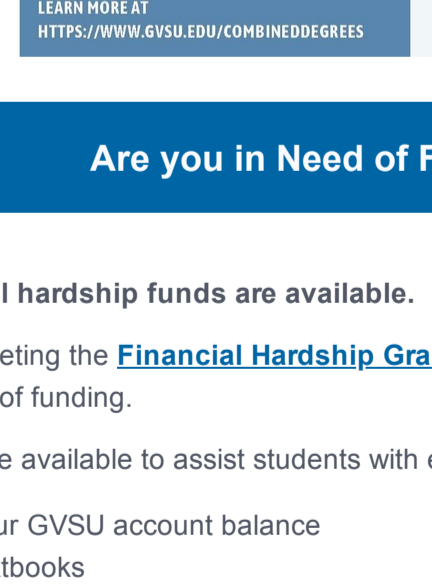
Students take MPH courses senior year, in lieu of an undergraduate minor. Coursework includes:

- PH 500 - Introduction to Public Health
- PH 505 - Social and Behavioral Public Health
- PH 510 - Public Health Epidemiology
- PH 530 - Qualitative Research Methods in Public Health
- PH 602 - Chronic Disease Epidemiology OR PH 622 - Health Behavior and Promotion
- STA 610 - Applied Statistics for Health Professions

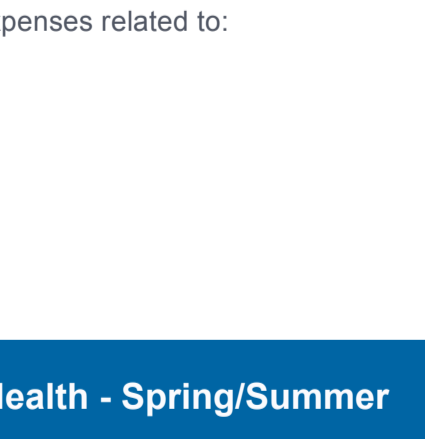
Graduates can be found in the fields of global and environmental health, health management and education, epidemiology, research, government agencies, advocacy, and public policy.

COLLEGE OF HEALTH PROFESSIONS
MASTER OF PUBLIC HEALTH
[HTTPS://WWW.GVSU.EDU/GRAD/MPMH](https://www.gvsu.edu/grad/mpmh)

**COMBINED
DEGREE:
EXERCISE
SCIENCE B.S.
&
PUBLIC HEALTH
M.P.H.**



LEARN MORE AT
[HTTPS://WWW.GVSU.EDU/COMBINEDDEGREES](https://www.gvsu.edu/combineddegrees)



Undergraduates in Exercise Science B.S. with Junior-level standing and a GPA of 3.0 may apply.

Why?
It saves students both time and money by obtaining a combined degree.

Choice of format: hybrid or in-seat.

Choice of emphasis: health promotion or epidemiology.

Students take MPH courses senior year, in lieu of an undergraduate minor. Coursework includes:

- PH 500 - Introduction to Public Health
- PH 505 - Social and Behavioral Public Health
- PH 510 - Public Health Epidemiology
- PH 530 - Qualitative Research Methods in Public Health
- PH 602 - Chronic Disease Epidemiology OR PH 622 - Health Behavior and Promotion
- STA 610 - Applied Statistics for Health Professions

Graduates can be found in the fields of global and environmental health, health management and education, epidemiology, research, government agencies, advocacy, and public policy.

COLLEGE OF HEALTH PROFESSIONS
MASTER OF PUBLIC HEALTH
[HTTPS://WWW.GVSU.EDU/GRAD/MPMH](https://www.gvsu.edu/grad/mpmh)

Are you in Need of Financial Assistance?

Financial hardship funds are available.

By completing the [Financial Hardship Grant Request](#) form, you will be considered for a variety of funding.

Funds are available to assist students with expenses related to:

- your GVSU account balance
- textbooks
- food and housing
- internet and technology
- healthcare and childcare

PH222 - Intro to Public Health - Spring/Summer

PH 222- INTRODUCTION TO PUBLIC HEALTH

Introduction to the history, philosophy, current concepts, practice, and administration of public health in the United States.

Offered fall, winter, and spring/summer semester. **3 credits.**

Learn about factors that impact community health, program implementation, research, disease surveillance, and much more.

For more information, contact: [Dr. Ranelle Brew](#)

Global Perspectives on Education - Spring 2022

EDF 316 Global Perspectives on Education

Engaging exploration of schooling in other countries, successful characteristics and the impact of their countries and cultures.

Entirely online, synchronous (Tues 5-6:30 PM).

Meets TWO general education requirements!

CHP Undergraduate Programs: Allied Health Sciences, Applied Food and Nutrition, Cardiovascular Sonography, Communications Sciences and Disorders, Diagnostic Medical Sonography, Health Information Management, Health Professional Degree Completion, Histotechnology, Medical Laboratory Sciences, Pre-Physical Therapy, Pre-Physician Assistant Studies, Radiation Therapy, Recreational Therapy and Respiratory Care.

CHP Undergraduate and Graduate Combined Degree Programs: Allied Health Sciences and Public Health, Applied Food & Nutrition and Clinical Dietetics, Exercise Science and Athletic Training, Occupational Therapy Combined M.S. & Dr. O.T., Recreational Therapy Combined B.S. & M.S.

CHP Graduate Programs: Athletic Training, Audiology, Clinical Dietetics, Medical Dosimetry, Occupational Therapy, Physician Assistant Studies, Physical Therapy, Public Health, and Speech Language Pathology.

301 Michigan Street NE
Student Services Office - Suite 113
Grand Rapids, MI 49503

Share this: [Twitter](#) [Facebook](#) [LinkedIn](#)

[Unsubscribe](#) from future emails.

[Subscribe](#) to our email list.