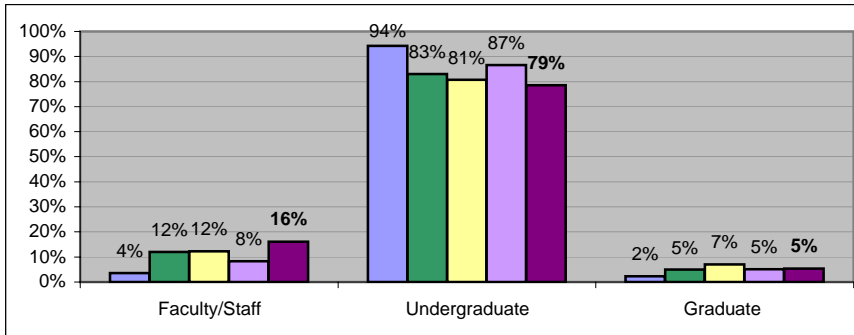


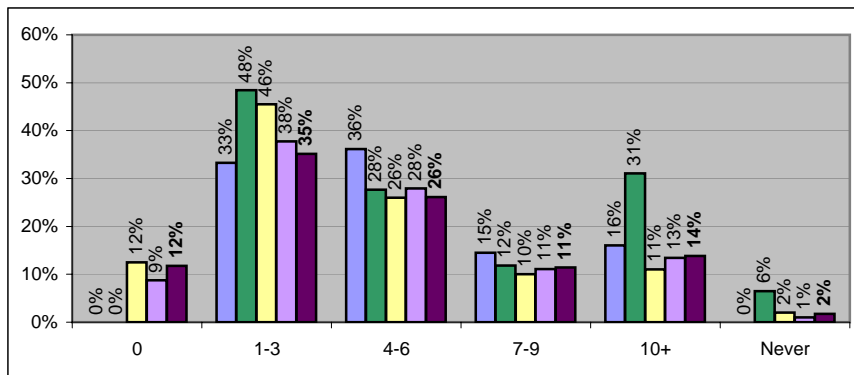
Bus Ridership Survey Results Winter Semester Comparisons

1. What is your current status?



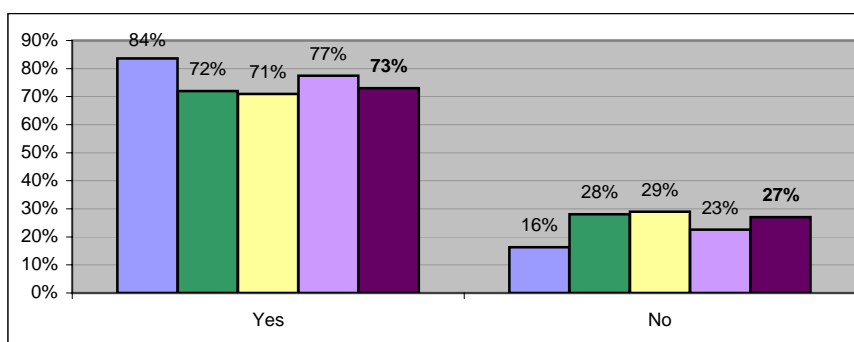
Status	2005	2006	2007	2008	2009
Faculty/Staff	4%	12%	12%	8%	16%
Undergraduate	94%	83%	81%	87%	79%
Graduate	2%	5%	7%	5%	5%
TOTAL					

2. How many round trips per week do you ride?



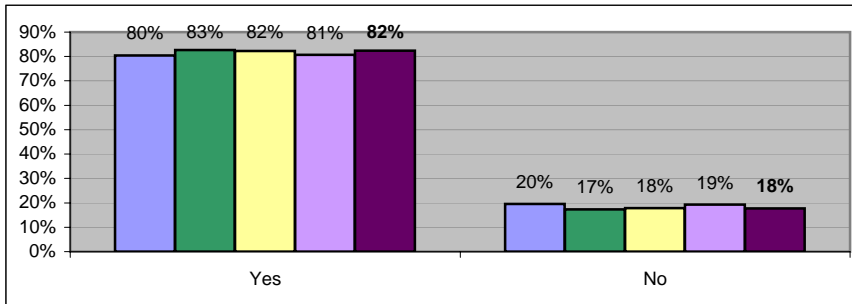
	2005	2006	2007	2008	2009
0	0%	0%	12%	9%	12%
1-3	33%	48%	46%	38%	35%
4-6	36%	28%	26%	28%	26%
7-9	15%	12%	10%	11%	11%
10+	16%	31%	11%	13%	14%
Never	0%	6%	2%	1%	2%
TOTAL					

3. Is the GVSU shuttle your main source of transportation between the two



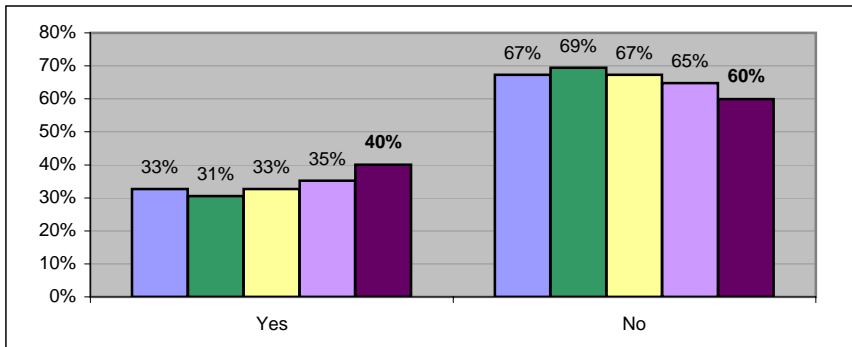
	2005	2006	2007	2008	2009
Yes	84%	72%	71%	77%	73%
No	16%	28%	29%	23%	27%
TOTAL					

4. Do you have a vehicle?



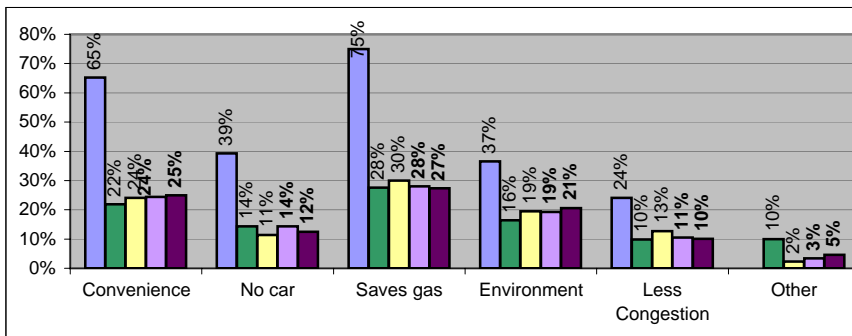
	2005	2006	2007	2008	2009
Yes	80%	83%	82%	81%	82%
No	20%	17%	18%	19%	18%
TOTAL					

5. Have you ever ridden a Rapid bus other than those on the GVSU routes?



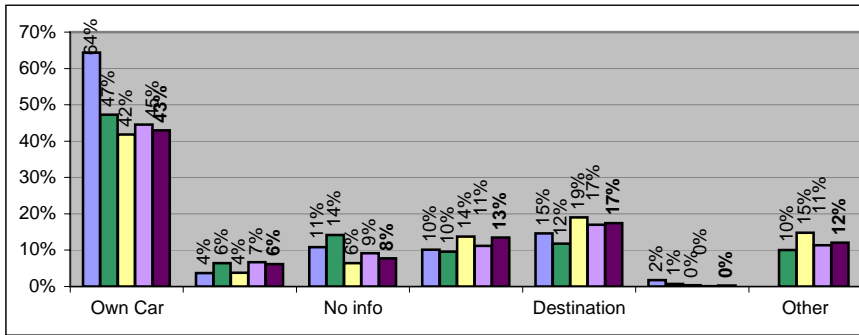
	2005	2006	2007	2008	2009
Yes	33%	31%	33%	35%	40%
No	67%	69%	67%	65%	60%
TOTAL					

6. If yes, for what reason did you ride the Rapid bus?



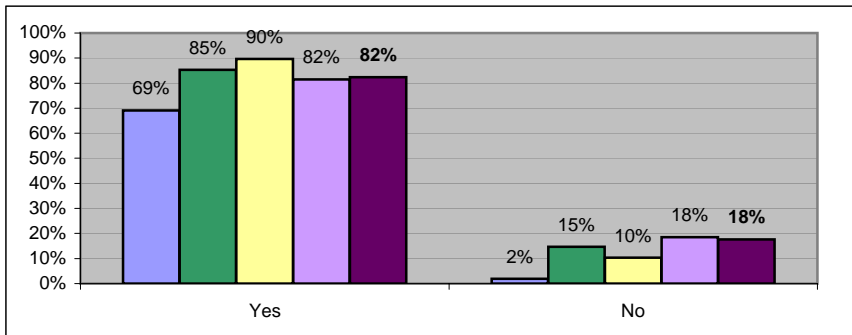
	2005	2006	2007	2008	2009
Convenience	65%	22%	24%	24%	25%
No car	39%	14%	11%	14%	12%
Saves gas	75%	28%	30%	28%	27%
Environment	37%	16%	19%	19%	21%
Less Congestion	24%	10%	13%	11%	10%
Other	10%	2%	3%	3%	5%
TOTAL					

7. If no, why have you not ridden the Rapid bus?



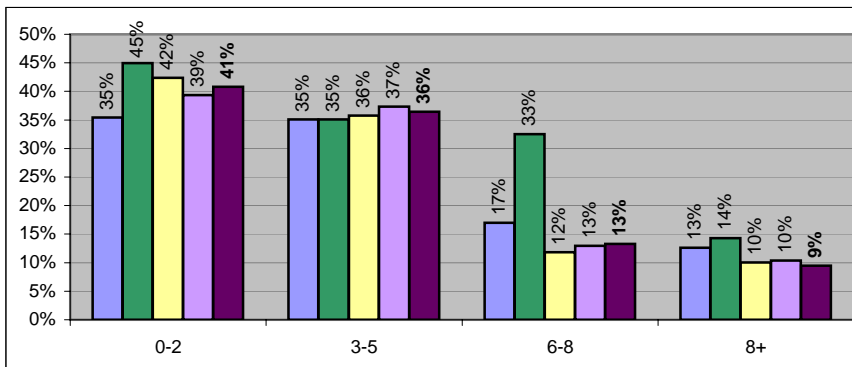
	2005	2006	2007	2008	2009
Own Car	64%	47%	42%	45%	43%
Scared	4%	6%	4%	7%	6%
No info	11%	14%	6%	9%	8%
Inconvenient	10%	10%	14%	11%	13%
Destination	15%	12%	19%	17%	17%
Too Expensive	2%	1%	0%	0%	0%
Other	10%	15%	11%	15%	12%
TOTAL					

8. If there was a stop conveniently located, and the bus was going to your destination, would you choose a Rapid bus?



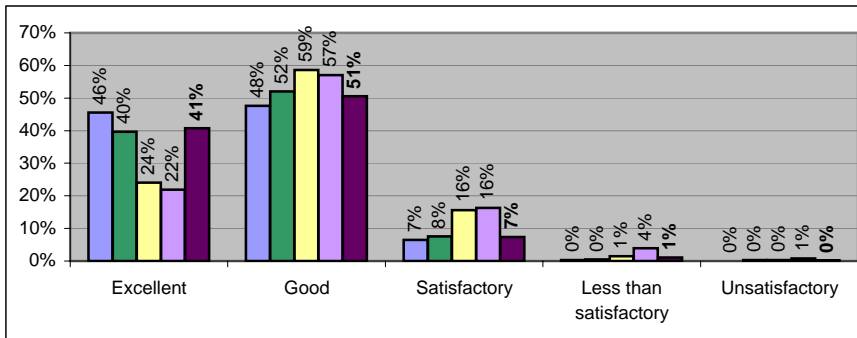
	2005	2006	2007	2008	2009
Yes	69%	85%	90%	82%	82%
No	2%	15%	10%	18%	18%
Maybe	29%	-	-		
TOTAL					

10. How often do you ride the Campus Connector each week?



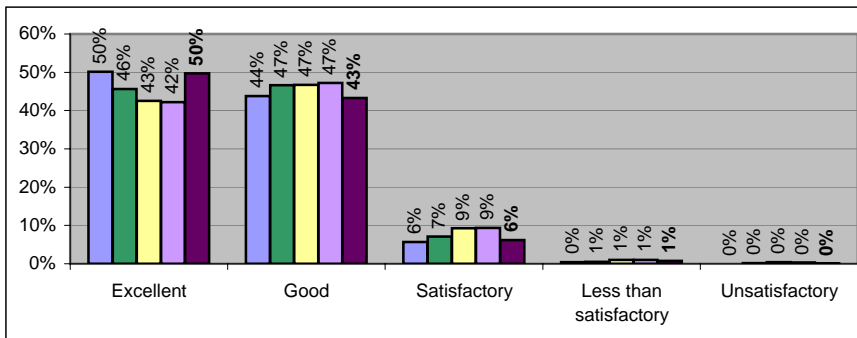
	2005	2006	2007	2008	2009
0-2	35%	45%	42%	39%	41%
3-5	35%	35%	36%	37%	36%
6-8	17%	33%	12%	13%	13%
8+	13%	14%	10%	10%	9%
TOTAL					

11. How do you rate the overall quality of the bus service?



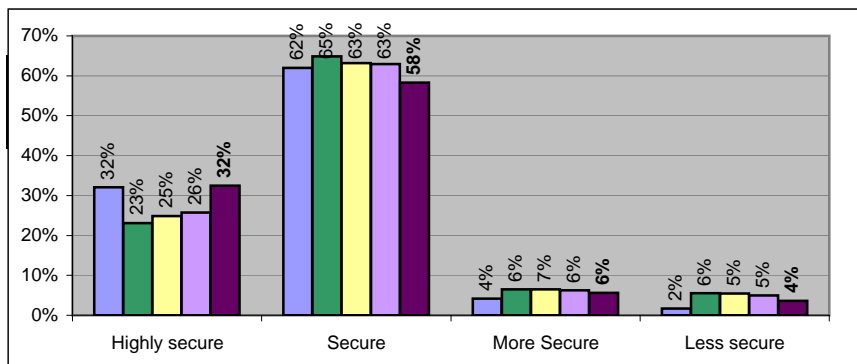
	2005	2006	2007	2008	2009
Excellent	46%	40%	24%	22%	41%
Good	48%	52%	59%	57%	51%
Satisfactory	7%	8%	16%	16%	7%
Less than satisfactory	0%	0%	1%	4%	1%
Unsatisfactory	0%	0%	0%	1%	0%
TOTAL					

12. How do you rate the bus drivers in terms of attitude?

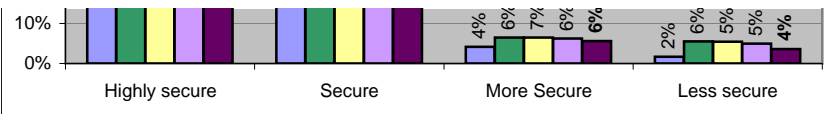


	2005	2006	2007	2008	2009
Excellent	50%	46%	43%	42%	50%
Good	44%	47%	47%	47%	43%
Satisfactory	6%	7%	9%	9%	6%
Less than satisfactory	0%	1%	1%	1%	1%
Unsatisfactory	0%	0%	0%	0%	0%
TOTAL					

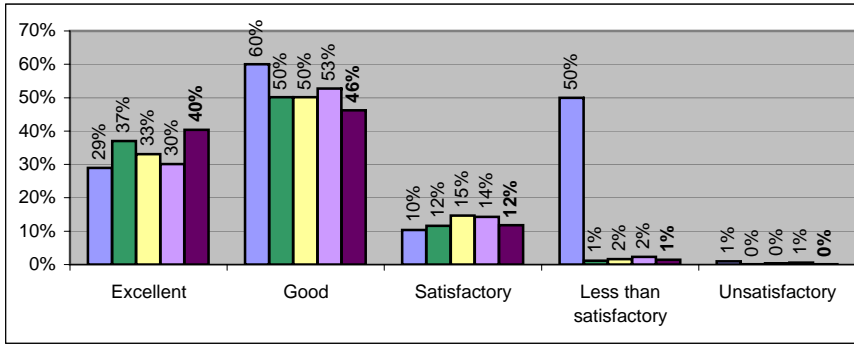
13. How do you perceive the level of security on the GVSU routes - compared to other areas on campus?



	2005	2006	2007	2008	2009
Highly secure	32%	23%	25%	26%	32%
Secure	62%	65%	63%	63%	58%
More Secure	4%	6%	7%	6%	6%
Less secure	2%	6%	5%	5%	4%
TOTAL					

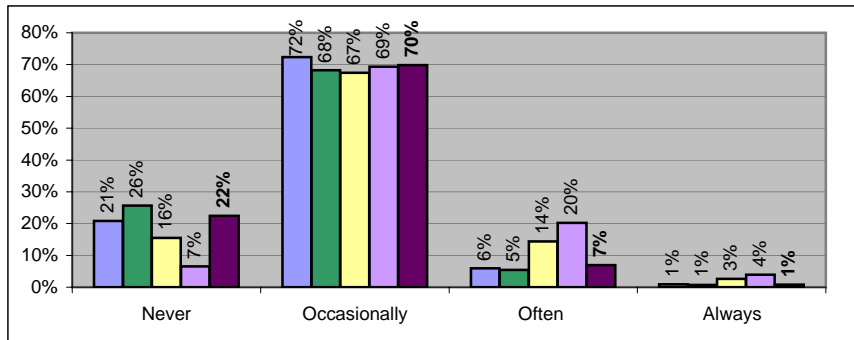


14. How do you rate the bus drivers in terms of driving skill and safety?



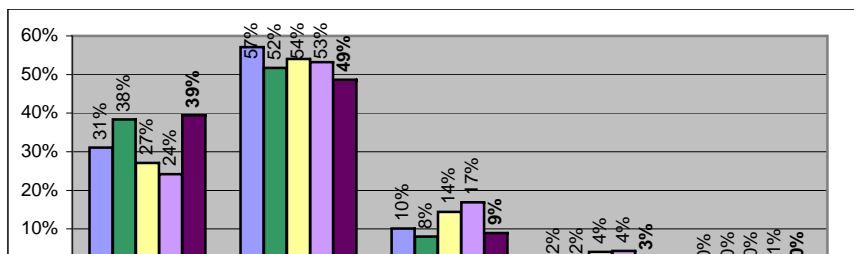
	2005	2006	2007	2008	2009
Excellent	29%	37%	33%	30%	40%
Good	60%	50%	50%	53%	46%
Satisfactory	10%	12%	15%	14%	12%
Less than satisfactory	50%	1%	2%	2%	1%
Un satisfactory	1%	0%	0%	1%	0%
TOTAL					

15. How often are the busses late (arriving more than 5 minutes after the printed schedule time)?

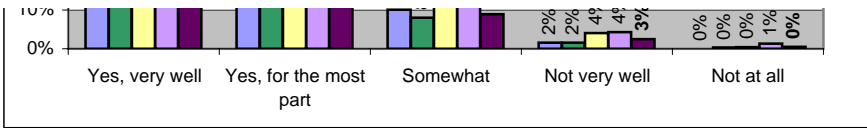


	2005	2006	2007	2008	2009
Never	21%	26%	16%	7%	22%
Occasionally	72%	68%	67%	69%	70%
Often	6%	5%	14%	20%	7%
Always	1%	1%	3%	4%	1%
TOTAL					

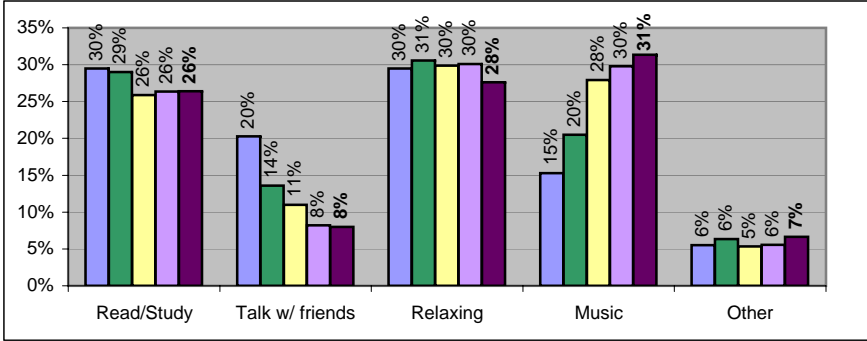
16. Does the current schedule meet your needs?



	2005	2006	2007	2008	2009
Yes, very well	31%	38%	27%	24%	39%
Yes, for the most part	57%	52%	54%	53%	49%
Somewhat	10%	8%	14%	17%	9%
Not very well	2%	2%	4%	4%	3%
Not at all	0%	0%	0%	1%	0%
TOTAL					

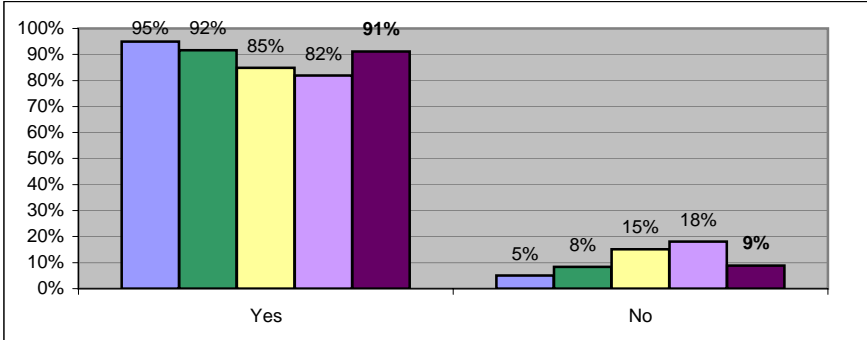


17. How do you spend your time on the GVSU routes?



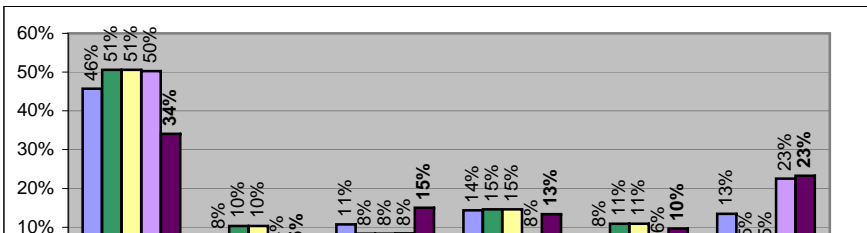
	2005	2006	2007	2008	2009
Read/Study	30%	29%	26%	26%	26%
Talk w/ friends	20%	14%	11%	8%	8%
Relaxing	30%	31%	30%	30%	28%
Music	15%	20%	28%	30%	31%
Other	6%	6%	5%	6%	7%
TOTAL					

18. Do you feel that GVSU is doing it's best to accommodate the students that are in need of the shuttles?

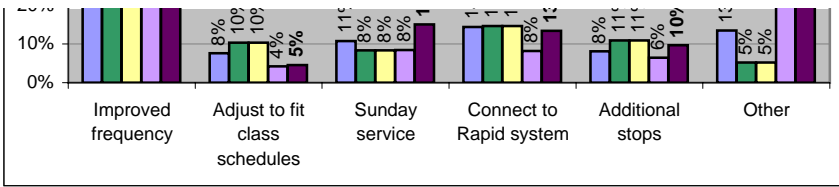


	2005	2006	2007	2008	2009
Yes	95%	92%	85%	82%	91%
No	5%	8%	15%	18%	9%
TOTAL					

19. What one improvement would you most like to see?



	2005	2006	2007	2008	2009
Improved frequency	46%	51%	51%	50%	34%
Adjust to fit class schedules	8%	10%	10%	4%	5%
Sunday service	11%	8%	8%	8%	15%
Connect to Rapid system	14%	15%	15%	8%	13%
Additional stops	8%	11%	11%	6%	10%



Other	13%	5%	5%	23%	23%
TOTAL					

