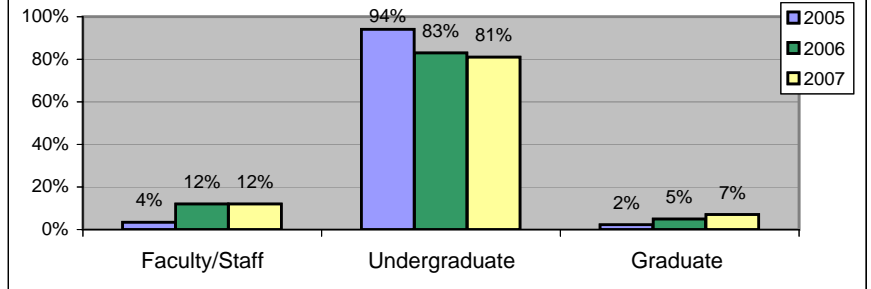


**Bus Ridership Survey Results
Winter Semester Comparisons**

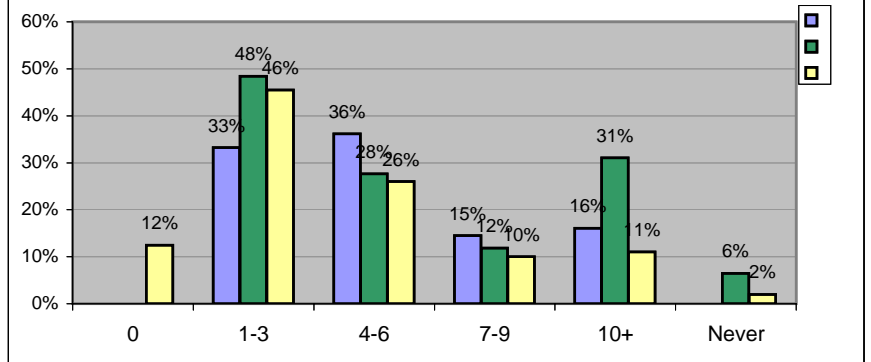
1. What is your current status?

Status	2005		2006		2007	
Faculty/Staff	34	4%	245	12%	234	12%
Undergraduate	911	94%	1698	83%	1549	81%
Graduate	22	2%	103	5%	135	7%
TOTAL	967		2046		1918	



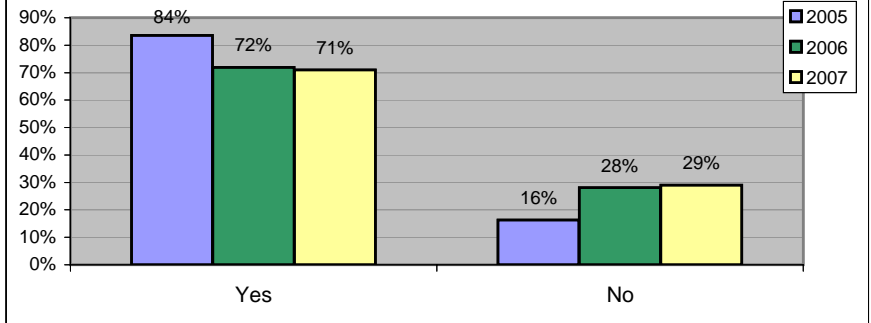
2. How many round trips per week do you ride?

	2005		2006		2007	
0					213	12%
1-3	321	33%	981	48%	776	46%
4-6	349	36%	560	28%	490	26%
7-9	140	15%	174	12%	192	10%
10+	155	16%	178	31%	212	11%
Never			132	6%	35	2%
TOTAL	965		2025		1705	



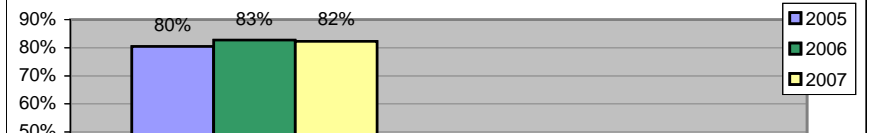
3. Is the GVSU shuttle your main source of transportation between the two campuses?

	2005		2006		2007	
Yes	808	84%	1470	72%	1355	71%
No	158	16%	573	28%	558	29%
TOTAL	966		2043		1913	

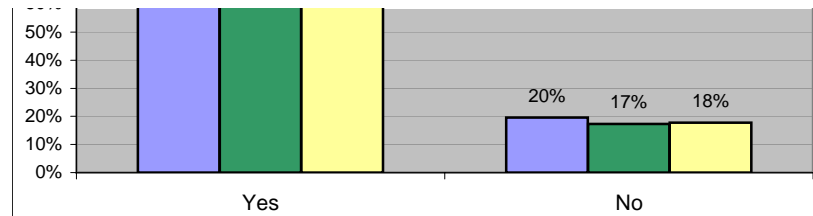


4. Do you have a vehicle?

	2005		2006		2007	
Yes	777	80%	1690	83%	1576	82%

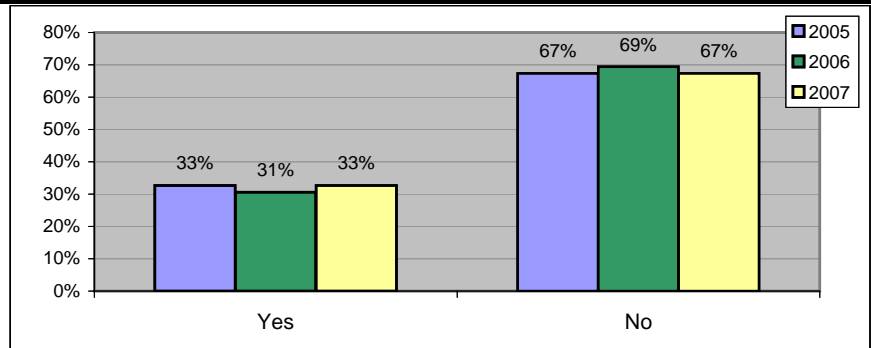


No	189	20%	354	17%	341	18%
TOTAL	966		2044		1917	



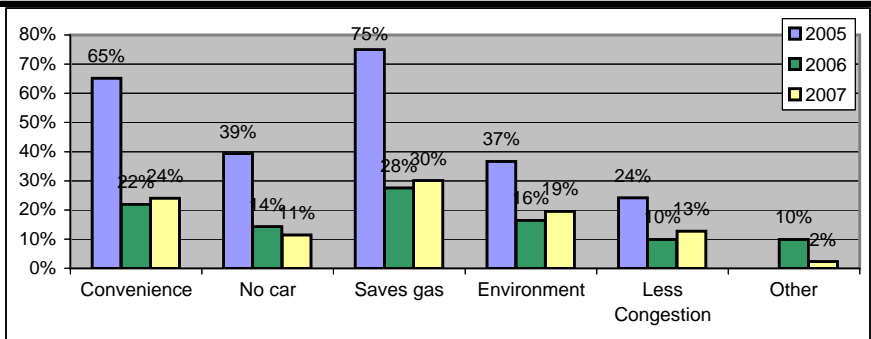
5. Have you ever ridden a Rapid bus other than those on the GVSU routes?

	2005		2006		2007	
Yes	314	33%	616	31%	628	33%
No	647	67%	1398	69%	1292	67%
TOTAL	961		2014		1920	



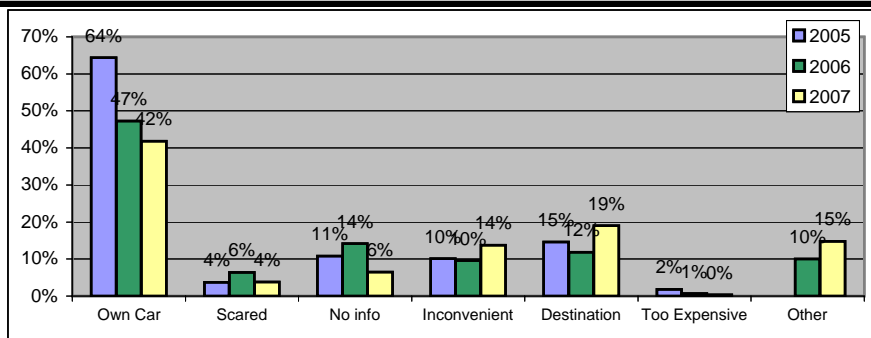
6. If yes, for what reason did you ride the Rapid bus?

	2005		2006		2007	
Convenience	214	65%	334	22%	369	24%
No car	129	39%	218	14%	175	11%
Saves gas	246	75%	420	28%	461	30%
Environment	120	37%	250	16%	299	19%
Less Congestion	79	24%	150	10%	195	13%
Other			151	10%	36	2%
TOTAL	788		1523		1535	



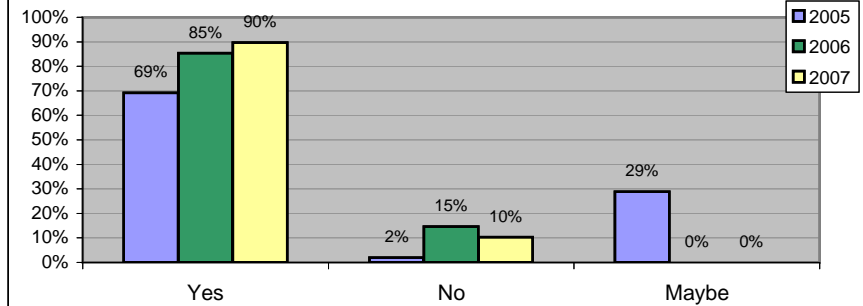
7. If no, why have you not ridden the Rapid bus?

	2005		2006		2007	
Own Car	440	64%	879	47%	763	42%
Scared	25	4%	119	6%	69	4%
No info	74	11%	263	14%	118	6%
Inconvenient	69	10%	178	10%	250	14%
Destination	100	15%	220	12%	347	19%
Too Expensive	12	2%	13	1%	7	0%
Other			186	10%	270	15%
TOTAL	720		1858		1824	



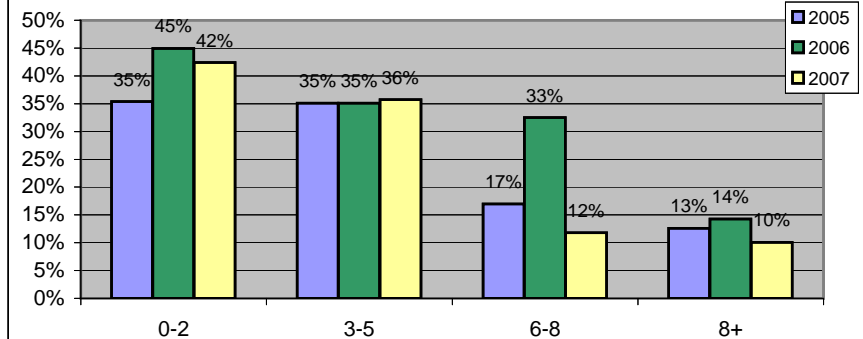
8. If there was a stop conveniently located, and the bus was going to your destination, would you choose a Rapid bus?

	2005		2006		2007	
Yes	665	69%	1685	85%	1697	90%
No	19	2%	289	15%	195	10%
Maybe	278	29%	-	-	-	-
TOTAL	962		1974		1892	



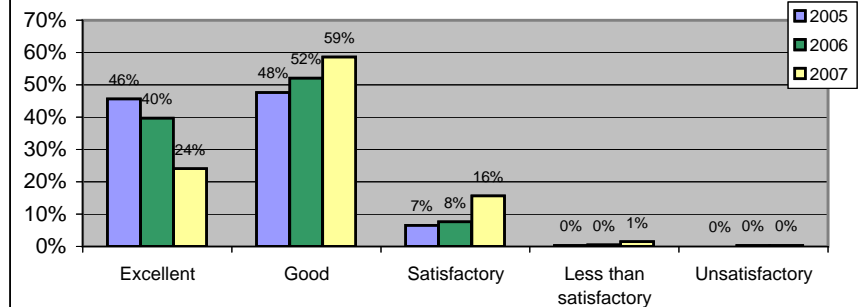
10. How often do you ride the Campus Connector each week?

	2005		2006		2007	
0-2	341	35%	606	45%	510	42%
3-5	338	35%	473	35%	430	36%
6-8	164	17%	169	33%	142	12%
8+	121	13%	100	14%	121	10%
TOTAL	964		1348		1203	



11. How do you rate the overall quality of the bus service?

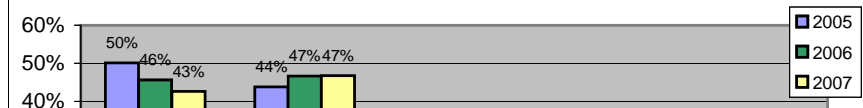
	2005		2006		2007	
Excellent	432	46%	790	40%	449	24%
Good	451	48%	1037	52%	1094	59%
Satisfactory	62	7%	151	8%	291	16%
Less than satisfactory	3	0%	9	0%	27	1%
Unsatisfactory	0	0%	5	0%	5	0%
TOTAL	948		1992		1866	



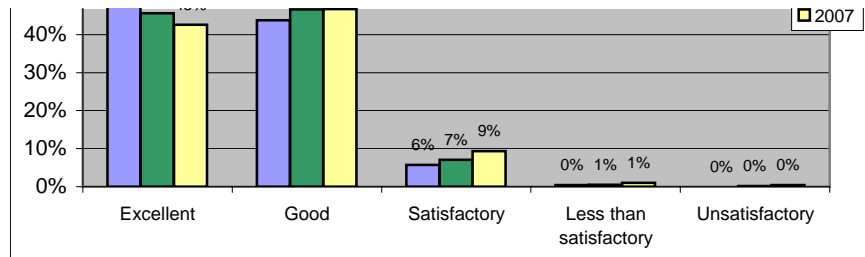
12. How do you rate the bus drivers in terms of attitude?

(Friendly, customer-service oriented, etc.)

	2005	2006	2007

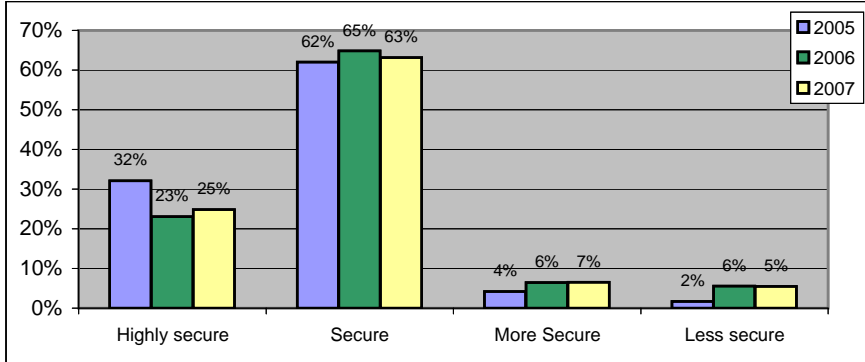


Excellent	483	50%	899	46%	755	43%
Good	422	44%	919	47%	828	47%
Satisfactory	55	6%	140	7%	165	9%
Less than satisfactory	4	0%	10	1%	18	1%
Unsatisfactory	0	0%	3	0%	8	0%
TOTAL	964		1971		1774	



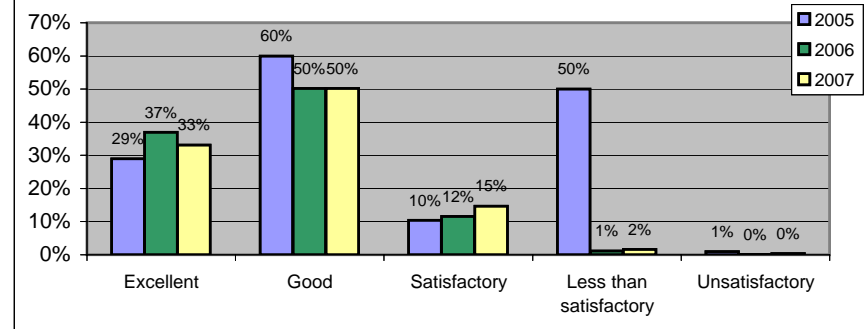
13. How do you perceive the level of security on the GVSU routes - compared to other areas on campus?

	2005		2006		2007	
Highly secure	307	32%	453	23%	462	25%
Secure	593	62%	1272	65%	1174	63%
More Secure	40	4%	127	6%	121	7%
Less secure	16	2%	109	6%	102	5%
TOTAL	956		1961		1859	



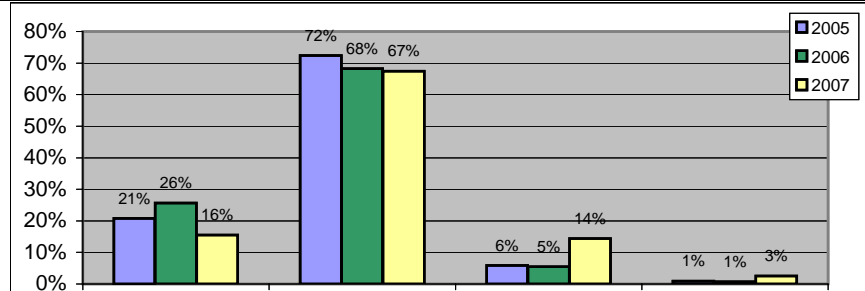
14. How do you rate the bus drivers in terms of driving skill and safety?

	2005		2006		2007	
Excellent	279	29%	728	37%	587	33%
Good	578	60%	987	50%	890	50%
Satisfactory	100	10%	228	12%	261	15%
Less than satisfactory	5	50%	23	1%	29	2%
Unsatisfactory	1	1%	1	0%	7	0%
TOTAL	963		1967		1774	



15. How often are the busses late (arriving more than 5 minutes after the printed schedule time)?

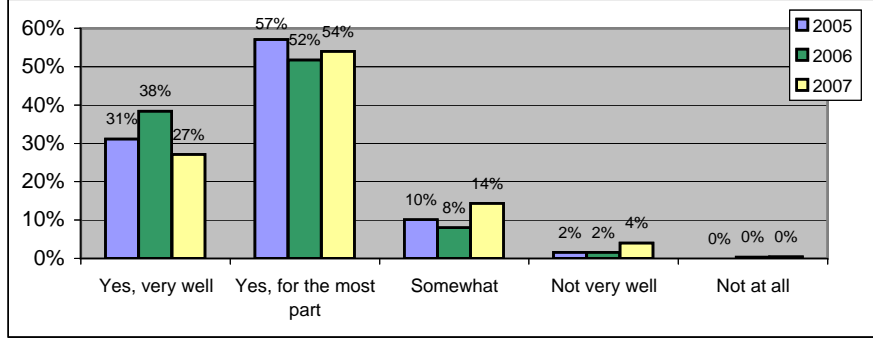
	2005		2006		2007	
Never	198	21%	490	26%	283	16%
Occasionally	689	72%	1305	68%	1229	67%
Often	56	6%	104	5%	263	14%
Always	9	1%	14	1%	47	3%
TOTAL	952		1913		1822	





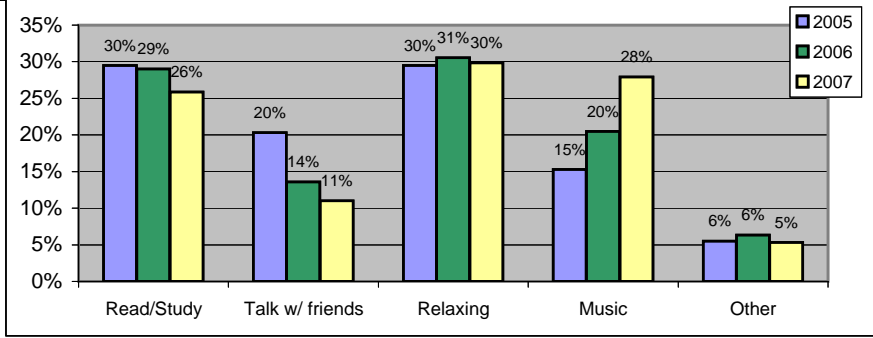
16. Does the current schedule meet your needs?

	2005		2006		2007	
Yes, very well	292	31%	520	38%	484	27%
Yes, for the most part	536	57%	700	52%	965	54%
Somewhat	95	10%	109	8%	257	14%
Not very well	15	2%	21	2%	72	4%
Not at all	0	0%	4	0%	8	0%
TOTAL	938		1354		1786	



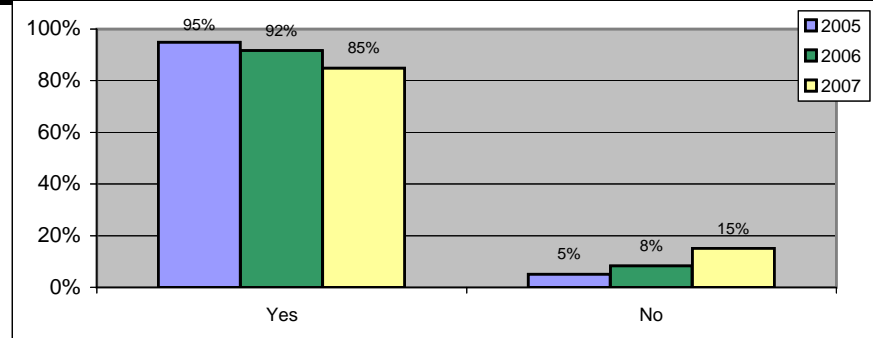
17. How do you spend your time on the GVSU routes?

	2005		2006		2007	
Read/Study	582	30%	571	29%	480	26%
Talk w/ friends	401	20%	267	14%	204	11%
Relaxing	582	30%	601	31%	554	30%
Music	302	15%	403	20%	518	28%
Other	109	6%	125	6%	99	5%
TOTAL	1,976		1967		1855	



18. Do you feel that GVSU is doing it's best to accommodate the students that are in need of the shuttles?

	2005		2006		2007	
Yes	889	95%	1824	92%	1599	85%
No	47	5%	166	8%	284	15%
TOTAL	936		1990		1883	

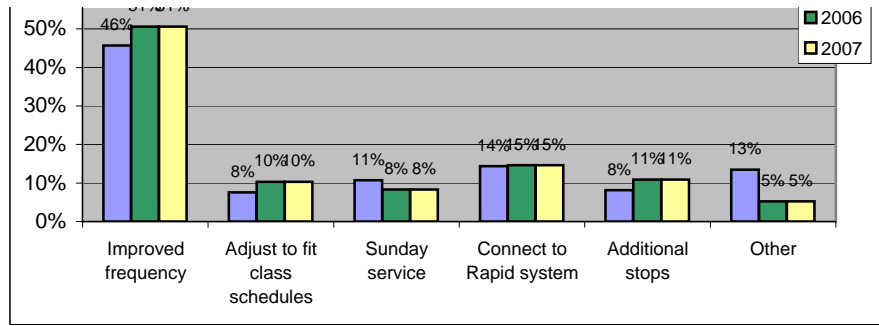


19. What one improvement would you most like to see?

	2005	2006	2007

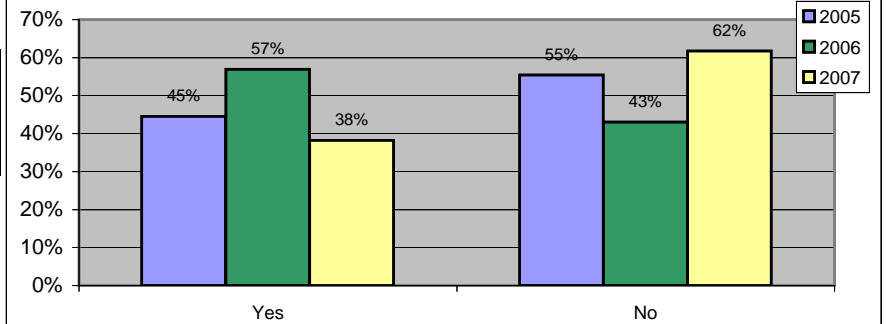


Improved frequency	851	46%	450	51%	763	51%
Adjust to fit class schedules	141	8%	92	10%	83	10%
Sunday service	199	11%	74	8%	160	8%
Connect to Rapid system	268	14%	130	15%	194	15%
Additional stops	151	8%	97	11%	113	11%
Other	251	13%	46	5%	473	5%
TOTAL	1861		889		1,786	



20. If the Campus Connector was offered during official breaks of the University, would you use it?

	2005		2006		2007	
Yes	882	45%	520	57%	3,582	38%
No	1097	55%	393	43%	5,787	62%
TOTAL	1979		913		9,369	



--	--	--

