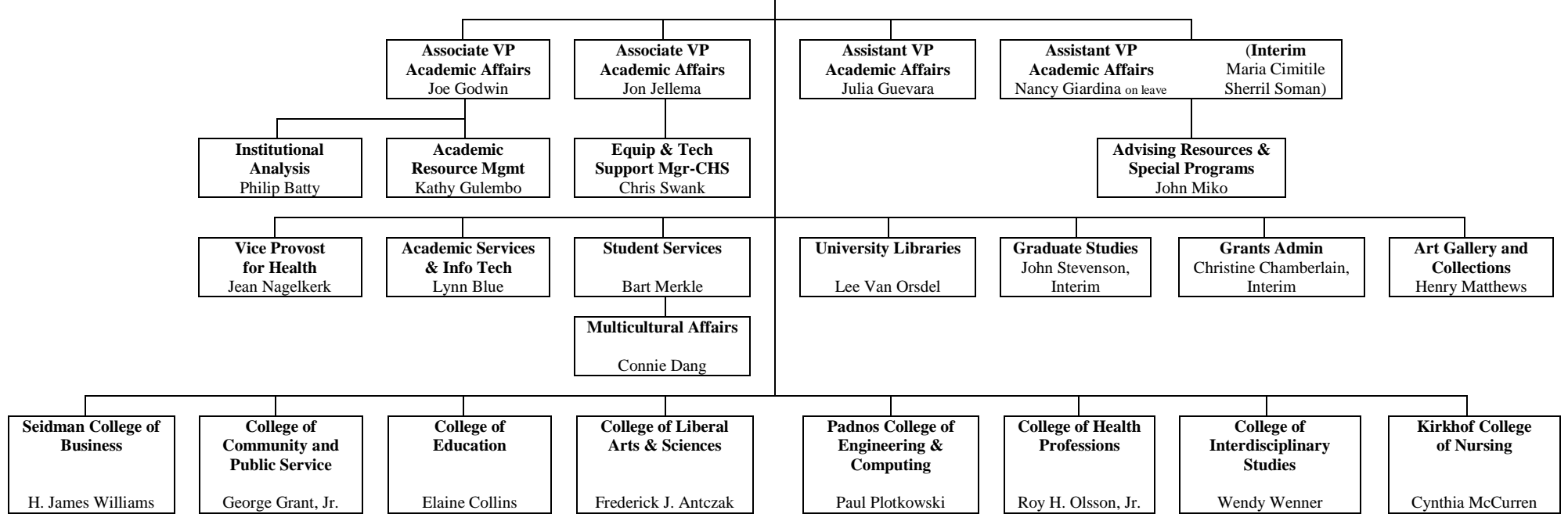


ACADEMIC AND STUDENT AFFAIRS DIVISION
 Gayle R. Davis, Provost and Vice President for Academic Affairs



School of Accounting
 Economics
 Finance
 Management
 Marketing
 Center for Entrepreneurship
 Family-Owned Business Institute
 Small Business & Tech Develop
 Center-State HQ
 Small Business & Tech Develop
 Center-Reg 7 Ofc
 VanAndel Global Trade Center

School of Criminal Justice
 Hospitality & Tourism Mgt
 School of Public & NonProfit Admin
 School of Social Work
 Johnson Center for Philanthropy

Leadership & Learning
 Special Education, Foundations & Technology
 Administrative Services
 Community Outreach

Annis Water Resources Institute
 Anthropology
 Art and Design
 Biology
 Biomedical Sciences
 Cell & Molecular Bio
 Chemistry
 Classics
 School of Comm
 English
 Geography/Planning
 Geology
 History
 Integrated Science
 Internat'l Relations
 Mathematics
 Modern Languages & Literatures
 Movement Science
 Music
 Philosophy
 Physics
 Political Science
 Psychology
 Russian Studies
 Sociology
 Statistics
 Writing
 Reg. Math/Sci Ctr

School of Computing & Info Systems
 School of Engineering

Clinical Lab Science
 Health Professions
 Occupational Safety and Health Mgmt
 Occupational Therapy
 Physical Therapy
 Physician Assistant Studies
 Radiologic & Imaging Science
 Therapeutic Recreation

Area Studies
 African/African-American
 Chinese
 East Asian
 Latin American
 Middle East
 Environ Studies
 Liberal Studies
 Women and Gender Studies
 Ctr Excel. in Sci & Math Ed
 Ctr Scholarly & Creative Excel. Faculty R & D
 Continuing Educ
 General Education
 Honors College
 Integrative Learning
 Kutsche Ofc of Local History
 Meijer Ctr Writing & Mich Authors
 Padnos Intl Ctr
 Pew Fac Teaching & Learning Ctr
 Supplemental Writing Skills
 Sustainable Comm Develop Initiative

Undergrad Programs
 Accel 2nd Degree
 BSN
 RN to BSN
 Graduate Programs
 MSN
 DNP
 Academic Nurse-Managed Health Ctr
 Nursing Research & Fac Develop Ctr