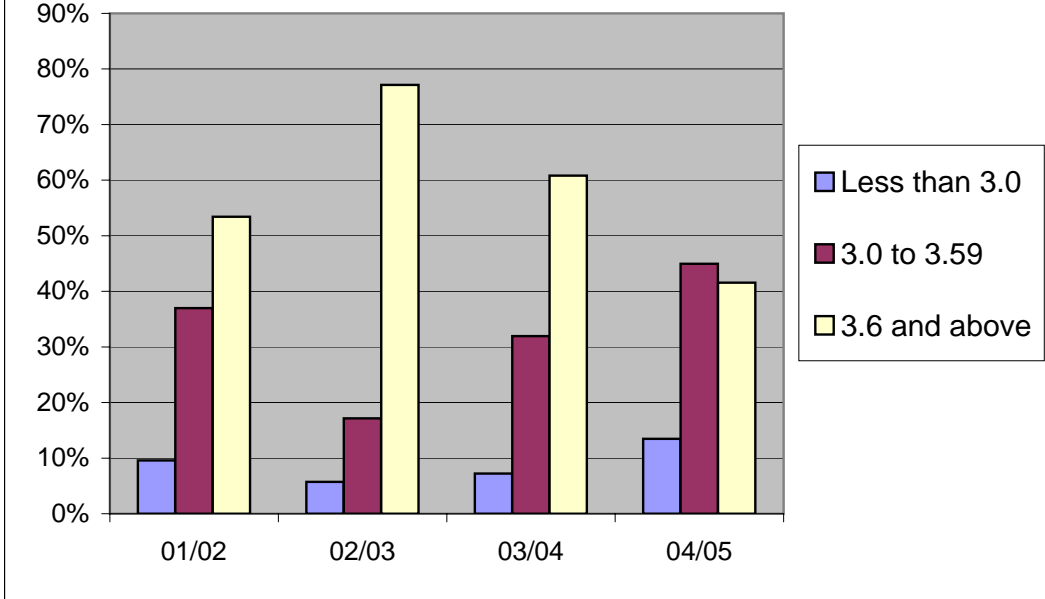


**Advanced Candidate Admissions - SPED LD
2-Year GPA
Fall 2001 - Summer 2005**



Numbers

GPA	01/02	02/03	03/04	04/05	Totals
Less than 3.0	7	4	7	12	30
3.0 to 3.59	27	12	31	40	110
3.6 and above	39	54	59	37	189
Totals	73	70	97	89	329

Percentages

GPA	01/02	02/03	03/04	04/05	Totals
Less than 3.0	9.6%	5.7%	7.2%	13.5%	9.1%
3.0 to 3.59	37.0%	17.1%	32.0%	44.9%	33.4%
3.6 and above	53.4%	77.1%	60.8%	41.6%	57.4%