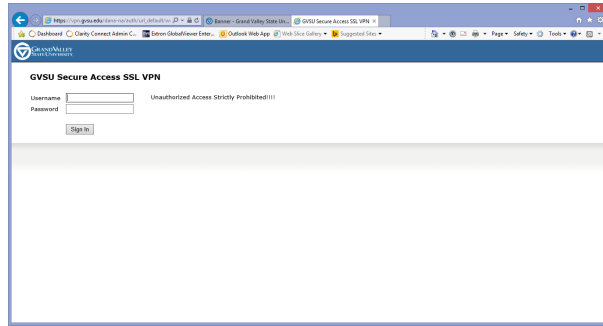
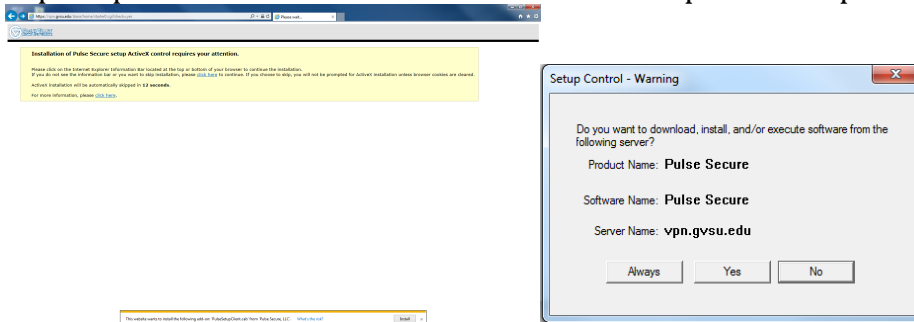


Using the Faculty/Staff VPN website to Load Pulse Secure

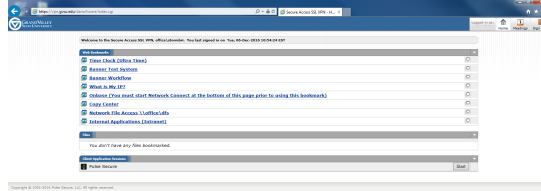
1. From your Web browser, go to <https://vpn.gvsu.edu/> and then enter your username and password:



2. You may be prompted to run the Pulse Secure to install or update. Accept those.



3. With the VPN Web client running you are presented with this page. Clicking the **Start** Button for **Pulse Secure** at the lower right of the page will complete the install .



4. If you need a secured connection to GVSU click the Pulse Secure icon in the Dock on the lower right of the screen by the time (Windows) or upper Right by clock (MacOS). Login and now should now have the secured connection.

