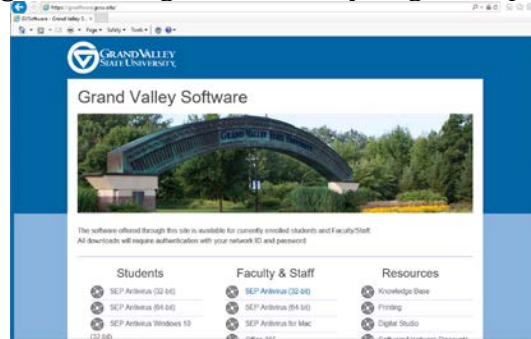


Downloading and Install Junos Client –Pulse Secure

1. From your web browser go to gvsoftware.gvsu.edu And you get the page below:

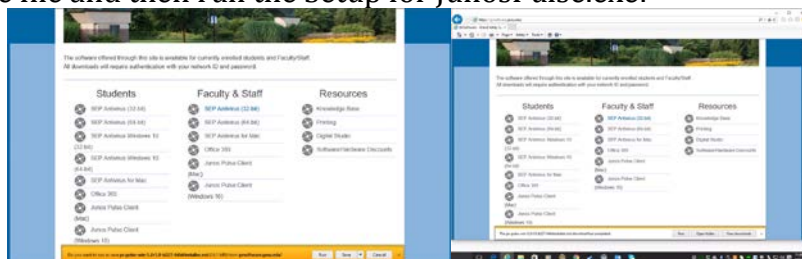


2. From the appropriate column select Student or Staff/Faculty links for Junos Pulse (Windows 10):

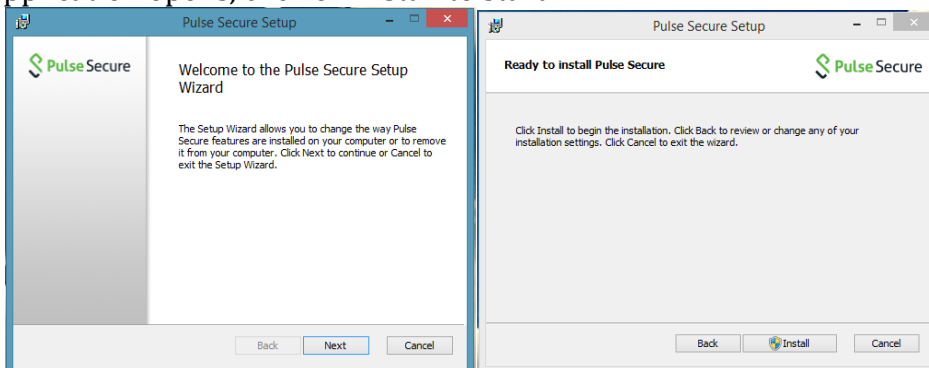


Use your GVSU username and password

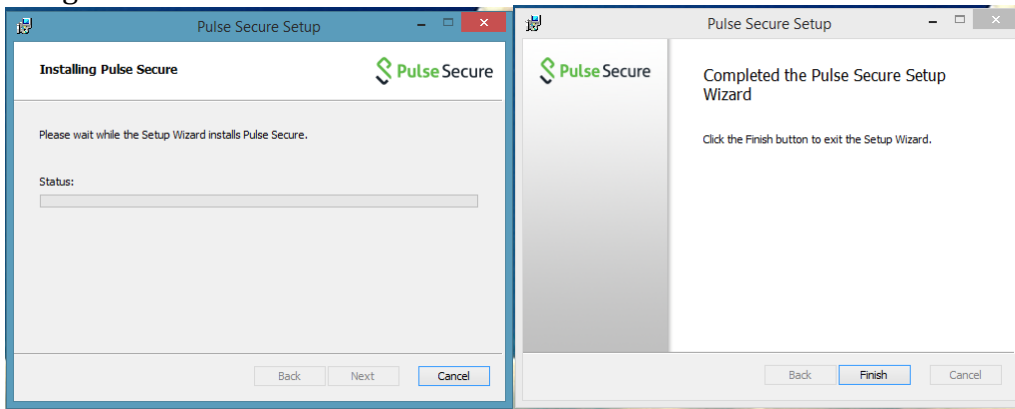
3. Have it download the file and then run the Setup for JunosPulse.exe:



4. When the Application opens, click on Install to start:



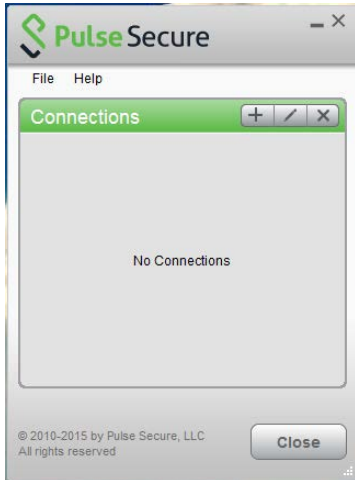
5. It will run through install and then indicate it has finished.



6. Open your **Start** menu (Windows key) and type **Pulse Secure** to directly open the client.

Using Junos Client –Pulse Secure

1. After running installer you will start the application **Pulse Secure**. The following screen will appear with no connections listed:

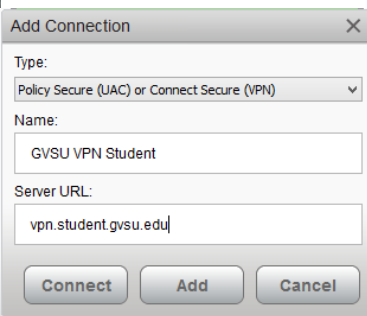


Click the “+” button in upper right corner to create the GVSU connection

2. Fill out the **Name** and **Server URL** just as listed below then click **Add**

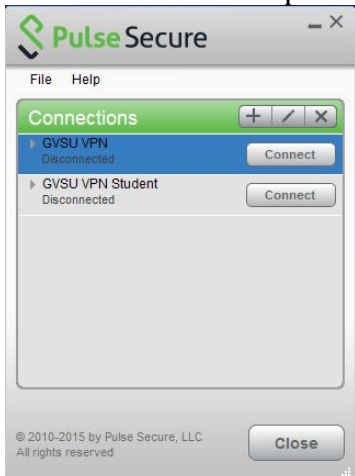


Faculty/Staff



Student

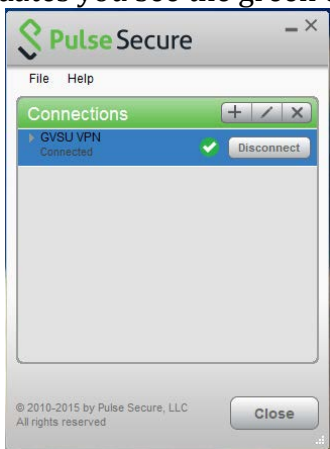
3. Now you have a connection setup that you can use to **Connect** or **Disconnect**



4. When you click on the **Connect** button. You are prompted for your staff login and password (same as Outlook & Blackboard)



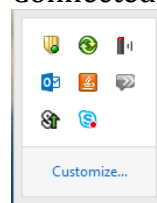
5. After it validates you see the green check circle icon appear by the **Connect/Disconnect** button



6. Finally after you have launched the application the first time, you will now have a new menu bar item for Pulse Secure (Looks like white hollow thin S). From there you can Connect or Disconnect your GVSU secure setting.

7. The icon shows Connection status:

Connected:



Disconnected:

