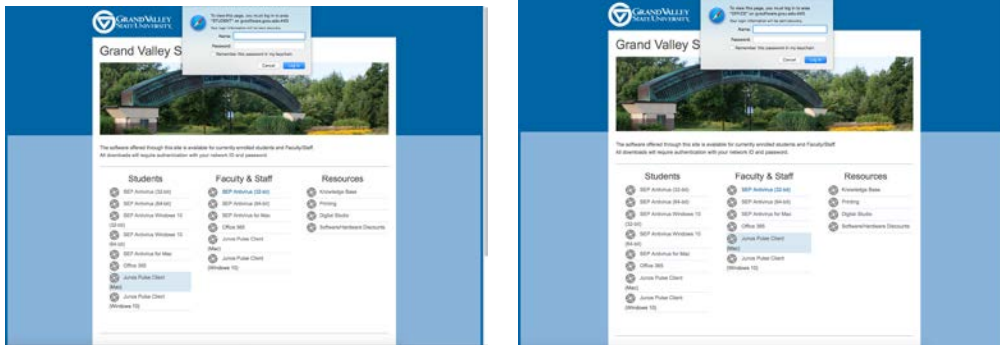


Downloading and Install Junos Client –Pulse Secure

1. From your web browser go to gvsoftware.gvsu.edu And you get the page below:

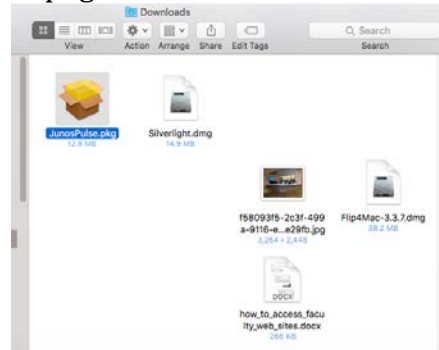


2. From the appropriate column select Student or Staff/Faculty links for Junos Pulse (Mac):

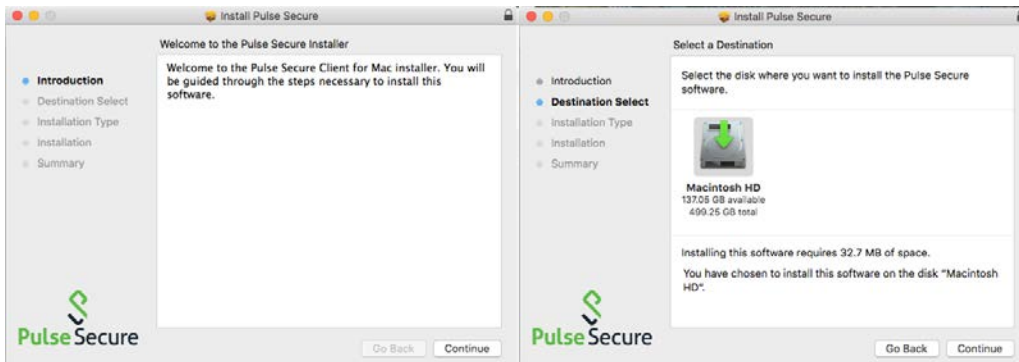


Use your GVSU username and password

3. Find the downloaded file JunosPulse.pkg in Downloads or on Desktop:

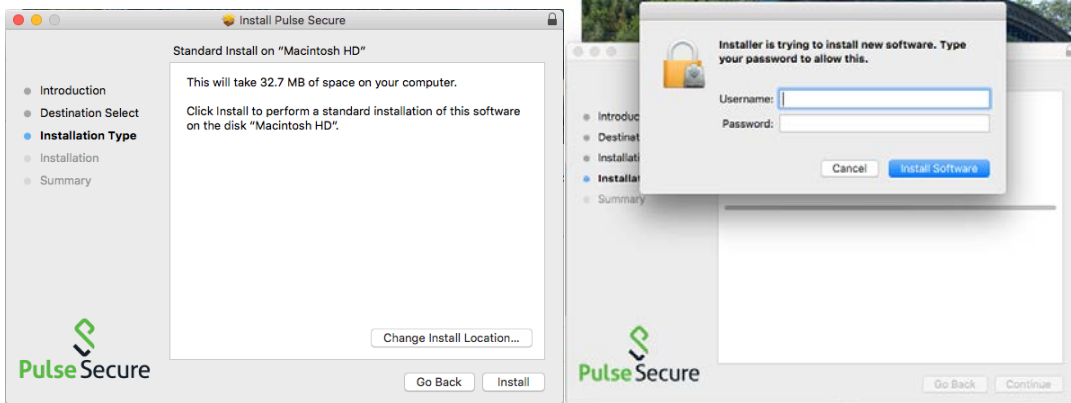


4. Double click to start Install:



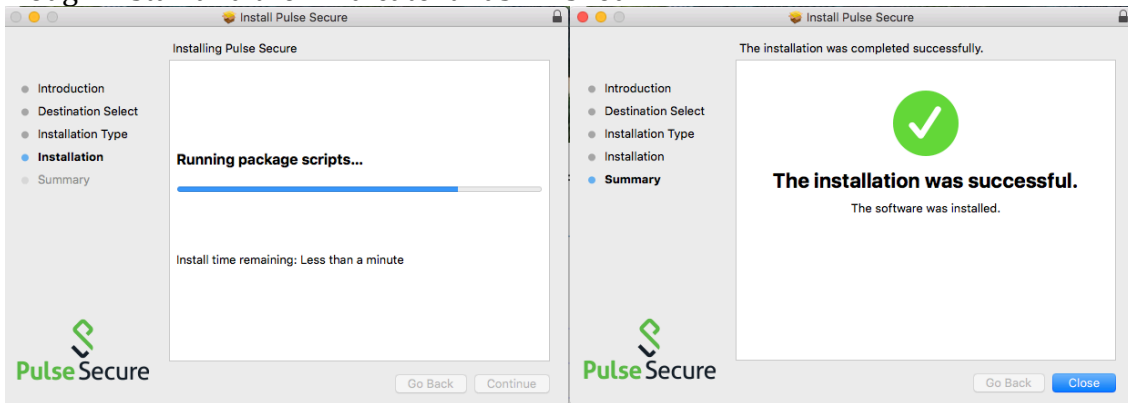
Click Continue

5. Finally click on Install to start:



Enter your Macs login username and password when asked

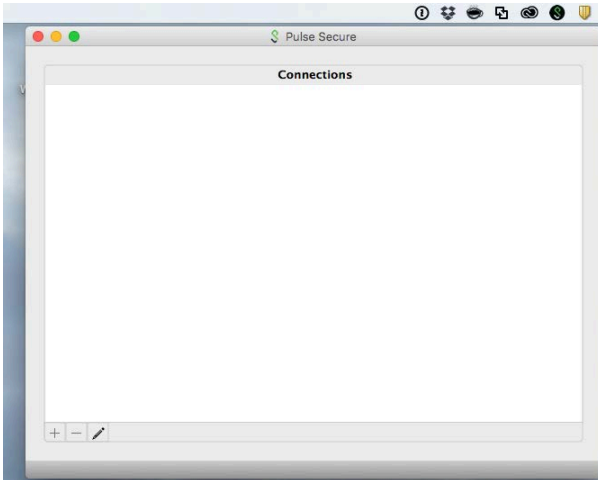
6. It will run through install and then indicate it has finished.



7. Open your hard drive, go to Applications, and open Pulse Secure. Follow next steps for configuring it.

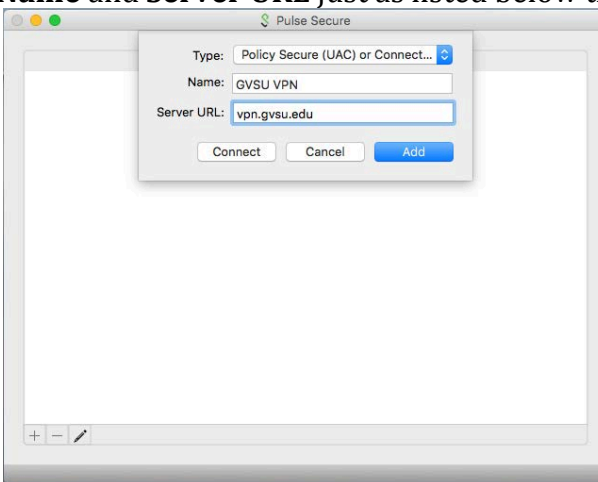
Using Junos Client – Pulse Secure

1. After running installer you will start the application **Pulse Secure**. The following screen will appear with no connections listed:

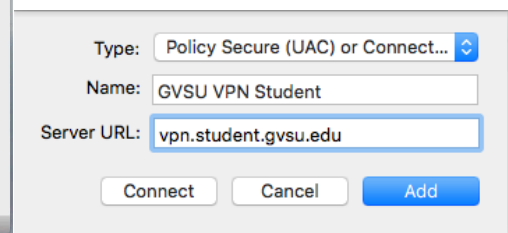


Click the “+” button in lower left corner to create the GVSU connection

2. Fill out the **Name** and **Server URL** just as listed below then click **Add**

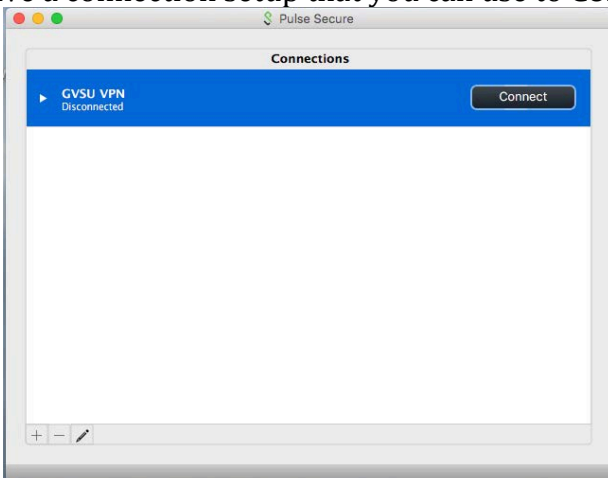


Faculty/Staff

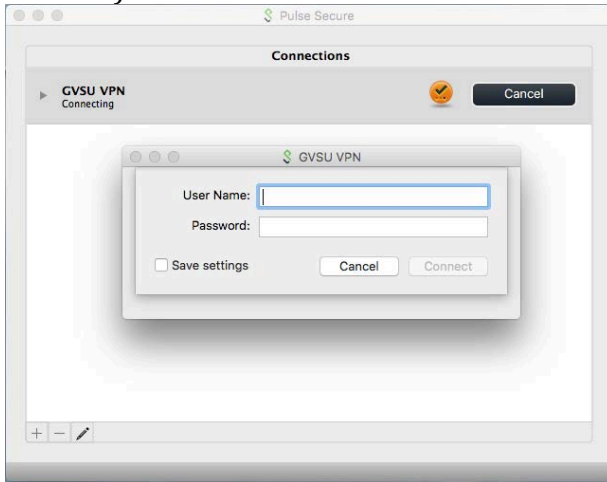


Student

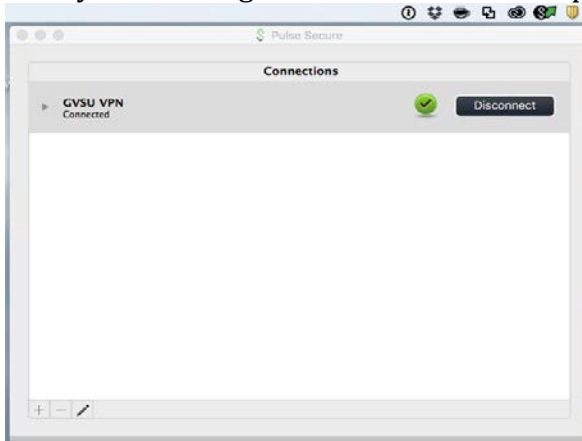
3. Now you have a connection setup that you can use to **Connect** or **Disconnect**



4. When you click on the **Connect** button. You are prompted for your staff login and password (same as Outlook & Blackboard)



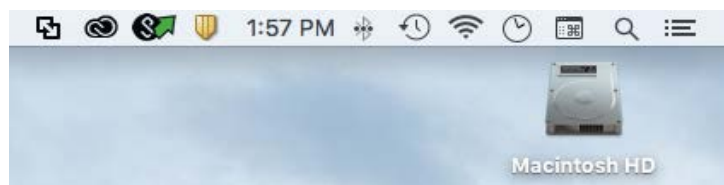
5. After it validates you see the green check circle icon appear by the **Connect/Disconnect** button



6. Finally after you have launched the Application the first time, you will now have a new menu bar item for Pulse Secure. From there you can Connect or Disconnect your GVSU secure setting.

7. The icon shows Connection status:

Connected:



Disconnected:

