



Anthropology **Alumni Newsletter**



In this issue



Letter from the Chair	2
Anthropologists in the Field	3
Scholarship Recipients	3
Anthropology in the Moivies.....	4
New PhD.....	4



Interns in West Michigan.....	5
Lambda Alpha	5
Underwater Archaeology	6
Graduation	7
Updates from the Lab	8

Letter from the Chair

Deana Weibel



The 2012-2013 school year was a great one for the Anthropology department at GVSU. We welcomed new assistant professor Michael Wroblewski, who specializes in linguistic anthropology, especially the link between language and power among Kichwa and Spanish speakers of Ecuador. He took over the Language and Culture class in fall 2012 and offered a winter class on the Ethnology of Indigenous Latin America.

Long-time professor Cindy Hull retired after fall semester 2012, and was fêted by the department at a fun gathering at Connor Bayou. Cindy will stay connected to the department as an Emerita Professor, spending the warm part of the year in Michigan and paddling through the waterways of Florida with her husband Bo during the winters.

Our newly tenured and promoted faculty members (Madden, Molla and Van Wormer) took well-deserved sabbaticals full of research and writing. Russell Rhoads began a new research project in Sierra Leone, studying post-conflict education. Jan Brashler continued work on various publications and as Curator of the anthropology lab. Mark Schwartz increased his research focus on underwater archaeology, looking at shipwrecks in Lake Michigan. Elizabeth Arnold continued her fascinating Tel es-Safi project in Israel, and her prospectus asking to include GVSU students in this research starting in 2015 was approved by GVSU's International Education Committee. Judi Corr took on the massive responsibility of chairing the CLAS Curriculum Committee, and announced her upcoming retirement at the end of winter semester 2014. Dale Borders continued to combine work as a veterinarian with excellent teaching of archaeology and physical anthropology. I got my feet wet as the new unit head and co-edited a book on conducting ethnographic research in religious communities.

Anthropology's wonderful adjunct instructors, Pamela Galbraith, Angela Reed, Erica Begun and Christy Mello had a fantastic year as well. In fact both Erica and Christy expertly defended their doctoral dissertations this spring, and GVSU anthropology alumna Christy amazed us all by becoming a new Ph.D. and a new mom within a span of 10 days!

Speaking of alumni that make us proud, we had a terrific group of graduates this year representing the department at both the December and April commencement ceremonies. We also inducted some new members to the Anthropology Honor Society, Lambda Alpha, and arranged for new red, black, green and white cords (representing the Level One color terms anthropologist Harold Conklin identified to be in use among the Hanunoo of the Philippines) to be worn with graduation regalia.

Our department continues to grow and transform. During the 2013-2014 year look for some changes in faculty, lab staff and location – we'll be moving in the summer of 2014 to our new digs (archaeology joke, ha ha), with offices and more student space in Lake Michigan Hall. Keep an eye out for an upcoming alumni event this fall, and stay up to date through the GVSU Anthropology Alumni Facebook page at <https://www.facebook.com/groups/57877596033/?fref=ts>

Stay in touch with us. We'd love to hear from you!

All the best,
Deana Weibel
Chair of Anthropology



Tell Us Your Story!

Keep in touch with the GVSU Anthropology department and alumni by sharing your story. Tell us of your adventures, challenges, and successes in life as an anthropologist after graduation. Contact Aaron Howe, Anthropology Lab Supervisor at howear@gvsu.edu to submit your story to share.

Anthropologists in the Field -Summer 2013



Picture courtesy of;
<http://foter.com/f/photo/2339375140/34b045f401/>

Dr. Madden, and Fifteen anthropology majors, will be traveling to London, England for the month of July, 2013. The students will be participating in a physical anthropology field experience. They will be collecting data from human remains at the Museum of London, which houses a large number of historic remains from the UK. Students will be working in groups of three on research projects that will include the data collection, statistical analysis, and formatting/writing of a research paper to be published in anthropological journals. Students will also be taking ANT 330 Myth and Ritual in Great Britain, which will include visits to a number of museums, historic, and pre-historic sites.

Professor Elizabeth Arnold is developing a Study Abroad in Israel working at the site of Tell es-Safi/Gath in Israel, which will be available to students in the summer of 2015 subject to final approvals (fingers crossed)! She is returning to Safi this summer working as the zooarchaeologist isotope specialist on the project from the end of June until the end of July.

Check out the site's blog by the director to keep up with this summer's excavations.

<http://gath.wordpress.com/>

Professor Azizur Molla is currently collaborating with colleagues from the Annis Water Resource Institute (AWRI), the Geology department and the Hospital Albert Schweitzer (HAS) in Haiti on a research project titled "Transdisciplinary Assessment of How Socioeconomic, Geologic, Public Health and Cultural Factors Influence Drinking Water Quality in Rural Haiti." Professor Molla brought his expertise to this project from work he has done in Bangladesh on water quality and disease. Professor Molla has recently completed two other studies involving health risks of indoor radon gas in west Michigan and a field school conducted in 2011 assessing military veteran's healthcare in the Grand Rapids area. He also completed a survey of Veterans health in Bangladesh.



Taylor Rose



Megan Roche



Jacquelyn Heuer



Ross Lamberts



Ashleigh Lewis

Congratulations Scholarship Recipients!

**Richard E. Flanders
University Club
Scholarship:**



Ashleigh Lewis, Kelsey Hanson, Sophia House

Walton Boston Koch Scholarship:

Ross Lamberts, Meagan Roche

Quimby Scholarship:

Jacquelyn Heuer, Taylor Rose



Sophia House



Kelsey Hanson

Anthropology in the Movies

Anthropologists don't often get to be represented in the movies (well, archaeologists Indiana Jones and Lara Croft are exceptions) but occasionally you'll find some interesting old films that represent the profession in somewhat questionable ways. I bring to your attention to one of these interesting finds, *Trog*

Trog was the last feature film ever made by silver screen star Joan Crawford. In it, she plays physical anthropologist Dr. Brockton who seems to run a clinic of some kind in a small English village with no apparent connection to any kind of college or museum. We see her tending to a patient at one point, a student who is the sole survivor of a spelunking expedition turned tragic – after the cave explorers encounter an unfrozen caveman. Brockton, a steely woman often armed with a rifle, is determined to capture this troglodyte (whom she christens “Trog”) alive. Intense arguments take place in the film about the relative value of having a living fossil available to science (can they teach Trog to speak?) versus the inherent danger represented by a violent throwback who remembers living with the dinosaurs and loves wind-up dolls. This movie is not grounded in anything resembling science, but is very entertaining if you like a particular type of bad movie.

Representative quotation:

Dr. Brockton: We believe that Trog could be the connection between the creatures of early civilization and man as we know him today. This Troglodyte who somehow survived is a living reminder of what happened after our ancestors the apes left the forest, and first started to walk on hind legs, and take shelter in the caves.

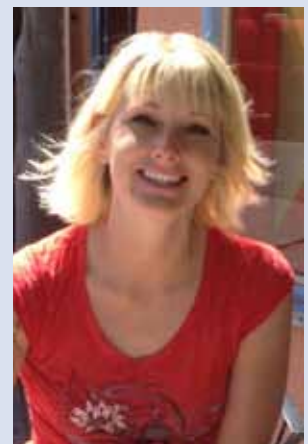


Congratulations!



Erica Begun

Congratulations are in order to two of our part-time instructors, Erica Begun and Christy Mello on the successful defense of their PhD dissertations. Erica is graduating from the University of Iowa and her research is on an ethnic enclave in the Mexican site of Teotihuacan. Christy Mello is graduating from the University of New Mexico and did her research on food security in Grand Rapids. Christy is a GVSU anthropology graduate from 2005.



Christy Mello

Interns Explore Food Insecurity in West Michigan



Over the past three years, nine anthropology students have interned at the Fulton Street Farmers Market to learn about food insecurity in Grand Rapids. Farmers markets are expanding urban food-availability by providing fresh, healthy food across a range of social groups, including under-served populations. In particular, Dr. Rhoads and Melissa Harrington (market manager and GVSU anthropology alumna) involve students in managing the EBT electronic “food stamp” system as a way to provide access to market products for people receiving government food assistance. The internships are also good training for developing research skills and people-to-people communication. For example, intern Rebecca Alberda (2012, photo), conducted a “Rapid Market Survey,” gathering information from market-goers to help the manager adjust operations to align with consumer needs. Alberda was awarded the Market’s annual Most Outstanding Volunteer award. Another student, Elizabeth Thomas (GVSU anthropology alum) was hired at the market as paid staff over the past two summers, beginning her interests in local food systems as a farmers market intern before that. In his research, Dr. Rhoads is exploring the “web” of electronic

interface and how it affects strategies for building face-to-face people/product networks and builds equitable access. Recently he presented a presentation, “Equitable Access at Farmers Markets: Electronic Interface and the Food Assistance Movement,” at the Annual Meeting of the Society for Applied Anthropology held in Denver, Colorado.

Lambda Alpha

In April we welcomed ten new initiates into Lambda Alpha. Lambda Alpha is the National Scholastic anthropology fraternity. Grand Valley State University’s Michigan Beta Chapter of Lambda Alpha is dedicated to promoting and recognizing scholarly achievement by students working toward degrees or minors in anthropology; or students with a strong interest and background in anthropology.



Pictured from left to right are: Kylee Hassevoort, Julia Strunk, Sarah Corrello, Robert Veldman, Carl Morton, Valerie Clanton, Madeline Weinberger, Christina Uplinger.

Not pictured Mary Peterson, Seth Price

Underwater Archaeology

The Schooner Rouse Simmons

by Dr. Mark Schwartz

Last June a collaborative team used a remote operated vehicle (ROV) with a high definition camera to further explore and document the wreck of the “Christmas Tree” schooner. The Schooner Rouse Simmons, met disaster in Lake Michigan bringing its holiday cargo from the Upper Peninsula of Michigan to Chicago in 1912. The use of ROVs has provided the public at large the chance to get a first hand view of many important wrecks throughout the world.



A view of the bow of the Rouse Simmons from June 2012

One of the debates concerning the Rouse Simmons is what exactly caused her end.



Members of the expedition stand next to the ROV (from left) Jesse Tackett, GVSU; Geoff Cooke, Seaview Systems; Mark Gleason, USS Silversides Museum; Mark Schwartz GVSU

We are analyzing footage from the wreck in an attempt to determine if the destruction of the helm had anything to do with the demise of the Rouse Simmons.

Other contributing factors to her sinking were her poor condition and the erroneous belief of the time that a cargo of lumber would keep a ship afloat despite a leaky hold.

The expedition this summer was organized by members of the Two Rivers' community and included local students, members of the Rogers Street Fishing Village Museum, Seaview Systems of Dexter MI, the Great Lakes Naval Memorial and Museum, the ANNIS Water Research Institute and the Anthropology Department of Grand Valley State University.

Stay Connected



Keep in touch! Go to Alumni Relations at http://www.gvsu.edu/alumni/update_contact_info.htm to enter your current mailing address and email to receive our next paperless e-newsletter.

Also, find us on facebook-
Grand Valley State University Anthropology Alumni



Power of Giving

Your gift to Grand Valley State University is an investment in the future of our students, West Michigan and our state. Go to <http://www.gvsu.edu/giving/> or call 616-331-6000 or e-mail universitydevelopment@gvsu.edu, to find out how your gift can make a difference in the lives of students.

Congratulations Graduates!

Majors:

Dan Aistrop
Adriana Berent
Chelsie Brokenhsire
Mara Deckinga (cum laude)
(Bio)
Laramie Dickenson (Psy)
Audrey Fancher
Kylen Pattermann
Rebeca Sastre (magna cum laude)
Pat Schaefer
Kelsey Shaw
Stephanie Sicard
Julia Strunk (magna cum laude)
Emily Teall (magna cum laude)
Christina Uplinger
Robbie Veldman
Shelby Woodby
Anna Zaroff



Minors:

Leah Froysland (Spanish, magna cum laude)
Lindsey Goetz (Psy)
Kylee Hassevoort (Psy)
Laurie Kensler (BMS)
Samantha Montgomery (Psy)
Hayley Pangle (History, magna cum laude)
Miranda Ray (Psy)
Sammantha Schmiedeknecht (Psy)
Audrey Sochor (Journalism)
Margie Thomas-Boyd (History)
Sarah Vieau (History)

Where Are They Now??

After graduating from Grand Valley in 1999 with a Bachelor's in Anthropology, Sean Stretton got a job working as an archaeological technician doing cultural resource management survey work in Illinois working for PSA&AP, the Public Service Archaeology & Architecture Program through the University of Illinois in Champaign-Urbana. While working for PSA&AP, Sean honed his archaeology field skills, developed skills in GIS and mapping and developed a career in archaeology. These skills in GIS and mapping have allowed Sean to participate in projects in Kenya and Ethiopia. In Kenya, Sean used his GIS and GPS skills to help map remnant



beach ridges and site locations on the shore of Lake Turkana in the Mt. Por region. In Ethiopia, Sean again used his GPS and GIS skills to map locations of archaeological sites and ritual locations, developed topographic maps of archaeological sites and used GIS to build three dimensional models of the mapped sites and study region. Two years ago, after working in CRM for 11 years, Sean started his next step and will complete a Master's degree in Anthropology with an archaeology emphasis, at Illinois State University in Normal, Illinois. With a Master's in hand, Sean will be able to become the principle investigator on field projects. His master's thesis is drawing on his GIS skills and his long standing interest in Middle Woodland archaeology that developed partly through his participation in the GVSU archaeological field schools at Prison Farm, a Middle Woodland site GVSU excavated in 1996, 1997 and 1999.



NONPROFIT
U.S. POSTAGE
PAID
GRAND VALLEY
STATE UNIVERSITY

Return Service Requested

1 Campus Drive
Anthropology Department
1 Campus Drive
Allendale, MI 49401

Lab Update



Pictured: Aaron Howe, 2013

Kristina Weighmink, our lab supervisor for almost three years, completed a Master's in Higher Education Administration in December 2012. In February, Kristina took the next step in her career and is now a health communications specialist for Ottawa County, a position that allows her to use a variety of skills she acquired in community college and at GVSU. In the meantime, the lab is being staffed by Aaron Howe, recent GVSU anthropology graduate, who is heading to Western Michigan for a Master's in Anthropology this fall. He is going to be doing his thesis on Blendon Landing, the 19th century logging village and industrial operation located on campus. We are currently conducting a search for a new half time lab supervisor.

This summer the lab is busy with students from the Ethnographic Field School. In addition, we are beginning a major inventory of all the teaching materials (microscopes, hominid casts, slides – still have some!), comparative collections, library resources, digital recorders, cameras and other 'stuff' we have acquired over the years as we have grown from the small operation in the basement. Some of our more interesting teaching materials are primate comparative skeletons Bob (human), Cornelius (chimpanzee) and Jack (the macaque). We are getting ready for our big move at the end of the summer 2014 when the department offices and lab(s) will all be located on the 2nd floor of Lake Michigan Hall. The move is part of the 'big shuffle' on campus following the opening of the new library (<http://www.gvsu.edu/library/newbuilding/media-5.htm>). As part of the shuffle, Zumberge will become centralized administration. All of the administrative offices will be moved to Zumberge.