



Grand Valley State University  
Disability Support Services

---

Guide to Assistive Technology

GVSU MAGic 10.5 Quick Reference Guide

Prepared by Jeff Sykes, Assistive Technology Coordinator, Disability Support Services

**MAGic Screen Magnifier by Freedom Scientific** provides screen magnification and visual enhancements to provide computer access to individuals who have visual impairments. MAGic integrates with JAWS for Windows, a screen reader designed to allow computer access to users who are blind. JAWS supplements MAGic with screen reading capabilities to allow nearly complete computer access to individuals who are blind or who have a visual impairment.

In this quick reference guide to MAGic 10.5, both mouse and keyboard (HotKey) commands are listed for navigating through various functions and settings. MAGic menu item ALT-key shortcuts are referenced.

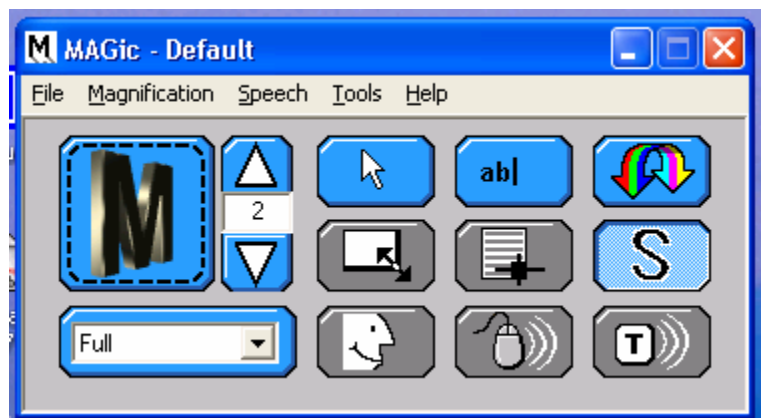
This is a quick reference guide to MAGic 10.5, and is not intended as a comprehensive user's manual.

MAGic can be launched in the GVSU lab environment by double-clicking the desktop icon, or by pressing Alt + Control + M, or by opening the Start Menu (Windows Key + Tab + Enter) select All Programs, Select MAGic, choose MAGic. MAGic can be launched on a home computer in the same way. To quit MAGic click the Close Application button, or by the File menu command Alt-F-X, or by using the hotkey Alt-F4.

The MAGic key, which is referenced throughout this guide, is the CapsLock key.

The MAGic user interface allows easy control of MAGic's features via menu commands or by using a mouse.

### The MAGic User Interface Window



In the GVSU lab environment speech functions are not available directly from MAGic. Speech is provided by the JAWS screen reader. JAWS must be run simultaneously along with MAGic in order for speech to be available.

### **MAGic interface**

The MAGic interface window displays buttons and menus for controlling MAGic. The top two rows of buttons control visual enhancements, such as mouse pointer and cursor enhancements, color enhancements, and font smoothing. These buttons are blue when the feature is available and gray if the feature is unavailable. The bottom row of buttons is used to control speech functions, and is not used with the version of MAGic installed in the GVSU computer labs.

### **Visual enhancements available within MAGic**

**The Magnification button** enables or disables magnification. This provides a quick way to turn screen magnification on or off.

HotKey: MAGic Key + Delete

**The Magnification Level buttons adjust the level of magnification from 1x to 16x.** MAGic provides magnification in whole power increments from 2x to 16x, and in 1/10th x increments between 1.1x and 1.9x

HotKeys:

Increase magnification - MAGic Key + NumPadPlus, or Control + equals,  
Decrease magnification: MAGic key + NumPadMinus, or Control + dash

**The Magnified View List selects the magnification window type.** This is used to set preferred type of magnified view from the options of Full, Overlay, Split, Dynamic Lens, and Lens.

- Full - magnifies the entire screen
- Overlay - provides a magnification window that is docked on one corner of the screen. This window follows the mouse pointer or the focus.
- Split - Provides two views of the screen following the mouse pointer or focus. One view is magnified; one is unmagnified and used as a reference.
- Lens - provides a rectangular magnification window that can be dragged around the screen with the mouse or moved by the keyboard as the focus changes.
- Dynamic Lens - same functionality as the Lens magnification view, but is

automatically resized when controls are selected.

The preferred magnified view setting can be made through the Magnification menu by selecting the Display property sheet. HotKey - Alt-M + D.

The View options are listed in a combo box.

HotKeys:

View combo box - Alt-V

Magnification level spinbox- Alt-M

Smooth Text checkbox - Alt-S

**The Mouse Enhancements button turns mouse pointer enhancements on and off.** Mouse pointer enhancements are set by opening the Magnification menu, and selecting Mouse Enhancements Mouse enhancements include various pointer colors, sizes, and crosshair schemes. The list of available options for both magnified and unmagnified areas of the screen are the same. Magnified and unmagnified areas of the screen can be schemed differently. Several pre-written schemes are also available.

Mouse Enhancements button HotKey: MAGic Key + F4.

Mouse property sheet HotKey: Alt-M + M.

(Options are the same for both magnified and unmagnified areas, and are set on separate tabs)

Enable Mouse Enhancements - Alt-E

Color combo box for mouse attributes - Alt-C

Style combo box - Alt-S

Color combo box - Alt-O

Display combo box - Alt-D

Transparency slider - Alt-T

Thickness slider - Alt-K

Length slider - Alt-L

Height slider - Alt-H

Mouse Schemes settings

Enable Mouse Enhancements checkbox- Alt-E

Select Scheme - Alt-C

Automatically apply Schemes checkbox - Alt-U

Restore Factory Settings - Alt-R

**Cursor Enhancements button turns cursor enhancements on and off.** Cursor enhancements are set though the Magnification menu by selecting the cursor enhancements property sheet. Cursor enhancements include various cursor colors, shapes placed around cursor, and settings for transparency, thickness, and length or the cursor. The list of available options for both magnified and unmagnified areas of the screen are the same. Magnified and unmagnified areas of the screen can be schemed differently. Several pre-

written schemes are available.

Cursor Enhancements HotKey: MAGic key + F8.

Cursor Enhancements property sheet HotKey: Alt-M + U  
(Options are the same for both magnified and unmagnified areas, and are set on separate tabs)

Enable Cursor Enhancements - Alt-E

Color combo box for cursor attributes - Alt-C

Style combo box - Alt-S

Color combo box - Alt-O

Display combo box - Alt-D

Transparency slider - Alt-T

Thickness slider - Alt-K

Length slider - Alt-L

Height slider - Alt-H

Cursor Schemes settings

Enable Cursor Enhancements checkbox- Alt-E

Select Scheme - Alt-C

Automatically apply Schemes checkbox - Alt-U

Restore Factory Settings - Alt-R

**Color Enhancements button turns color enhancements on and off** Color enhancements are set though the Magnification menu by selecting color enhancements. Color enhancement options include inverted brightness, inverted colors, inverted black and white, adjustments for brightness and contrast, various color schemes, and color switching. The list of available options for both magnified and unmagnified areas of the screen are the same. Magnified and unmagnified areas of the screen can be schemed differently. Several pre-written schemes are also available.

Color Enhancements button HotKey: MAGic key + F12

Color Enhancements property sheet for both HotKeys: Alt-M + C.  
(Options are the same for both magnified and unmagnified areas, and are set on separate tabs)

Enable Color Enhancements checkbox - Alt-E

Invert Brightness- Alt-G

Invert Colors - Alt-I

Invert Black and White - Alt-V

Restore System Colors - Alt-Y

Adjust Brightness (slider) Alt-B

Adjust Contrast (slider) Alt-R

Enable Monochrome and Tint - Alt-T, Color selection - Alt-C, Level - Alt-L,  
Blend - Alt-N  
Enable Color Switching - Alt-S, Color - Alt-O, With Color - Alt-H, List of  
active color switches - Alt-A  
Color Schemes settings  
Enable Color Enhancements checkbox- Alt-E  
Select Scheme - Alt-C  
Automatically apply Schemes checkbox - Alt-U  
Restore Factory Settings - Alt-R

**Resize view allows resizing of magnification window** Resize View allows the user to change the size of the magnified view. After a user clicks on the Resize View button the mouse pointer will appear as a bi-directional cross, and allow the user to drag the borders of the magnification window to resize. Usable only in Split, Overlay, Lens, and Dynamic lens magnification views.

No HotKey - this operation requires the mouse.

**Locator button turns Locator tool on and off.** The Locator tool temporarily presents the entire screen unmagnified, and a magnification window with preset visual enhancements. This enables the user to locate and magnify screen objects more easily. The Locator window can be repositioned to a new region of the screen, and the entire screen re-magnified. Locator settings are set through the Magnification menu by selecting the Locator property sheet.

Locator HotKeys:

Start Locator MAGic key + F10

Stop Locator, move to selected area and re-magnify – Enter

Stop Locator without moving – Escape

Locator property sheet HotKey: Alt-M + L

**Smoothing button turns Smoothing tool on and off.** The Smoothing tool removes the jagged edges of letters in magnified view to enhance readability. The Smoothing tool can be accessed through the Magnification menu by selecting the Display property sheet and checking the checkbox labeled Smooth Text.

Display property sheet HotKeys - Alt-M + D

Smooth Text checkbox HotKey - HotKey Alt-S.

## **Speech options available in MAGic Without Speech**

Highlight Options are available in MAGic. MAGic Without Speech is interoperable with JAWS for Windows. Users must run JAWS along with MAGic for document and web reading.

**Highlight options** Highlight Options are available in MAGic Without Speech when JAWS is concurrently running and providing speech for the user.

Highlight options are accessed by opening the Speech menu and selecting Highlight Options.

Hotkey: Alt-S + H

Settings hot keys:

Highlight Style combo box - Alt-H

Color combo box - Alt-O

Transparency slider - Alt-T

Thickness slider - Alt-K

## **Speech and reading functions available in MAGic when used with JAWS**

JAWS for Windows is a screen reader designed to allow individuals who have blindness to access and use a computer. JAWS interacts with the Windows Operating System and provides spoken feedback by announcing icon names, menu items, and Windows messages – essentially any visual text information communicated to a user by Windows can be announced to the user. JAWS provides document and web reading functions by the use of various keystroke commands.

### **Document reading**

JAWS key commands for document reading:

"Say All" (Read from cursor location) - Insert + DownArrow  
MAGic will highlight text as it is read.

The following commands require the NumLock be turned off.

Read character - NumPad 5

Read word - Insert + NumPad 5

Spell word - Insert + NumPad 5 pressed twice

Read previous paragraph - Control + Up Arrow

Read next paragraph - Control + Down Arrow

Read prior word - Control + Left Arrow

Read next word - Control + Right Arrow

Read character to the left - Left Arrow  
Read character to the right - Right Arrow  
Read line - Insert + Up Arrow  
Read current line to cursor - Insert + NumPad 7  
Read current line from cursor - Insert + NumPad 9  
Read application status bar - Insert + NumPad 3  
Read application title bar - Insert + NumPad 1  
Start Skim Reading - Control + Insert + Down Arrow

JAWS navigational commands  
Move to beginning of line - Home  
Move to end of line - End  
Scroll up one screen - Page Up  
Scroll down one screen - Page Down  
Move to top of prior page - Control + Page Up  
Top of next page - Control + Page Down  
Move to beginning of document - Control + Home  
Move to end of document - Control + End

## **Web reading**

JAWS allows web page reading using the same key commands as are used for document reading. Additionally, JAWS uses a feature called the Virtual PC Cursor for reading web pages. This feature allows for switching between frames on a web page, and enables JAWS to read the alternative text tags attached to graphics, and to announce the number of links in a web page frame. More information about JAWS cursors can be found in the JAWS Quick Reference Guide.