
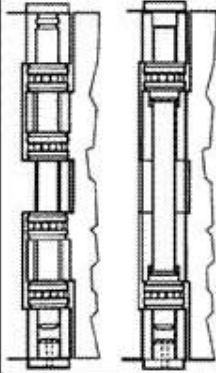


063411 - FBB179 4-1/2"x4" 10 Ball Bearing Hinge




 View larger / more images



Features and Benefits

- ANSI A8112
- Steel – polished and plated or phosphated and prime coated for painting
- For medium weight doors of average frequency
- All hinges have template screw hole location for use on either wood or hollow metal doors and frames
- Equipped with two permanently lubricated non-detachable ball bearings
- Steel hinges are polished and plated to insure a fine durable finish or phosphated and prime coated for painting
- Equipped with easily seated, non-rising pins
- Pins in nonferrous hinges are stainless steel
- Available in wide throw, specifications on request

 --> [Hardware Templates](#)

Product Details

Length	4-1/2",114.3mm
Width	4",101.6mm
Class	FBB179
Finish	10
Finish Description	Satin Bronze
Metal Gauge	.134
Machine Screws Per Piece	8 - 12-24x1/2
Wood Screws Per Piece	8 - 12x1-1/4
Type	MTO

STANLEY FBB179 BUTT HINGE

APPENDIX B

HARDWARE ILLUSTRATION # 002B