

# 2009-2010 POSTGRADUATE EMPLOYMENT REPORT



GRAND VALLEY  
STATE UNIVERSITY

## CAREER SERVICES OFFICE



**206 Student Services**  
**Allendale, MI 49401**  
**616-331-3311**

**116B DeVos Center**  
**Grand Rapids, MI 49504**  
**616-331-6708**

[career@gvsu.edu](mailto:career@gvsu.edu)  
[www.gvsu.edu/careers](http://www.gvsu.edu/careers)

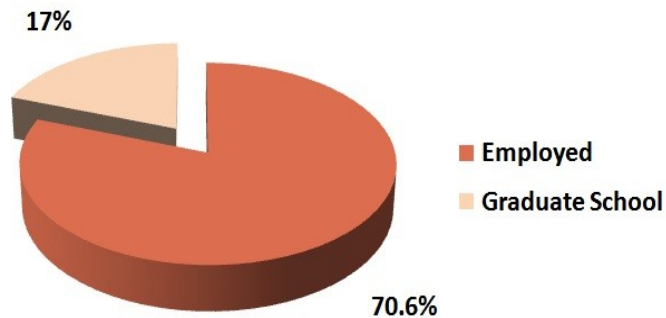
# 2009-2010 Postgraduate Employment Report

This report summarizes postgraduate activities for Grand Valley State University graduates. The information is categorized by college. For more detailed information by academic major, please contact the Career Services office at 616-331-3311 or [career@gvsu.edu](mailto:career@gvsu.edu).

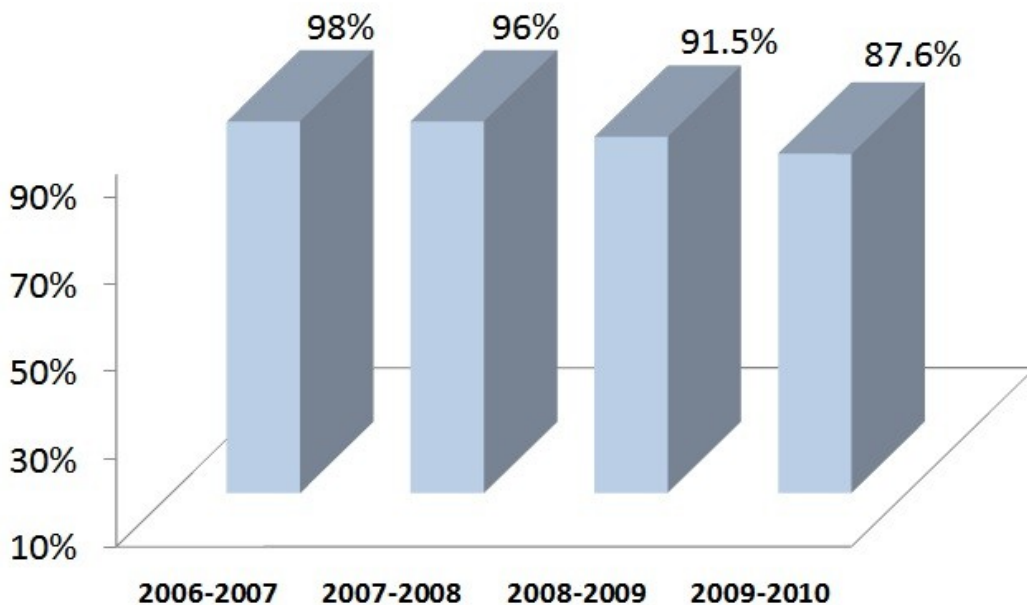
## Summary

In 2009-2010, 70.6 percent of GVSU graduates were employed, 17 percent were enrolled in graduate school. The results for the previous year, 2008-2009, were 72.3 percent employed, and 19.2 percent enrolled in graduate school.

In 2009-2010, 55.48 percent of graduates were employed directly in their fields of study, compared to 56.5 percent in 2008-2009.

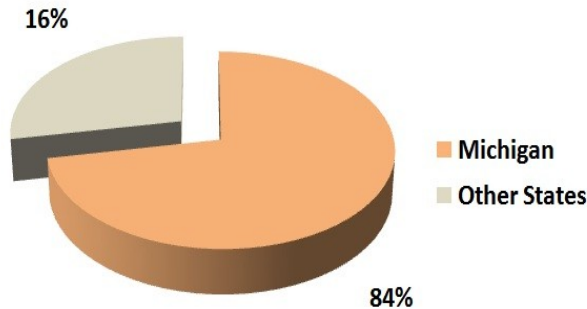


## Trend in Employment / Graduate School Activity

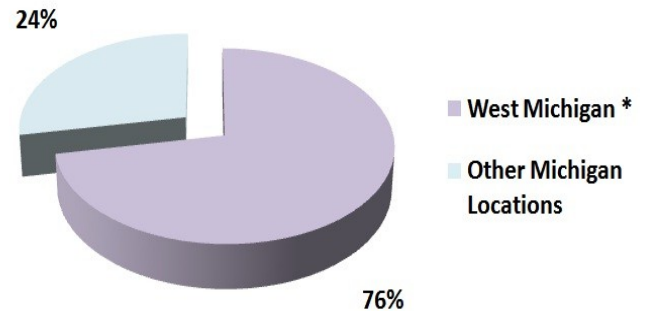


# 2009-2010 Postgraduate Employment Report

## Employment by Geographic Location



**NATIONALLY**



**WITHIN MICHIGAN**

\* INCLUDES ALLEGAN, KENT, MUSKEGON, OTTAWA COUNTIES

## Top Employers Supporting/Hiring Grand Valley Graduates (alphabetical order)

Amway Corporation	Grand Rapids Public Schools	Mill Steel
Auto-Owners Insurance	Haworth	Northwestern Mutual
BDO Seidman	Herman Miller	Perrigo
Bethany Christian Services	Holland Hospital	Priority Health
Chase Bank	Hope Network	Saint Mary's Health System
Child & Family Resource Council	IBM	Spectrum Health
Crowe Howath LLP	JR Automation	Steelcase Corporation
CWD Real Estate Investments	Kent County	US Marshals
Foremost Insurance	Kraft Foods	Van Andel Research Institute
Fredrick Meijer Gardens	Make A Wish Foundation	Wolverine World Wide
Goodwill Industries	Mercantile Bank	YMCA
Gordon Food Service	Metro Health	

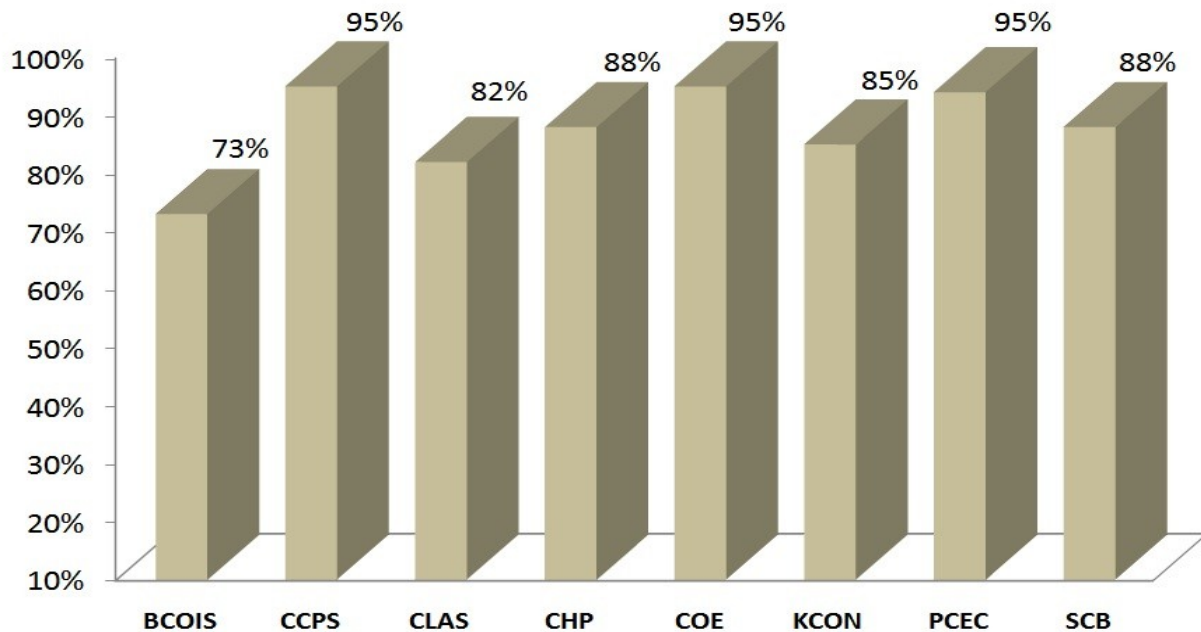
# 2009-2010 Postgraduate Employment Report

## Postgraduate Numbers by College

GVSU College	Employed	Graduate School
Brooks College of Interdisciplinary Studies (BCOIS)	54%	19%
College of Community and Public Service (CCPS)	83%	12%
College of Liberal Arts and Sciences (CLAS)	58%	24%
College of Health Professions (CHP)	66%	22%
College of Education (COE) *	92%	3%
Kirkhof College of Nursing (KCON)	75%	10%
Seymour and Ester Padnos College of Engineering and Computing (PCEC)	86%	9%
Seidman College of Business (SCB)	76%	12%

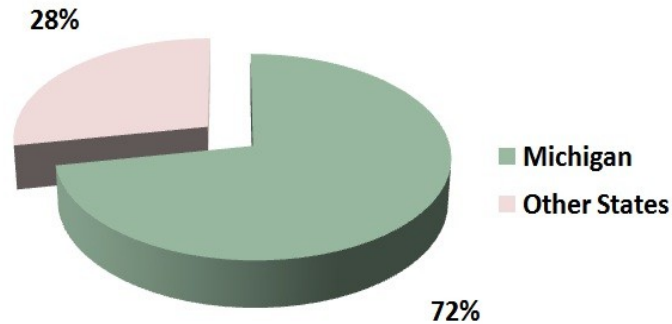
\* College contains graduate programs only. Undergraduate employment statistics for teachers are reported in the college of their major.

## Total Postgraduate Numbers by College (Employed and Graduate School)



# 2009-2010 Postgraduate Employment Report

## Graduate Schools by State

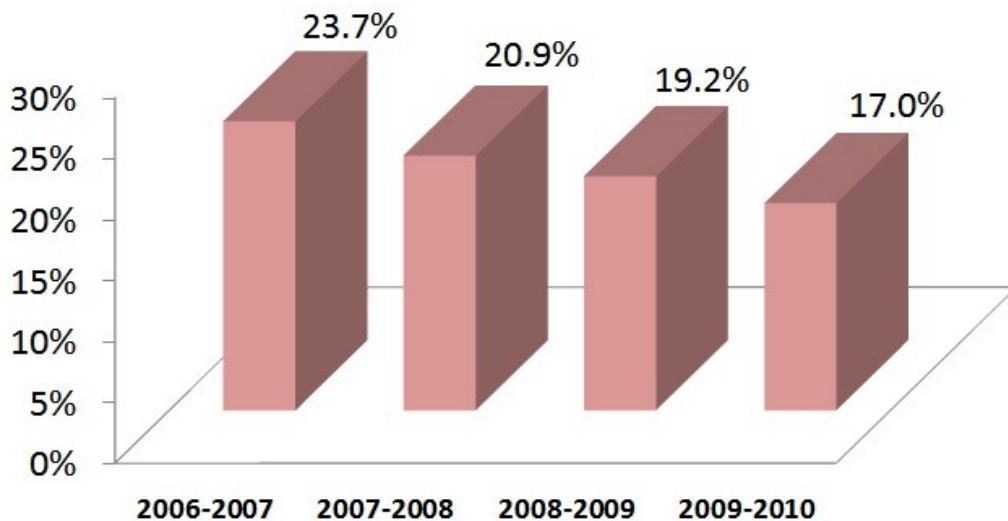


## Graduate Schools Attended

Arizona State University	John Hopkins University	University of Hawaii
Baylor University	Kielce University of Technology	University of Illinois
Bowling Green State University	Lake Erie College	University of Kentucky
Carnegie Institute	Marquette University	University of Louisville
Central Michigan University	National Taiwan Normal University	University of Maryland
Colorado State University	New York Film Academy	University of Michigan
Columbia College Chicago	North Carolina State University	University of Notre Dame
Cooley Law School	Ohio State University	University of Pittsburgh
Cornerstone University	Pittsburgh School of Law	University of South Florida
DePaul University	Purdue University	University of Tennessee
Eastern Michigan University	South Texas College of Law	University of Texas
Elmira College	Southern Illinois University	University of Wisconsin
Fayetteville State University	Stanford University	University of Wyoming
GE Aviation	The Art Institute of Chicago	Vanderbilt University
Georgia State	University of California	Virginia Commonwealth University
Grand Valley State University	University of Central Florida	Wayne State University
Hochschule Fulda University of Applied Sciences	University of Colorado	Western Michigan University
Huazhong University of Science and Technology	University of Connecticut	Wichita State University
Indiana University	University of Edinburgh	Xavier University

# 2009-2010 Postgraduate Employment Report

## Trend in Graduate School Participation



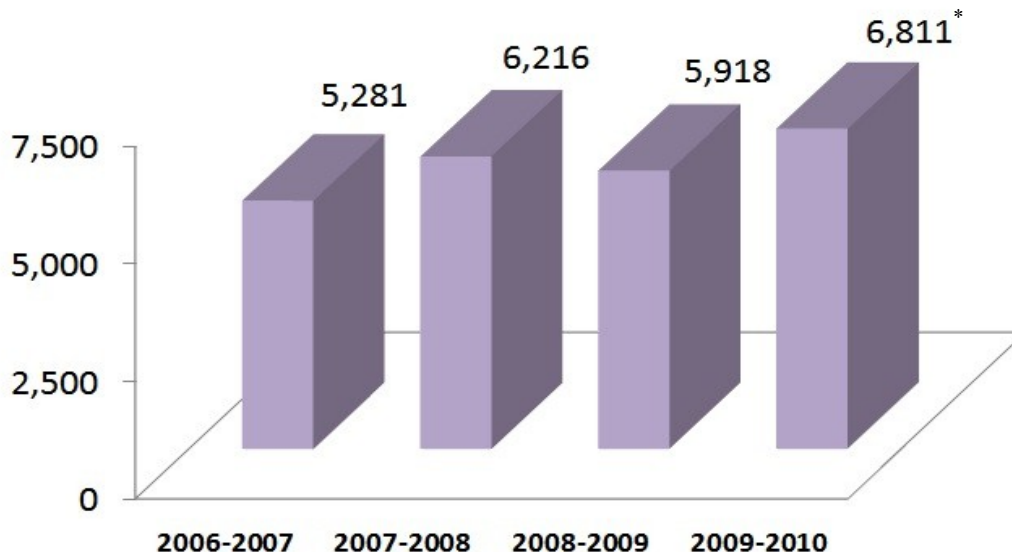
## Survey Response Rate

GVSU College	Graduates	Responses	Response Rate
Brooks College of Interdisciplinary Studies (BCOIS)	61	26	43%
College of Community and Public Service (CCPS)	689	301	44%
College of Liberal Arts and Sciences (CLAS)	2,109	926	44%
College of Health Professions (CHP)	323	158	49%
College of Education (COE)	458	141	31%
Kirkhof College of Nursing (KCON)	257	106	41%
Seymour and Esther Padnos College of Engineering and Computing (PCEC)	177	79	45%
Seidman College of Business (SCB)	835	459	55%
<b>University Total</b>	<b>4,909</b>	<b>2,196</b>	<b>44%*</b>

\* Response rate for 2008-2009 was 40.3%

# 2009-2010 Postgraduate Employment Report

## Student Enrollment in Experiential Education Programs



\* Denotes a 15% increase over 2008-2009 internships.

## Internship Achievements

- Awarded a total of \$8,000 to 25 students through Career Services Internship Awards.
- Awarded \$20,000 in grants to ten academic departments (African/African American Studies, Anthropology, Continuing Education-Holland, Finance, Latin American Studies, Movement Science, Padnos International Center, Political Science, Professional Science Masters, and Writing). Departments utilized these funds to expand on-line resources, enhance experiential learning in the classroom, host internship expos, create new marketing materials, and cultivate relationships with employer contacts in an effort to increase student participation in internships and improve the quality of internship programs.
- Held fourth annual Internship Recognition Luncheon with 100 employers, faculty and staff in attendance. Awarded Outstanding Intern of the Year, Outstanding Internship Supervisor of the Year, and Outstanding Internship Employer of the Year.
- Increased job/internship opportunities available for students/alumni by 12 percent.
- Created new online tracking system for students completing credit-bearing internships.

# 2009-2010 Postgraduate Employment Report

## Career Services

### Overview of Services

Grand Valley Career Services offers a broad range of services to assist students and alumni, including individual job search assistance, networking strategies, cover letter and resume writing, simulated interviews, career fairs, web-based job listings and resume postings, on-campus recruiting, career contact bank, and much more. For more information about our services, please visit our Website at [www.gvsu.edu/careers](http://www.gvsu.edu/careers).

### Annual Activities

Students served in individual and walk-in advising appointments	4,348
Student participation in Career Services-sponsored workshops	4,819
Student and alumni participation in on-campus interviews	1,826
Student and alumni attendance at GVSU-sponsored career events	3,018
Employers attending/recruiting at GVSU-sponsored career events for students and alumni	872
Employer visits to develop opportunities and establish employer relations	1,099
Career Services staff contacts with GVSU faculty	1,742

The mission of the Career Services staff is to empower students and alumni to attain career goals in support of a comprehensive and integrated liberal education.

Please feel free to contact our office if you have any questions regarding our services or this report.

Sincerely,



Troy Farley  
Career Services Director