

2007-2008 POSTGRADUATE EMPLOYMENT REPORT



GRAND VALLEY
STATE UNIVERSITY

CAREER SERVICES OFFICE



**206 Student Services
Allendale, MI 49401
616-331-3311**

**116B DeVos Center
Grand Rapids, MI
616-331-6708**

career@gvsu.edu
www.gvsu.edu/careers

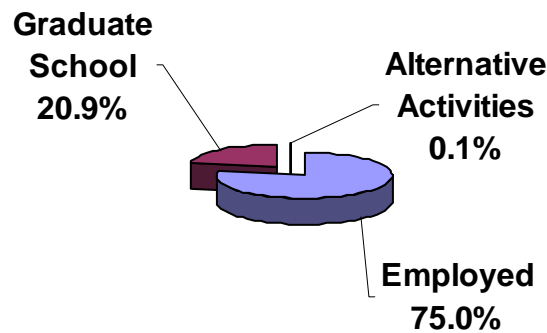
2007-2008 Postgraduate Employment Report

This report summarizes postgraduate activities for Grand Valley State University graduates. The information is categorized by college. For more detailed information by academic major, please contact the Career Services office at 616-331-3311 or career@gvsu.edu.

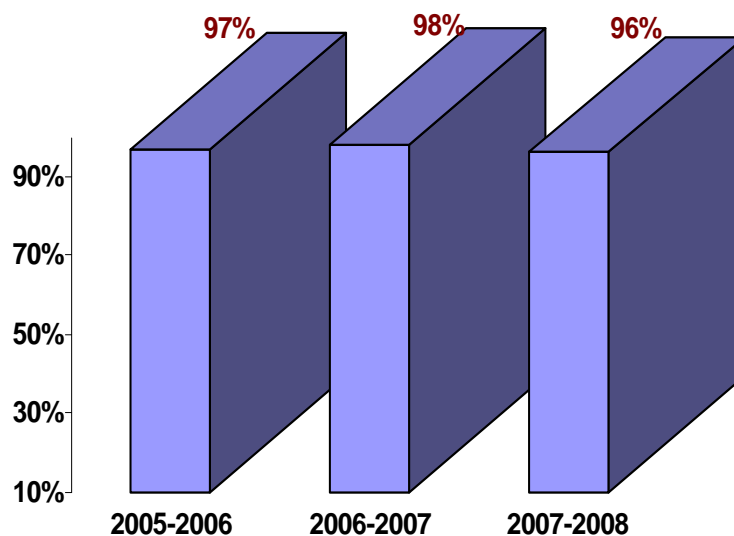
Summary

In 2007-2008, 75.0 percent of GVSU graduates were employed, 20.9 percent were enrolled in graduate school, and 0.1 percent were involved in "alternative activities" such as traveling, homemaking, etc. The results for the previous year, 2006-2007, were 74.2 percent employed, 23.7 percent enrolled in graduate school, and 0.3 percent involved in "alternative activities."

In 2007-2008, 63.5 percent of graduates were employed directly in their fields of study, compared to 62.6 percent in 2006-2007.

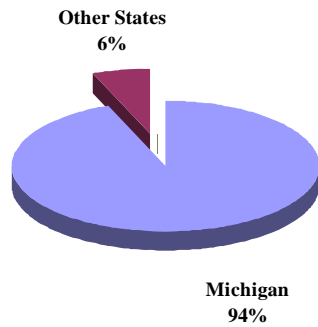


Trend in Employment/Graduate School Activity

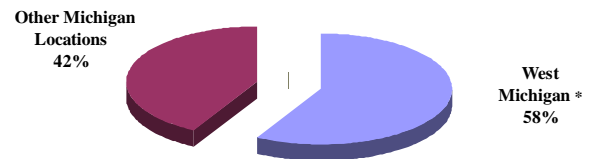


2007-2008 Postgraduate Employment Report

Employment by Geographic Location

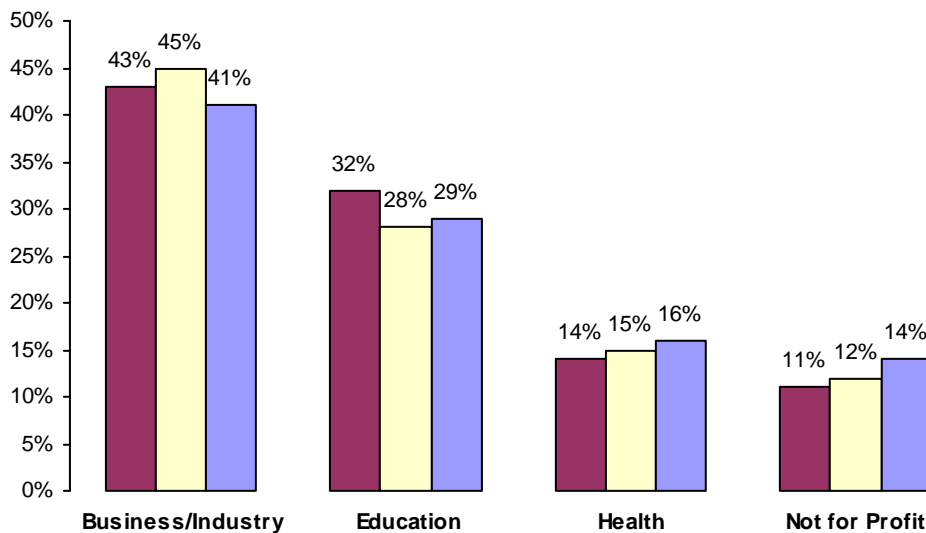


NATIONALLY



WITHIN MICHIGAN
 (*INCLUDES KENT, OTTAWA, ALLEGAN, MUSKEGON COUNTIES)

Employment by Sector



■ 2005-2006 □ 2006-2007 ■ 2007-2008

2007-2008 Postgraduate Employment Report

Activities by College

| | Employed | Graduate School | Alternative Activities |
|---|------------|-----------------|------------------------|
| College of Community & Public Service | 76% | 16% | 0% |
| College of Liberal Arts & Sciences | 59% | 37% | 0% |
| College of Education* | 99% | 1% | 0% |
| College of Health Professions | 91% | 8% | 0% |
| College of Interdisciplinary Studies | 40% | 47% | 0% |
| Kirkhof College of Nursing | 96% | 3% | 0% |
| Padnos College of Engineering & Computing | 87% | 11% | 0% |
| Seidman College of Business | 79% | 14% | 0% |
| Total | 75% | 20.9% | 0.1% |

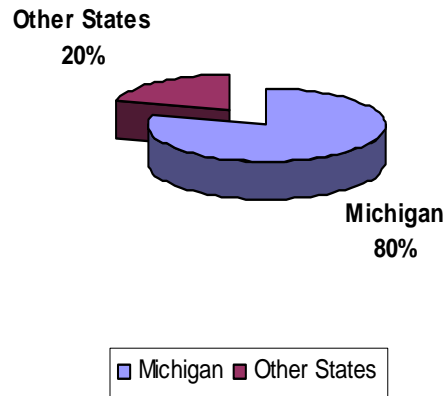
*College contains graduate programs only.

Top Employers Hiring Grand Valley Graduates (Alphabetical Order)

| | | |
|--------------------------------|-------------------------------|------------------------------|
| Americorps | Grand Valley State University | Ottawa County |
| Auto Owners Insurance | Holland Hospital | Perrigo Corporation |
| BDO Seidman | Hudsonville Public Schools | Pine Rest Christian Hospital |
| Bethany Christian Services | Jenison Public Schools | Plante & Moran |
| Bronson Hospital | JP Morgan Chase Bank | Spectrum Health |
| Byron Center Public Schools | JW Marriott Hotels | Saint Mary's Healthcare |
| Calvin College | Kent County | State of Michigan |
| Catholic Charities | Kentwood Public Schools | Steelcase |
| Cedar Springs Public Schools | Kenowa Hills Public Schools | Traverse City Public Schools |
| Deloitte | Mayo Clinic | Wayland Union Public Schools |
| Forest Hills Public Schools | Meijer Corporation | Wells Fargo Financial |
| Gentex Corporation | Metro Health | West Ottawa Public Schools |
| Grand Rapids Community College | National Heritage Academies | Whirlpool Corporation |
| Grand Rapids Public Schools | | |

2007-2008 Postgraduate Employment Report

Graduate School by State

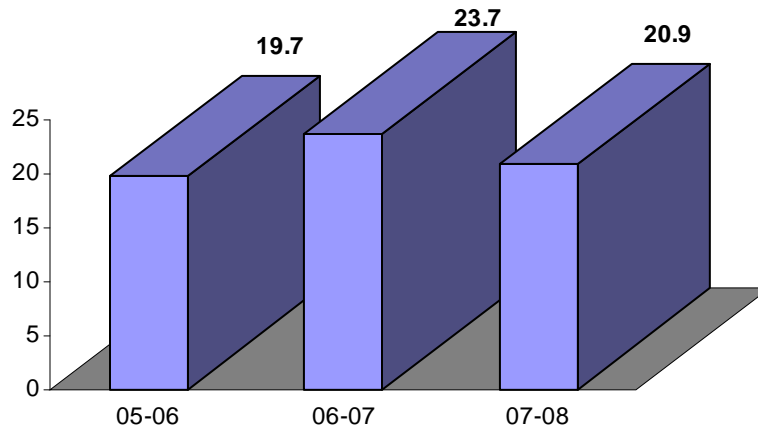


Graduate Schools Attended

| | | |
|--------------------------------|--|----------------------------------|
| Arcadia University | George Washington University | Ohio State University |
| Argosy University | Grand Valley State University | Penn State University |
| Ashford University | Grand Rapids Theological Seminary | Portland Community College |
| Ball State University | Henderson State University | Purdue University |
| Boston University | Howard University | Regis University |
| Central Michigan University | Indiana University | Roosevelt University |
| CG Jung Institute of Chicago | Lake Erie College of Osteopathic Medicine | Saginaw Valley State University |
| Cleveland State University | Loyola University | Southern Illinois University |
| Cooley Law School | Macomb Community College | Texas A & M Corpus Christi |
| Cornell University | Marion College | The Chicago School of Psychology |
| DePaul University | Miami University | Thomas Jefferson University |
| Des Moines University | Miami University of Ohio | University of Arizona |
| Detroit Mercy University | Michigan State University | University of California |
| Eastern Illinois University | Midwestern University | University of Detroit Mercy |
| Eastern Michigan University | National University of Health Sciences | University of Michigan |
| EGNU-Shanghi China | New York University | University of Washington |
| Elmhurst College | Northern Michigan University | Vanderbilt University |
| Ferris State University | Northwestern University | Wayne State University |
| Forest Institute of Psychology | Oakland University | Western Michigan University |

2007-2008 Postgraduate Employment Report

Trend in Graduate School Participation

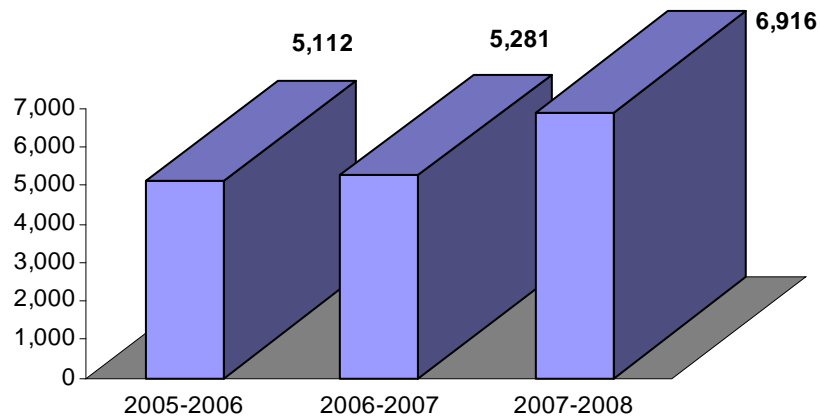


Survey Response Rate

| | Total Graduates | Responses | Response Rate |
|---|-----------------|--------------|---------------|
| University Total | 4,508 | 1,897 | 42.0% |
| College of Community & Public Service | 578 | 235 | 41% |
| College of Liberal Arts & Sciences | 2,134 | 792 | 37% |
| College of Education | 486 | 319 | 66% |
| College of Health Professions | 154 | 66 | 43% |
| College of Interdisciplinary Studies | 44 | 15 | 34% |
| Kirkhof College of Nursing | 245 | 114 | 47% |
| Padnos College of Engineering & Computing | 137 | 61 | 45% |
| Seidman College of Business | 730 | 295 | 40% |

2007-2008 Postgraduate Employment Report

Student Enrollment in Experiential Education Programs



Internship Achievements

- Awarded \$3,800 to ten students with the Career Services Internship Award.
- Awarded \$8,000 in grants to four academic departments (Biology, Geology, Psychology and Writing) Departments utilized these funds to enhance on-line resources, develop employer contacts in and effort to increase student participation in internships and improve the quality of internship programs.
- Held second annual internship recognition luncheon with sixty employers, faculty and staff in attendance. Awarded Outstanding Intern of the Year, and Outstanding Internship Supervisor of the Year.
- Increased visits to employers regarding internship opportunities by 174, a 26% increase.

2007-2008 Postgraduate Employment Report

Career Services

Overview of Services

Grand Valley Career Services offers a broad range of services to assist students and alumni including individual job search assistance, networking strategies, cover letter and resume writing, simulated interviewing, career fairs, web-based job listings/resume postings, on-campus recruiting, career contact bank, and much more. For more information about our services, please visit our website at www.gvsu.edu/careers.

Annual Activities

| | |
|--|--------|
| Students served in individual advising appointments and walk-in advising sessions | 5,127 |
| Students served in classroom presentations and workshop participation | 9,698 |
| Students and alumni contacted via e-mail or direct mailings | 85,216 |
| Students and Alumni participating in on-campus interviews | 1,315 |
| Students/Alumni attending GVSU sponsored career events | 4,084 |
| Employers attending GVSU sponsored career events for students/alumni | 496 |
| Employers participating in on-campus recruiting opportunities | 192 |
| Web-based employment opportunity listings for students and alumni | 8,008 |
| Visits/contacts with employers to develop opportunities and establish employer relations | 1,154 |
| Career Services staff contacts with GVSU faculty | 1,726 |

The mission of the Career Services staff is to empower students and alumni to attain career goals in support of a comprehensive and integrated liberal education.

Please feel free to contact our office if you have any questions regarding our services or this report.

Sincerely,



Troy Farley
Career Services Interim Director