

NICARAGUA

A GVSU FACULTY LED PROGRAM



PSYCHOLOGY IN SAN MARCOS

SPRING 2012
OPEN TO ALL MAJORS

TELL ME ABOUT THIS PROGRAM

Come with us to discover Nicaragua, a beautiful yet impoverished country in the tropics of Central America! You will stay in a college in San Marcos, a lovely, quaint small town in the mountains about an hour from the capital city of Managua. While in Nicaragua, you will have the opportunity to learn about Nicaragua's rich culture and attend cultural events, meet and stay with Nicaraguan families, and explore volcanoes and a beautiful Pacific beach.

The focus of the program is psychology of social inequality, the unequal distribution of power and resources across class, race, and gender. Nicaragua has a long history of struggles related to social injustice and thus provides an ideal vehicle for studying issues of inequality. The program will begin on the GVSU campus, where you will study psychological research and theory related to inequality within a context of the culture and history of Nicaragua. Following these classes, you will depart Grand Rapids for three weeks in Nicaragua. While in Nicaragua, you will visit organizations aimed at preventing or alleviating the effects of social inequality, work on service learning projects, and explore the culture and sites of Nicaragua. In addition to your time spent in San Marcos, we will go on a number of short trips and multi-day excursions to the mountainous region of northwestern Nicaragua and the coastal town of Montelimar.

WHEN CAN I GO?

The tentative program dates are: May 15, 2012-June 1, 2012.

WHERE WILL I LIVE?

For the majority of the time we will stay in dormitories at the Ave Maria University - Latin American Campus in San Marcos and in an orphanage outside of Managua. Our two multi-day excursions we will stay in hotels and in private homes.

WHO IS ELIGIBLE TO PARTICIPATE?

This program is open to all majors. It is recommended that participants have completed at least one high school or college course in Spanish. Students must have a minimum cumulative GPA of 2.5 and a successful application submitted by February 1, 2012.

Padnos International Center

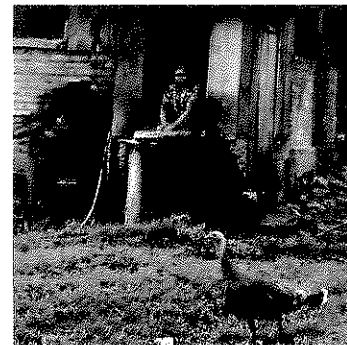
www.gvsu.edu/studyabroad

WHAT CREDITS WILL I RECEIVE ?

Students will register for a total of 3 credits:

PSY 392: Psychology of Social Inequality

Three Credits.



HOW MUCH DOES THIS PROGRAM COST?

The approximate fee for this program is \$2,092*.

Program Fee Includes:

- Round-trip transportation from Grand Rapids
- Accommodations
- All Meals
- Field trips and fees

Additional Costs:

- GVSU Tuition (3 credits—\$1,296)
- Personal expenses (\$200)
- Passport fees (\$140)
- Immunizations and medications (\$100)

Total Projected Cost: \$2,092 (program fee) + \$1,736 (additional costs) = \$3,828*

*Fee subject to adjustments based on actual exchange rates and international airfare.

FINANCIAL AID

All students considering study abroad should have their financial aid reevaluated regardless of whether they are currently receiving federal aid. Additional need-based study abroad grants are also available to eligible students. Early application for financial aid is strongly recommended. **Students must be enrolled for 6 credit hours during the Spring/Summer semesters to be eligible for financial aid.**

GRANTS

GVSU offers grants to be used specifically for faculty-led programs. These grants, which are approximately \$500, are based on financial need only—academic or other criteria are not taken into consideration. All degree-seeking students accepted into a GVSU faculty-led program are automatically considered for the grant if they have a current FAFSA on file in the Financial Aid Office. No application required.

HOW DO I APPLY?

To apply for this program, log on to www.gvsu.edu/studyabroad to begin your online application. Completed applications must be submitted by **February 1, 2012**.

WHO CAN TELL ME MORE?

2012 Director:

Prof. Ellen Shupe

E-mail: shupee@gvsu.edu

Location: 2217 Au Sable Hall

Phone: (616) 331-2905

Department: Psychology

***All program information including courses, duration of program, dates, and other logistics are subject to change. Programs may be cancelled due to extenuating circumstances.**

Padnos International Center

www.gvsu.edu/studyabroad